

PROPER USE GUIDELINES

Cumulative Trauma Disorders can result from the prolonged use of manually powered hand tools. Hand tools are intended for occasional use and low volume applications. A wide selection of powered application equipment for extended-use, production operations is available.

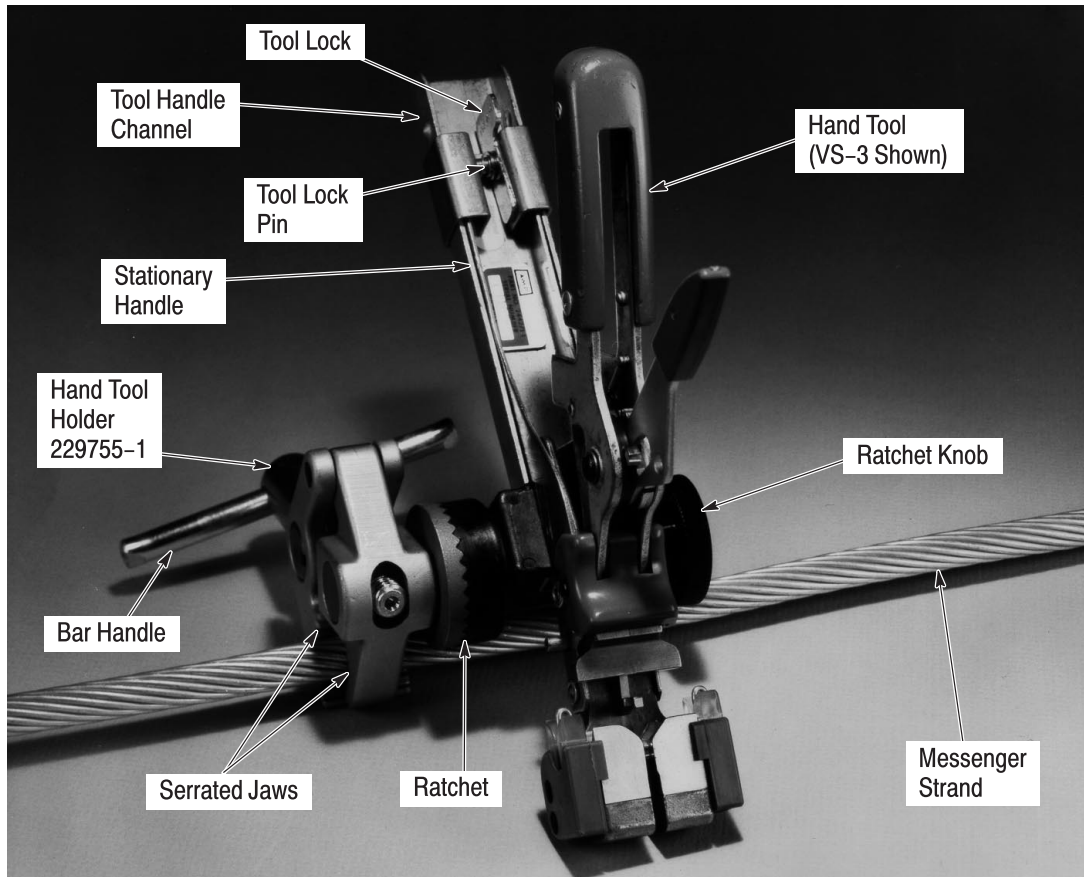


Figure 1

1. INTRODUCTION

This instruction sheet covers the use of Hand Tool Holder 229755-1 shown in Figure 1. The tool is used to support PICABOND (VS-3) and Mini-PICABOND (MVS-3) connector hand tools during field assembly procedures. Read these instructions and those packaged with applicable hand tools thoroughly before proceeding.

NOTE



All dimensions on this document are in metric units [with U.S. customary units in brackets]. Figures and illustrations are for reference only and are not drawn to scale.

Reasons for reissue of this document are provided in Section 8, REVISION SUMMARY.

2. DESCRIPTION

The hand tool holder shown in Figure 1 features a bar handle, serrated jaws, a ratchet, a ratchet knob, a tool

handle channel, and a tool lock. The bar handle is used to open and close the serrated jaws. The ratchet, which permits 360° rotation of the hand tool, is opened and closed by rotation of the ratchet knob. The tool channel accepts the stationary handle of the hand tool, and the tool lock secures the hand tool in the tool holder.

In use, the tool holder is attached to a messenger strand or bracket to support the hand tool. This permits the operator to have both hands free for wire handling purposes.

3. ATTACHING TOOL HOLDER (Figure 1)

The tool holder can be attached to a messenger strand or a bracket. When the tool is used with a bracket, the bracket must be attached to the cable ends with hose clamps or other suitable hardware before starting the following procedure.

1. Rotate the bar handle until the serrated jaws of the tool holder are opened wide enough to accept the messenger strand (or bracket).
2. Place the serrated jaws of the tool holder around the messenger strand (or bracket), and rotate the bar handle until the serrated jaws are secured to the strand or bracket.
3. Loosen the ratchet knob only enough to release and rotate the tool channel to the desired position. Then re-tighten the ratchet knob.
4. Depress and slide the tool lock toward the ratchet until it bottoms. This step clears the tool channel for the positioning of the hand tool handle.

4. INSTALLING HAND TOOL (Figure 1)

1. Start the stationary handle of the hand tool into the tool channel of the tool holder.
2. Slide the tool handle through the tool channel until the tool is at the most desirable position. Check to make sure that one of the holes in the tool channel aligns with the hole in the tool handle.
3. Depress the tool lock and slide it over the tool handle until the tool lock pin aligns with the hole in the tool channel and tool handle. Then release the tool lock.
4. Check to be sure that the tool lock and hand tool are secured.

5. ADJUSTMENTS

The hand tool can be extended or retracted in the tool holder, and/or it can be rotated 360°. Proceed as follows:

1. To extend or retract the hand tool in the tool channel, depress the tool lock and move it and the hand tool to the desired position. Then release the tool lock. Check to be sure all of the components are secured.
2. To rotate the hand tool, loosen the ratchet knob of the tool holder just enough to rotate the hand tool. Rotate the hand tool to the desired position and re-tighten the ratchet knob.

6. HAND TOOL OPERATION (Figure 2)

Procedures for operating the hand tool with or without the tool holder are basically the same.



During assembly, movement of the crimping head should be avoided to prevent wire pull-out before the connector is crimped.

For hand tool operation using the tool holder, refer to Figure 2 and proceed as follows:

1. Position the connector and wires in the hand tool according to instructions packaged with the hand tool. For the VS-3 Hand Tool, refer to Instruction Sheet 408-7280; for the MVS-3 Hand Tool, refer to Instruction Sheet 408-6539.

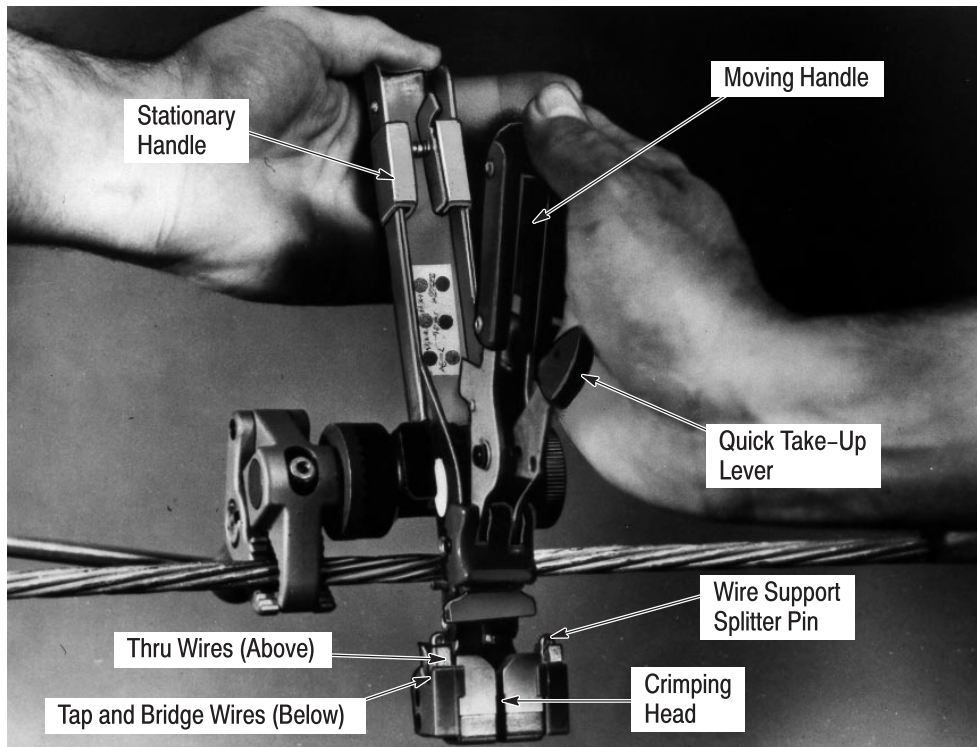


Figure 2

NOTE



When using the VS-3 Hand Tool, the thru wires are placed ABOVE the wire support splitter pins. All other tap and splice wires are placed BELOW the wire support splitter pins. The MVS-3 Hand Tools do NOT have wire support splitter pins.

replaced by Tyco Electronics to ensure quality and reliability. Order replacement parts through your Tyco Electronics Representative, or call 1-800-526-5142, or send a facsimile of your purchase order to 717-986-7605, or write to:

CUSTOMER SERVICE (038-035)
 TYCO ELECTRONICS CORPORATION
 PO BOX 3608
 HARRISBURG PA 17105-3608

2. Support the stationary handle of the tool with one hand. Then depress the quick take-up lever and squeeze the moving handle with the other hand until the moving handle bottoms. Refer to Figure 2.

3. Release the handles of the hand tool and remove the crimped connector.

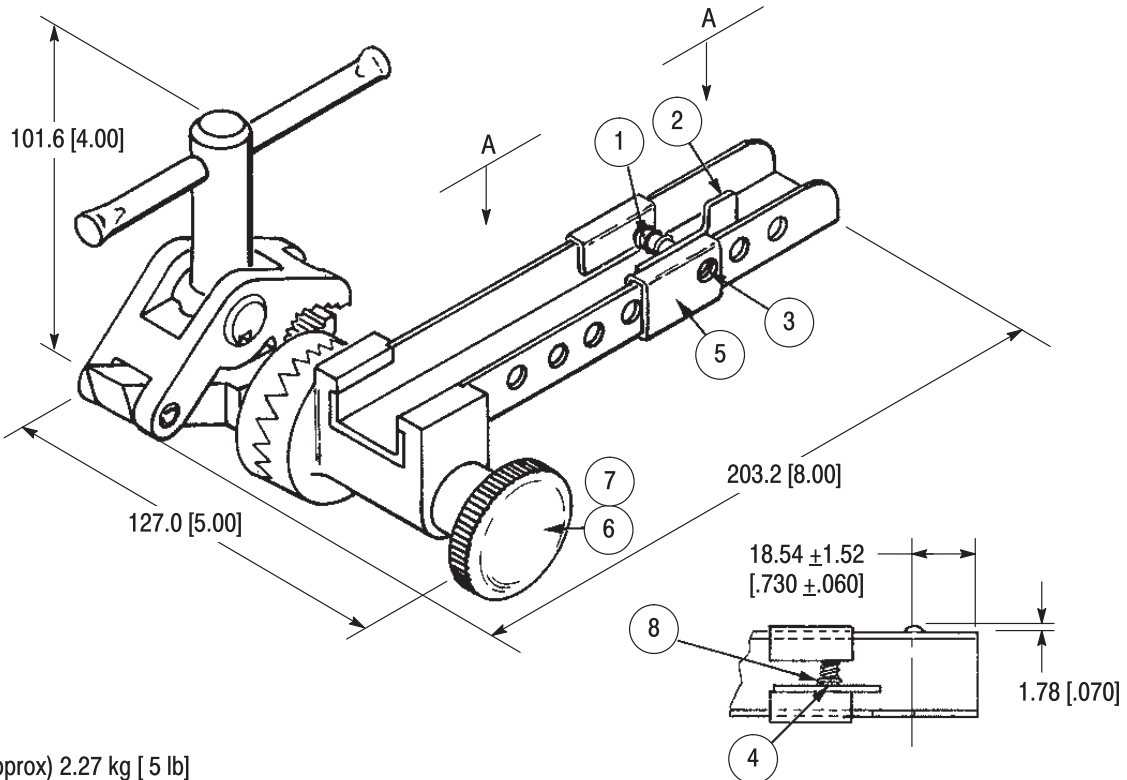
Tools may also be returned to Tyco Electronics for evaluation and repair. For customer repair service, please contact a Tyco Electronics Representative at 1-800-526-5136.

7. REPLACEMENT/REPAIR

Customer-replaceable parts are listed in Figure 3. A complete inventory should be stocked and controlled to prevent lost time when replacement of parts is necessary. Parts other than those listed should be

8. REVISION SUMMARY

- Updated document to corporate requirements
- New format
- Changed title and text in Section 7



Weight: (Approx) 2.27 kg [5 lb]

REPLACEMENT PARTS

ITEM NO.	PART NO.	DESCRIPTION	QTY PER ASSY
1	22280-1	SPRING, Compression, 6.10 Dia x 9.65 L [.240 Dia x .380 L]	1
2	250006-1	TAB, Release	1
3	250005-1	PIN, Locking	1
4	21110-3	RING, Retaining	1
5	250007-1	CLIP, Retaining	1
6	27665-1	KNOB, Knurled	1
7	6-22282-5	SPRING, Compression, 9.14 Dia x 19.05 L [.360 Dia x .750 L]	1
8	230223-1	WASHER	1

Figure 3