

Component name	Base material	Finish
Case	LCP, black, UL94 V-0	Finish
Terminal, wire lug (gold)	Brass	Gold over nickel on over nickel in contact area, Tin over nickel in solder area
Terminal, PC, RA & VRA (gold)	Brass	Silver over nickel
Terminal, PC & wire lug (silver)	Copper; alloy or brass	Gold over nickel
Contact (gold)	Silver clad copper or copper	Silver over nickel
Contact (silver)	Steel	Tin over copper
Frame	Steel	Tin over copper
Spring	Music wire	
Plunger Button	Nylon 6/6, black, red or blue, UL94 HB (extended) or UL94V-2 (flush)	
Support bracket (RA/ES versions only)	Brass	Tin over copper
Support bracket, VRA	Steel	Nickel over copper
Bushing	Brass	Nickel over copper
ES Housing (ES versions)	Nylon 6/6, natural, UL94 V-2	
ES boot (ES versions)	Vinyl plastisol, black	

Specifications	
Rating	Gold: .4VA max. @ 20VDC or peak AC resistive Silver: 1 A @ 125VAC or 28 VDC resistive
Initial termination resistance	20 milliohms max.
Insulation resistance	1,000 Megohms min @ 500 VDC
Dielectric strength	1,000 volts RMS at sea level
Timing	Break before make
Plunger travel	.030
Actuation force	50 to 400 grams
Life expectancy	4 VA, 1 pole: 100,000 1 A, 1 pole: 60,000 1 A, 2 poles: 50,000
Operating temperature	-30° C to +65° C
Storage temperature	-30° C to +65° C
Terminal seal	Single pole: epoxy Double pole: epoxy optional

- NOTES:
- TERMINAL NUMBERS ARE FOR REFERENCE ONLY AND DO NOT APPEAR ON SWITCHES
 - ALL MATERIALS AND FINISHES COMPLY WITH EU DIRECTIVE 2002/95/EC OF 27-JAN-2003 (ROHS).
 - DISPOSABLE BOOT SUPPLIED WITH ES VERSIONS. BOOT TO BE PLACED OVER BUSHING BEFORE SOLDER WASHING
 - CENTER TERMINAL PRESENT ON DOUBLE THROW SWITCHES ONLY.
 - CENTER HOLE REQUIRED ON DOUBLE THROW SWITCHES ONLY.

Model	Actuator	Poles	Rating	Function	Plating	Terminations	Process Seal	Button color	04
TPB	Blank = extended	1	1 = Gold .4VA 3 = Silver 1 Amp 1	C = SPST momentary F = SPDT momentary M = DPST momentary R = DPDT momentary	G = Gold Blank = Silver 1	Blank = Wire lug PC = printed circuit RA = right angle VRA = vertical right angle 3	ES = process sealed 2 0 = Black 2 = Red 6 = Blue		

- NOTES:
1. Silver only available in wire lug and pc terminations
2. RAES available with B and C bushing only
3. VRA only available in single pole

Type PIN	Alco PIN	Flash Activator?	Poles	Throws	Plating	Terminals	Process seal?	Function	Connected Terminals	Dim A	
1-825097-1	TPB1TCGP004	no	1	1	Gold	PC	No	Blank	Off	1-3	.133
1-825097-2	TPB1TCGPC204	no	1	1	Gold	PC	No	Red	Off	1-3	.133
1-825097-3	TPB1TCGPCE504	no	1	1	Gold	PC	Yes	Black	Off	1-3	.133
1-825097-4	TPB1TCGRA004	no	1	1	Gold	Right Angle	No	Black	Off	1-3	.133
1-825097-5	TPB1TCGRA004	no	1	1	Gold	Right Angle	No	Red	Off	1-3	.133
1-825097-6	TPB1TCGRAES004	no	1	1	Gold	Right Angle	Yes	Black	Off	1-3	.133
1-825097-7	TPB1TCGRAES004	no	1	1	Gold	Right Angle	Yes	Red	Off	1-3	.133
1-825097-8	TPB1TCGRA004	no	1	1	Gold	VRA	No	Black	Off	1-3	.133
1-825097-9	TPB1TCGPC004	no	1	2	Gold	PC	No	Black	Off	1-3	.133
1-825097-0	TPB1TFGPCE504	no	1	2	Gold	PC	No	Black	Off	1-3	.133
1-825097-1	TPB1TFGRA004	no	1	2	Gold	Right Angle	No	Black	Off	1-3	.133
1-825097-2	TPB1TFGRA004	no	1	2	Gold	Right Angle	No	Red	Off	1-3	.133
1-825097-3	TPB1TFGRA004	no	1	2	Gold	Right Angle	No	Blue	Off	1-3	.133
1-825097-4	TPB1TFGRAES004	no	1	2	Gold	Right Angle	Yes	Black	Off	1-3	.133
1-825097-5	TPB1TFGRAES004	no	1	2	Gold	Right Angle	Yes	Blue	Off	1-3	.133
1-825097-6	TPB1TFGVR004	no	1	2	Gold	VRA	No	Black	Off	1-3	.133
1-825097-7	TPB21MGP004	no	2	1	Gold	PC	No	Black	Off	1-3, 4, 5	.133
1-825097-8	TPB21MGP004	no	2	1	Gold	Right Angle	No	Red	Off	1-3, 4, 5	.133
1-825097-9	TPB21MGP004	no	2	1	Gold	Right Angle	No	Black	Off	1-3, 4, 5	.133
1-825097-0	TPB21MGP004	no	2	2	Gold	Right Angle	No	Black	Off	1-2, 4, 5	.133
2-1825097-1	TPB1TCGPCE504	yes	1	1	Gold	PC	No	Black	Off	1-3	.000
2-1825097-2	TPB1TCGRA004	yes	1	1	Gold	Right Angle	No	Black	Off	1-3	.000
2-1825097-3	TPB1TCGRAES004	yes	1	1	Gold	Right Angle	Yes	Black	Off	1-3	.000
2-1825097-4	TPB1TFGPCE504	yes	1	2	Gold	PC	No	Black	Off	1-3	.000
2-1825097-5	TPB1TFGRA004	yes	1	2	Gold	Right Angle	No	Black	Off	1-2, 3	.000
2-1825097-6	TPB1TFGRA004	yes	1	2	Gold	Right Angle	No	Red	Off	1-2, 3	.000
2-1825097-7	TPB1TFGRAES004	yes	1	2	Gold	Right Angle	Yes	Black	Off	1-2, 3	.000
2-1825097-8	TPB1TFGRAES004	yes	1	2	Gold	Right Angle	Yes	Red	Off	1-2, 3	.000
2-1825097-9	TPB1TFGVR004	yes	1	2	Gold	VRA	No	Black	Off	1-2, 3	.000
2-1825097-0	TPB21MGP004	yes	1	2	Gold	Right Angle	Yes	Black	Off	1-2, 3	.000

THIS DRAWING IS A CONTROLLED DOCUMENT.

WENNER
M-ZITTO
M-ZITTO
M-ZITTO
M-ZITTO

DATE: 21 AUG 05
BY: ME MZ

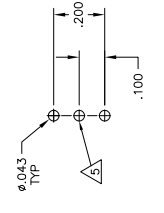
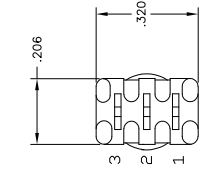
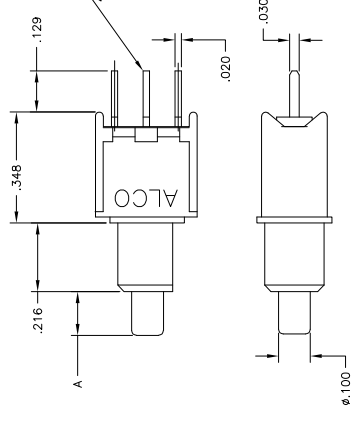
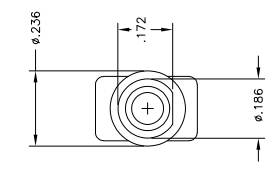
REVISIONS

1 2 3 4 5 6

100798 1825097

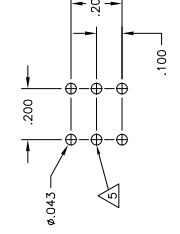
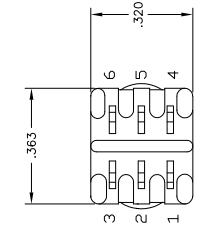
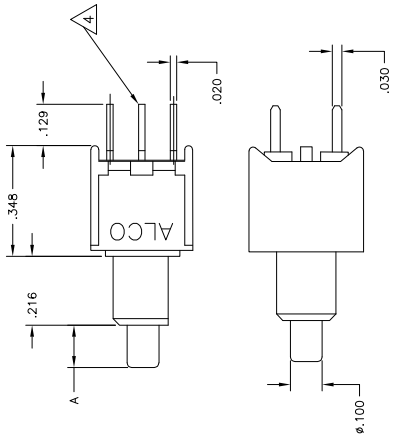
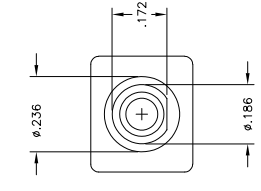
PUSHBUTTON SWITCH, TPB SERIES

Customer Drawing



PCB HOLE LAYOUT

TPB11G6PC & TPB11F6PC



PCB HOLE LAYOUT

TPB21G6PC & TPB21R6PC

THIS DRAWING IS A CONTROLLED DOCUMENT.

DESIGNER	DRAWN	CHECKED	APPROVED
W. ZITTO	W. ZITTO	W. ZITTO	W. ZITTO

ALCO ELECTRONICS CORPORATION
HARRISBURG, PA 17105-3608

PUSHBUTTON SWITCH, TPB SERIES

DATE: 10/07/95

FIG. NO.: 1825097

REV. NO.: 2

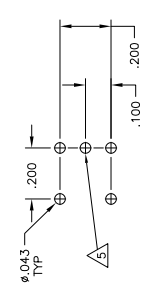
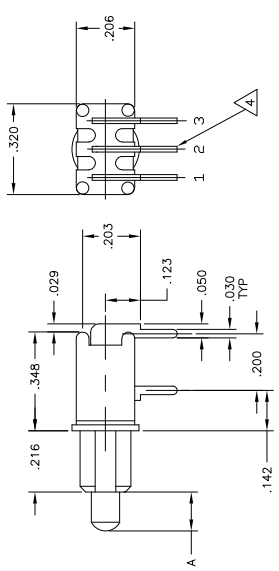
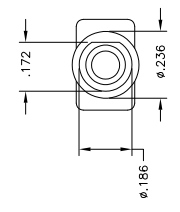
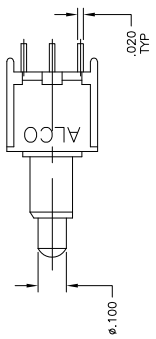
CUSTOMER DRAWING

THIS DRAWING IS UNPUBLISHED.
 © 2008 BY TIPO ELECTRONICS CORPORATION. ALL RIGHTS RESERVED.

RELEASED FOR FABRICATION

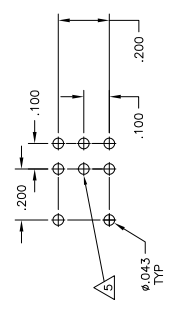
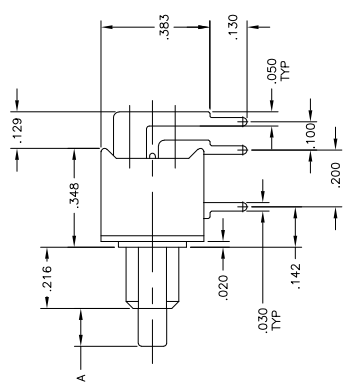
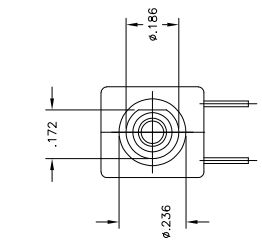
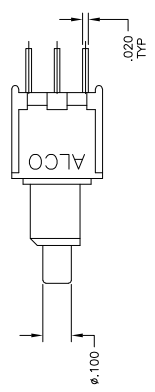
REVISIONS

DATE	BY	CHK	APP
---	---	---	---



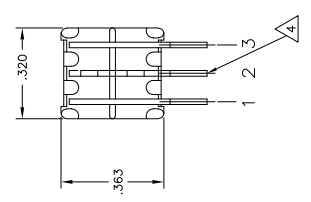
PCB HOLE LAYOUT

TPB11CGRA & TPB11FGRA
 TPBF11CGRA & TPBF11FGRA



PCB HOLE LAYOUT

TPB21MGRA & TPB21RGRA

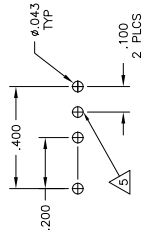
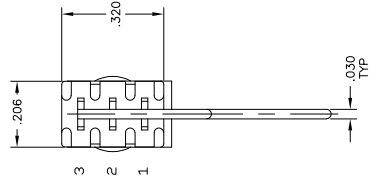
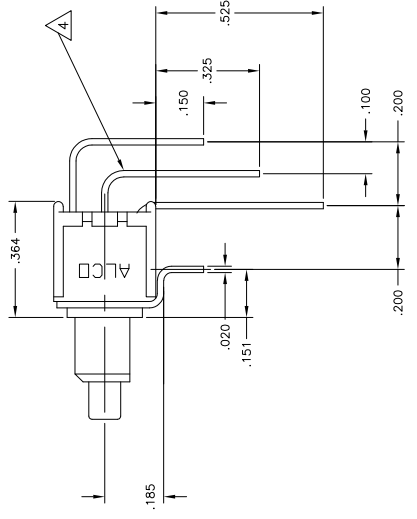
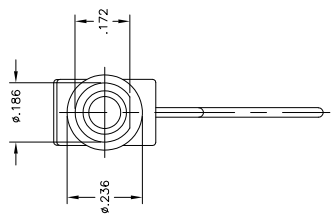
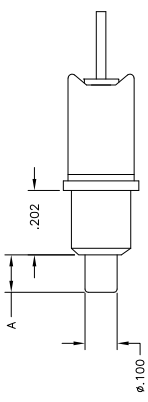


THIS DRAWING IS A CONTROLLED DOCUMENT.		REV	STATUS	DATE
BY: BENNER		1	ISSUED	---
BY: ZITTO		2	REVISED	---
BY: ZITTO		3	REVISED	---
BY: ZITTO		4	REVISED	---
BY: ZITTO		5	REVISED	---
BY: ZITTO		6	REVISED	---
BY: ZITTO		7	REVISED	---
BY: ZITTO		8	REVISED	---
BY: ZITTO		9	REVISED	---
BY: ZITTO		10	REVISED	---
BY: ZITTO		11	REVISED	---
BY: ZITTO		12	REVISED	---
BY: ZITTO		13	REVISED	---
BY: ZITTO		14	REVISED	---
BY: ZITTO		15	REVISED	---
BY: ZITTO		16	REVISED	---
BY: ZITTO		17	REVISED	---
BY: ZITTO		18	REVISED	---
BY: ZITTO		19	REVISED	---
BY: ZITTO		20	REVISED	---
BY: ZITTO		21	REVISED	---
BY: ZITTO		22	REVISED	---
BY: ZITTO		23	REVISED	---
BY: ZITTO		24	REVISED	---
BY: ZITTO		25	REVISED	---
BY: ZITTO		26	REVISED	---
BY: ZITTO		27	REVISED	---
BY: ZITTO		28	REVISED	---
BY: ZITTO		29	REVISED	---
BY: ZITTO		30	REVISED	---
BY: ZITTO		31	REVISED	---
BY: ZITTO		32	REVISED	---
BY: ZITTO		33	REVISED	---
BY: ZITTO		34	REVISED	---
BY: ZITTO		35	REVISED	---
BY: ZITTO		36	REVISED	---
BY: ZITTO		37	REVISED	---
BY: ZITTO		38	REVISED	---
BY: ZITTO		39	REVISED	---
BY: ZITTO		40	REVISED	---
BY: ZITTO		41	REVISED	---
BY: ZITTO		42	REVISED	---
BY: ZITTO		43	REVISED	---
BY: ZITTO		44	REVISED	---
BY: ZITTO		45	REVISED	---
BY: ZITTO		46	REVISED	---
BY: ZITTO		47	REVISED	---
BY: ZITTO		48	REVISED	---
BY: ZITTO		49	REVISED	---
BY: ZITTO		50	REVISED	---
BY: ZITTO		51	REVISED	---
BY: ZITTO		52	REVISED	---
BY: ZITTO		53	REVISED	---
BY: ZITTO		54	REVISED	---
BY: ZITTO		55	REVISED	---
BY: ZITTO		56	REVISED	---
BY: ZITTO		57	REVISED	---
BY: ZITTO		58	REVISED	---
BY: ZITTO		59	REVISED	---
BY: ZITTO		60	REVISED	---
BY: ZITTO		61	REVISED	---
BY: ZITTO		62	REVISED	---
BY: ZITTO		63	REVISED	---
BY: ZITTO		64	REVISED	---
BY: ZITTO		65	REVISED	---
BY: ZITTO		66	REVISED	---
BY: ZITTO		67	REVISED	---
BY: ZITTO		68	REVISED	---
BY: ZITTO		69	REVISED	---
BY: ZITTO		70	REVISED	---
BY: ZITTO		71	REVISED	---
BY: ZITTO		72	REVISED	---
BY: ZITTO		73	REVISED	---
BY: ZITTO		74	REVISED	---
BY: ZITTO		75	REVISED	---
BY: ZITTO		76	REVISED	---
BY: ZITTO		77	REVISED	---
BY: ZITTO		78	REVISED	---
BY: ZITTO		79	REVISED	---
BY: ZITTO		80	REVISED	---
BY: ZITTO		81	REVISED	---
BY: ZITTO		82	REVISED	---
BY: ZITTO		83	REVISED	---
BY: ZITTO		84	REVISED	---
BY: ZITTO		85	REVISED	---
BY: ZITTO		86	REVISED	---
BY: ZITTO		87	REVISED	---
BY: ZITTO		88	REVISED	---
BY: ZITTO		89	REVISED	---
BY: ZITTO		90	REVISED	---
BY: ZITTO		91	REVISED	---
BY: ZITTO		92	REVISED	---
BY: ZITTO		93	REVISED	---
BY: ZITTO		94	REVISED	---
BY: ZITTO		95	REVISED	---
BY: ZITTO		96	REVISED	---
BY: ZITTO		97	REVISED	---
BY: ZITTO		98	REVISED	---
BY: ZITTO		99	REVISED	---
BY: ZITTO		100	REVISED	---

THIS DRAWING IS UNCLASSIFIED
 DATE 05-20-2010 BY 1003 ELECTRONICS CORPORATION, ALL RIGHTS RESERVED.

REVISONS
 1
 SEE SHEET 1

AD
 1
 1

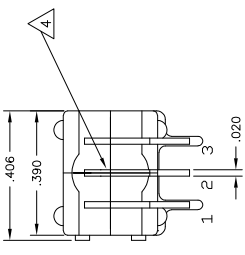
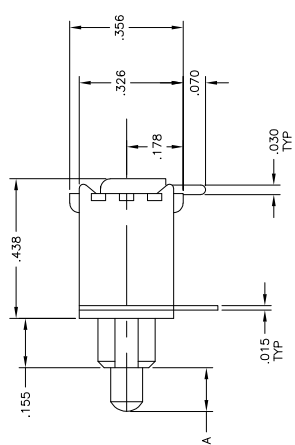
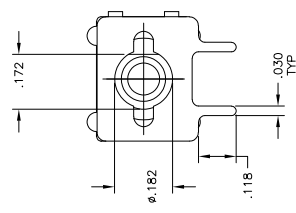
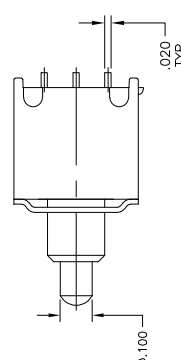
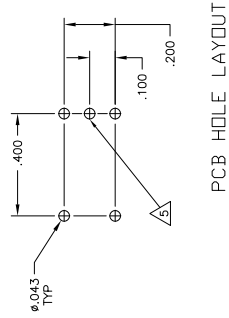


PCB HOLE LAYOUT

TPB11CVRA & TPB11FGVRA

THIS DRAWING IS A CONTROLLED DOCUMENT.		DESIGNER	DATE
DRAWN BY		DATE	DATE
CHECKED BY		DATE	DATE
APPROVED BY		DATE	DATE
PARTIALS SHEETS:		PARTIALS SHEETS:	
PAGE	TOTAL	PAGE	TOTAL
1	1	1	1
NOTES:		NOTES:	
1. SEE DRAWING 1825097 FOR DIMENSIONS.		1. SEE DRAWING 1825097 FOR DIMENSIONS.	
MATERIAL:		MATERIAL:	
STEEL		STEEL	
FINISH:		FINISH:	
NONE		NONE	
REVISIONS:		REVISIONS:	
NO.	DESCRIPTION	DATE	BY
1	SEE SHEET 1		
CUSTOMER DRAWING		CUSTOMER DRAWING	
PART 4.1		PART 4.1	
REV 4.6		REV 4.6	

8	7	6	5	4	3	2	1
THIS DRAWING IS UNCONTROLLED. RELEASED FOR FABRICATION BY TICO ELECTRONICS CORPORATION. ALL RIGHTS RESERVED.		REV. DATE		REV. DATE			
AD		PT		REVISIONS			
-		-		DESCRIPTION			
-		-		SEE SHEET 1			
-		-		DATE			
-		-		DRAWN			
-		-		CHK			
-		-		APP			



TPB11CGRAES & TPB11FGRAES
TPBF11CGRAES & TPBF11FGRAES

THIS DRAWING IS A CONTROLLED DOCUMENT.		DATE		TICO ELECTRONICS CORPORATION	
DRAWN BY: M. ZITTO		STATUS: 11/11/85		HARRISBURG, PA 17105-3608	
CHECKED BY: M. ZITTO		STATUS: 11/11/85		PART NO. 1825097	
APPROVED BY: M. ZITTO		STATUS: 11/11/85		SERIES: TPB SERIES	
PART NO. 1825097		STATUS: 11/11/85		DESCRIPTION: PUSHBUTTON SWITCH, TPB SERIES	
MATERIAL: -		FINISH: -		SPEC. PAGE CODE: -	
QUANTITY: -		REVISION: -		DRAWN BY: M. ZITTO	
DATE: 11/11/85		DRAWN BY: M. ZITTO		CHECKED BY: M. ZITTO	
APPROVED BY: M. ZITTO		STATUS: 11/11/85		PART NO. 1825097	
CUSTOMER DRAWING		PAGE: 4.1		OF: 6	