

MATERIALS

COMPONENT NAME	BASE MATERIAL	FINISH
CASE	LCP, BLACK, UL94 V-0	
TERMINAL, WIRE LUG (GOLD)	BRASS	GOLD OVER NICKEL
TERMINAL, PC & RA (GOLD)	BRASS	GOLD OVER NICKEL IN CONTACT AREA, TIN OVER NICKEL IN SOLDER AREA
TERMINAL, WIRE LUG & PC (SILVER)	SILVER CLAD COPPER	SILVER OVER NICKEL
CONTACT (GOLD)	COPPER ALLOY OR BRASS	GOLD OVER NICKEL
CONTACT (SILVER)	SILVER CLAD COPPER OR COPPER	SILVER OVER NICKEL
FRAME	STEEL	TIN OVER COPPER
SPRING	MUSIC WIRE	
PLUNGER BUTTON	NYLON 6/6, BLACK, RED OR BLUE, UL94 HB	
GUIDE, CC & FF SWITCHES ONLY	NYLON 6/6, WHITE	

SPECIFICATIONS

RATING	GOLD: .4VA MAX. @ 20VDC OR PEAK AC RESISTIVE SILVER: 1A @ 125VAC OR 28 VDC RESISTIVE
INITIAL TERMINATION RESISTANCE	20 MILLIOHMS MAX.
INSULATION RESISTANCE	1,000 MEGOHMS MIN @ 500 VDC
DIELECTRIC STRENGTH	1,000 VOLTS RMS AT SEA LEVEL
TIMING	BREAK BEFORE MAKE
PLUNGER TRAVEL	.030
ACTIONATION FORCE	50 TO 400 GRAMS
LIFE EXPECTANCY	.4VA: 100,000 1A: 60,000
OPERATING TEMPERATURE	-30°C TO +95°C
STORAGE TEMPERATURE	-30°C TO +95°C
TERMINAL SEAL	SINGLE POLE: EPOXY DOUBLE POLE: EPOXY OPTIONAL

NOTES:

1. TERMINAL NUMBERS ARE FOR REFERENCE ONLY AND DO NOT APPEAR ON SWITCHES
2. ALL MATERIALS AND FINISHES COMPLY WITH EU DIRECTIVE 2002/95/ES OF 27JAN2003 (ROHS)
3. CENTER TERMINAL PRESENT ON DOUBLE THROW SWITCHES ONLY.

PART NUMBER MATRIX

MODEL	POLES	RATING	FUNCTION	PLATING	TERMINATIONS	BUTTON COLOR
TP	1	1=GOLD .4VA	C=SPST MOMENTARY	G=GOLD	BLANK=WIRE LUG	0=BLACK
	2(1+1)	3=SILVER 1 AMP	F=SPDT MOMENTARY	BLANK=SILVER	PC=PRINTED CIRCUIT	2=RED
					RA=RIGHT ANGLE	6=BLUE

NOTES:  
 1. SILVER ONLY AVAILABLE IN WIRE LUG AND PC TERMINATIONS

TYCO P/N	ALCO P/N	POLES	THROWS	PLATING	TERMINALS	BUTTON COLOR	FUNCTION		
							ALCO	ALCO	ALCO
1825095-1	TP11CGPC004	1	1	GOLD	PC	BLACK	OFF	MOM	OFF
1825095-2	TP11CGPC204	1	1	GOLD	PC	RED	OFF	MOM	OFF
1825095-3	TP11CGRA004	1	1	GOLD	RIGHT ANGLE	BLACK	OFF	MOM	OFF
1825095-4	TP11CGRA204	1	1	GOLD	RIGHT ANGLE	RED	OFF	MOM	OFF
1825095-5	TP11CGRA604	1	1	GOLD	RIGHT ANGLE	BLUE	OFF	MOM	OFF
1825095-6	TP11FGPC004	1	2	GOLD	PC	BLACK	ON	MOM	1-2
1825095-7	TP11FGPC204	1	2	GOLD	PC	RED	ON	MOM	1-2
1825095-8	TP11FGRA004	1	2	GOLD	RIGHT ANGLE	BLACK	ON	MOM	1-2
1825095-9	TP11FGRA204	1	2	GOLD	RIGHT ANGLE	RED	ON	MOM	1-2
1-1825095-0	TP11FGRA604	1	2	GOLD	RIGHT ANGLE	BLUE	ON	MOM	1-2
1-1825095-1	TP21CCGRA004	2(1+1)	1	GOLD	RIGHT ANGLE	BLACK	OFF	MOM	OFF
1-1825095-2	TP21CCGRA204	2(1+1)	1	GOLD	RIGHT ANGLE	RED	OFF	MOM	OFF
1-1825095-3	TP21FFGRA004	2(1+1)	2	GOLD	RIGHT ANGLE	BLACK	ON	MOM	1-2

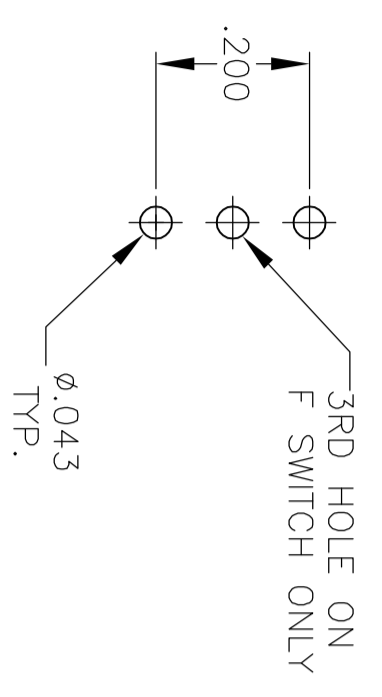
THIS DRAWING IS A CONTROLLED DOCUMENT.  
 DIMENSIONS: INCHES  
 TOLERANCES UNLESS OTHERWISE SPECIFIED:  
 0 PLC ± .010  
 1 PLC ± .010  
 2 PLC ± .010  
 3 PLC ± .010  
 4 PLC ± .010  
 ANGLES ± .3°  
 FINISH -

TYCO ELECTRONICS CORPORATION  
 Harrisburg, Pa 17105-3608

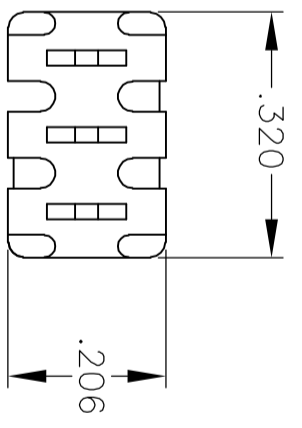
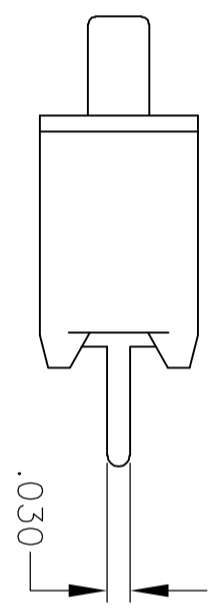
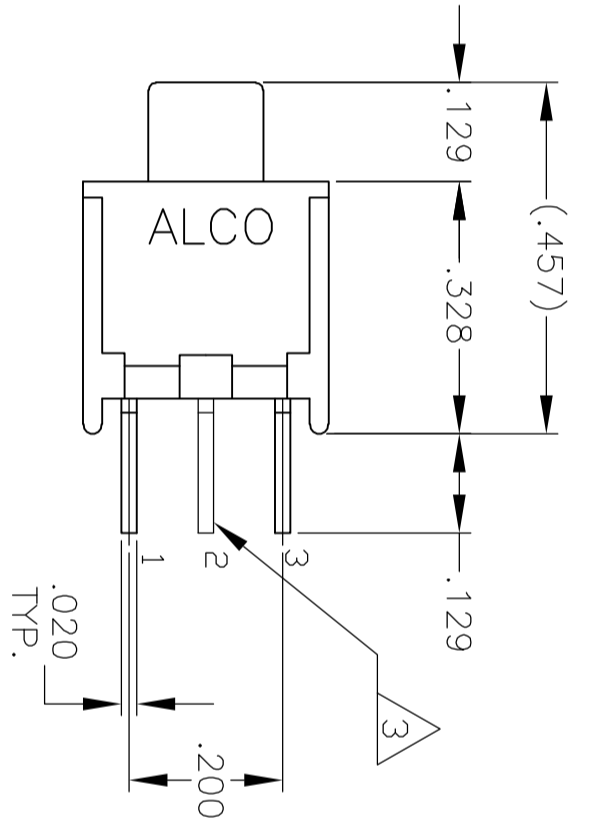
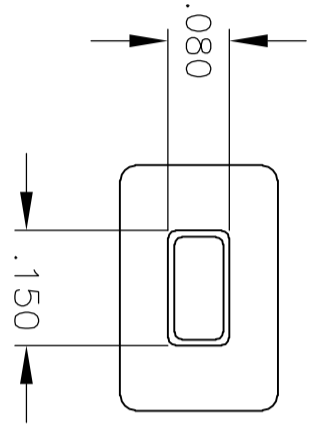
PUSHBUTTON SWITCH, TP SERIES

SIZE: A2  
 CASE CODE: 00779  
 DRAWING NO: C-1825095

SCALE: 4:1 SHEET: 1 OF 3 REV: A



RECOMMENDED HOLE LAYOUT  
 TOLERANCE ±.002 UNLESS  
 OTHERWISE NOTED

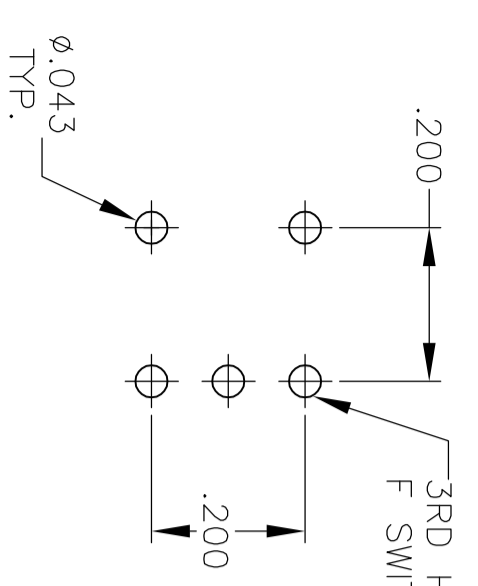


TP11CGPC  
 TP11FGPC

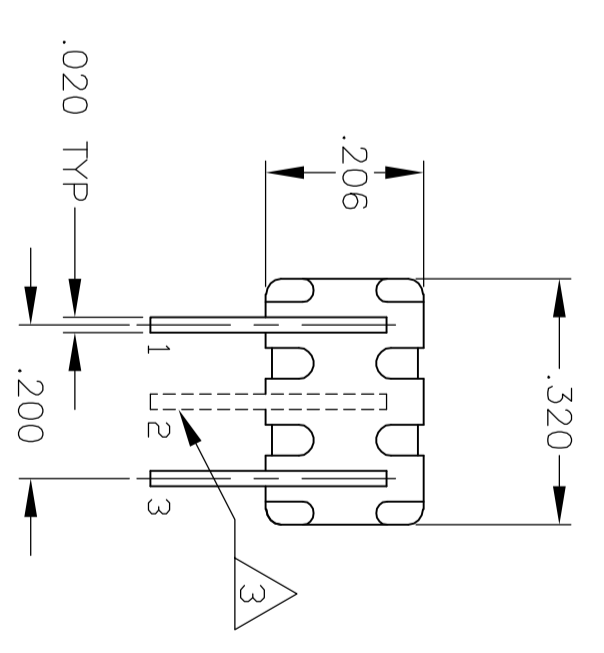
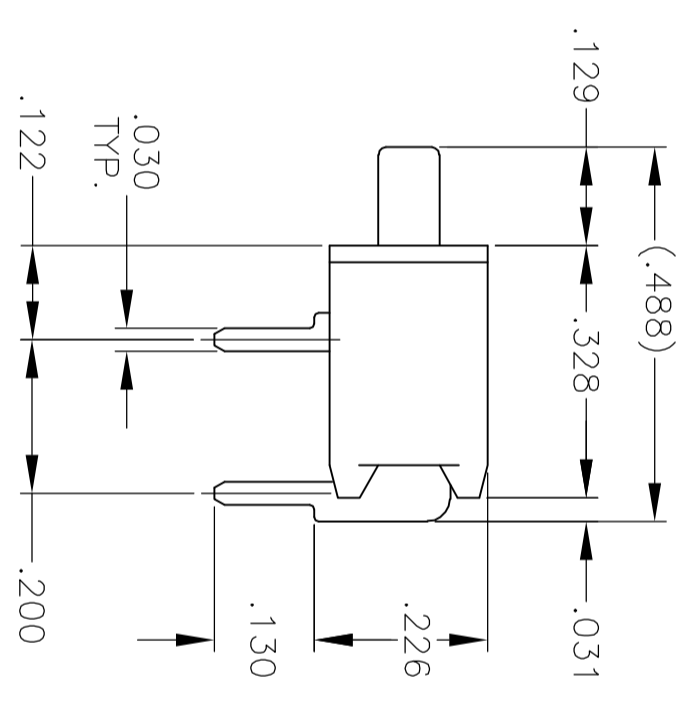
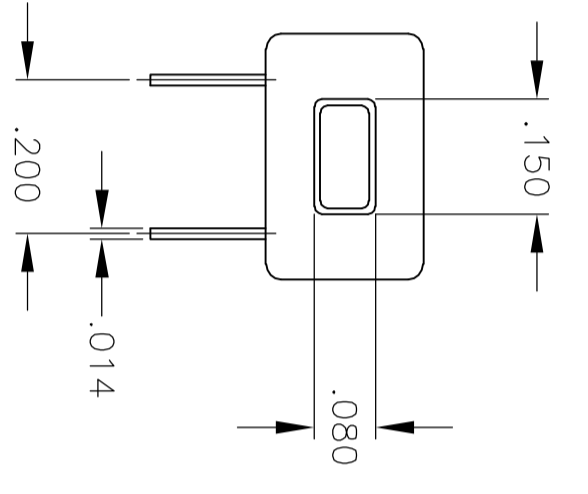
THIS DRAWING IS A CONTROLLED DOCUMENT.		DWN	12-1-05	Tyco Electronics Corporation Harrisburg, Pa 17105-3608	
DIMENSIONS: INCHES		CHK	RAGHU	NAME	
TOLERANCES UNLESS OTHERWISE SPECIFIED:		APVD		Tyco Electronics Corporation	
0 PLG	±	PRODUCT SPEC		PUSHBUTTON SWITCH, TP SERIES	
1 PLG	±	APPLICATION SPEC		SIZE	A2
2 PLG	±	WEIGHT		CAGE CODE	00779
3 PLG	± .010	CUSTOMER DRAWING		DRAWING NO	1825095
4 PLG	±			SCALE	4:1
ANGLES	± .3			SHEET	2 OF 3
FINISH				REV	A

REV	DATE	BY	APP'D
1			

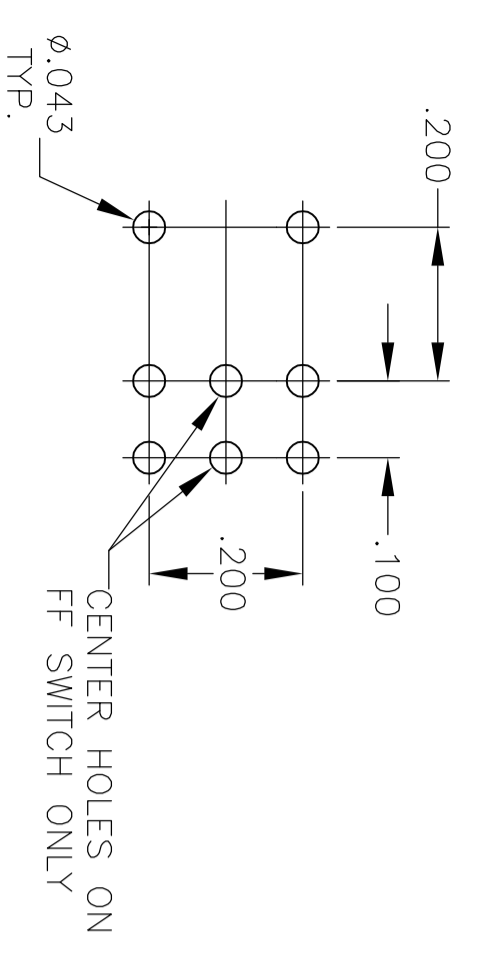
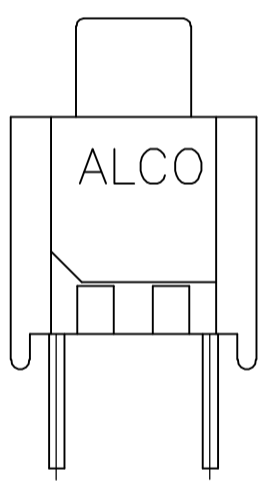
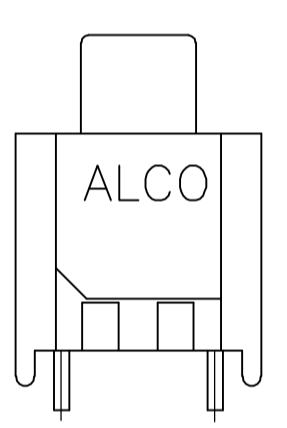
3RD HOLE ON  
FF SWITCH ONLY



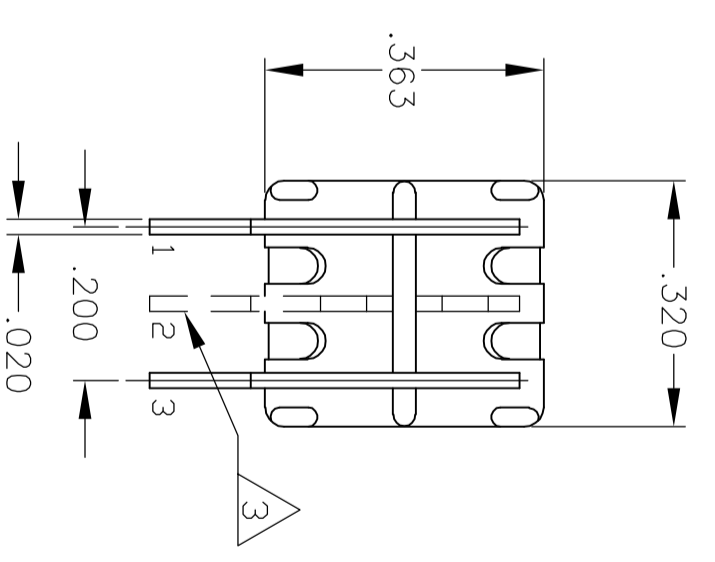
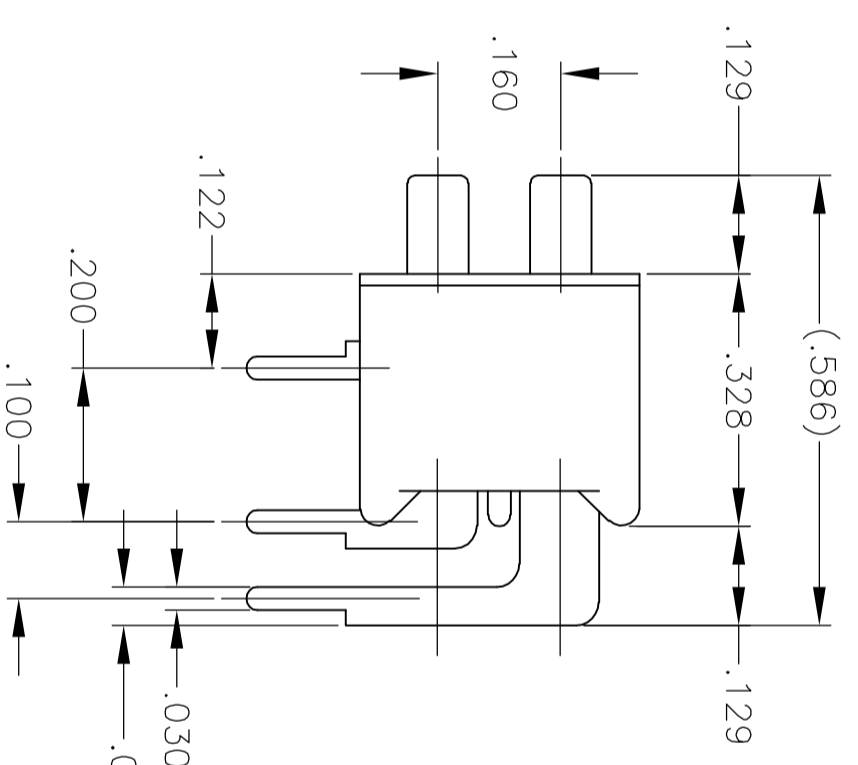
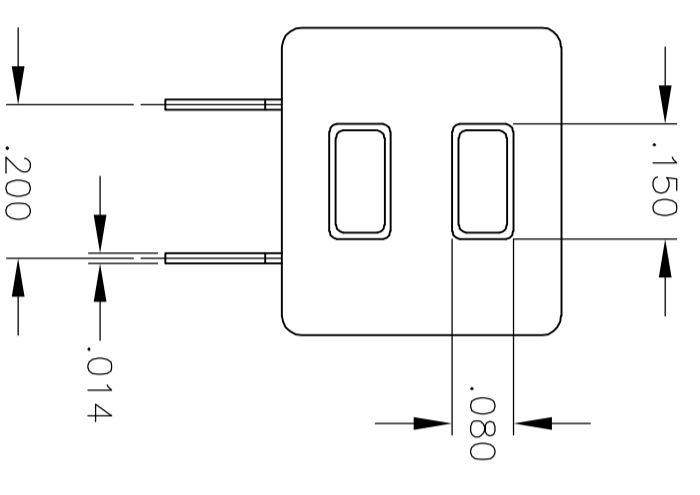
RECOMMENDED HOLE LAYOUT  
 TOLERANCE  $\pm .002$  UNLESS  
 OTHERWISE NOTED



TP11CGRA  
 TP11FGRA



RECOMMENDED HOLE LAYOUT  
 TOLERANCE  $\pm .002$  UNLESS  
 OTHERWISE NOTED



TP21CCGRA  
 TP21FFGRA

1825095

THIS DRAWING IS A CONTROLLED DOCUMENT.		DMW	12-1-05
DIMENSIONS: INCHES		CHK	RAGHU
TOLERANCES UNLESS OTHERWISE SPECIFIED:		APVD	
0 PLG	$\pm$	PRODUCT SPEC	
1 PLG	$\pm$	APPLICATION SPEC	
2 PLG	$\pm .010$	WEIGHT	
3 PLG	$\pm$	CUSTOMER DRAWING	
4 PLG	$\pm .3$		
MATERIAL		SIZE	A2
		CAGE CODE	00779
		DRAWING NO	1825095
		SCALE	1:1
		SHEET	3 OF 3
		REV	A

**tyco**  
**Electronics**  
 Tyco Electronics Corporation  
 Harrisburg, Pa 17105-3608

PUSHBUTTON SWITCH, TP SERIES