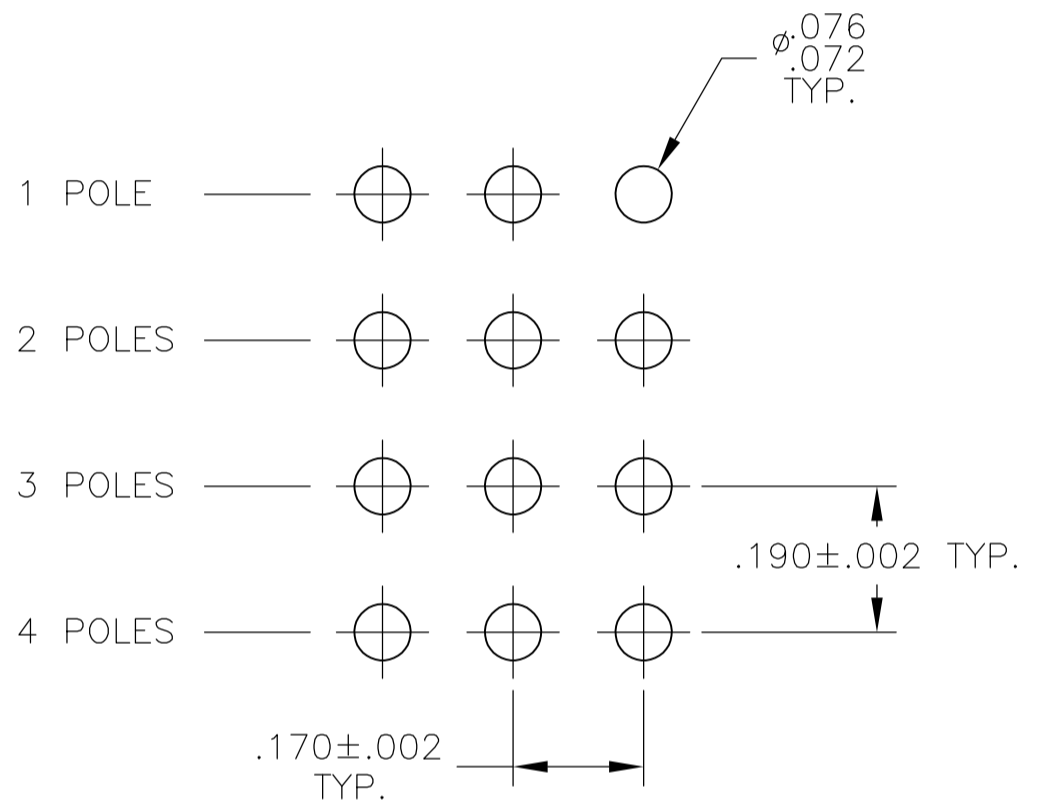
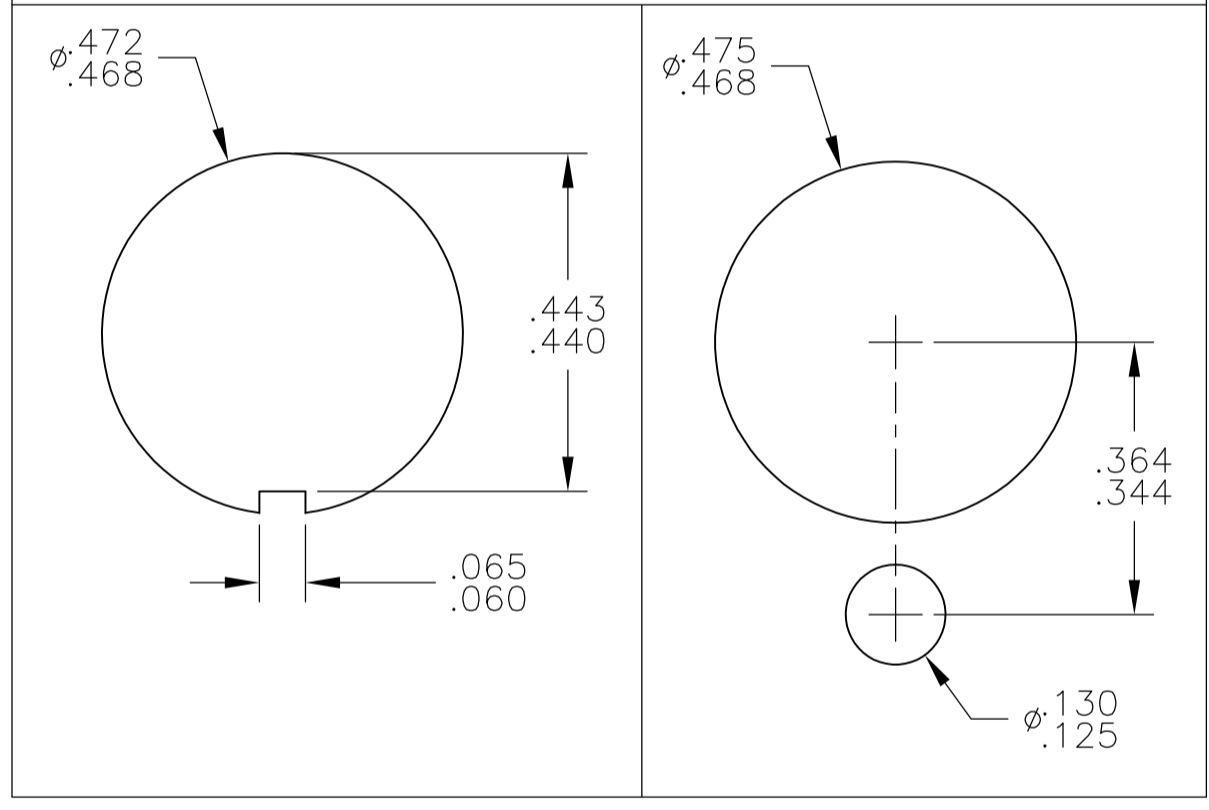


MATERIALS			
NO	COMPONENT NAME	BASE MATERIAL	FINISH
1	HOUSING	ALKYD, GREEN, UL94 V-0	
2	END TERMINAL	SILVER CLAD COPPER ALLOY	5 MICROINCHES MIN GOLD
3	CENTER TERMINAL	COPPER ALLOY	5 MICROINCHES MIN GOLD
4	ROCKER CONTACT	SILVER CLAD COPPER ALLOY	5 MICROINCHES MIN GOLD
5	ACTUATOR TIP	PHENOL RESIN, UL94 HB	
6	ACTUATOR SPRING	MUSIC WIRE	
7	ACTUATOR	PHENOL RESIN, UL94 HB	
8	ACTUATOR GUIDE	POLYMER	
9	FRAME	STAINLESS STEEL PER 100-77	
10	RETAINER	POLYMER	NONE
11	PLUNGER SPRING	MUSIC WIRE	
12	PLUNGER PIN		
13	BUSHING	ZINC	100 MICROINCHES MIN NICKEL ELECTRODEPOSITED OVER 200 MICROINCHES MIN COPPER
14	PLUNGER	BRASS	120 MICROINCHES MIN BRIGHT NICKEL, ELECTRODEPOSITED
15	MOUNTING NUTS (2)	BRASS	120 MICROINCHES MIN BRIGHT NICKEL, ELECTRODEPOSITED
16	LOCATING RING	COLD ROLLED STEEL	120 MICROINCHES MIN BRIGHT NICKEL, ELECTRODEPOSITED
17	INTERNAL TOOTH LOCKWASHER	STEEL	120 MICROINCHES MIN BRIGHT NICKEL, ELECTRODEPOSITED
18	CAP	POLYAMIDE, BLACK, UL94-V-0	

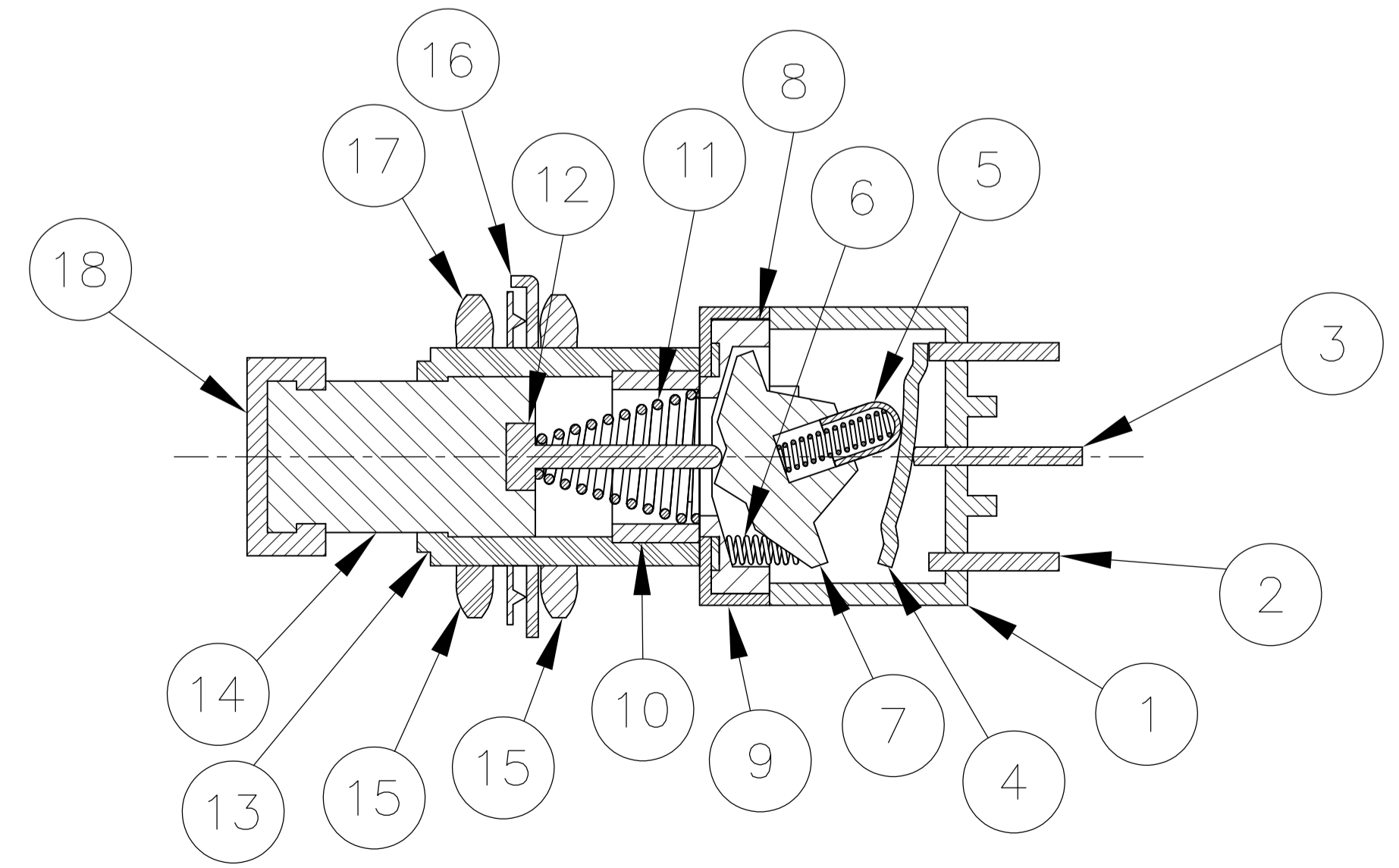
- NOTES:
- TERMINAL NUMBERS ARE FOR REFERENCE ONLY AND DO NOT APPEAR ON THE SWITCHES.
 - EACH SWITCH SUPPLIED WITH THE FOLLOWING MOUNTING HARDWARE:
 (2) 1/4-40 UNS-2B HEX NUTS
 (1) INTERNAL TOOTH LOCKWASHER
 (1) LOCATING RING
 - SWITCHES TESTED TO AND MEET THE REQUIREMENTS OF UL 61058-1A, SWITCHES FOR APPLIANCES SWITCHES WILL ALSO BE TESTED TO AND MEET THE REQUIREMENTS OF TYCO 102-2469, REV O, MINIATURE SWITCH QUALIFICATION REQUIREMENTS.
 - SWITCHES ARE PENDING UL RECOGNITION TO US AND CANADIAN STANDARDS.
 - WIRE LUG CONTACTS WILL ACCEPT 2 #20 AWG SOLID OR STRANDED WIRES.
 - SWITCHES ARE MARKED PER TYCO SPEC 202-37 WITH ALCO BENEATH TYCO AS SHOWN.
 - ALL MATERIALS AND FINISHES SHALL COMPLY WITH EU DIRECTIVE 2002/95/EC OF 27JAN2003 (ROHS).
 - SWITCHES INCLUDE BLACK PUSHBUTTON CAP (P/N 1825070-1).

SPECIFICATIONS - SEE NOTE 3			
CURRENT RATING UL & CSA	6A @ 125 VAC (RESISTIVE)		
	3A @ 250 VAC (RESISTIVE)		
	4A @ 28 VDC (RESISTIVE)		
TERMINATION RESISTANCE	20 MILLIOHMS MAX @ 2-4 VDC, 1A		
INSULATION RESISTANCE	1,000 MEGOHMS MIN.		
WITHSTANDING VOLTAGE	1,000 VAC		
TRAVEL	.140		
ACTUATION FORCE	.4 TO 2 KGF		
OPERATING TEMPERATURE	-20C TO +85C		
STORAGE TEMPERATURE	-40C TO +85C		
CONTACT TIMING	BREAK BEFORE MAKE		
TERMINAL SEAL	EPOXY		
DURABILITY	PARAMETER	PUSH ON/ PUSH OFF	MOMENTARY
	250 VAC (3A RESISTIVE)	30,000	20,000
	125 VAC (6A RESISTIVE)	30,000	20,000
	28 VDC (4A RESISTIVE)	30,000	20,000

RECOMMENDED HOLE LAYOUT TO PREVENT ROTATION



PC BOARD LAYOUT
PC TERMINALS ONLY

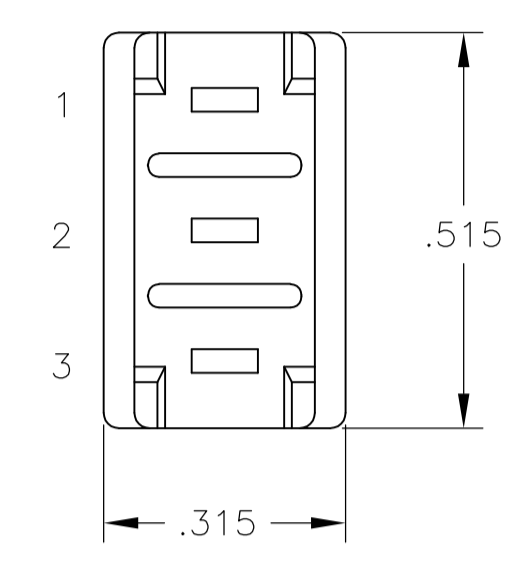
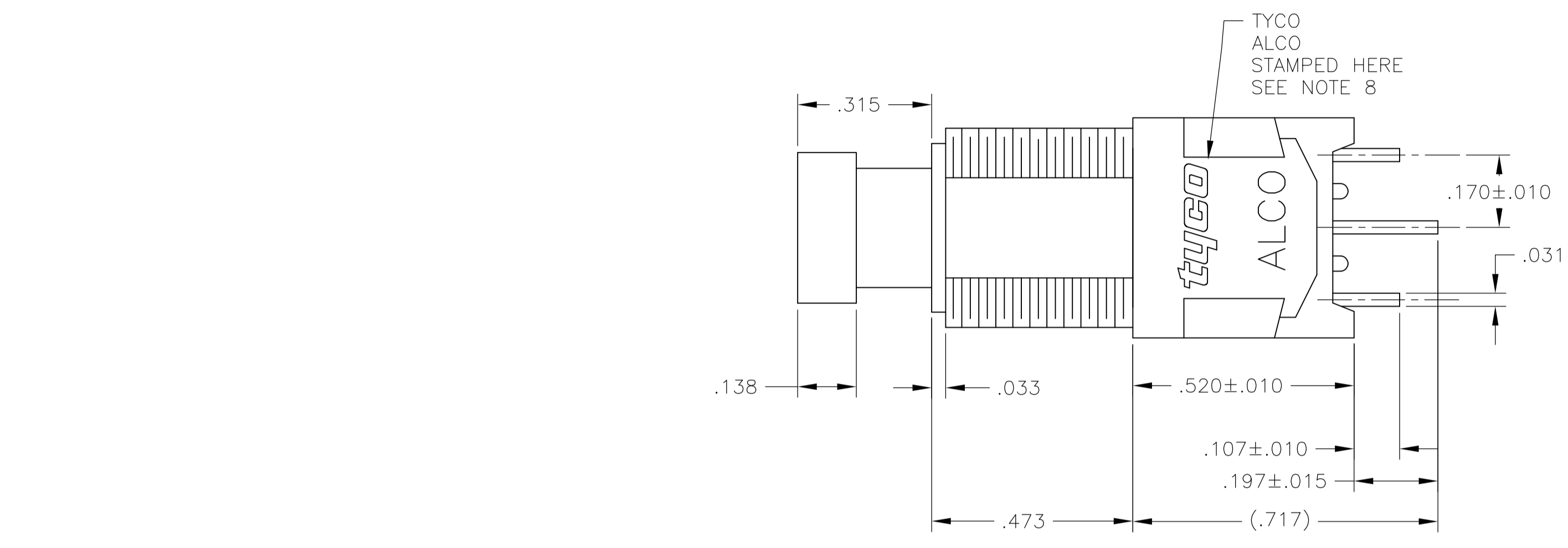


NOT TO SCALE

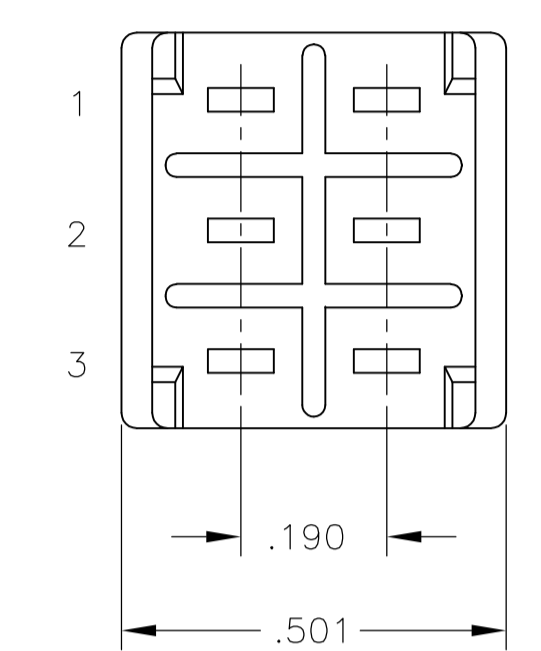
PART NUMBER	ALCO P/N	MARK SWITCH	POLES	THROWS	TERMINAL	FUNCTION		CONNECTED TERMINALS	
						ON	MOM	2-1, 5-4, 8-7, 11-10	2-3, 5-6, 8-9, 11-12
1-1825042-2	MPG406R04	MPG 406R	4	2	WIRE LUG	ON	MOM	2-1, 5-4, 8-7, 11-10	2-3, 5-6, 8-9, 11-12
1-1825042-1	MPG406N04	MPG 406N	4	2	WIRE LUG	ON	ON	2-1, 5-4, 8-7, 11-10	2-3, 5-6, 8-9, 11-12
1-1825042-0	MPG306F04	MPG 306F	3	2	WIRE LUG	ON	MOM	2-1, 5-4, 8-7	2-3, 5-6, 8-9
1825042-9	MPG306D04	MPG 306D	3	2	WIRE LUG	ON	ON	2-1, 5-4, 8-7	2-3, 5-6, 8-9
1825042-8	MPG206RPC04	MPG 206R	2	2	PC	ON	MOM	2-1, 5-4	2-3, 5-6
1825042-7	MPG206R04	MPG 206R	2	2	WIRE LUG	ON	MOM	2-1, 5-4	2-3, 5-6
1825042-6	MPG206NPC04	MPG 206N	2	2	PC	ON	ON	2-1, 5-4	2-3, 5-6
1825042-5	MPG206N04	MPG 206N	2	2	WIRE LUG	ON	ON	2-1, 5-4	2-3, 5-6
1825042-4	MPG106FPC04	MPG 106F	1	2	PC	ON	MOM	2-1	2-3
1825042-3	MPG106F04	MPG 106F	1	2	WIRE LUG	ON	MOM	2-1	2-3
1825042-2	MPG106DPC04	MPG 106D	1	2	PC	ON	ON	2-1	2-3
1825042-1	MPG106D04	MPG 106D	1	2	WIRE LUG	ON	ON	2-1	2-3

THIS DRAWING IS A CONTROLLED DOCUMENT.

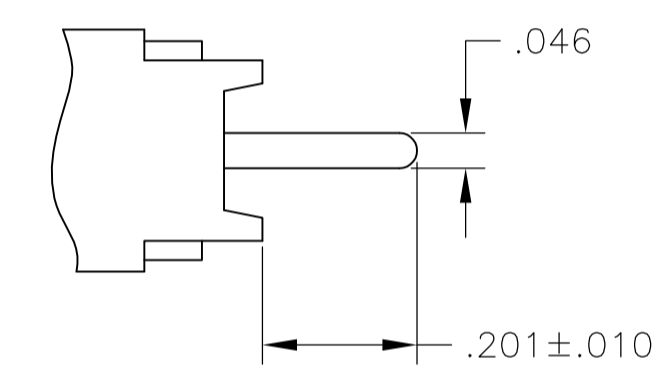
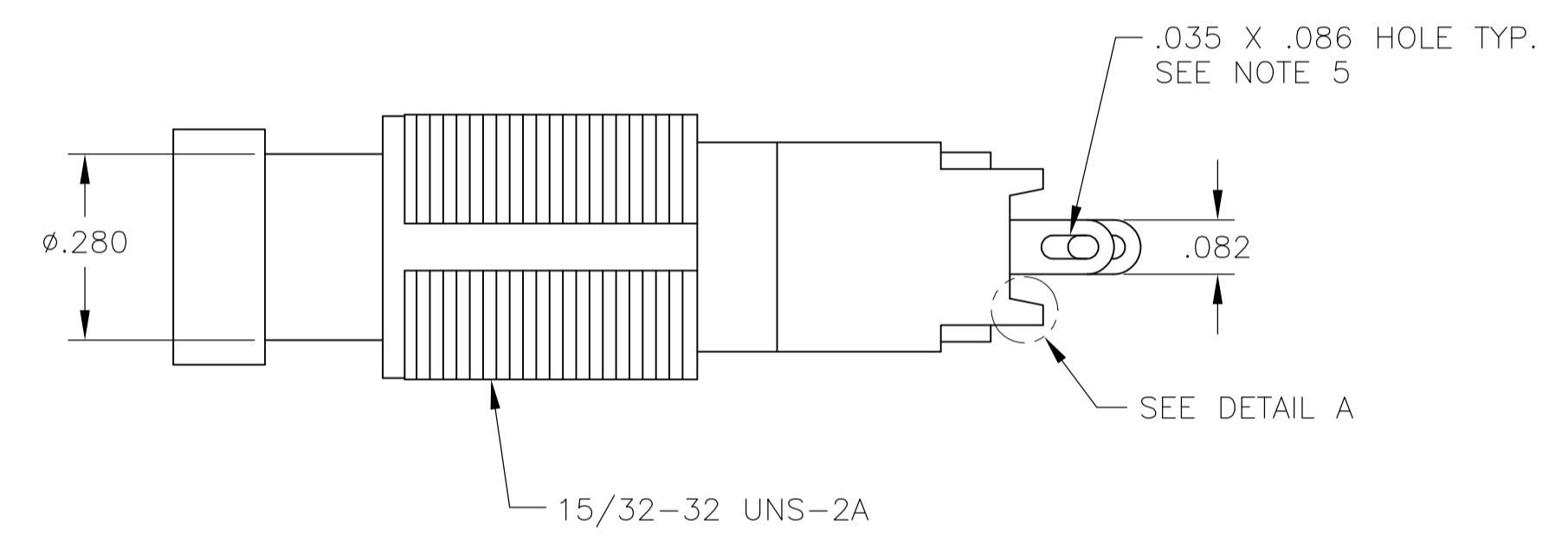
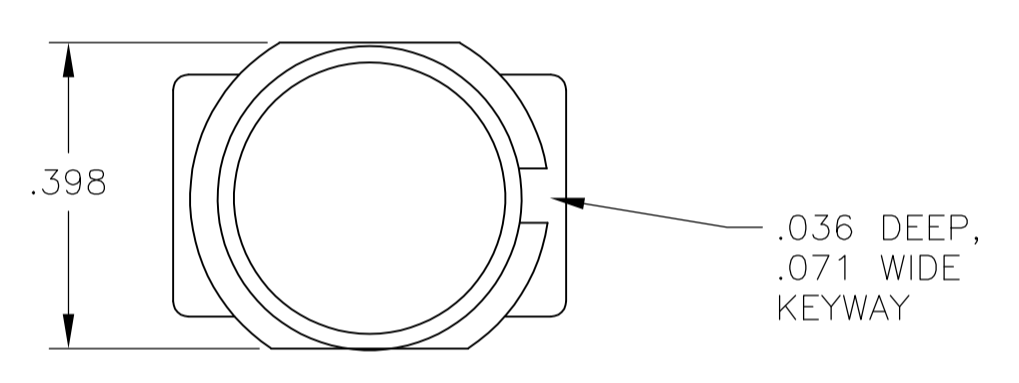
DIMENSIONS: INCHES	TOLERANCES UNLESS OTHERWISE SPECIFIED:	DIN M. BINNER 15NDV04	15NDV04	Tyco Electronics Corporation Harrisburg, PA
0. PLC ± .005	1. PLC ± .005	APVD M. ZITTO 15NDV04	NAME M. ZITTO 15NDV04	ALCOSWITCH GREEN SERIES PUSHBUTTON SWITCH, MPG SERIES
2. PLC ± .005	3. PLC ± .005	APPLICATION SPEC	SIZE A1	CAGE CODE 00779
4. PLC ± .005	ANGLES ± .005	WEIGHT	DRAWING NO. 1825042	RESTRICTED TO
MATERIAL	FINISH	CUSTOMER DRAWING	SCALE 4:1	SHEET 1 OF 3



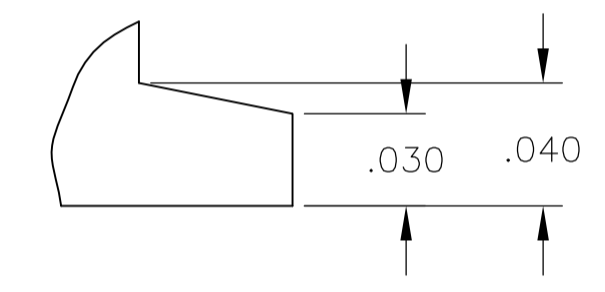
MPG106



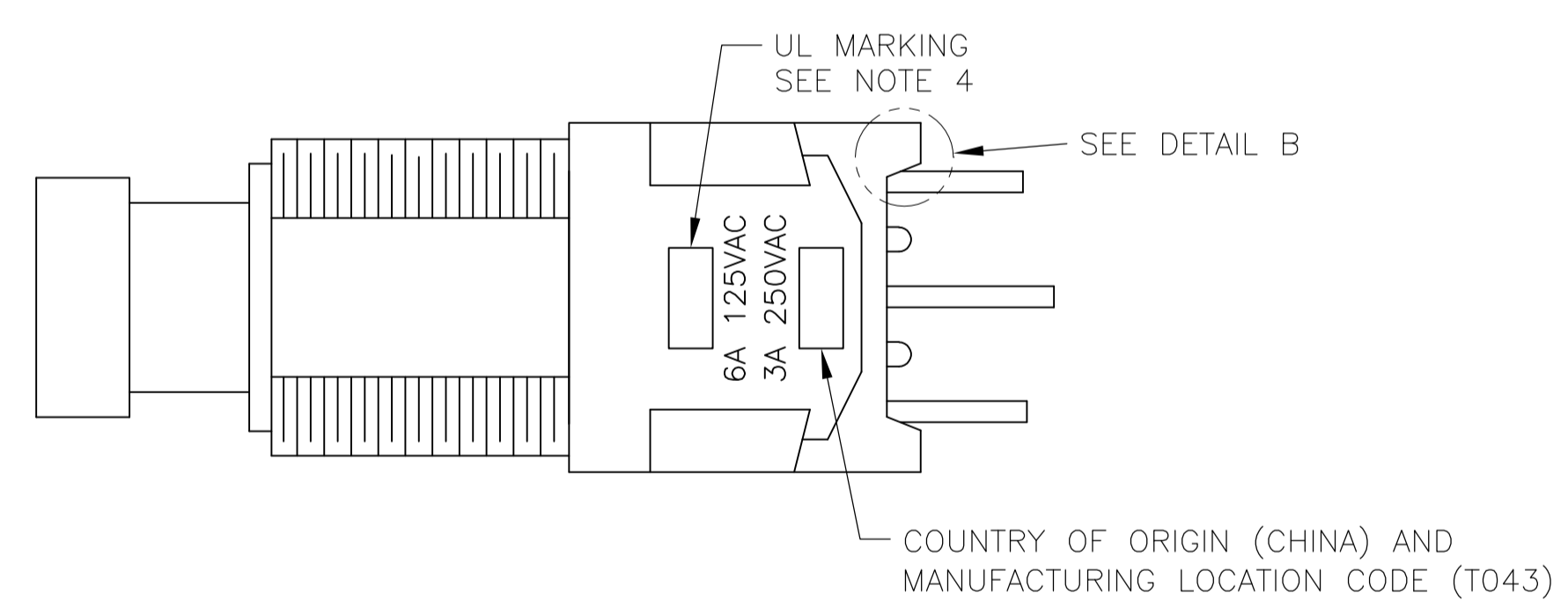
MPG206



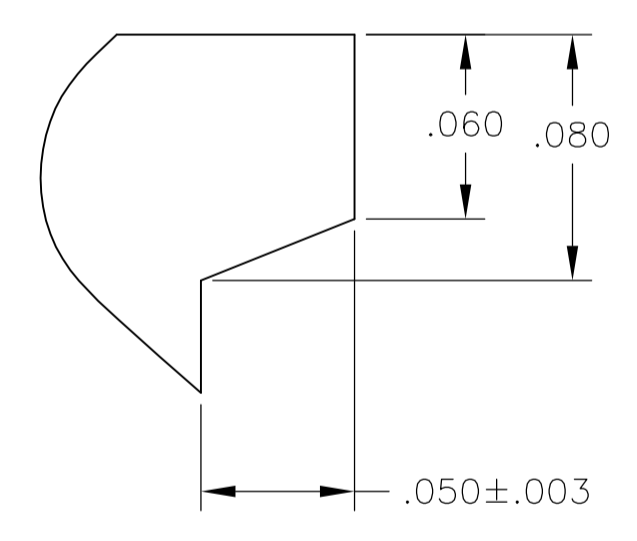
PC TERMINAL



DETAIL A
SCALE 16:1

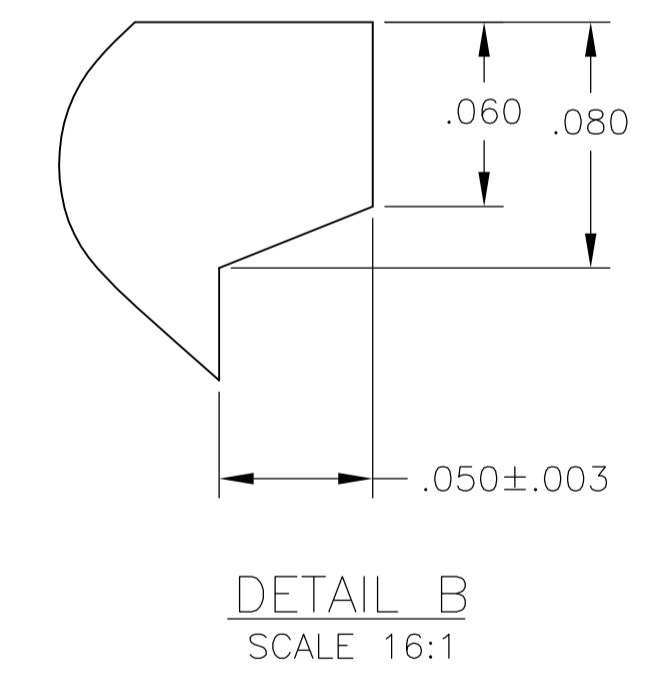
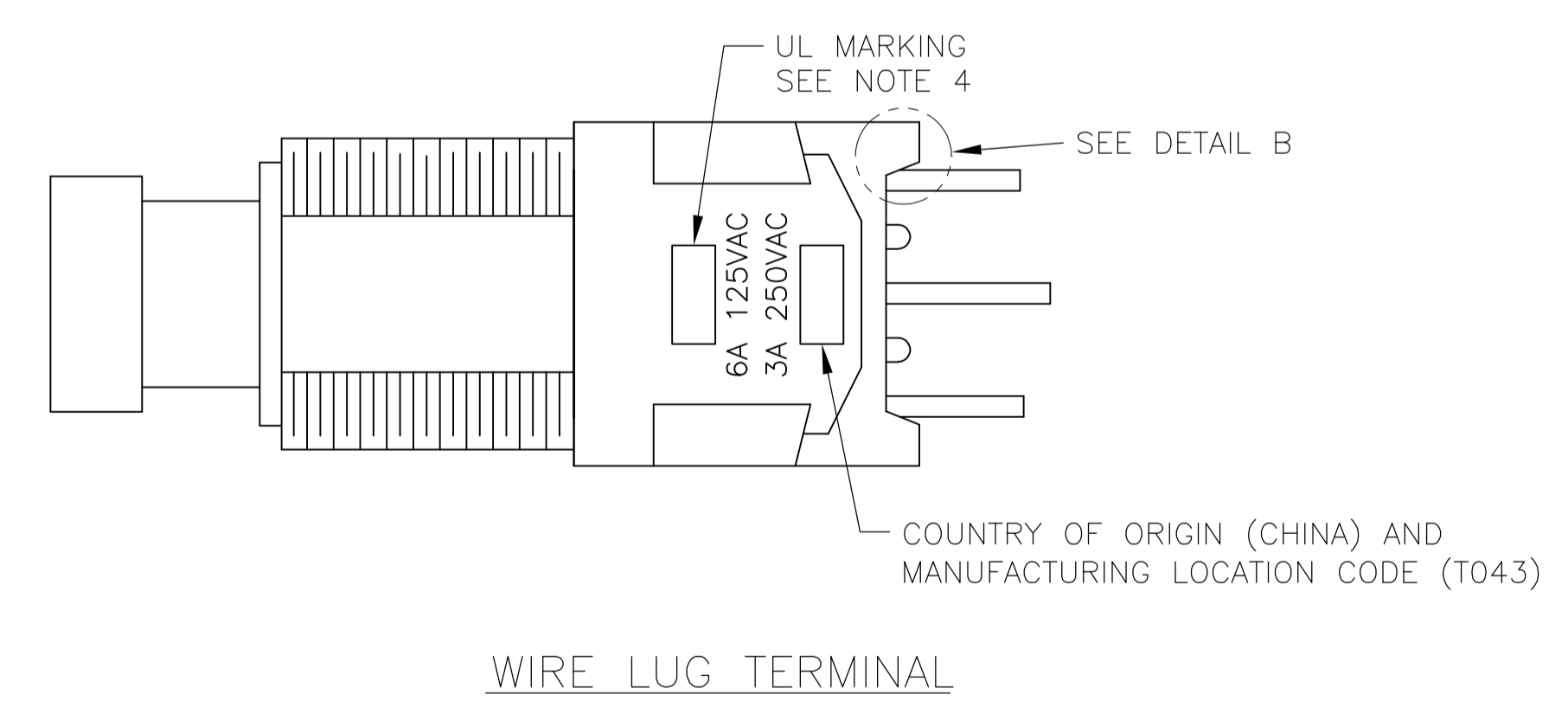
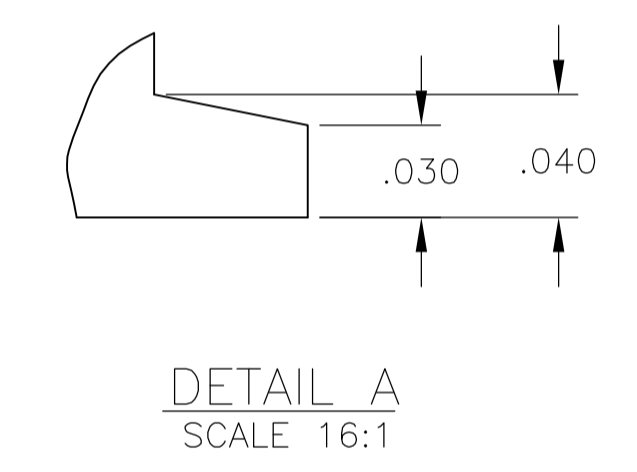
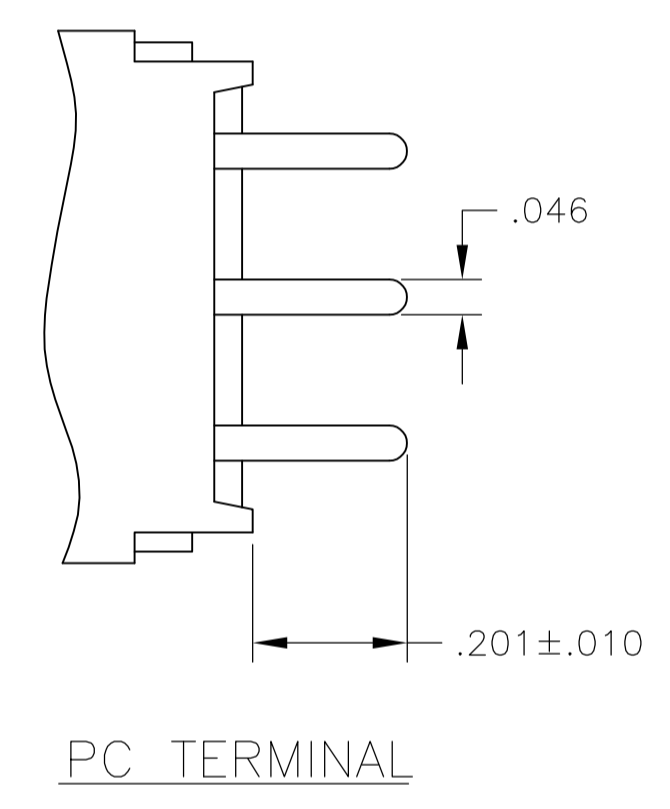
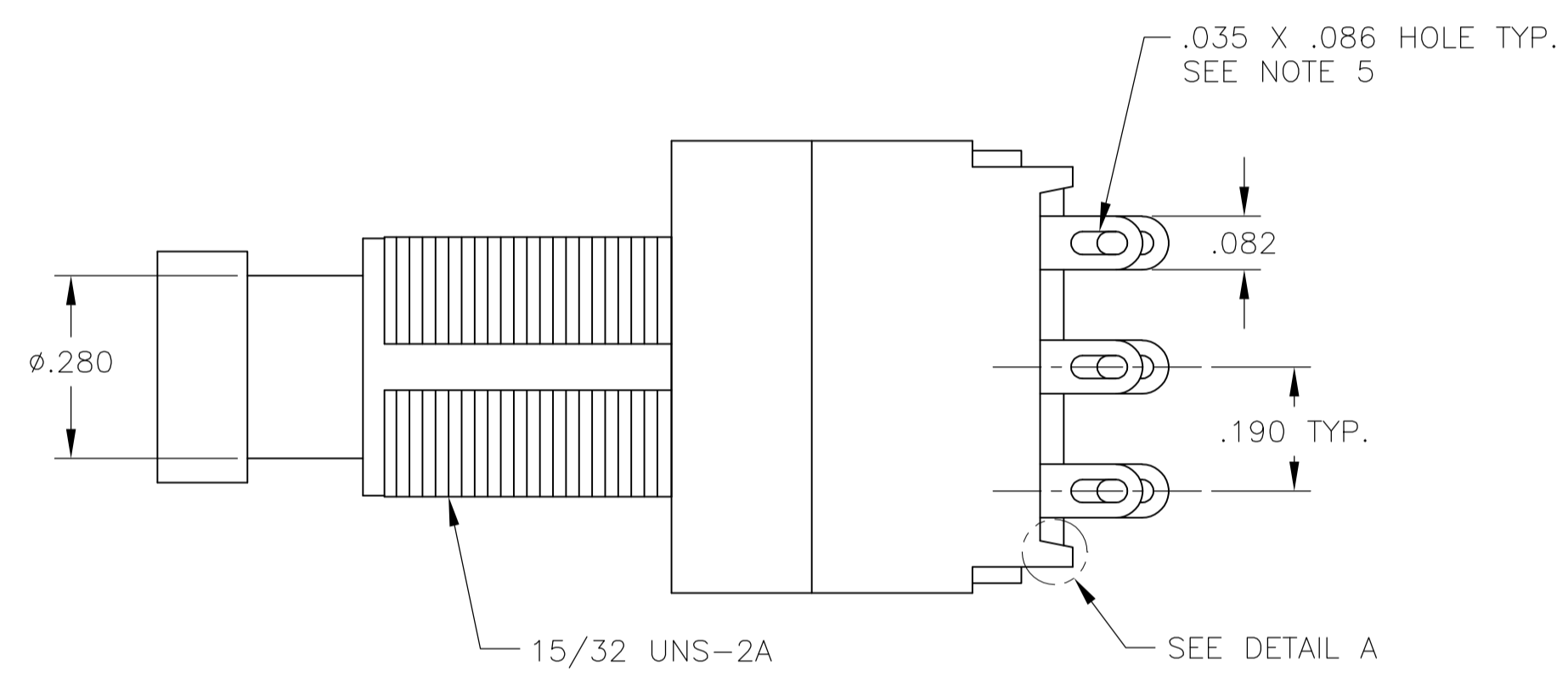
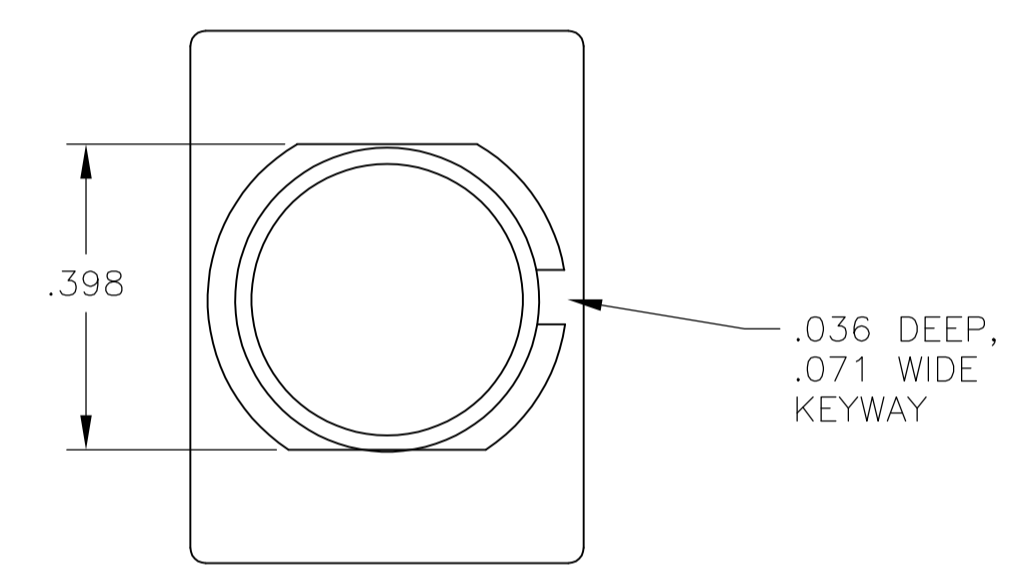
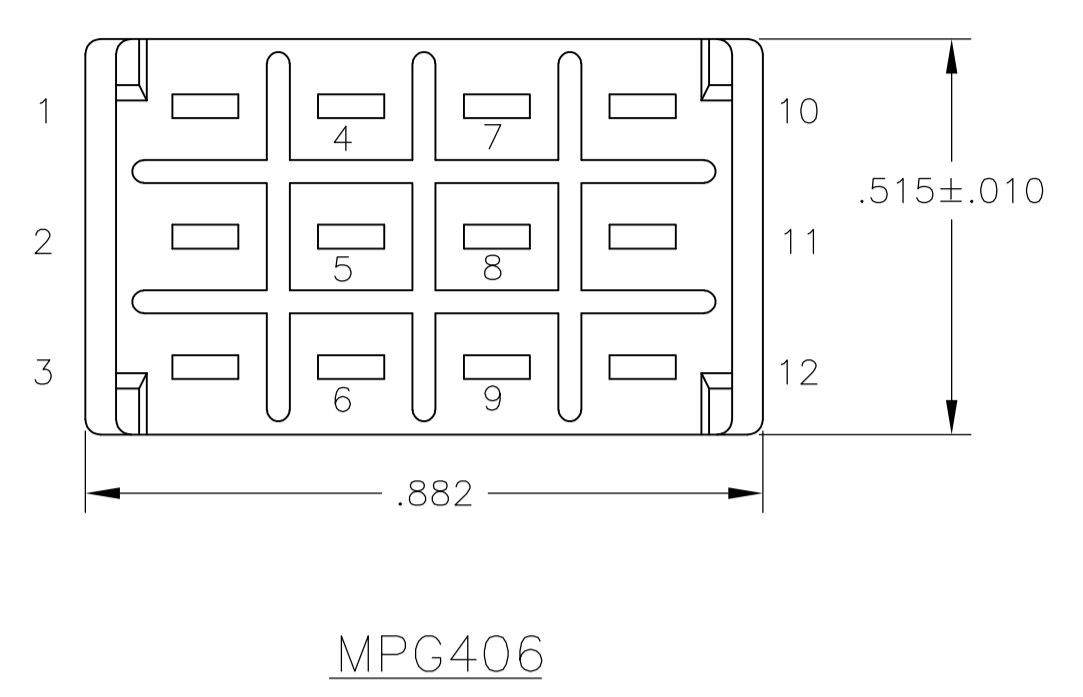
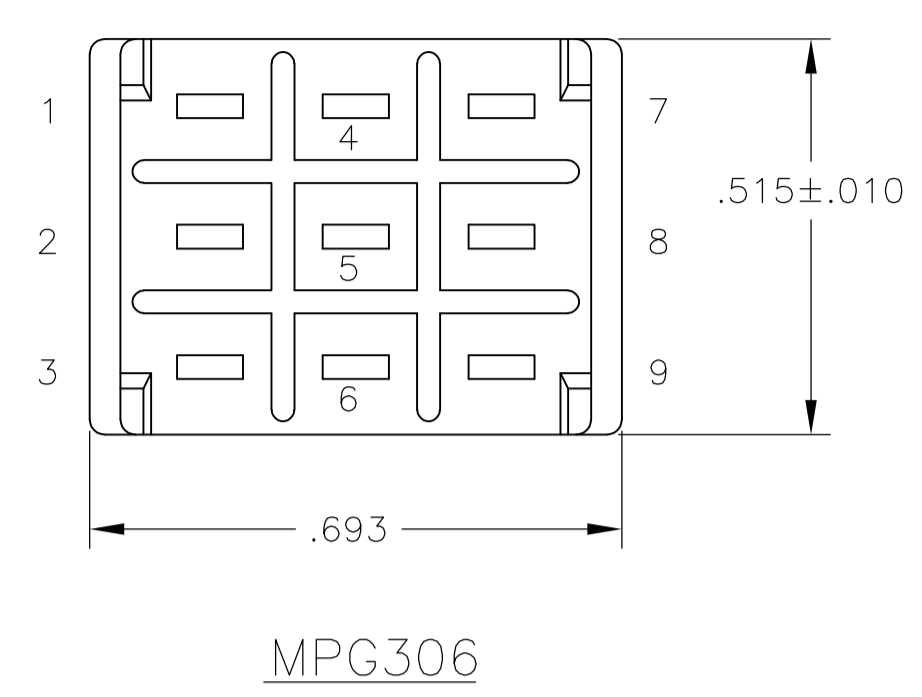
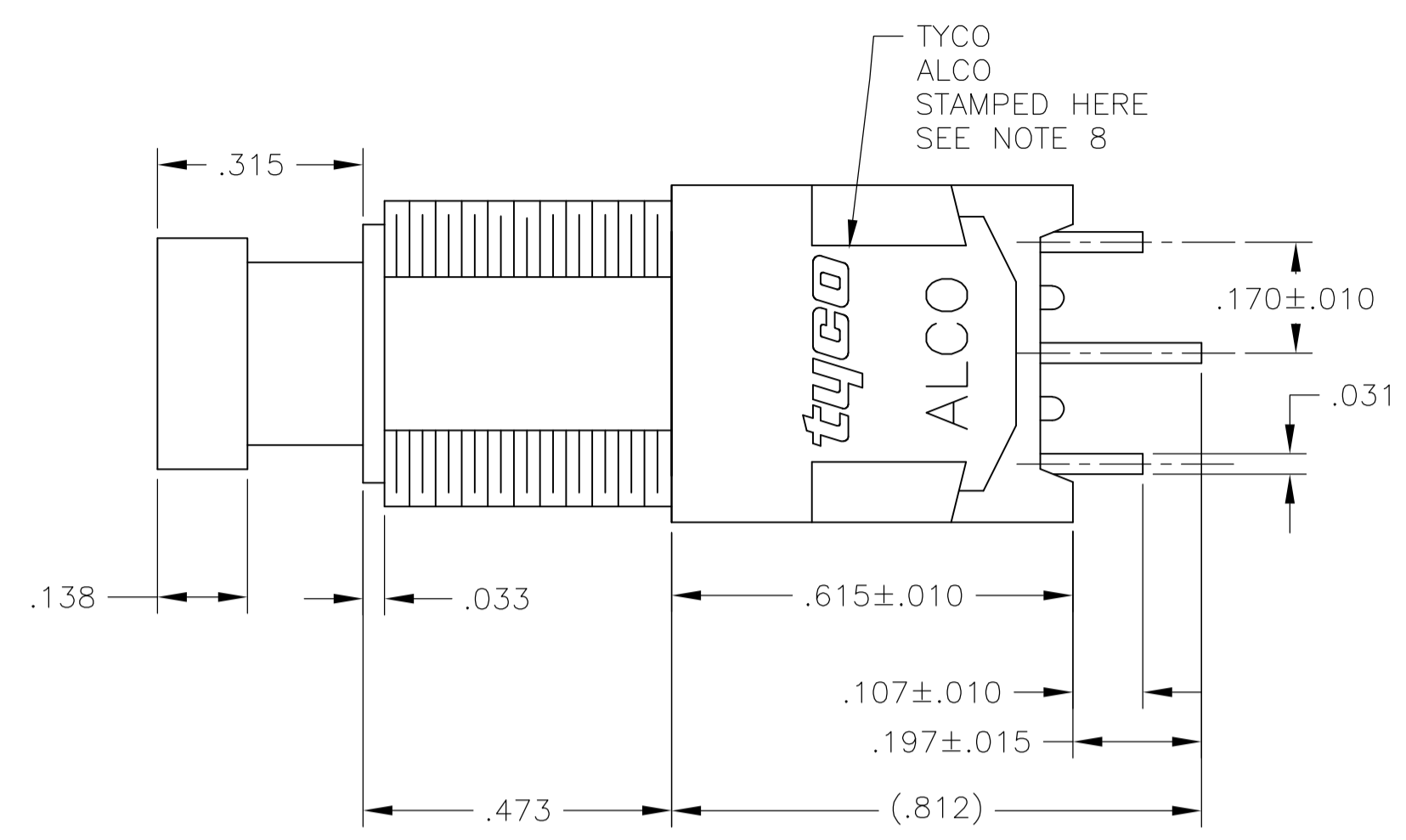


WIRE LUG TERMINAL



DETAIL B
SCALE 16:1

THIS DRAWING IS A CONTROLLED DOCUMENT.		DWN M. BINNER 15NOV04 CHK M. ZITTO 15NOV04 APVD M. ZITTO 15NOV04	Tyco Electronics Tyco Electronics Corporation Harrisburg, PA
DIMENSIONS: INCHES 0. PLC ± - 1. PLC ± - 2. PLC ± - 3. PLC ± .005 4. PLC ± - ANGLES ± -	TOLERANCES UNLESS OTHERWISE SPECIFIED: 0. PLC ± - 1. PLC ± - 2. PLC ± - 3. PLC ± .005 4. PLC ± - ANGLES ± -	NAME ALCOSWITCH GREEN SERIES PUSHBUTTON SWITCH, MPG SERIES APPLICATION SPEC SIZE A1 CAGE CODE 00779 DRAWING NO 1825042 RESTRICTED TO -	CUSTOMER DRAWING SCALE 4:1 SHEET 2 OF 3 REV B



THIS DRAWING IS A CONTROLLED DOCUMENT.		DIN M. BINNER 15NOV04	Tyco Electronics Corporation Harrisburg, PA	
DIMENSIONS: INCHES		CHK M. ZITTO 15NOV04	NAME ALCOSWITCH GREEN SERIES PUSHBUTTON SWITCH, MPG SERIES	
TOLERANCES UNLESS OTHERWISE SPECIFIED:		APPD M. ZITTO 15NOV04	PRODUCT SPEC	
0. PLC	± .005	APPLICATION SPEC		
1. PLC	± .005	WEIGHT		
2. PLC	± .005	A1 00779 C=1825042		
3. PLC	± .005	CUSTOMER DRAWING		
4. PLC	± .005	SCALE 4:1 SHEET 3 OF 3 REV B		
ANGLES	± .005			
MATERIAL				
FINISH				