

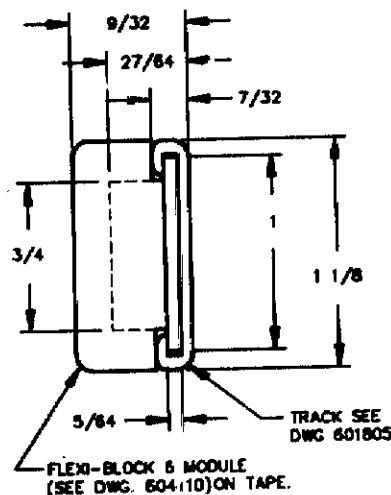
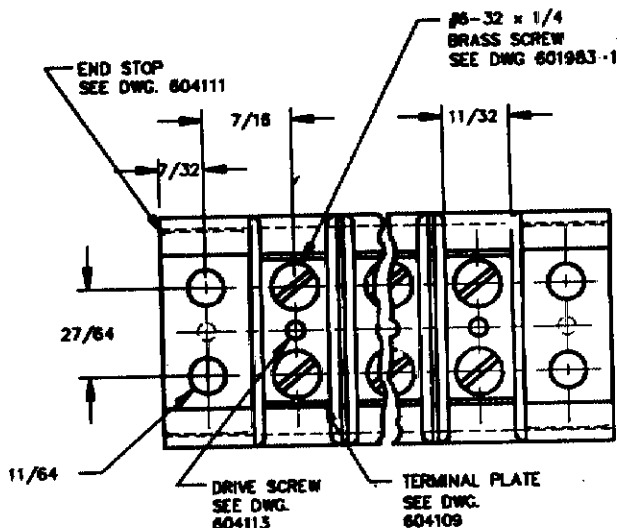
RELEASE FOR PUBLICATION FEB 20 1991
BY AMP INCORPORATED. ALL RIGHTS RESERVED.

THIS DRAWING IS UNPUBLISHED.

© COPYRIGHT 1990

NOTES:

1. P/N 604102-1 REPRESENTS A CONTINUOUS STRIP MODULES ON TAPE. FOR CUT LENGTHS SEE DWG. 604141.
2. P/N 1-604102-1 REPRESENTS A PACKAGE OF 100 MODULES ON TAPE IN PRE-PRINTED BOX.
3. P/N 2-604102-1 REPRESENTS A PACKAGE OF 500 MODULES ON TAPE IN PRE-PRINTED BOX.
4. SYSTEM DIMENSION FOR REFERENCE ONLY.



	2-604102-1	FLEXI-BLOCK 6 (500 MODULES ON TAPE)	
	1--604102-1	FLEXI-BLOCK 6 (100 MODULES ON TAPE)	
	604102-1	FLEXI-BLOCK 6 (FOR CUT LENGTH SEE DRAWING 604192)	


DWG SIZE	PART No.	DESCRIPTION	ITEM

LDC
D

DIST
1

REVISION OF EACH ASSY NO. (WHEN BLANK, USE DWG REVISION)

QTY. REQ'D. PER ASSY. PARTS LIST

MATERIAL NYLON 6/6 BLUE		HEAT TREAT <u> H </u>		FINISH <u> H </u>	
DIMENSIONS ARE IN INCHES		DRAWN BY: <i>amari-cad imaging</i>	DATE: 2/11/91	APPROVED BY:	
TOLERANCES UNLESS OTHERWISE SPECIFIED:		CHECK BY:		RELEASE: <i>J. Hamel 2/20/91</i>	
2 PL DEC ±.02		 AMP INCORPORATED Harrisburg, Pa.			
3 PL DEC ±.005					
4 PL DEC ±.0005					
ANGLES ±0° 30'		NAME: FLEXI-BLOCK 6 SYSTEM W/BRASS SCREWS			
FRACTIONS ± 1/64					
SURF TEXTURE: REMOVE BURRS, BREAK SHARP EDGES, .015 R. MAX.					

J	ECN 12591 CAD	2/11	2/91	SCALE: NTS	A	DRAWING No.: 604102	SHEET: 1 OF 1	REV.: J
P	F	LTR	REVISION RECORD	APP	DATE			