

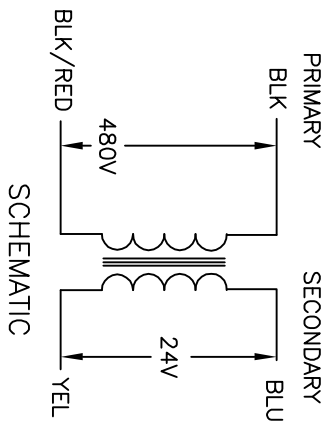
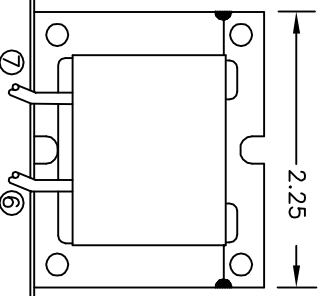
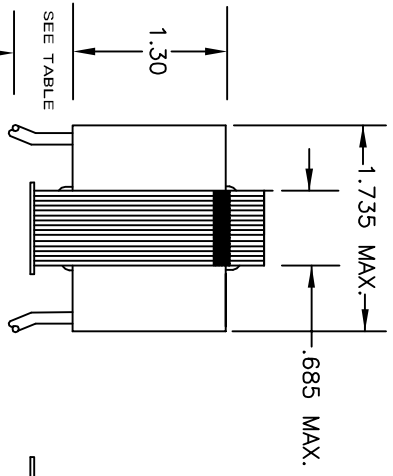
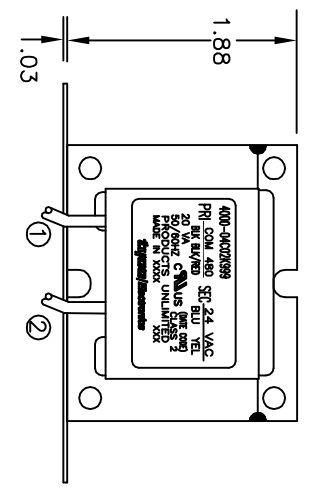
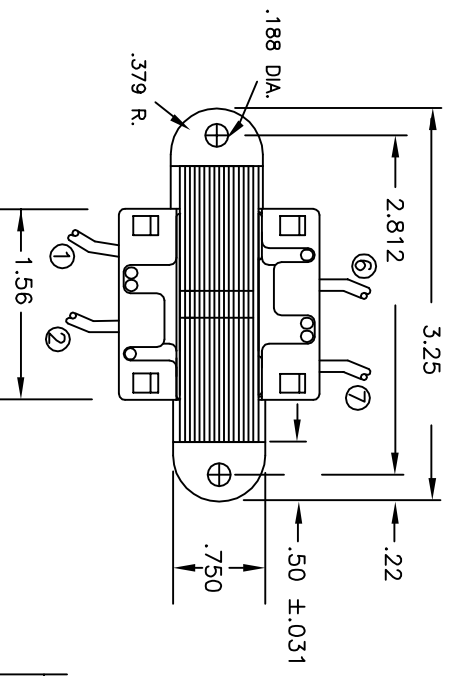
ALL LEADS 18AWG-UNLESS OTHERWISE SPECIFIED

LEAD NO.	COM	VOLTAGE	COLOR	LENGTH	STRIP LENGTH
1	COM	480	BLK	12.0	.50
2	COM	480	BLK/RED	12.0	.50
3	COM	24	BLU	12.0	.50
4	COM	24	YEL	12.0	.50

NOTES:  
 1. DIMENSIONS FOR REFERENCE ONLY.  
 2. ALL LEADS +17/-0° TOL.  
 3. STRIP TOL. ±1/32  
 4. WINDING PROTECTION-INHERENTLY LIMITING

LEAD NO.	VOLTAGE	COLOR	LENGTH	STRIP LENGTH
6	24	BLU	12.0	.50
7	24	YEL	12.0	.50

CERTIFICATION:  
 UL & CUL FILE NO. E87824



THIS DRAWING IS A CONTROLLED DOCUMENT.

DIMENSIONS:	TOLERANCES UNLESS OTHERWISE SPECIFIED:
INCHES	±.01
0 PLG	±.01
1 PLG	±.01
2 PLG	±.01
3 PLG	±.01
4 PLG	±.01
ANGLES	±.1°
FINISH	-

DMN	M.DAVIS	02FEB04
CHK	W.SORAH	02FEB04
APP'D	W.SORAH	02FEB04
PRODUCT SPEC		
APPLICATION SPEC		
WEIGHT		
CUSTOMER DRAWING		

CUST. NO. -

TYCO PART NUMBER 8-1611476-0

Products Tyco Electronics Corporation  
 www.tycoelectronics.com Harrisburg, Pa 17105-3608

TRANSFORMER OUTLINE

SIZE	CAGE CODE	DRAWING NO	RESTRICTED TO
A3	00779	C=4000-04C02K999	-

SCALE NTS SHEET 1 OF 1 REV A