

4

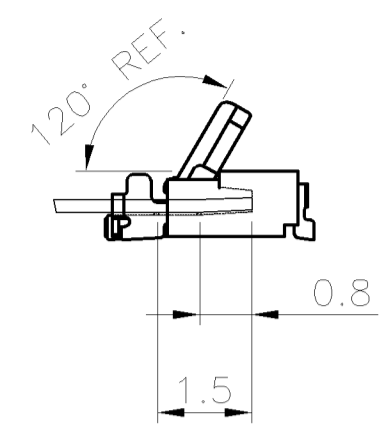
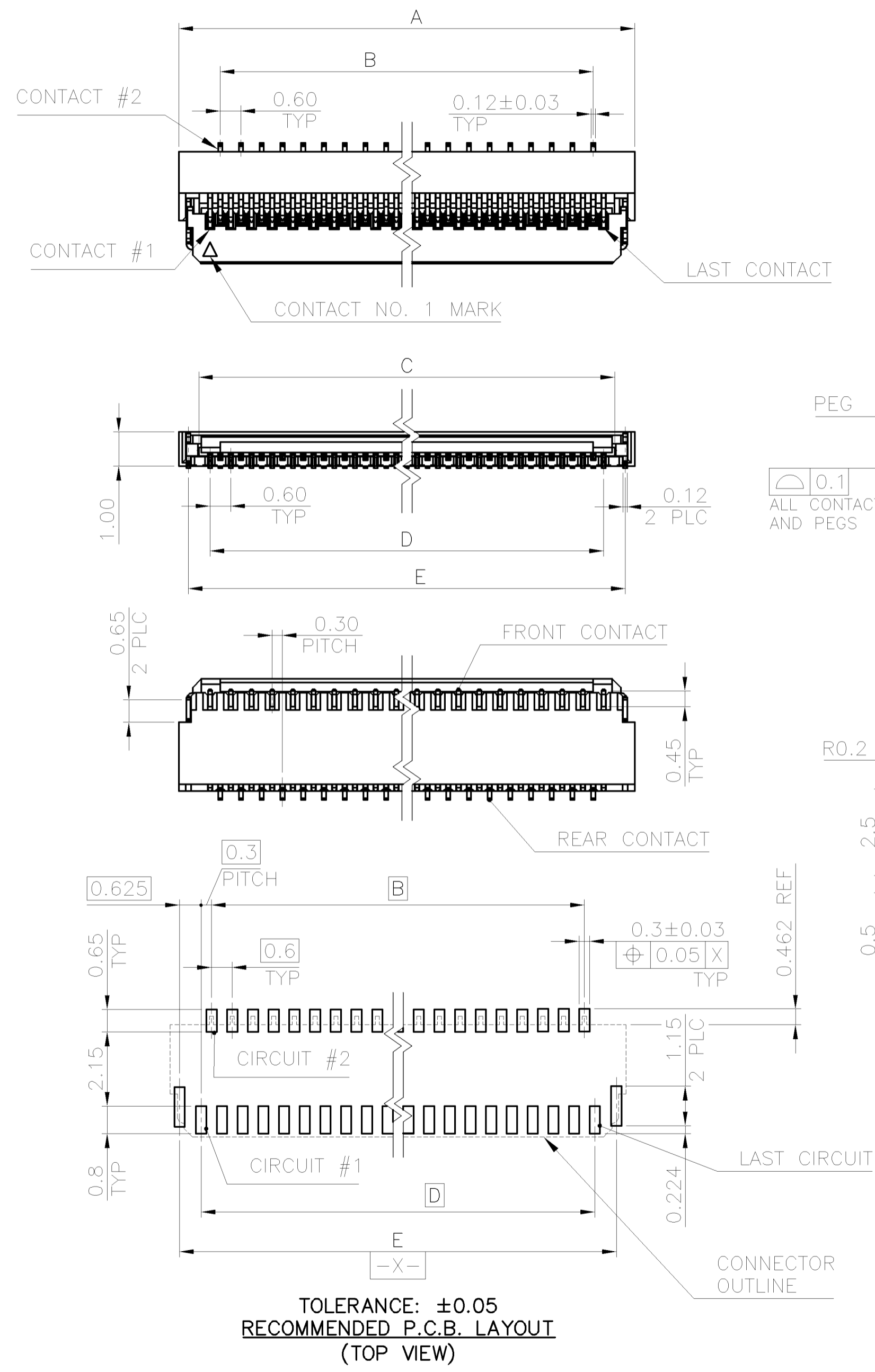
3

2

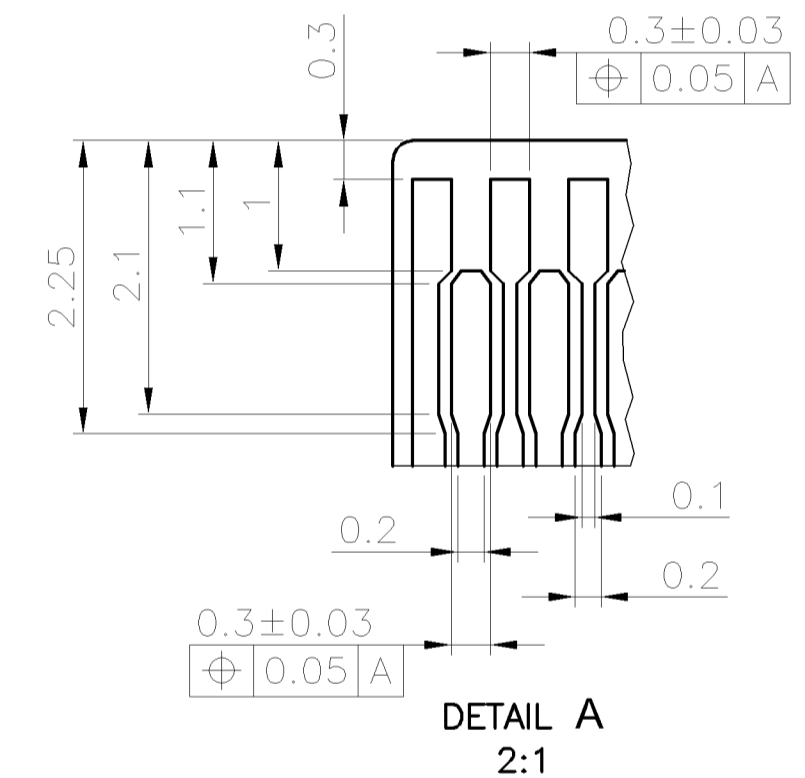
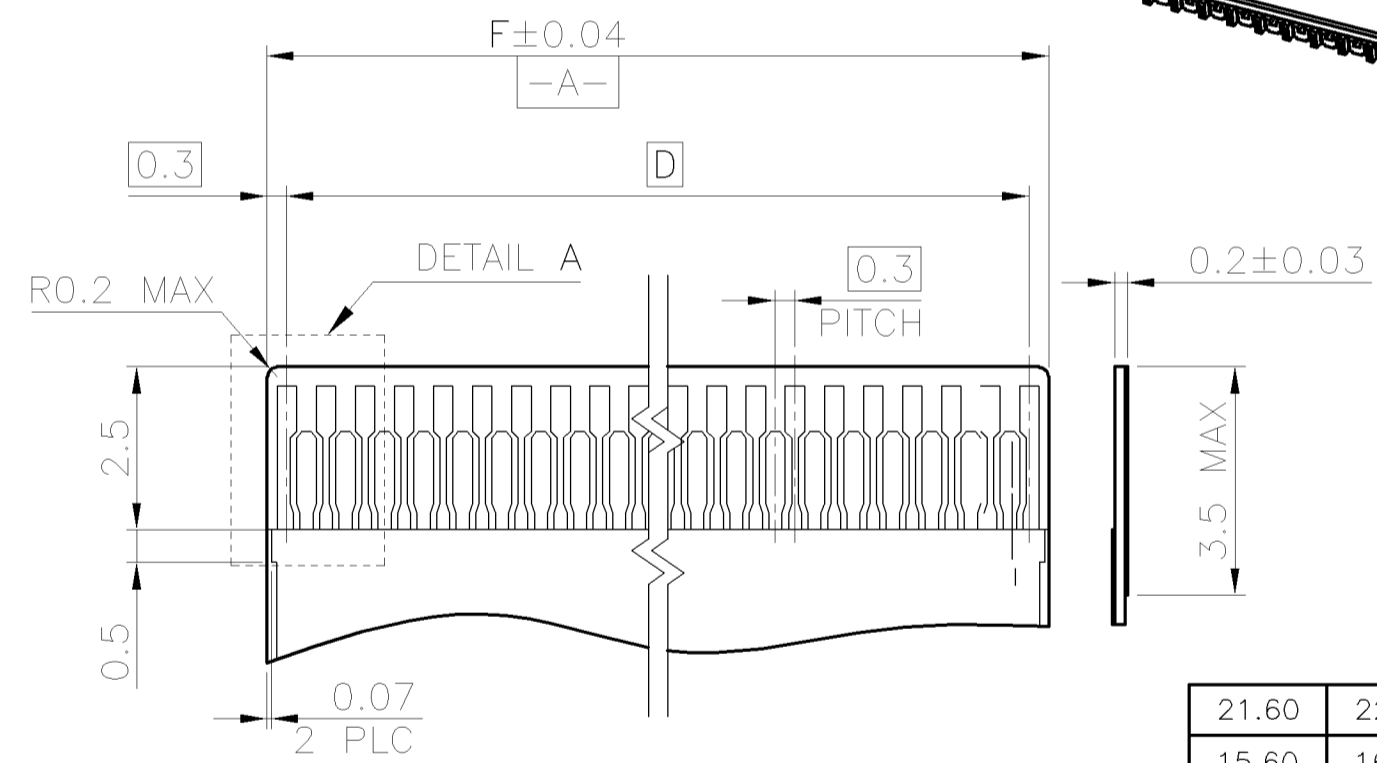
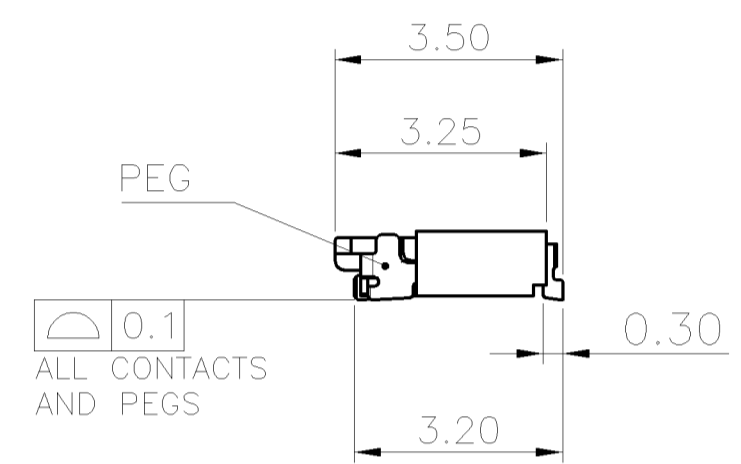
1

THIS DRAWING IS UNPUBLISHED. RELEASED FOR PUBLICATION
 © COPYRIGHT 2011 BY TE CONNECTIVITY. ALL RIGHTS RESERVED.

LOC	DW	DIST	REVISIONS					
			P	LTR	DESCRIPTION	DATE	DWN	APVD
				C	ECR-11-023831	23NOV11	AW	WK



- NOTES:
- MATERIAL:
 HOUSING: LCP, UL94 V-0, BLACK COLOR.
 ACTUATOR: LCP, UL94 V-0, NATURAL COLOR.
 CONTACTS: PHOSPHOR BRONZE.
 PEGS: PHOSPHOR BRONZE.
 - FINISH:
 CONTACTS: GOLD FLASH PLATED ON CONTACT AREA AND SOLDER TAIL, WITH ENTIRE CONTACT UNDERPLATED 1.27µm [50µ"] MIN. NICKEL.
 PEGS: GOLD FLASH PLATED OVER 1.27µm [50µ"] MIN. NICKEL
 - REFLOW SOLDER CAPABLE TO 260°C PER TEC-109-201, CONDITION B.
 - SUBSTANCE RESTRICTIONS FOR LOW HALOGEN (BY WEIGHT):
 - BROMINE (Br) ≤ 900 PPM (0.09%)
 - CHLORINE (Cl) ≤ 900 PPM (0.09%)
 - TOTAL CONCENTRATION OF CHLORINE (Cl) + BROMINE (Br) ≤ 1500 PPM (0.15%)



21.60	22.25	21.00	21.65	20.40	22.80	71	7-2041390-1
15.60	16.25	15.00	15.65	14.40	16.80	51	5-2041390-1
13.80	14.45	13.20	13.85	12.60	15.00	45	4-2041390-5
12.00	12.65	11.40	12.05	10.80	13.20	39	3-2041390-9
F	E	D	C	B	A	NO. OF CONTACTS	PART NUMBER

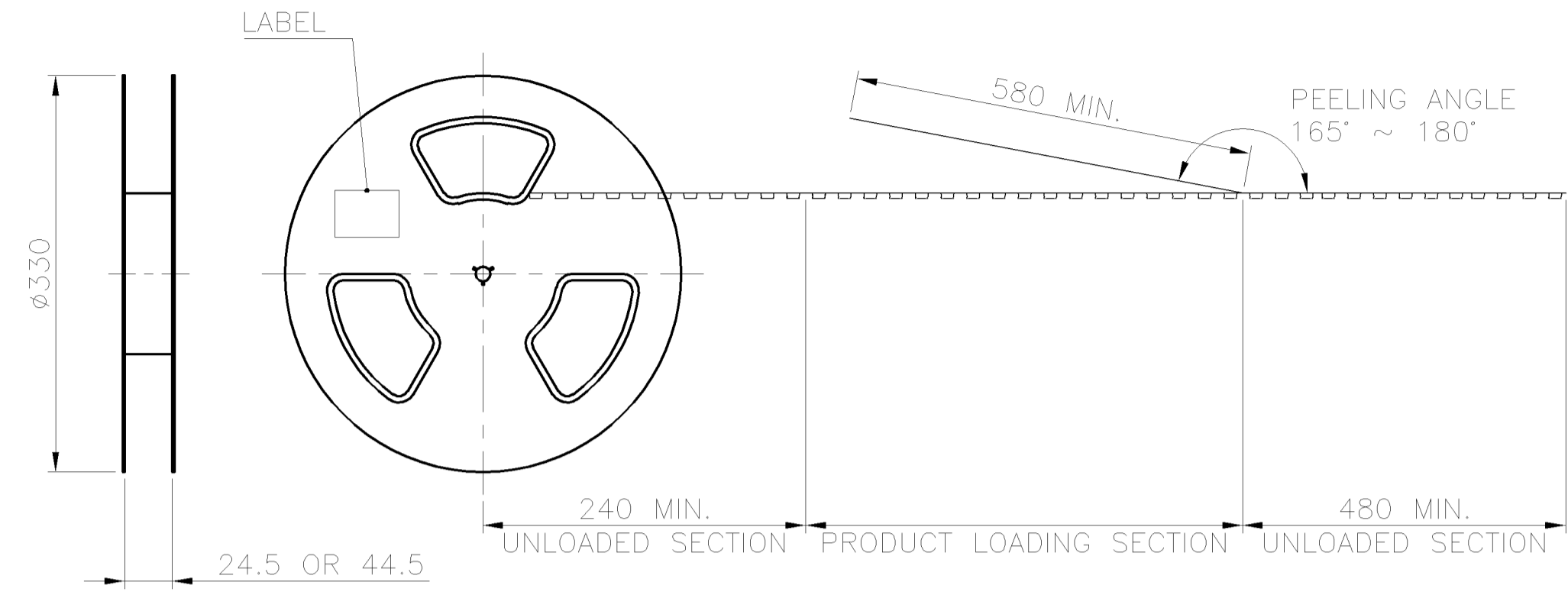
THIS DRAWING IS A CONTROLLED DOCUMENT.

DIMENSIONS: MM	TOLERANCES UNLESS OTHERWISE SPECIFIED:	DWN A. WU 15JUN2011	TE Connectivity								
	0 PLC ± -	CHK S. CHIEN 15JUN2011									
	1 PLC ± 0.3	APVD W. KODAMA 15JUN2011									
	2 PLC ± 0.2	NAME									
MATERIAL SEE NOTE	FINISH SEE NOTE	PRODUCT SPEC 108-57877	FPC CONNECTOR, 0.3 PITCH, ZIF, BOTTOM CONTACT								
		APPLICATION SPEC -	<table border="1"> <tr> <td>SIZE</td> <td>CAGE CODE</td> <td>DRAWING NO</td> <td>RESTRICTED TO</td> </tr> <tr> <td></td> <td></td> <td></td> <td></td> </tr> </table>	SIZE	CAGE CODE	DRAWING NO	RESTRICTED TO				
SIZE	CAGE CODE	DRAWING NO	RESTRICTED TO								
		WEIGHT -	<table border="1"> <tr> <td>SCALE</td> <td>SHEET</td> <td>REV</td> </tr> <tr> <td>-</td> <td>1 OF 2</td> <td>C</td> </tr> </table>	SCALE	SHEET	REV	-	1 OF 2	C		
SCALE	SHEET	REV									
-	1 OF 2	C									

CUSTOMER DRAWING

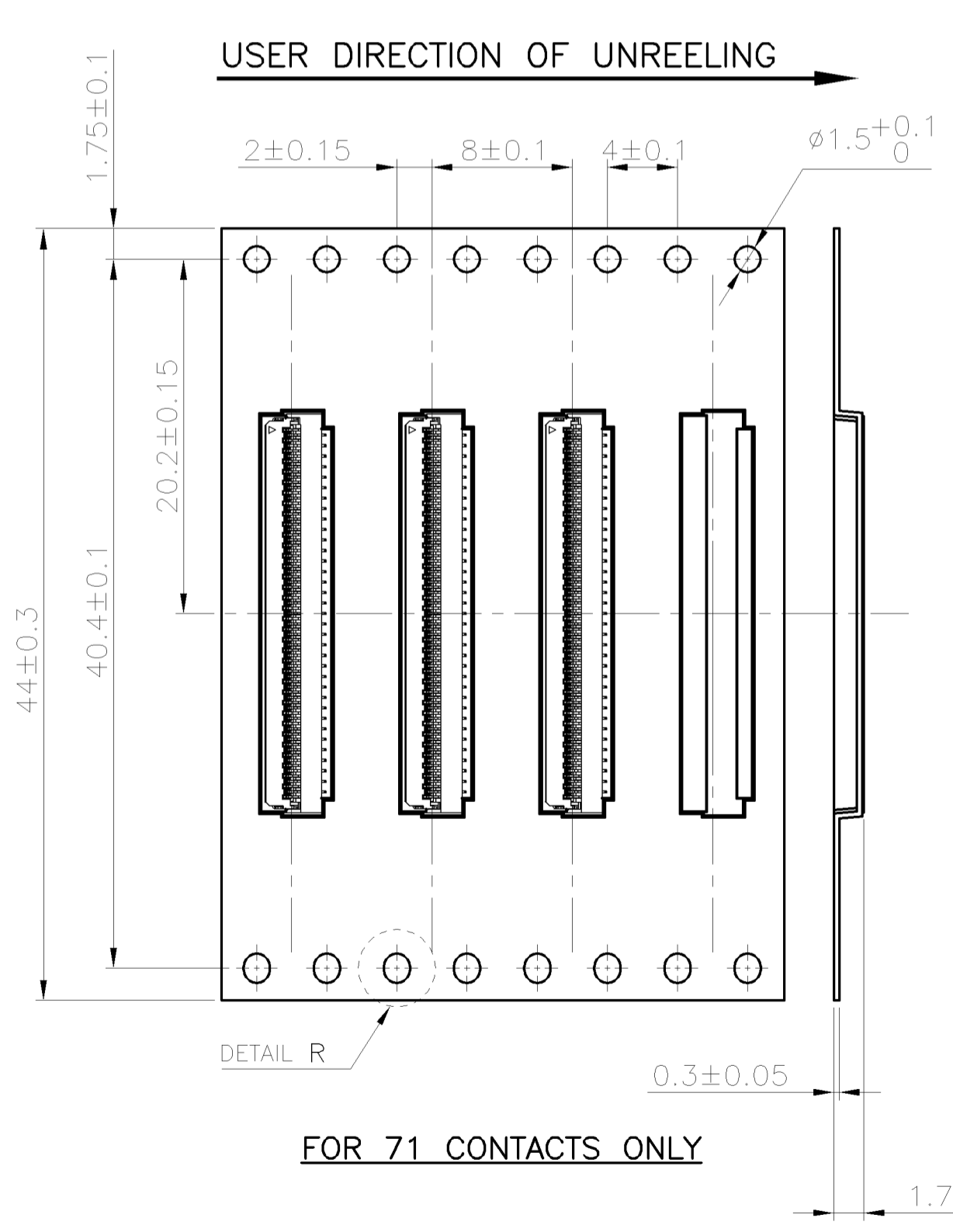
THIS DRAWING IS UNPUBLISHED. RELEASED FOR PUBLICATION
 © COPYRIGHT 2011 BY TE CONNECTIVITY. ALL RIGHTS RESERVED.

LOC DW	DIST —	REVISIONS			
P	LTR	DESCRIPTION	DATE	DWN	APVD
		SEE SHEET 1			

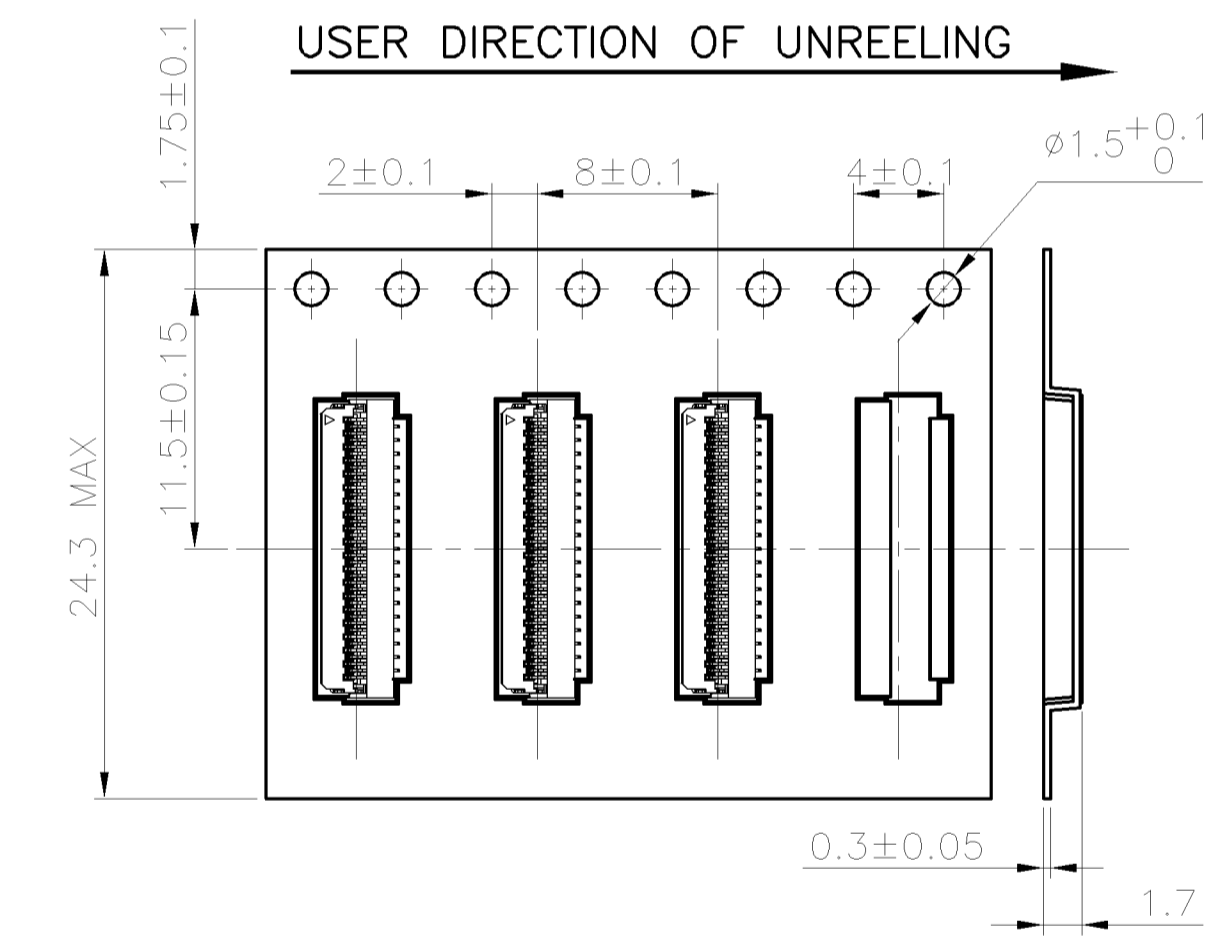


NOTES:

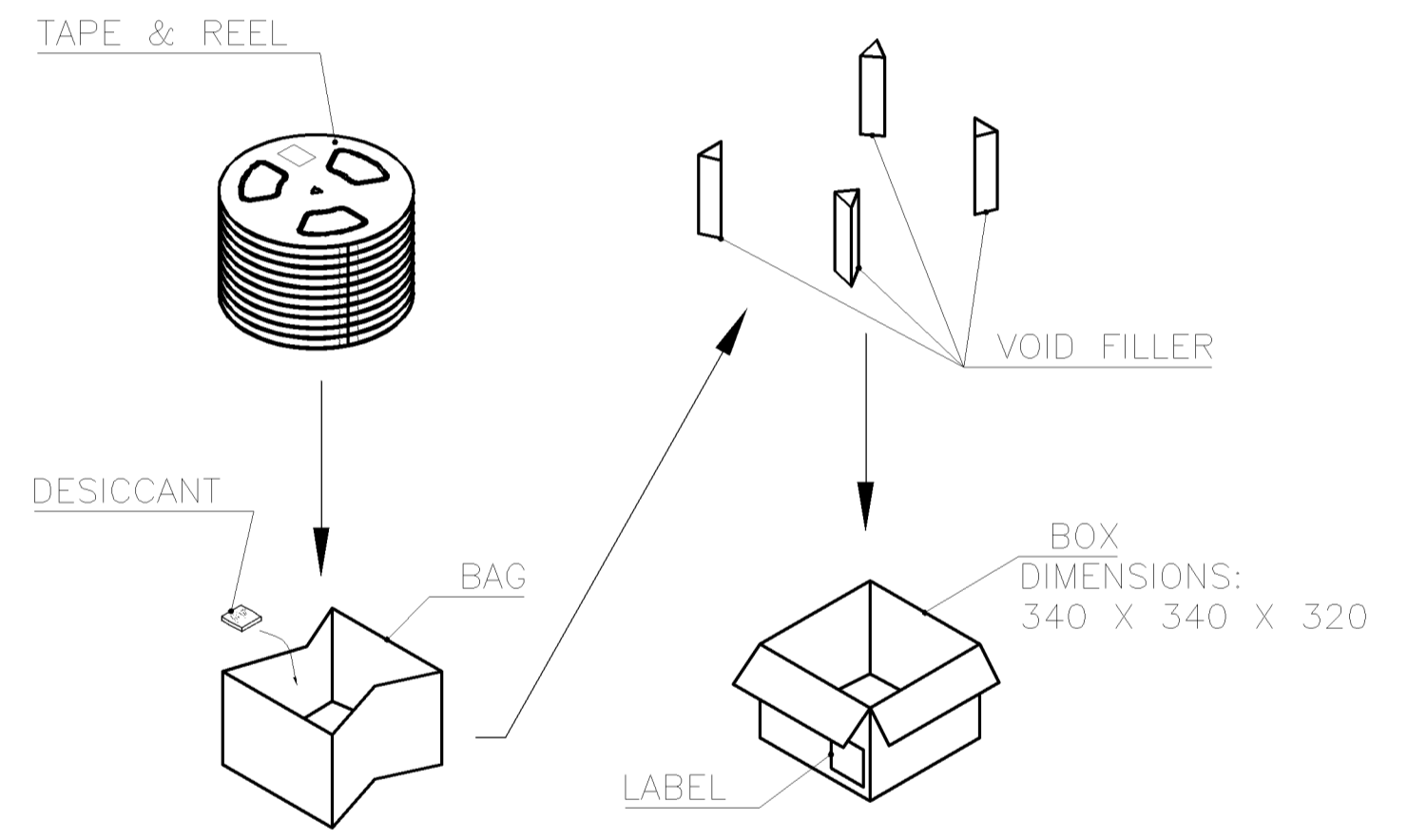
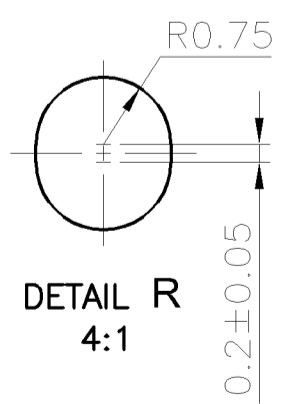
- MATERIAL:
 BOX: FIBREBOARD, CORRUGATED, DOUBLE WALL.
 COVER TAPE: PET, TRANSPARENT.
 CARRIER TAPE: POLYSTYRENES, TRANSPARENT.
 REEL: HIPS, BLUE COLOR.
 BAG: POLYETHYLENES, TRANSPARENT.
- EACH BAG SHALL BE INCLUDED DESICCANT.
- PEELING STRENGTH: 0.1 ~ 1.3 N (10 ~ 130 GRAMS).
- PEELING SPEED: 300 mm/min.



FOR 71 CONTACTS ONLY



FOR 39, 45 & 51 CONTACTS ONLY



27000	6	4500	4.56	9.56	71
45000	10	4500	4.41	9.41	51
45000	10	4500	3.96	8.96	45
45000	10	4500	3.42	8.42	39
PCS /BOX	REELS /BOX	PCS /TAPE	N/W (Kg)	G/W (Kg)	NO. OF CONTACTS

THIS DRAWING IS A CONTROLLED DOCUMENT.		DWN A. WU	15JUN2011	TE Connectivity			
DIMENSIONS: MM		CHK S. CHIEN	15JUN2011				
TOLERANCES UNLESS OTHERWISE SPECIFIED:		APVD W. KODAMA	15JUN2011				
0 PLC ± - 1 PLC ± - 2 PLC ± - 3 PLC ± - 4 PLC ± - ANGLES ± - MATERIAL — FINISH —		NAME					
		PRODUCT SPEC		FPC CONNECTOR, 0.3 PITCH, ZIF, BOTTOM CONTACT			
MATERIAL		APPLICATION SPEC		SIZE	CAGE CODE	DRAWING NO	RESTRICTED TO
		WEIGHT		A3	00779	C=2041390	—
CUSTOMER DRAWING				SCALE	—	SHEET	2 OF 2
						REV	C