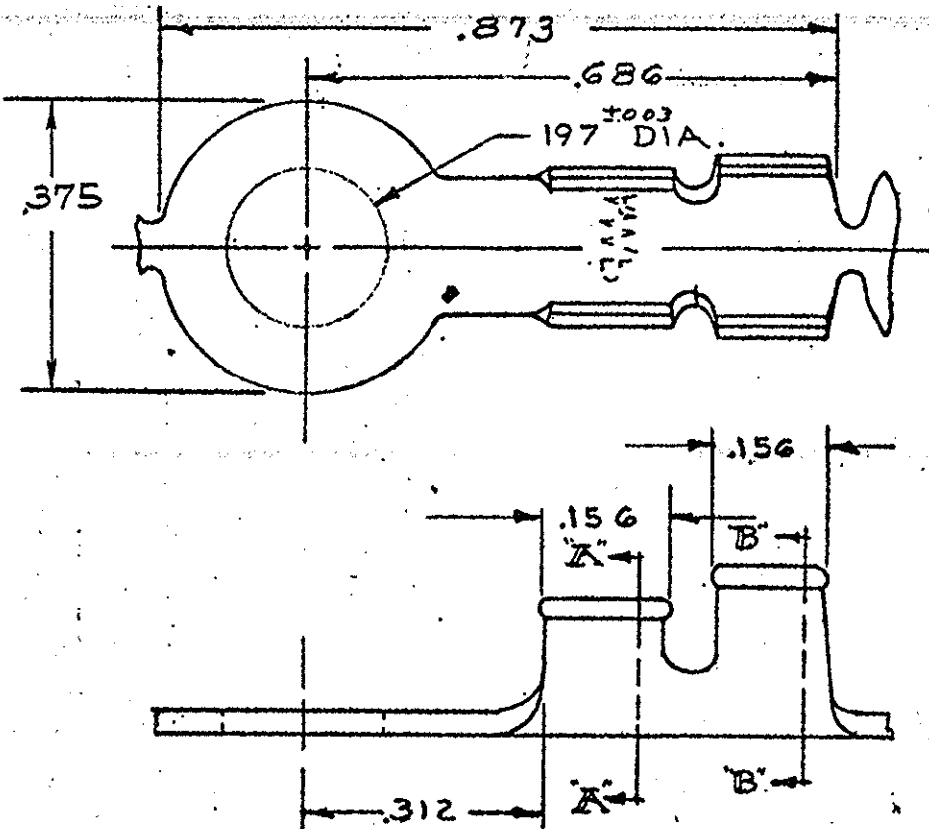


NUMBER 640007



SECT. A-A

SECT. B-B

1 CONTINUOUS STRIP, ON REELS

PART NO.	FINISH
640007-1	BRIGHT TIN
640007-3	TIN

UNPUBLISHED COPY NOT TO BE REPRODUCED NOR PUBLISHED WITHOUT WRITTEN PERMISSION OF AMP INCORPORATED.

©1973 BY AMP INCORPORATED. ALL RIGHTS RESERVED. AMP PRODUCTS COVERED BY PATENTS AND/OR PATENTS PENDING

CUSTOMER COPY REFERENCE ONLY



AMP INCORPORATED
HARRISBURG, PENNA.

REV	PER	DATE	BY	CHK	DATE
C1	REV PER ECR-06-000453	9-27-73	MF	DD	9-27-73
C	REV PER 063A-0348-03	9-27-73	MF	DD	9-27-73
B	REV PER	5-11-73	MSF	DD	5-11-73
A	REV PER AI-6785	7-19-70	PMF	DD	7-19-70
LTR	REVISION RECORD		ECN	DB	CHK
DR	G Yetter 8-9-73		DE	A.E. THORP	8-13-73
CHK	8-13-73		APP		

MATERIAL AND FINISH
.030 BRASS
FINISH: SEE TABLE

WIRE — RANGE — INSULATION
#16-14 120-180

TOLERANCE EXCEPT AS NOTED
±.015 ±1° 0'

CLASS	—//—
TYPE	—//—
LOC A	A
NO	640007
REV	CI

NAME RING

DIMENSIONS IN INCHES. DO NOT SCALE PRINT.

PRINT DIST 50