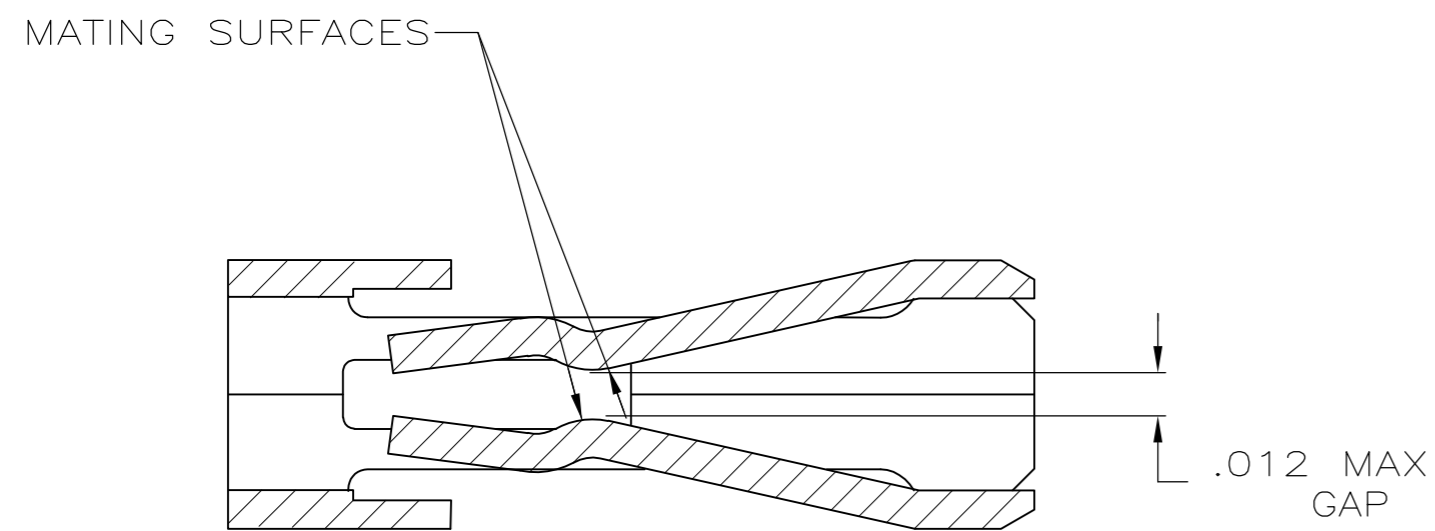
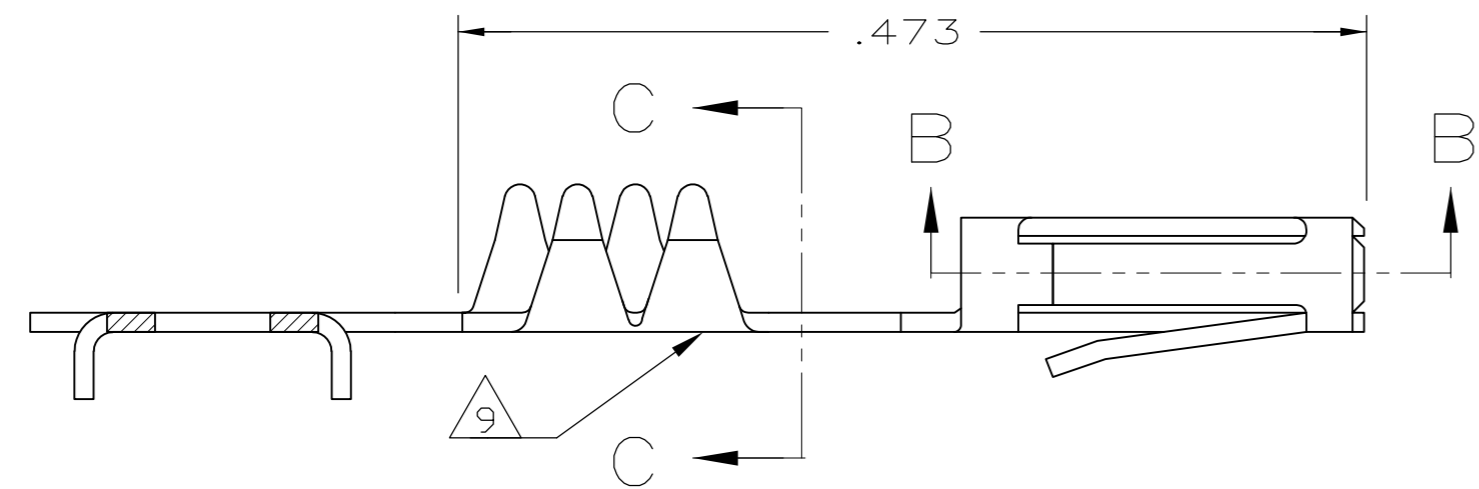
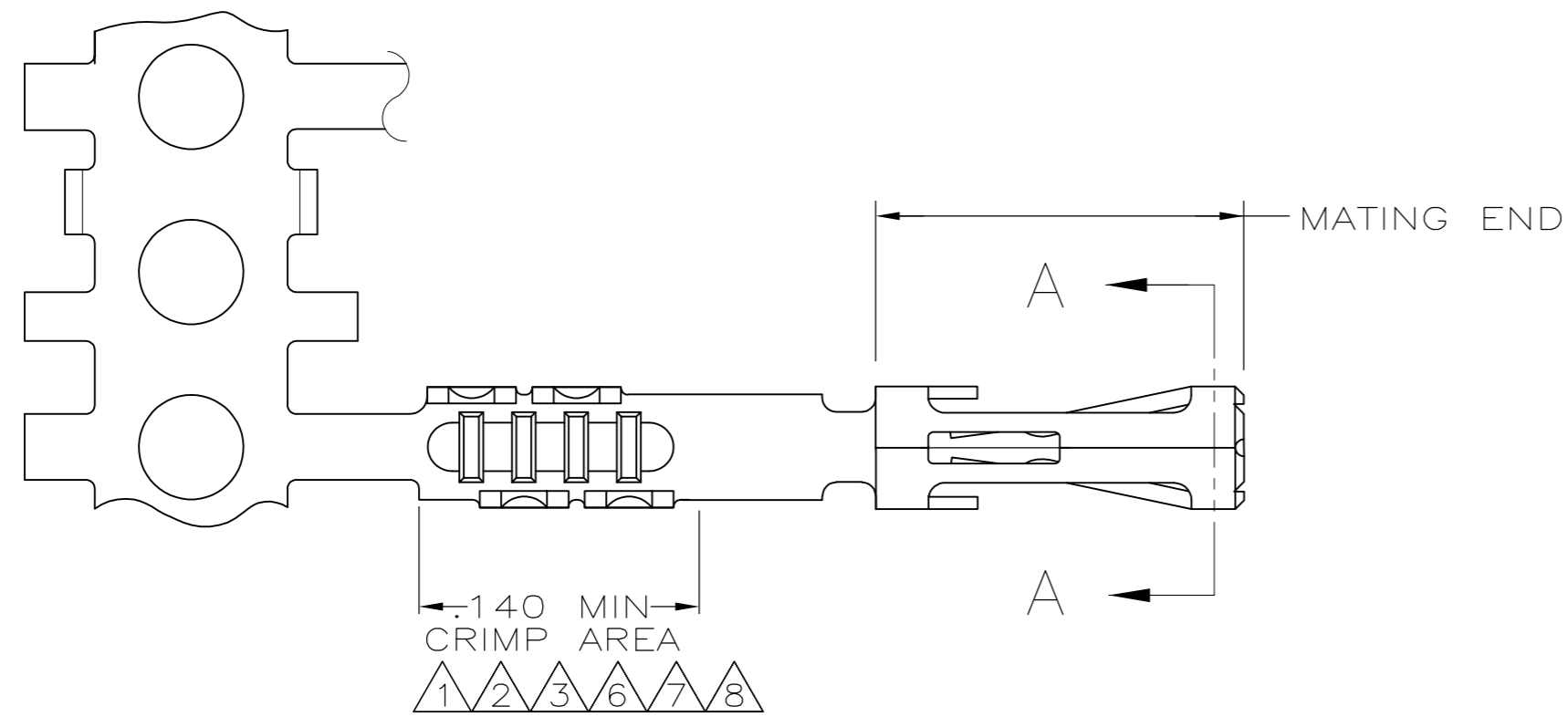
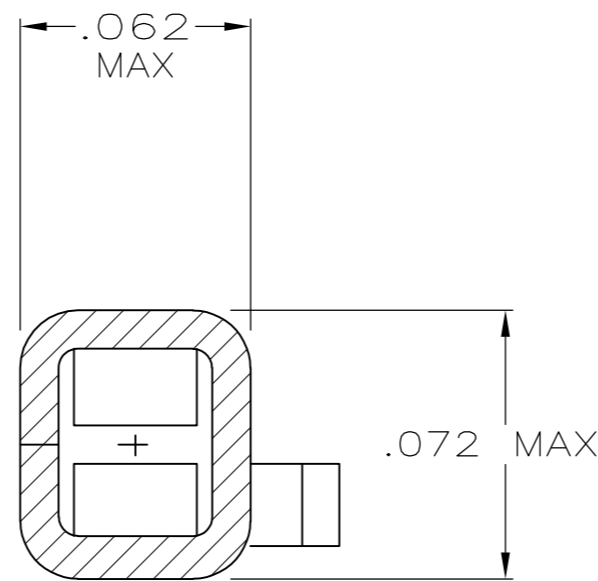


THIS DRAWING IS UNPUBLISHED. RELEASED FOR PUBLICATION
 © COPYRIGHT - By - ALL RIGHTS RESERVED.

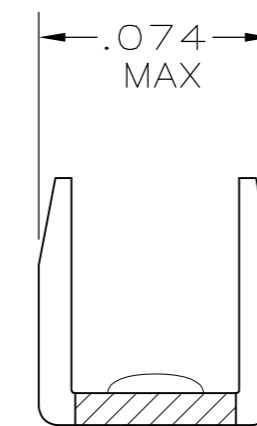
| LOC | | DIST | | REVISIONS | | | |
|-----|-----|-------------|---------------------------|-----------|-----|------|--|
| P | LTR | DESCRIPTION | | DATE | DWN | APVD | |
| GP | 00 | P1 | REVISED PER ECO-11-004835 | 11MAR11 | RK | HMR | |



SECTION B-B
SCALE 20:1



SECTION A-A
SCALE 20:1



SECTION C-C
SCALE 20:1

- 1 PREPLATED .000050 MIN THK NICKEL OVER ENTIRE CONTACT WITH .000015 MIN THK GOLD ON THE MATING SURFACES AND PLATED WITH .000100 MIN THK BRIGHT TIN/LEAD IN CRIMP AREA.
- 2 PREPLATED .000050 MIN THK NICKEL OVER ENTIRE CONTACT WITH .000030 MIN THK GOLD ON THE MATING SURFACES AND PLATED WITH .000100 MIN THK BRIGHT TIN/LEAD IN CRIMP AREA.
- 3 PREPLATED .000050 MIN THK NICKEL OVER ENTIRE CONTACT WITH .000050 MIN THK GOLD ON THE MATING SURFACES AND PLATED WITH .000100 MIN THK BRIGHT TIN/LEAD IN CRIMP AREA.
- 4 .000100 MIN THK BRIGHT TIN/LEAD OVER .000050 MIN THK NICKEL OVER ENTIRE CONTACT.
- 5. MATING POST LENGTH ACCEPTED:
SINGLE ROW HOUSINGS .210-.323
DOUBLE ROW HOUSINGS .225-.323
- 6 GOLD FLASH IN CRIMP AREA, .000100 MIN TIN ON THE MATING END, BOTH OVER .000050 MIN NICKEL.
- 7 PREPLATED .000050 MIN THK NICKEL OVER ENTIRE CONTACT WITH .000015 MIN THK GOLD ON THE MATING SURFACES, AND PLATED WITH GOLD FLASH IN THE CRIMP AREA.
- 8 PREPLATED .000050 MIN THK NICKEL OVER ENTIRE CONTACT WITH .000030 MIN THK GOLD ON THE MATING SURFACES, AND PLATED WITH GOLD FLASH IN THE CRIMP AREA.
- 9 GOLD PLATING MAY OR MAY NOT BE PRESENT ON THE BOTTOM OF THE CRIMP BARREL.

| | |
|--------|------------|
| 9 8 | 1-487117-1 |
| 9 7 | 1-487117-0 |
| 9 6 | 487117-9 |
| 4 | 487117-8 |
| 3 | 487117-6 |
| 2 | 487117-5 |
| 1 | 487117-4 |
| FINISH | PART NO |

| | | | | | |
|--|--|------------------|-------------|---------------|-----------------------------------|
| THIS DRAWING IS A CONTROLLED DOCUMENT. | | DWN | G.A.MACK | 8-30-83 | TE Connectivity |
| DIMENSIONS: INCHES | | CHK | D.DOLLYHIGH | 8-31-83 | |
| TOLERANCES UNLESS OTHERWISE SPECIFIED: | | APVD | - | - | RECEPTACLE CONTACT, HIGH PRESSURE |
| 0 PLC ± - | | PRODUCT SPEC | 108-9024 | - | |
| 1 PLC ± - | | APPLICATION SPEC | 114-16015 | - | SIZE |
| 2 PLC ± - | | MATERIAL | PHOS BRONZE | FINISH | SEE TABLE |
| 3 PLC ± .005 | | WEIGHT | - | SCALE | 10:1 |
| 4 PLC ± - | | CUSTOMER DRAWING | - | SHEET | 1 of 1 |
| ANGLES ± - | | SIZE | A2 | CAGE CODE | 00779 |
| FINISH | | DRAWING NO | C=487117 | RESTRICTED TO | - |
| SEE TABLE | | SCALE | 10:1 | REV | P1 |