

THIS DRAWING IS UNPUBLISHED.

RELEASED FOR PUBLICATION

-,-

LOC

DIST

REVISIONS

© COPYRIGHT - By -

ALL RIGHTS RESERVED.

DF

DO

P

LTR

DESCRIPTION

DATE

DWN

APVD

F1

REVISED PER ECO-11-005030

23MAR11

RK

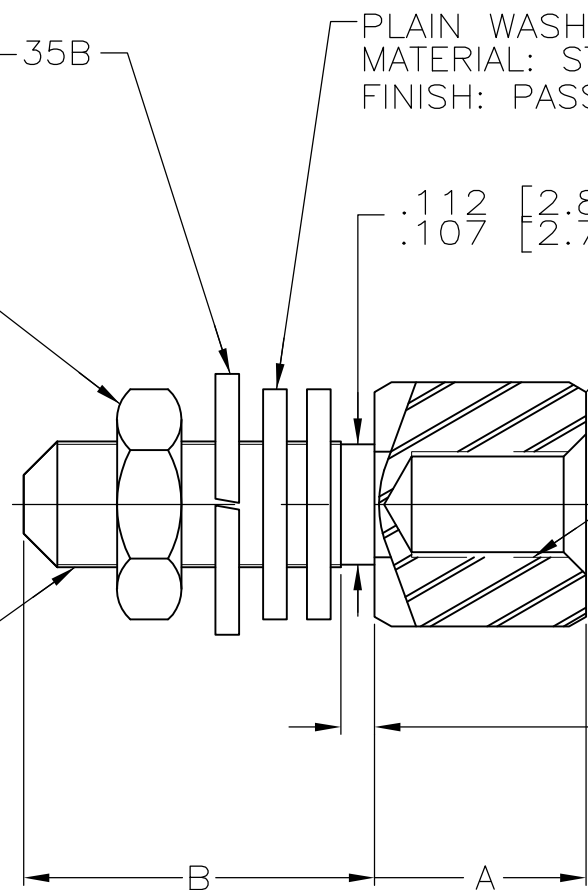
HMR

LOCKWASHER
 MATERIAL: STAINLESS STEEL
 PER QQ-S-766
 FINISH: PASSIVATED PER QQ-P-35B

PLAIN WASHER, #4 (QTY 2)
 MATERIAL: STAINLESS STEEL PER QQ-S-766
 FINISH: PASSIVATED PER QQ-P-35B

HEX NUT
 MATERIAL: STAINLESS STEEL
 PER ASTM-A-582
 FINISH: PASSIVATED PER QQ-P-35B

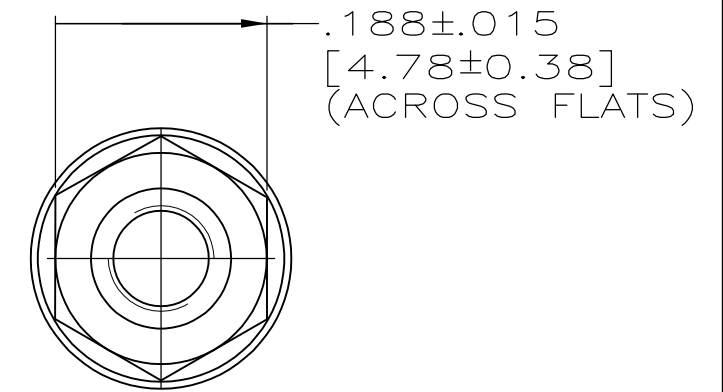
SCREWLOCK, FEMALE
 MATERIAL: STAINLESS STEEL
 PER ASTM-A-582
 FINISH: PASSIVATED PER QQ-P-35B



#4-40 UNC-2A THREADS
 .216 [5.49] MIN. LONG

#4-40 UNC-2B THREADS
 .155 [3.94] DEEP
 .120 [3.05]

.03 [0.76] MIN
 UNTHREADED



1. PACKAGED UNASSEMBLED.
2. EACH KIT HAS TWO COMPLETE ASSEMBLIES AS SHOWN ABOVE.
3. WHEN A CLINCH TAB TYPE CONNECTOR IS FRONT MOUNTED, ONE FLAT WASHER SHALL BE USED AS A SPACER BETWEEN THE MOUNTING SURFACE AND THE CONNECTOR.

.560 [14.22]	.223 [5.66]	-	212447-2
.312 [7.92]	.188 [4.78]	M24308/26-1P	212447-1
B .015 [0.38]	A .015 [0.38]	MILITARY PART NO	PART NO

THIS DRAWING IS A CONTROLLED DOCUMENT.		DWN J.LINDERMAN 1-6-93	STE TE Connectivity	
		CHK F.KINSEY 1-8-93		
DIMENSIONS: INCHES[MM]		APVD F.KINSEY 1-8-93	NAME KIT, SCREWLOCK ASSEMBLY, FEMALE STAINLESS STEEL, AMPLIMITE	
TOLERANCES UNLESS OTHERWISE SPECIFIED:		PRODUCT SPEC	SIZE	
0 PLC ± -		APPLICATION SPEC	CAGE CODE	
1 PLC ± -			DRAWING NO	
2 PLC ± -			RESTRICTED TO	
3 PLC ± -			A300779 C-212447	
4 PLC ± -			SCALE 6:1	
ANGLES ± -		WEIGHT -	SHEET 1 OF 1	
FINISH		CUSTOMER DRAWING		REV F1
SEE CALLOUTS				