

| REVISONS |                           | DATE    | OWN | APPD |
|----------|---------------------------|---------|-----|------|
| AD       | 0                         |         |     |      |
| P        | LTR                       |         |     |      |
| A4       | REVISED PER ECO-11-021641 | 09NOV11 | KH  | PO   |

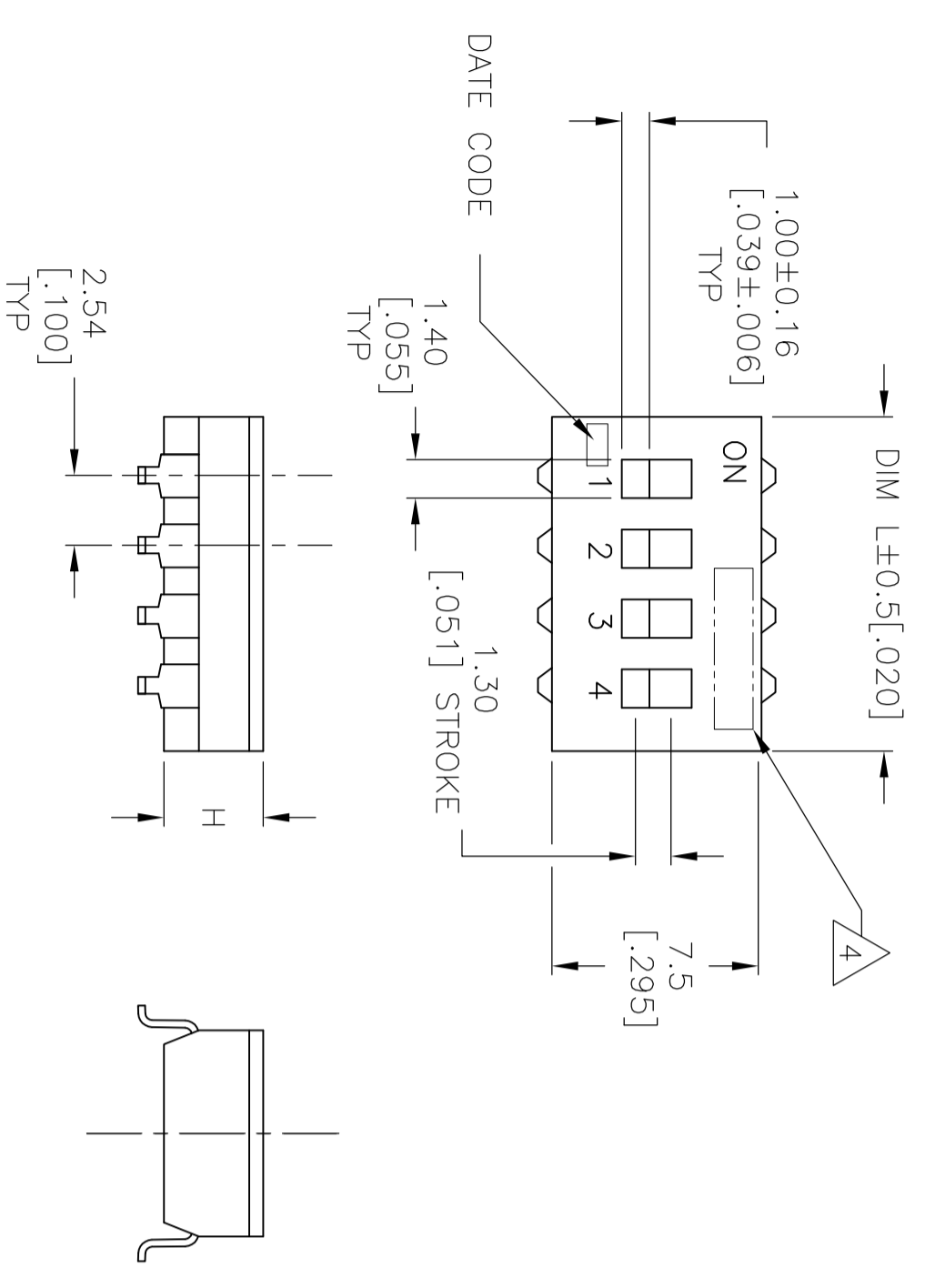
SPECIFICATIONS:

MATERIAL  
 BASE, PPS, UL94V-0, BLACK  
 COVER, PPS, UL94V-0, BLACK  
 ACTUATOR, PA6T, UL94V-0, WHITE  
 FIXED CONTACT/TERMINAL, CU ALLOY-GOLD FLASH OVER NICKEL  
 MOVING CONTACT, CU ALLOY, PLATE-GOLD FLASH/NICKEL  
 TAPE SEAL-POLYIMIDE FILM, AMBER, SEE P/N TABLE FOR OPTIONS

ELECTRICAL  
 MAX CONTACT RATING SWITCHING, 100MILLIAMP @ 24 VDC  
 MIN CONTACT RATING SWITCHING, .1MICROAMP @ 1 MILLIVOLT  
 MAX CONTACT NON-SWITCHING, 1AMP @ 5 VDC  
 INITIAL CONTACT RESISTANCE, 50 MILLIOHMS MAX.  
 CONTACT RESISTANCE (AFTER ENVIRONMENTAL TEST), 100 MILLIOHMS  
 CONTACT RESISTANCE (AFTER GAS TEST), 300 MILLIOHMS  
 INSULATION RESISTANCE, 1,000 MEGOHMS MIN. @ 100 VDC  
 DIELECTRIC STRENGTH, 500 VAC RMS @ SEA LEVEL  
 LIFE EXPECTANCY, 1,000 CYCLES

MECHANICAL  
 OPERATING FORCE, LESS THAN 800 GRAMS  
 CONTACT PRESSURE, 280,000 PSI  
 ENVIRONMENTAL  
 OPERATING TEMPERATURE, -30 TO +85 DEGREES C  
 STORAGE TEMPERATURE, -45 TO +105 DEGREES C  
 CLEANING, AQUEOUS OR SOLVENT  
 SOLDER HEAT RESISTANCE, PER 109-201, COND B, SWITCH "OFF",  
 SOLDERABILITY PER JIS C 0050 & JIS C 0053.

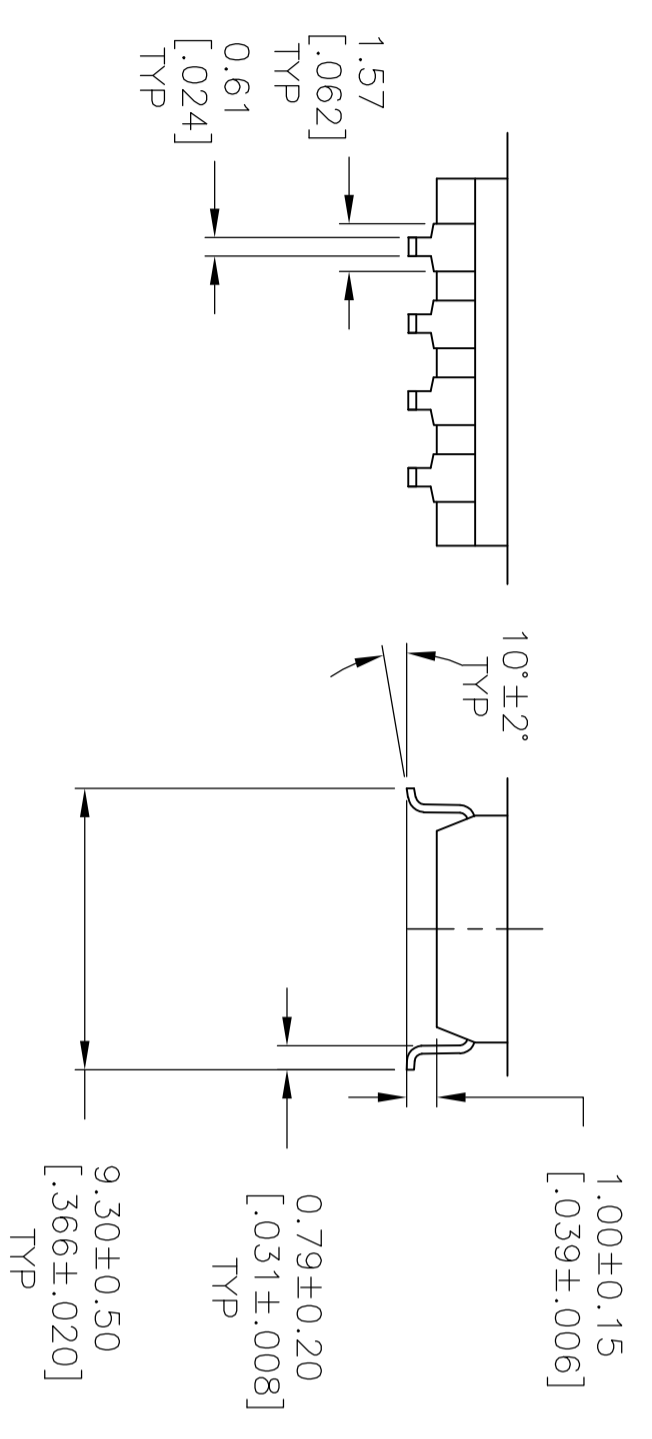
- SWITCHES TO BE RECEIVED IN THE "OFF" POSITION AND PACKAGED IN CLEAR TUBES TO ACCOMMODATE AUTO-INSERTION OR PACKAGED ON TAPE AND REEL
- TOP SURFACE TO BE CLEARLY MARKED AS SHOWN
- SWITCHES TO BE BLACK WITH WHITE ACTUATORS AND MARKINGS.
- TERMINAL OPTION: OLD T&B P/N ADExxS, SA OR SB S= OUTSIDE "L" TERMINALS; SA= INSIDE "L" TERMINALS; SB= BUTT TERMINALS
- ALL MATERIALS AND FINISHES SHALL COMPLY WITH EU DIRECTIVE 2002/95/EC OF 27JAN2003 (ROHS)
- TOP TAPE SEAL AVAILABLE, SEE TABLE FOR OPTIONS.
- TAPE AND REEL PACKAGING PER EIA 481.
- OBsolete PARTS: OBSOLETE CIS STREAMLINING PER D.RENAUD/D.SINISI



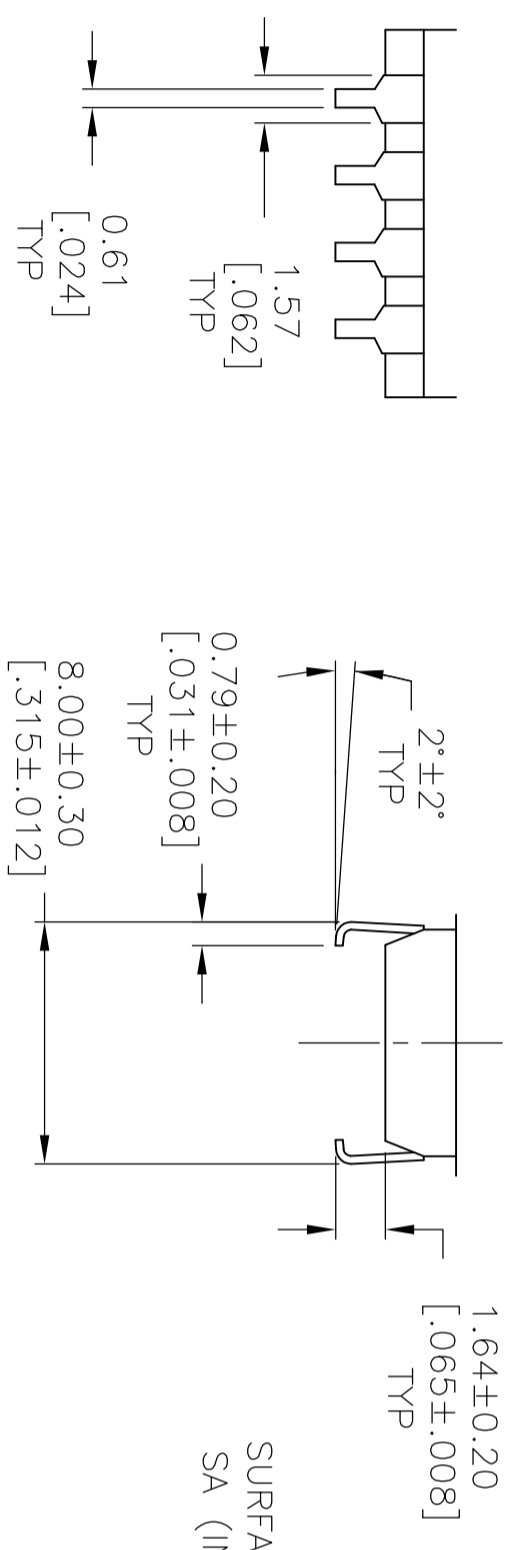
SEE SHEET 3 FOR PART NUMBER TABLE  
 SEE SHEET 2 FOR MOUNTING OPTIONS

|  |  |                    |  |                            |  |
|--|--|--------------------|--|----------------------------|--|
| THIS DRAWING IS A CONTROLLED DOCUMENT. |  | DWG 11FEB05        |  | TE Connectivity            |  |
| DIMENSIONS: mm [INCHES]                |  | CHK B.S.VISWESWARA |  | NAME                       |  |
| TOLERANCES UNLESS OTHERWISE SPECIFIED. |  | M.SARVER           |  | DIP SWITCH, ADF-SMT SERIES |  |
| 0 PLC ±                                |  | APPD M.SARVER      |  | SIZE A2                    |  |
| 1 PLC ±                                |  | PRODUCT SPEC       |  | CASE CODE 1825059          |  |
| 2 PLC ± 0.30(0.12)                     |  | APPLICATION SPEC   |  | DRAWING NO 1825059         |  |
| 3 PLC ±                                |  | WEIGHT             |  | SCALE 4:1                  |  |
| 4 PLC ±                                |  | CUSTOMER DRAWING   |  | SHEET 1 of 3               |  |
| ANGLES ±                               |  |                    |  | REV A4                     |  |
| FINISH                                 |  |                    |  |                            |  |
| MATERIAL                               |  |                    |  |                            |  |

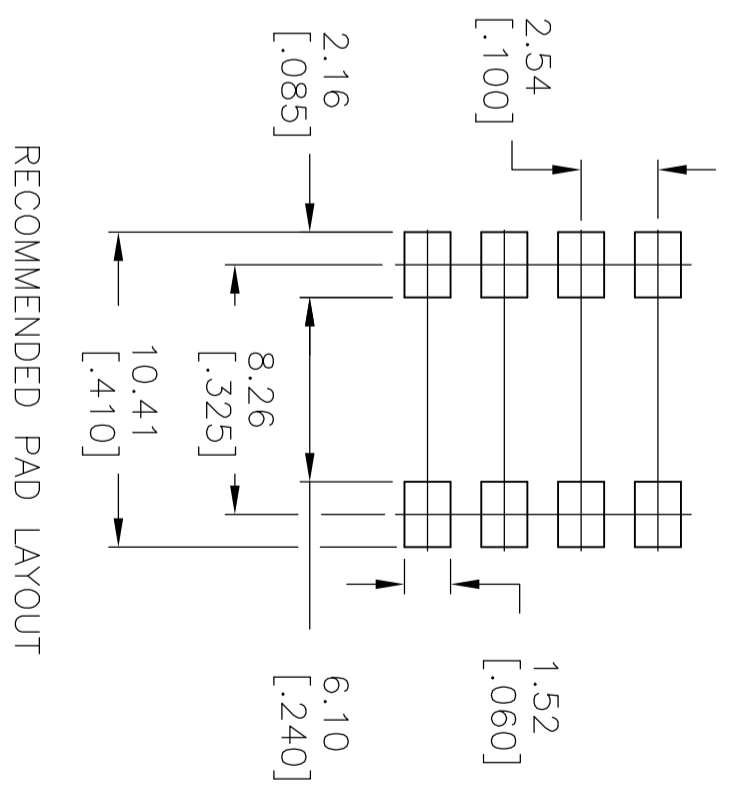
| LOC | DIST | REV | DESCRIPTION | DATE | DMN | APPD |
|-----|------|-----|-------------|------|-----|------|
| AD  | 0    | P   | LTR         |      |     |      |
|     |      |     | SEE SHEET 1 |      |     |      |



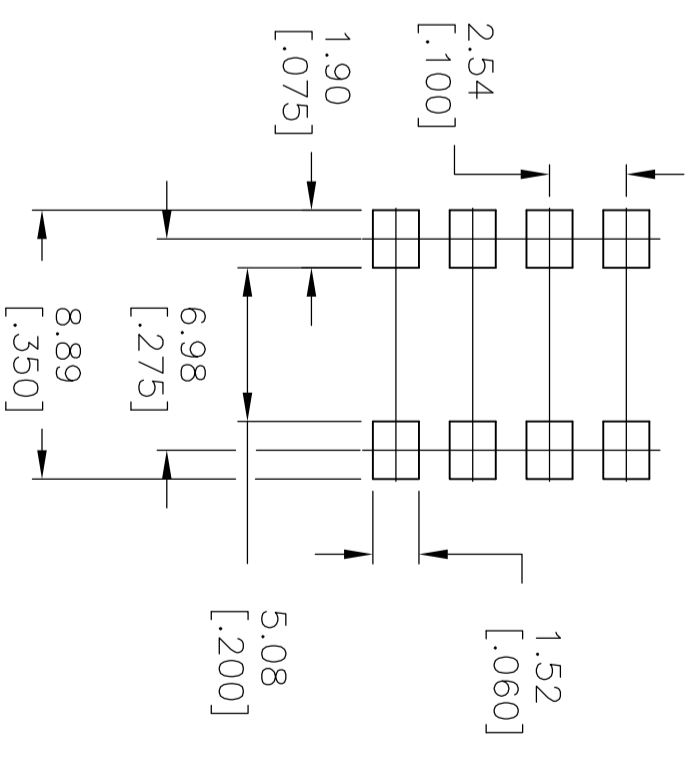
SURFACE MOUNT  
S (OUTSIDE "L")



SURFACE MOUNT  
SA (INSIDE "L")



RECOMMENDED PAD LAYOUT



RECOMMENDED PAD LAYOUT

|  |          |  |                |                  |                            |           |
|--|----------|--|----------------|------------------|----------------------------|-----------|
| THIS DRAWING IS A CONTROLLED DOCUMENT. |          | DMN                                    | B.S.VISWESWARA | 11FEB05          | TE Connectivity            |           |
| CHK                                    | M.SARVER | APPD                                   | M.SARVER       |                  | DIP SWITCH, ADF-SMT SERIES |           |
| DIMENSIONS: mm [INCHES]                |          | TOLERANCES UNLESS OTHERWISE SPECIFIED: |                | NAME             | SIZE                       | CAGE CODE |
| 0                                      | PLC      | ±                                      | -              |                  | A2                         | -         |
| 1                                      | PLC      | ±                                      | 0.30(.012)     | APPLICATION SPEC |                            |           |
| 2                                      | PLC      | ±                                      | -              | WEIGHT           |                            |           |
| 3                                      | PLC      | ±                                      | -              | CUSTOMER DRAWING |                            |           |
| 4                                      | PLC      | ±                                      | -              |                  |                            |           |
| MATERIAL                               |          | FINISH                                 |                |                  | SCALE                      | 4:1       |
|  |          |  |                |                  | SHEET                      | 2 of 3    |
|  |          |  |                |                  | REV                        | A4        |

