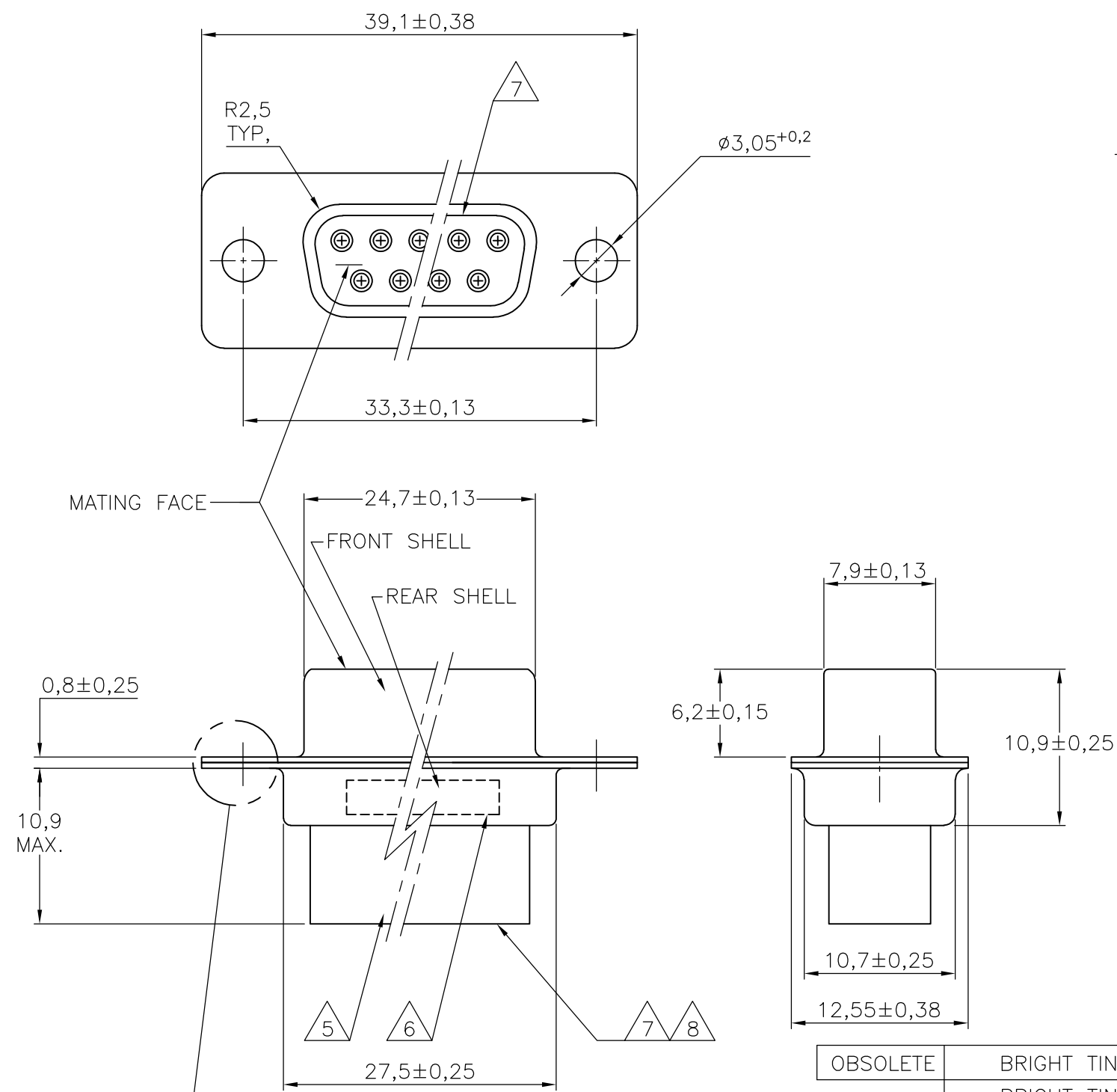


THIS DRAWING IS UNPUBLISHED. RELEASED FOR PUBLICATION  
 © COPYRIGHT BY TYCO ELECTRONICS CORPORATION. ALL RIGHTS RESERVED.

LOC	DIST	REVISIONS					
		P	LTR	DESCRIPTION	DATE	DWN	APVD
H	—		M	ECR-07-008767	16-07-07	BSV	KMA
			P	ECR-09-004273	02-03-09	AEG	KMA
			P1	ECR-10-020025	13JAN11	RK	KMA



NOTES:

- 1 THIS RECEPTACLE ACCEPTS SIZE 20 REC. CONTACTS.
  - 2 MAXIMUM WIRE INSULATION RECOMMENDED FOR USE WITH THIS RECEPTACLE IS 1,73 DIA. MAX..
  - 3 RETENTION TINES ARE AN INTEGRAL PART OF INSERT.
  - 4 FOLLOWING INSERTION/REMOVAL TOOLS ARE RECOMMENDED FOR USE WITH THESE CONNECTORS:  
 32-28AWG/28-24AWG CONTACTS  
 91067-3 INSERTION/REMOVAL  
 726363-1 INSERTION ONLY  
 24-20AWG CONTACTS  
 726363-1 INSERTION ONLY  
 726364-1 REMOVAL ONLY
- 5 INSERTS: GLASSFILLED SELF-EXTINGUISHING PBT, COLOR BLACK.  
 6 TE, PARTNUMBER AND DATE CODE; INK STAMPED.  
 7 RAISED CAVITY IDENTIFICATION 0,8 HIGH.  
 8 RAISED CAVITY IDENTIFICATION NUMBERS ON WIRE SIDE ARE WHITENED FOR 164532-9.

OBSOLETE	BRIGHT TIN	BRIGHT TIN	STEEL	164532-9	8
	BRIGHT TIN	BRIGHT TIN	STEEL	164532-4	
	PLATING FRONT SHELL	PLATING REAR SHELL	MATERIAL SHELLS	PARTNUMBER	

THIS DRAWING IS A CONTROLLED DOCUMENT.		DWN D.KESSLER	11FEB99	Tyco Electronics Corporation 's-Hertogenbosch, Nederland	
DIMENSIONS: mm		CHK W.SOOMERS	APVD W.SOOMERS	NAME 15 POS HDP-20 RECEPTACLE CONNECTOR SIZE 2	
TOLERANCES UNLESS OTHERWISE SPECIFIED: 0 PLC ± - 1 PLC ± 0,2 2 PLC ± - 3 PLC ± - 4 PLC ± - ANGLES ± 2'		PRODUCT SPEC APPLICATION SPEC		SIZE A3	CAGE CODE -
MATERIAL -		FINISH -		DRAWING NO G- 164532	RESTRICTED TO -
CUSTOMER DRAWING			SCALE NTS	SHEET 1 OF 1	REV P1