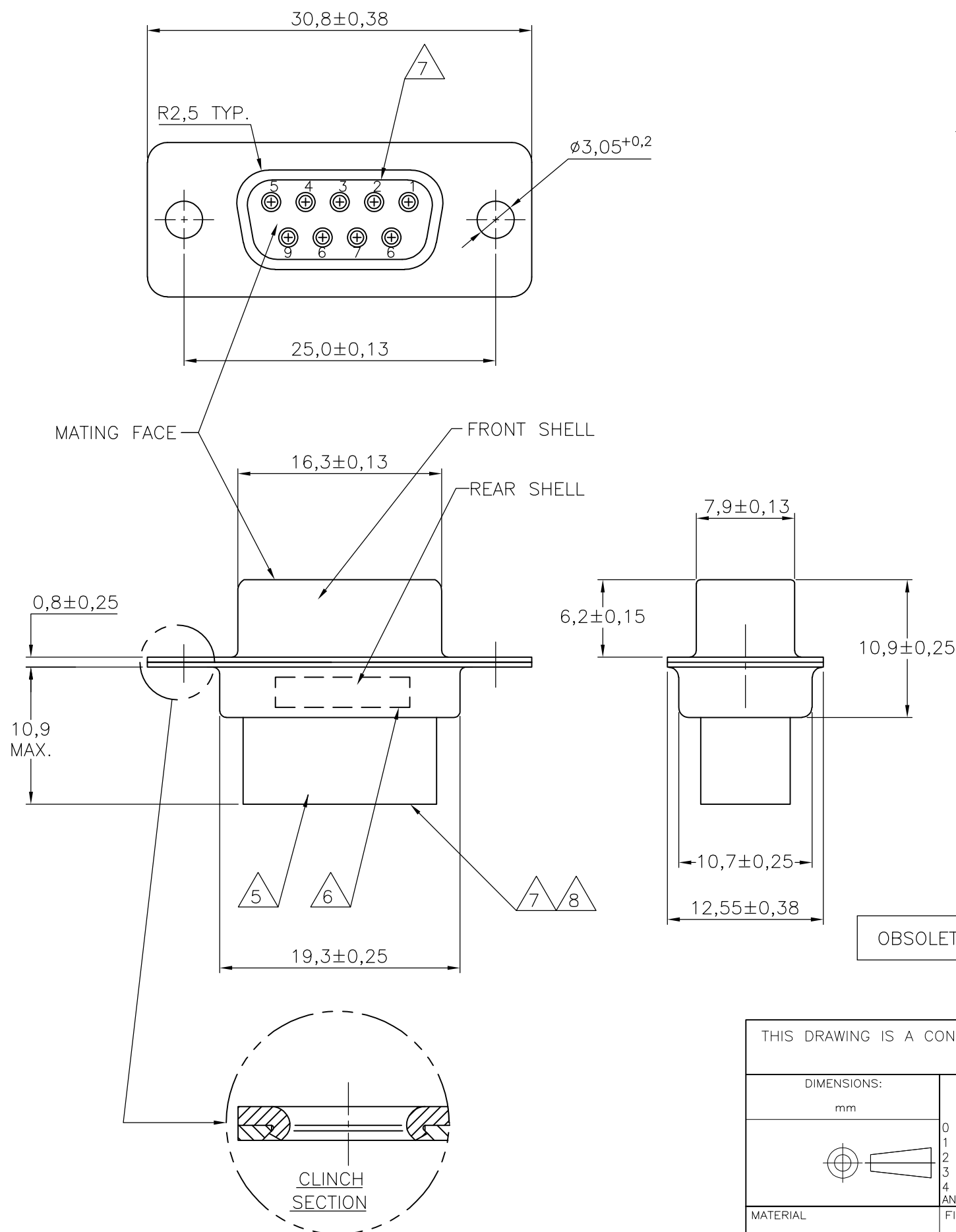


THIS DRAWING IS UNPUBLISHED. RELEASED FOR PUBLICATION
 © COPYRIGHT - By - ALL RIGHTS RESERVED.

LOC	DIST	REVISIONS			
P	LTR	DESCRIPTION	DATE	DWN	APVD
H	-	M2	REVISED PER ECO-11-005294	02APR11	RK HMR



NOTES:

- THIS RECEPTACLE ACCEPTS SIZE 20 REC. CONTACTS.
 - MAXIMUM WIRE INSULATION RECOMMENDED FOR USE WITH THIS RECEPTACLE IS 1,73 DIA. MAX..
 - RETENTION TINES ARE AN INTEGRAL PART OF INSERT.
 - FOLLOWING INSERTION/REMOVAL TOOLS ARE RECOMMENDED FOR USE WITH THESE CONNECTORS:
 32-28AWG/28-24AWG CONTACTS
 91067-3 INSERTION/REMOVAL
 726363-1 INSERTION ONLY
 24-20AWG CONTACTS
 726363-1 INSERTION ONLY
 726364-1 REMOVAL ONLY
- 5 INSERTS: GLASSFILLED SELF-EXTINGUISHING PBT, COLOR BLACK.
 6 TE, TE CONNECTIVITY PARTNUMBER AND DATE CODE; INK STAMPED.
 7 RAISED CAVITY IDENTIFICATION 0,8 HIGH.
 8 RAISED CAVITY IDENTIFICATION NUMBERS ON WIRE SIDE ARE WHITENED FOR 164531-9.

OBSOLETE	BRIGHT TIN	BRIGHT TIN	STEEL	164531-9	8
	BRIGHT TIN	BRIGHT TIN	STEEL	164531-4	
	PLATING FRONT SHELL	PLATING REAR SHELL	MATERIAL SHELLS	PART NUMBER	

THIS DRAWING IS A CONTROLLED DOCUMENT.		DWN	11FEB99		TE Connectivity 9 POS HDP-20 RECEPTACLE CONNECTOR SIZE 1	
DIMENSIONS: mm		CHK	-			
TOLERANCES UNLESS OTHERWISE SPECIFIED:		APVD	-			
0 PLC ± - 1 PLC ± 0,2 2 PLC ± - 3 PLC ± - 4 PLC ± - ANGLES ± 2°		PRODUCT SPEC	-			
MATERIAL		FINISH	-		APPLICATION SPEC - WEIGHT -	
CUSTOMER DRAWING			SIZE	CAGE CODE	DRAWING NO	RESTRICTED TO
			A3	-	C-164531	-
			SCALE	SHEET	REV	
			NTS	1 OF 1	M2	