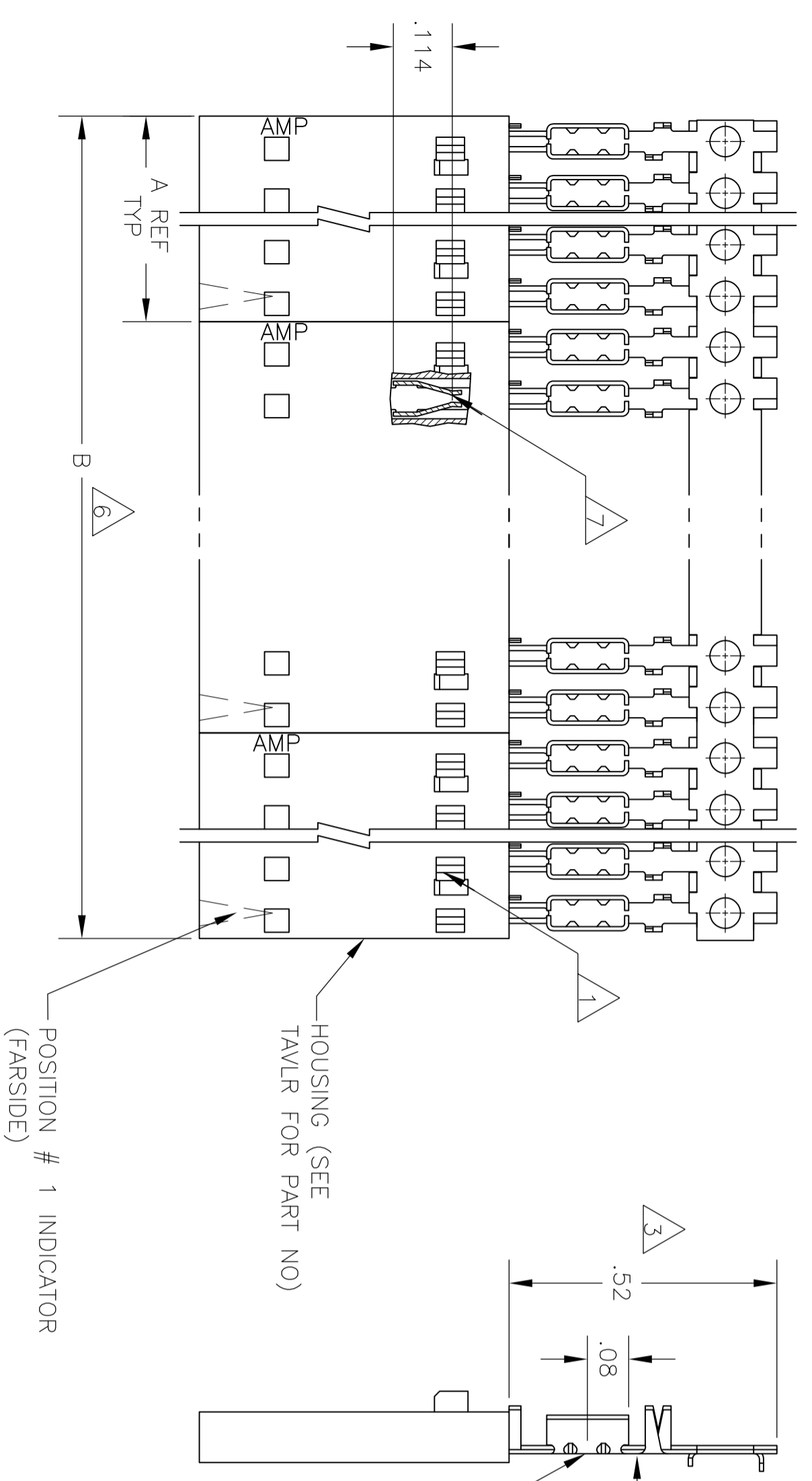
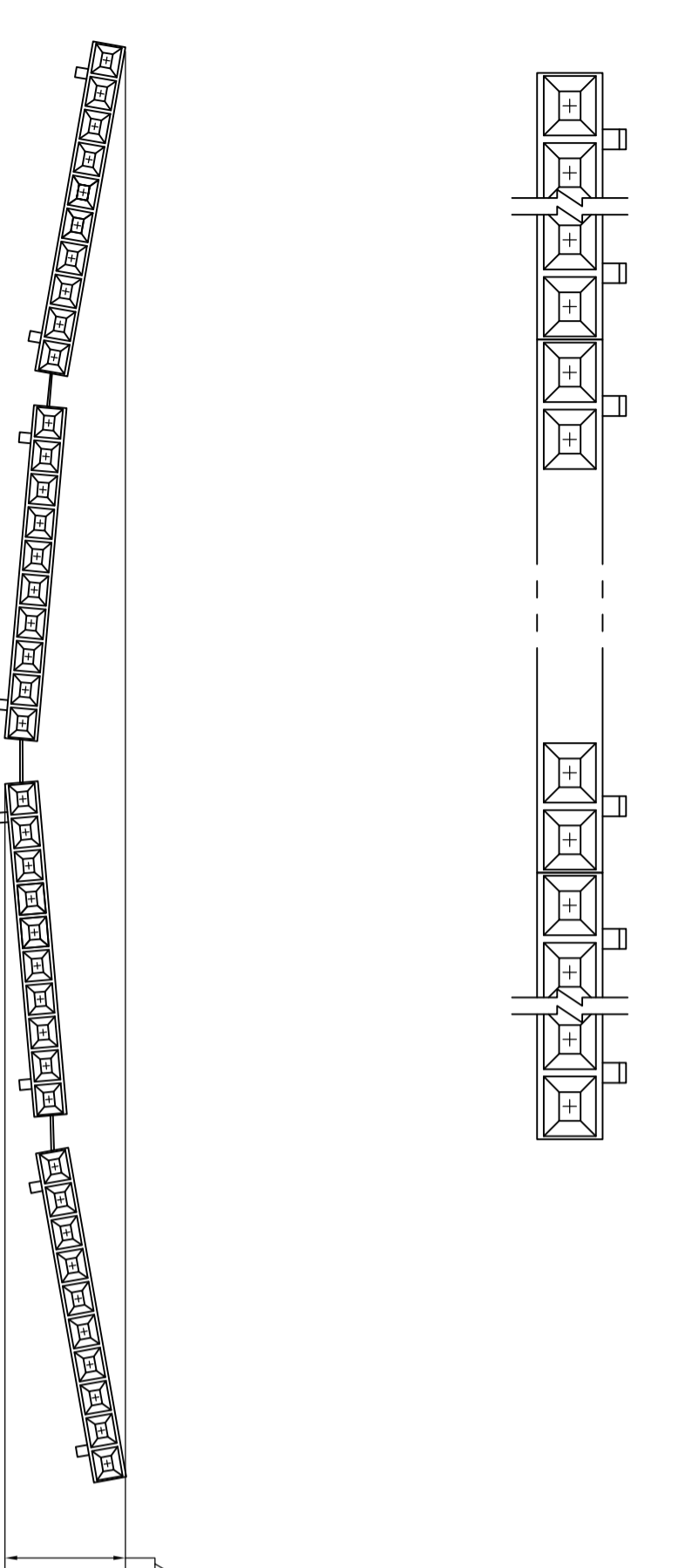


REVOLUTIONS		DATE	BY	APP'D
AD	00	01 FEB 95	BSV	JLJ
P	J	EC 063C 0759 04		
	J1	REVISED PER ECO-09-020689	02SEP09	KK
				AEG



- 1 CONTACTS ARE LATCHED INTO THE PRELOAD WINDOWS
- 2 USE WITH #26-#30 AWG WIRE SIZE, .054/.030 INSULATION DIAMETER, .015 MAXIMUM INSULATION THICKNESS
- 3 THE DIMENSION APPLIES WITH THE FORWARD PRELOAD STOP IN CONTACT WITH THE HOUSING SURFACE
- 4 POINT OF MEASUREMENT FOR PLATING THICKNESS
- 5 FOR INDIVIDUAL ASSEMBLIES SEE PART NUMBER 103649
- 6 ASSEMBLIES ARE JOINED BY THE CARRIER STRIP. ORDER QUANTITY REFLECTS TOTAL NUMBER OF INDIVIDUAL ASSEMBLIES REQUIRED. SEE TABLE FOR NUMBER OF ASSEMBLIES PER STRIP.
- 7 POINT OF MEASUREMENT FOR PLATING THICKNESS (INSIDE BEAMS)
- 8 MAXIMUM ALLOWABLE BOW OF ASSEMBLY NOT TO EXCEED .055.
- 9 CONTACTS: .000015 GOLD IN THE CONTACT AREA, .000050-.000100 BRIGHT TIN-LEAD ON THE TERMINATION AREA, ALL OVER .000050 NICKEL
- 10 CONTACTS: .000015 GOLD IN THE CONTACT AREA, .000050-.000100 MATTE TIN ON THE TERMINATION AREA, ALL OVER .000050 NICKEL
- 11 OBSOLETE PARTS: OBSOLETE CIS STREAMLINING PER D.RENAUD/D.SINISI



EXAMPLE: STRIP ASSEMBLY
SCALE 2:1

11	OBSOLETE	10	2.40	1.198	1-103648-1	12	6-103972-1
11	OBSOLETE	10	2.20	1.098	1-103648-0	11	6-103972-0
11	OBSOLETE	10	2.00	.998	103648-9	10	5-103972-9
11	OBSOLETE	10	1.80	.898	103648-8	9	5-103972-8
11	OBSOLETE	10	1.60	.798	103648-7	8	5-103972-7
11	OBSOLETE	10	1.40	.698	103648-6	7	5-103972-6
11	OBSOLETE	10	2.39	.598	103648-5	6	5-103972-5
11	OBSOLETE	10	1.99	.498	103648-4	5	5-103972-4
11	OBSOLETE	10	2.40	.298	103648-2	3	5-103972-2
11	OBSOLETE	10	2.00	.198	103648-1	2	5-103972-1
11	OBSOLETE	9	2.40	1.198	1-103648-1	12	1-103972-1
11	OBSOLETE	9	2.20	1.098	1-103648-0	11	1-103972-0
11	OBSOLETE	9	2.00	.998	103648-9	10	103972-9
11	OBSOLETE	9	1.80	.898	103648-8	9	103972-8
11	OBSOLETE	9	1.60	.798	103648-7	8	103972-7
11	OBSOLETE	9	1.40	.698	103648-6	7	103972-6
11	OBSOLETE	9	2.39	.598	103648-5	6	103972-5
11	OBSOLETE	9	1.99	.498	103648-4	5	103972-4
11	OBSOLETE	9	2.40	.298	103648-2	3	103972-2
11	OBSOLETE	9	2.00	.198	103648-1	2	103972-1
	PLATING	6	B	A	HOUSING PART NUMBER	NO OF POSN	ASSEMBLY PART NUMBER ON STRIP

THIS DRAWING IS A CONTROLLED DOCUMENT.		DWG L. MAYER	05 NOV 1986	Tyco Electronics Corporation Harrisburg, Pa 17105-3608	
DIMENSIONS: INCHES		CHK P.C. DEJONG	12-11-86	Tyco Electronics	
TOLERANCES UNLESS OTHERWISE SPECIFIED:		APP'D	13-11-86	RCPT ASSY, AMPMODU MTE, SINGLE ROW, .100 CL, WITH GUIDE RIBS, FOR #26-#30 AWG WIRE SIZE, STRIP FORM	
0 P.L.C.	±	PRODUCT SPEC			
1 P.L.C.	± .02	108-25034			
2 P.L.C.	± .005	APPLICATION SPEC			
3 P.L.C.	±	114-25026			
4 P.L.C.	±	WEIGHT			
FINISH		A2 00779 103972			
SEE TABLE		CUSTOMER DRAWING			
HOLDING: TYPICAL PLATING: PHOS BRONZE		SCALE 4:1 SHEET 1 OF 1 REV J1			