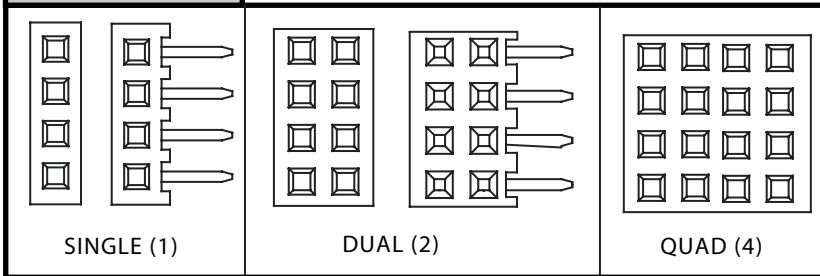


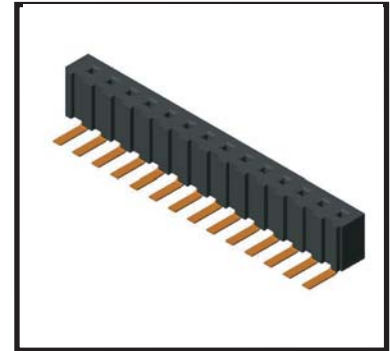
.079" [2 mm] Contact Centers, Female Header

READOUT



FEATURES

- * 1 amp current rating
- * UL Flammability Rating: 94V-0
- * Insulator: Black Thermoplastic Polyester/Nylon 6-T
- * Contact Material: Phosphor Bronze

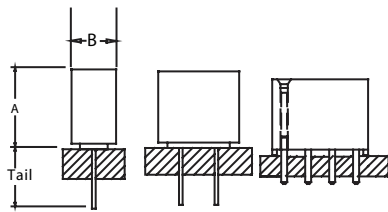


TERMINATION TYPE

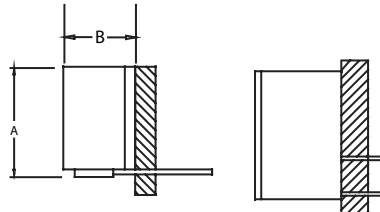
P/N CODE	ROWS	TERM	A	B	TAIL
BFC	1	STRAIGHT	0.177 [4.50]	0.094 [2.40]	0.094 [2.40]
AFC	2	STRAIGHT	0.157 [4.00]	0.157 [4.00]	0.094 [2.40]
EFC	4	STRAIGHT	0.248 [6.30]	0.315 [8.00]	.128 [3.25]

P/N CODE	ROWS	TERM	A	B	TAIL
FGG	1	RIGHT ANGLE	.169 [4.30]	.110 [2.80]	.122 [3.10]
FJF	2	RIGHT ANGLE	.285 [7.20]	.191 [4.85]	.118 [3.00]

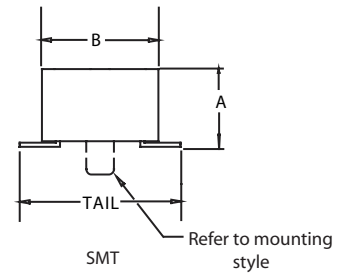
P/N CODE	ROWS	TERM	ENTRY	A	B	TAIL
BFL	1	SMT	TOP ENTRY	.169 [4.30]	.080 [2.00]	.140 [3.55]
GFN	2	SMT	TOP ENTRY	.110 [2.80]	.165 [4.20]	.230 [5.84]
GHN	2	SMT	BOTTOM ENTRY	.110 [2.80]	.165 [4.20]	.230 [5.84]
FFK	2	SMT	TOP ENTRY	.169 [4.30]	.161 [4.10]	.231 [5.86]



STRAIGHT



RIGHT ANGLE



SMT Refer to mounting style

Mounting Style

<p>No Mounting- Default Standard (N)</p>	<p>One Row SMT, Pin1 Left (C)</p>	<p>One Row SMT, Pin1 Right (D)</p>	<p>Two Row SMT, Without guide post(S)</p>	<p>Two Row SMT, with guide post (P)</p>

.079" [2 mm] Contact Center Female Header

PART NUMBER CODING *

PLASTIC HOUSING/CONTACT MATERIAL
 PP = Thermoplastic/Phosphor Bronze (Plated Tru Hole Only)
 NP = Nylon 6-T/Phosphor Bronze (SMT Only)

CONTACT FINISH
 Contact Termination
 P = Gold Flash Gold Flash (For 1 and 2 row)
 R = 0.000020 GOLD 0.00010 TIN (For 4 row)

CONTACT CENTERS
 N = .079" [2.00mm]

NUMBER OF POSITIONS
 01 Thru 40
 (eg. 40 Dual = 80 Contacts)

RoHS Compliant
 Add -RC For RoHS Compliant
 Consult Factory For Modifications

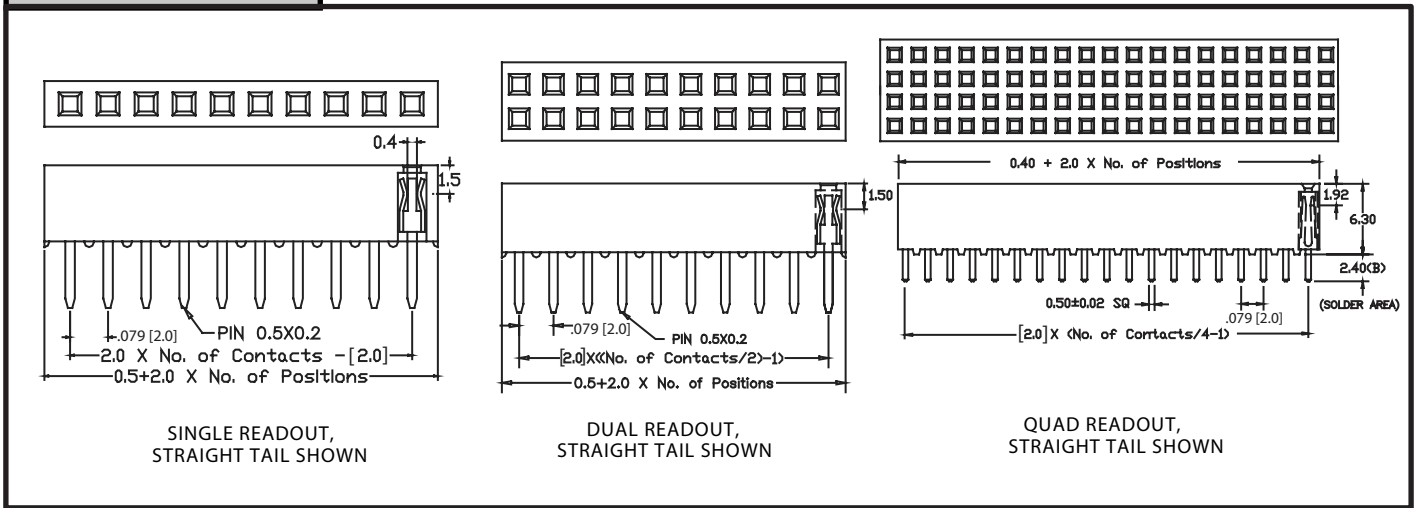
MOUNTING STYLE
 N = No Mounting
 C = SMT, Single row female, pin1 Left
 D = SMT, Single row female, pin1 Right
 P = Surface mount with guide pins
 S = Surface mount without guide pins

TERMINATION TYPE (Opposite Page)
 BFC, AFC, EFC, FGG, FJF, BFL, GFN
 GHN and FFK

READOUT (Opposite Page)
 1 = Single
 2 = Dual
 4 = Four row

DIMENSIONS

Dimensions in [] are in millimeters, all others in inches.



PART NUMBER*	NUMBER OF CONTACTS SINGLE/DUAL/QUAD	OVERALL LENGTH [A]
PPPN01 __ N	1/2	0.079[2.00]
PPPN02 __ N	2/4	0.157[4.00]
PPPN03 __ N	3/6	0.236[6.00]
PPPN04 __ N	4/8	0.314[8.00]
PPPN05 __ N	5/10	0.393[10.00]
PPPN06 __ N	6/12/24	0.472[12.00]
PPPN07 __ N	7/14	0.551[14.00]
PPPN08 __ N	8/16	0.629[16.00]
PPPN09 __ N	9/18	0.708[18.00]
PPPN10 __ N	10/20/40	0.787[20.00]
PPPN11 __ N	11/22	0.866[22.00]
PPPN12 __ N	12/24/44	0.944[24.00]
PPPN13 __ N	13/26	1.023[26.00]
PPPN14 __ N	14/28	1.102[28.00]
PPPN15 __ N	15/30/60	1.181[30.00]
PPPN16 __ N	16/32	1.259[32.00]
PPPN17 __ N	17/34	1.338[34.00]
PPPN18 __ N	18/36	1.417[36.00]
PPPN19 __ N	19/38	1.496[38.00]
PPPN20 __ N	20/40	1.574[40.00]

PART NUMBER*	NUMBER OF CONTACTS SINGLE/DUAL/QUAD	OVERALL LENGTH [A]
PPPN21 __ N	21/42/84	1.653[42.00]
PPPN22 __ N	22/44	1.732[44.00]
PPPN23 __ N	23/46	1.811[46.00]
PPPN24 __ N	24/48/96	1.889[48.00]
PPPN25 __ N	25/50	1.968[50.00]
PPPN26 __ N	26/52	2.047[52.00]
PPPN27 __ N	27/54	2.125[54.00]
PPPN28 __ N	28/56	2.204[56.00]
PPPN29 __ N	29/58	2.283[58.00]
PPPN30 __ N	30/60/120	2.362[60.00]
PPPN31 __ N	31/62	2.440[62.00]
PPPN32 __ N	32/64	2.519[64.00]
PPPN33 __ N	33/66	2.598[66.00]
PPPN34 __ N	34/68	2.677[68.00]
PPPN35 __ N	35/70	2.755[70.00]
PPPN36 __ N	36/72	2.834[72.00]
PPPN37 __ N	37/74	2.913[74.00]
PPPN38 __ N	38/76	2.992[76.00]
PPPN39 __ N	39/78	3.070[78.00]
PPPN40 __ N	40/80	3.149[80.00]

* For complete part number add readout and termination type from Part Number Coding (e.g. PPPN401BFCN).