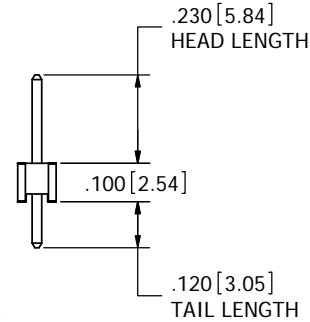
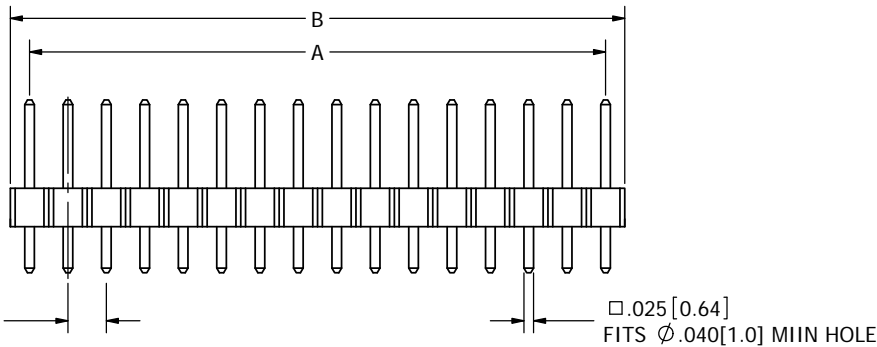
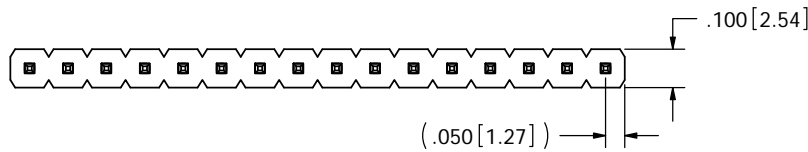


PART NUMBER CODING

PRPC__SAAN-T1RC

NUMBER OF POSITIONS PER ROW
(001 THRU 040)

LEAD FREE



REVISIONS				
REV.	ECO. NO	DESCRIPTION	DATE	BY
A	1788	INITIAL RELEASE	08/15/08	ASK

PART NUMBER	A		B	
	INCH	MM	INCH	MM
	±.008	± 0.20	± .020	± 0.51
PRPC002SAAN-T1RC	0.100	2.54	0.200	5.08
PRPC003SAAN-T1RC	0.200	5.08	0.300	7.62
PRPC004SAAN-T1RC	0.300	7.62	0.400	10.16
PRPC005SAAN-T1RC	0.400	10.16	0.500	12.70
PRPC006SAAN-T1RC	0.500	12.70	0.600	15.24
PRPC007SAAN-T1RC	0.600	15.24	0.700	17.78
PRPC008SAAN-T1RC	0.700	17.78	0.800	20.32
PRPC009SAAN-T1RC	0.800	20.32	0.900	22.86
PRPC010SAAN-T1RC	0.900	22.86	1.000	25.40
PRPC011SAAN-T1RC	1.000	25.40	1.100	27.94
PRPC012SAAN-T1RC	1.100	27.94	1.200	30.48
PRPC013SAAN-T1RC	1.200	30.48	1.300	33.02
PRPC014SAAN-T1RC	1.300	33.02	1.400	35.56
PRPC015SAAN-T1RC	1.400	35.56	1.500	38.10
PRPC016SAAN-T1RC	1.500	38.10	1.600	40.64
PRPC017SAAN-T1RC	1.600	40.64	1.700	43.18
PRPC018SAAN-T1RC	1.700	43.18	1.800	45.72
PRPC019SAAN-T1RC	1.800	45.72	1.900	48.26
PRPC020SAAN-T1RC	1.900	48.26	2.000	50.80
PRPC021SAAN-T1RC	2.000	50.80	2.100	53.34
PRPC022SAAN-T1RC	2.100	53.34	2.200	55.88
PRPC023SAAN-T1RC	2.200	55.88	2.300	58.42
PRPC024SAAN-T1RC	2.300	58.42	2.400	60.96
PRPC025SAAN-T1RC	2.400	60.96	2.500	63.50
PRPC026SAAN-T1RC	2.500	63.50	2.600	66.04
PRPC027SAAN-T1RC	2.600	66.04	2.700	68.58
PRPC028SAAN-T1RC	2.700	68.58	2.800	71.12
PRPC029SAAN-T1RC	2.800	71.12	2.900	73.66
PRPC030SAAN-T1RC	2.900	73.66	3.000	76.20
PRPC031SAAN-T1RC	3.000	76.20	3.100	78.74
PRPC032SAAN-T1RC	3.100	78.74	3.200	81.28
PRPC033SAAN-T1RC	3.200	81.28	3.300	83.82
PRPC034SAAN-T1RC	3.300	83.82	3.400	86.36
PRPC035SAAN-T1RC	3.400	86.36	3.500	88.90
PRPC036SAAN-T1RC	3.500	88.90	3.600	91.44
PRPC037SAAN-T1RC	3.600	91.44	3.700	93.98
PRPC038SAAN-T1RC	3.700	93.98	3.800	96.52
PRPC039SAAN-T1RC	3.800	96.52	3.900	99.06
PRPC040SAAN-T1RC	3.900	99.06	4.000	101.60

NOTES:

1. INSULATOR MATERIAL: BLACK, THERMOPLASTIC
2. CONTACT MATERIAL: BRASS
3. PLATING: GOLD FLASH OVERALL
4. TEMPERATURE: -65°C TO +105°C
5. PROCESSING TEMP: 260°C FOR 10 SECONDS MAX
6. UL FLAMMABILITY RATING: 94V-0
7. VOLTAGE RATING: 500 VAC MINIMUM AT SEA LEVEL.
8. CURRENT RATING: 3 AMP PER CONTACT PAIR
9. VOLTAGE DROP: 30 MILLI VOLT AT RATED CURRENT
10. INSULATION RESISTANCE: 5000 MEGA OHM



RoHS COMPLIANT

UNLESS OTHERWISE SPECIFIED:

DIMENSIONS ARE IN INCHES[MM]
TOLERANCES:
ANGULAR: ± 30°
XX ± .02 [508]
XXX ± .005 [1270]
XXXX ± .0005 [0127]
SURFACE FINISH: 63 Ra
REMOVE ALL BURRS AND SHARP EDGES .010 MAX

INTERPRET DIMENSIONS AND GEOMETRIC TOLERANCING PER: ANSI Y14.5M-1994

DRAWN	DATE	NAME
	08/15/08	ASK
THE INFORMATION HEREIN CONTAINS PROPRIETARY INFORMATION OF SULLINS ELECTRONICS AND IS NOT TO BE REPRODUCED, USED OR DISCLOSED TO OTHERS FOR ANY PURPOSE EXCEPT AS SPECIFICALLY AUTHORIZED IN WRITING BY AN OFFICER OF SULLINS ELECTRONICS.		
SIZE DWG. NO.		
C	11139	REV A

HEATER, .100 CC	
PART NUMBER	
PRPC__SAAN-T1RC	
SCALE: 4:1	
SHEET 1 OF 1	