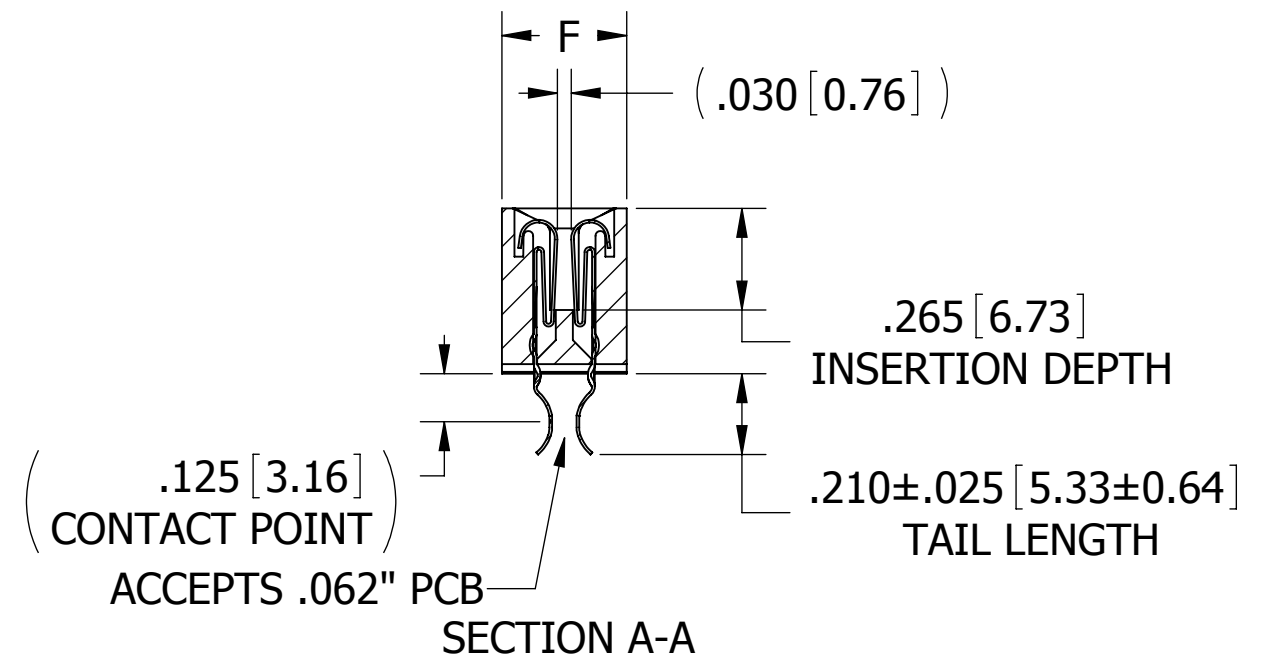
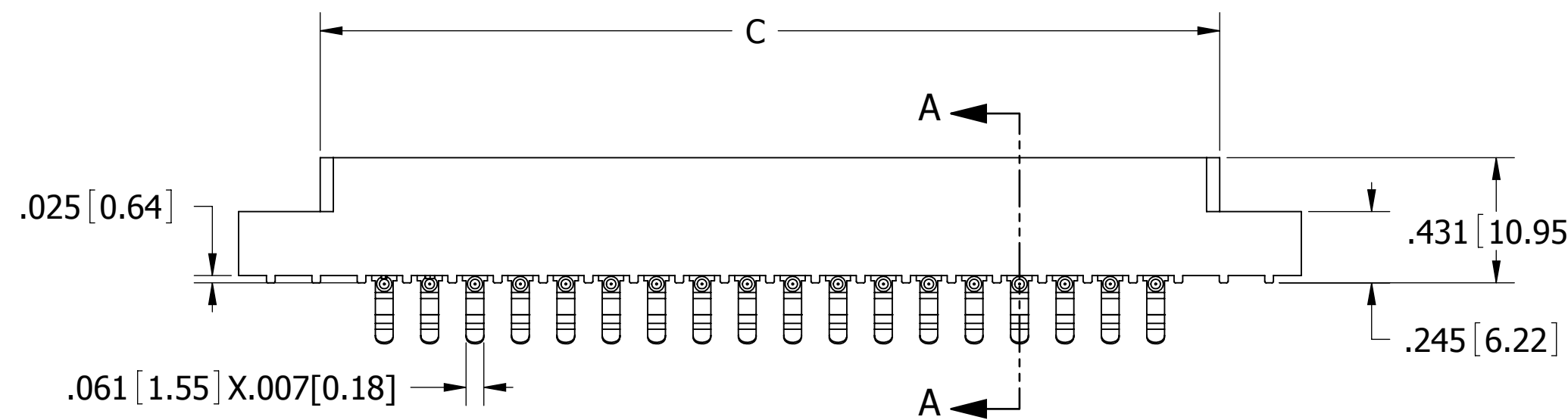
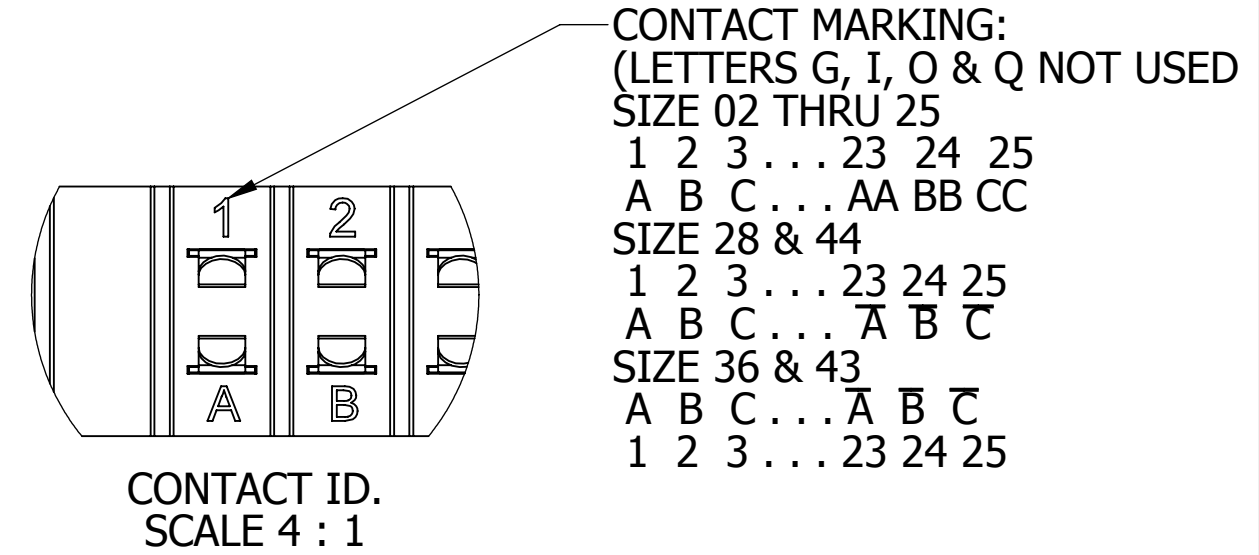
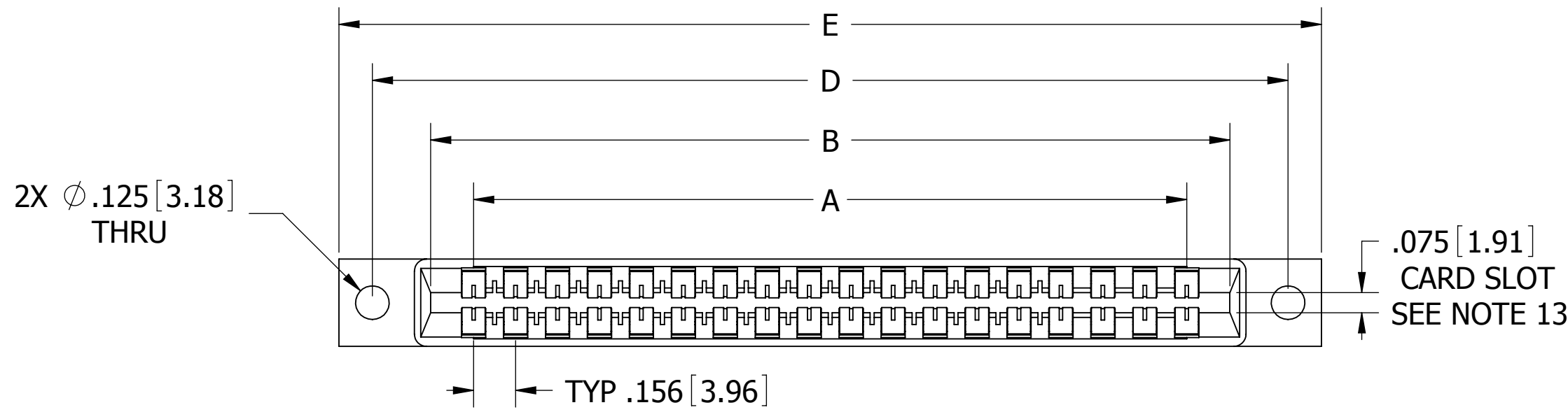
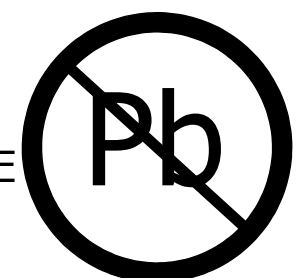


REVISIONS				
REV.	ECO. NO	DESCRIPTION	DATE	BY
A	2416	INITIAL RELEASE	07/29/11	SE
B	2687	UPDATE NOTE FORMAT, INSULATOR VIEW FOR '2' MTG, PROCESSING TEMP FOR PBT MTL	10/10/2012	JH



MP _ _ - _ 156 - _ _ - DSE - 1 _ _ _

- NOTES:
- INSULATOR MATERIAL: SEE PART NUMBER CODING
 - CONTACT MATERIAL: SEE PART NUMBER CODING
 - PLATING: .SEE PART NUMBER CODING
 - OPERATING TEMPERATURE: SEE PART NUMBER CODING
 - PROCESSING TEMP: SEE PART NUMBER CODING
 - UL FLAMMABILITY RATING: 94V-0
 - OPERATING VOLTAGE: 950 VAC MINIMUM AT SEA LEVEL
 - CURRENT RATING: 3 AMP
 - CONTACT RESISTANCE: 30 MILLI OHMS MAX
 - INSULATION RESISTANCE: 5000 MEGA OHMS
 - DURABILITY: 500 CYCLES MIN
 - CONNECTOR IDENTIFICATION: THE PART SHALL BE MARKED WITH A PART NUMBER AND LOT CODE
 - BOARD THICKNESS ACCOMMODATED: .062 ± .008 [1.57 ± 0.20]
 - INSERTION FORCE: 16 OZ MAX PER CONTACT PAIR WHEN USING A .062 [1.57] TEST BLADE
INTERNAL INSPECTION TO BE PER SULLIN'S WORK INSTRUCTION WI7.3-01
 - WITHDRAWAL FORCE: 1 OZ MIN PER CONTACT PAIR USING .062 [1.57] PCB



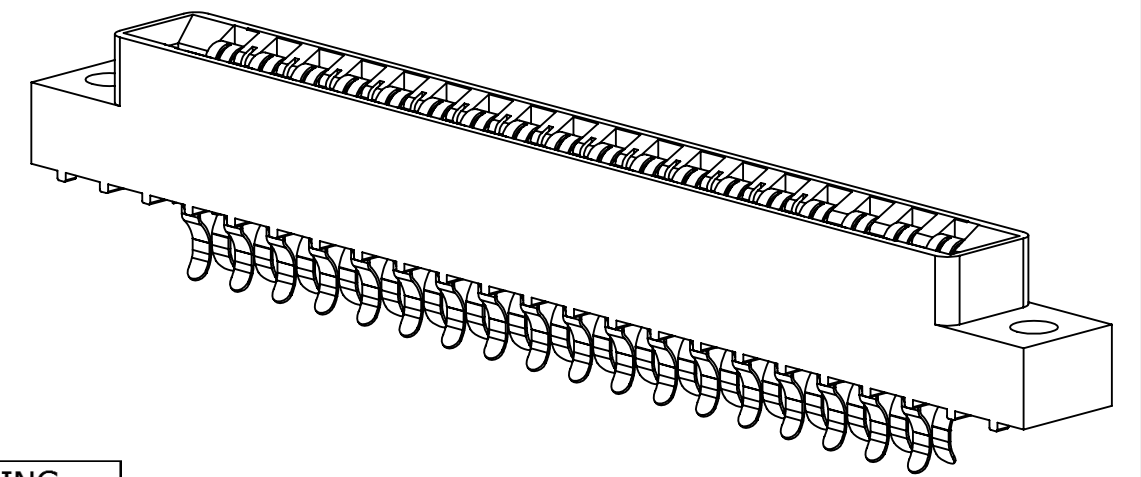
RoHS COMPLIANT

REF: _ _ M _ DRK _ P13, P69, S1077, S1165

CUSTOMER COPY

UNLESS OTHERWISE SPECIFIED: DIMENSIONS ARE IN INCHES [MM]	DRAWN	DATE	NAME	
		07/29/11	SE	
TOLERANCES: ANGULAR: ± 30' .XX=± .02 [5] .XXX=± .005 [13] .XXXX=± .0005 [013]	<small>THE INFORMATION HEREIN CONTAINS PROPRIETARY INFORMATION OF SULLINS ELECTRONICS AND IS NOT TO BE REPRODUCED, USED OR DISCLOSED TO OTHERS FOR ANY PURPOSE EXCEPT AS SPECIFICALLY AUTHORIZED IN WRITINGS BY AN OFFICER OF SULLINS ELECTRONICS.</small>			
	TITLE CARD EDGE, .156 CC LP			
PART NUMBER MP _ _ - 156 - _ _ - DSE - _ _ _				
INTERPRET DIMENSIONS AND TOLERANCING PER: ASME Y14.5M-2009	SIZE C	CAGE CODE 54453	DWG. NO. C11853	REV B
	SCALE: 2:1	SHEET 1 OF 3		

PART NUMBER	NO. OF POS.	A ± .008[0.20]		B ± .008[0.20]		C ± .015[0.38]		D ± .010[0.25]		E MAX		F +.005[0.13] -.015(0.38)	
		IN	MM	IN	MM	IN	MM	IN	MM	IN	MM	IN	MM
MP -0156-02-DSE-	2	0.156	3.96	0.476	12.09	0.596	15.14	"N" MOUNTING				0.325	8.26
MP -0156-03-DSE-	3	0.312	7.92	0.632	16.05	0.752	19.10						
MP -0156-06-DSE-	6	0.780	19.81	1.100	27.94	1.220	30.99	1.533	38.94	1.902	48.31		
MP -0156-08-DSE-	8	1.092	27.74	1.412	35.86	1.532	38.91	1.845	46.86	2.214	56.24		
MP -0156-10-DSE-	10	1.404	35.66	1.724	43.79	1.844	46.84	2.157	54.79	2.526	64.16		
MP -0156-11-DSE-	11	1.560	39.62	1.880	47.75	2.000	50.80	2.313	58.75	2.682	68.12		
MP -0156-12-DSE-	12	1.716	43.59	2.036	51.71	2.156	54.76	2.469	62.71	2.838	72.09		
MP -0156-15-DSE-	15	2.184	55.47	2.504	63.60	2.624	66.65	2.937	74.60	3.306	83.97		
MP -0156-18-DSE-	18	2.652	67.36	2.972	75.49	3.092	78.54	3.405	86.49	3.774	95.86		
MP -0156-22-DSE-	22	3.276	83.21	3.596	91.34	3.716	94.39	4.029	102.34	4.398	111.71		
MP -0156-24-DSE-	24	3.588	91.14	3.908	99.26	4.028	102.31	4.341	110.26	4.710	119.63		
MP -0156-25-DSE-	25	3.744	95.10	4.064	103.23	4.184	106.27	4.497	114.22	4.866	123.60		
MP -0156-28-DSE-	28	4.212	106.98	4.532	115.11	4.652	118.16	4.965	126.11	5.334	135.48	0.438	11.13
MP -0156-36-DSE-	36	5.460	138.68	5.780	146.81	5.900	149.86	6.213	157.81	6.582	167.18	0.500	12.70
MP -0156-43-DSE-	43	6.552	166.42	6.872	174.55	6.992	177.60	7.305	185.55	7.674	194.92		
MP -0156-44-DSE-	44	6.708	170.38	7.028	178.51	7.148	181.56	7.461	189.51	7.830	198.88		



PART NUMBER CODING

MP - 156 - DSE -

CONTACT MATERIAL

OMIT = PHOSPHOR BRONZE (SEE TABLE 2)
Y = BERYLLIUM COPPER (SEE TABLE 3)

PLATING MODIFICATION CODE (SEE TABLE 1)

MOUNTING STYLE

1 = .125" DIA. CLEARANCE HOLES
2 = #4-40 THREADED INSERT
4 = NO MOUNTING EARS
8 = .125" DIA. SIDE HOLES

NUMBER OF POSITIONS

INSULATOR MATERIAL

0 = PBT, BLUE
2 = PBT, GREEN
3 = PBT, BLACK
1 = PPS, BROWN
5 = PPS, BLACK
6 = PPS, GREEN
7 = PPS, BROWN

PLATING (SEE TABLE 1)

TABLE 1 (PLATING):

ALL PLATINGS HAVE .000050" NICKEL UNDERPLATE

	CONTACT SURFACE	TERMINATION	PLATING MODIFICATION CODE
MP	.000010" GOLD OVERALL		OMIT
	.000030" GOLD	.000010" GOLD OVERALL	G
MPSL	.000010" GOLD	.000100" PURE TIN, MATTE	K
	.000030" GOLD	.000100" PURE TIN, MATTE	GK
MPL	.000100" PURE TIN, MATTE OVERALL		K

(MPL PLATING AVAILABLE WITH PHOSPHOR BRONZE CONTACTS ONLY)

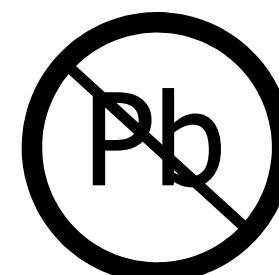
TABLE 2 (PHOSPHOR BRONZE CONTACTS):

INSULATOR MATERIAL CODE	OPERATING TEMPERATURE	PROCESSING TEMPERATURE
0, 2, 3	-65°C TO +125°C	WAVE ONLY
1, 5, 6, 7	-65°C TO +125°C	260°C FOR 120 SEC MAX

TABLE 3 (BERYLLIUM COPPER CONTACTS):

INSULATOR MATERIAL CODE	OPERATING TEMPERATURE	PROCESSING TEMPERATURE
0, 2, 3	-65°C TO +125°C	WAVE ONLY
1, 5, 6, 7	-65°C TO +150°C	260°C FOR 120 SEC MAX

CUSTOMER COPY



RoHS COMPLIANT

UNLESS OTHERWISE SPECIFIED: DIMENSIONS ARE IN INCHES [MM]	DRAWN	DATE	NAME	
		07/29/11	SE	
TOLERANCES: ANGULAR: ± 30' .XX = ± .02 [.5] .XXX = ± .005 [.13] .XXXX = ± .0005 [.013]	THE INFORMATION HEREIN CONTAINS PROPRIETARY INFORMATION OF SULLINS ELECTRONICS AND IS NOT TO BE REPRODUCED, USED OR DISCLOSED TO OTHERS FOR ANY PURPOSE EXCEPT AS SPECIFICALLY AUTHORIZED IN WRITING BY AN OFFICER OF SULLINS ELECTRONICS.			TITLE
	INTERPRET DIMENSIONS AND TOLERANCING PER: ASME Y14.5M-2009			CARD EDGE, .156 CC LP
PART NUMBER				REV
MP - 156 - DSE -				B
SIZE	CAGE CODE	DWG. NO.	REV	
C	54453	C11853	B	
SCALE: 2:1				SHEET 3 OF 3