

PART NUMBER CODING

G _ C _ _ D _ _ N

TERMINATION TYPE

NUMBER OF POSITIONS PER ROW

(01 THRU 36)

PLATING

ALL PLATINGS HAVE .000050" NICKEL UNDERPLATE

CONTACT SURFACE

TERMINATION

B = .000010" GOLD

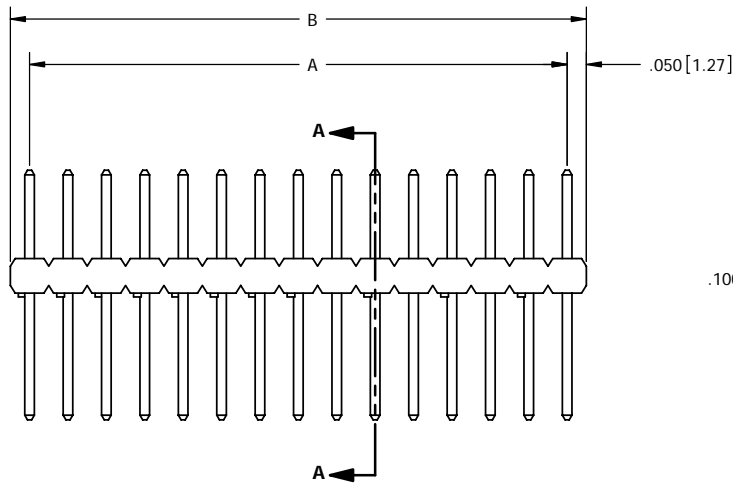
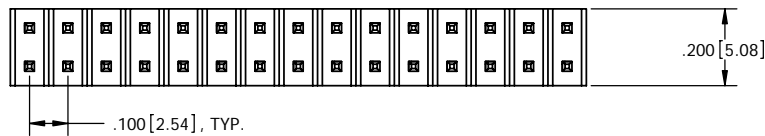
.000100" PURE TIN, MATTE

C = .000030" GOLD

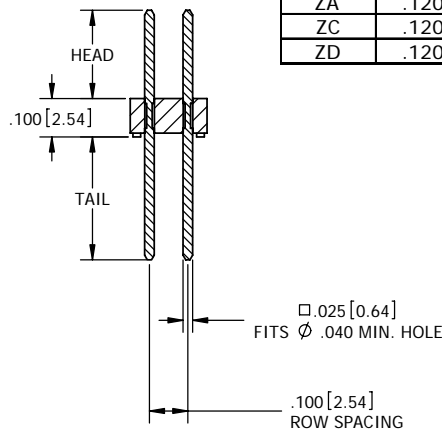
.000100" PURE TIN, MATTE

E = .000100" PURE TIN, MATTE OVERALL

LEAD FREE



G _ C _ _ D _ _ N
STRAIGHT TERMINATION



SECTION A-A

NOTES:

1. INSULATOR MATERIAL: PA9T.
2. CONTACT MATERIAL: PHOSPHOR BRONZE
3. PLATING: SEE TABLE
4. OPERATING TEMPERATURE: -65°C TO +125°C
5. PROCESSING TEMPERATURE: 260°C MAX FOR 2 MINUTES MAX.
6. UL FLAMMABILITY: 94V-0
7. VOLTAGE RATING: 600 VDC MINIMUM AT SEA LEVEL.
8. CURRENT RATING: 3 AMP
9. INSULATION RESISTANCE: 5000 MEGA OHMS.
10. MSL = 1



RoHS COMPLIANT

REVISIONS

REV.	ECO. NO	DESCRIPTION	DATE	BY
A	547	INITIAL RELEASE	2/17/2005	AN
B	702	UPDATED DIMENSIONS, MOVED STRAIGHT TERMINATION TO PAGE 1	8/15/2005	TT
C	1062	UPDATE DWG. AND TABLES, MOVED RA TERMINATION TO PAGE 2	06/19/2006	HT
D	1062	UPDATE DWG.	3/15/2007	SB

TERMINATION TYPE		
STRAIGHT		
CODE	HEAD DIMENSION ±.008 [0.20]	TAIL DIMENSION ±.010 [0.25]
AA	.230[5.84]	.120[3.05]
AB	.230[5.84]	.230[5.84]
AC	.230[5.84]	.320[8.13]
AD	.230[5.84]	.420[10.67]
AE	.230[5.84]	.520[13.21]
AF	.230[5.84]	.620[15.75]
AG	.230[5.84]	.720[18.29]
AH	.230[5.84]	.820[20.83]
FA	.318[8.08]	.120[3.05]
FB	.318[8.08]	.220[5.59]
FC	.318[8.08]	.320[8.13]
FD	.318[8.08]	.420[10.67]
FE	.318[8.08]	.520[13.21]
ZA	.120[3.05]	.120[3.05]
ZC	.120[3.05]	.260[6.60]
ZD	.120[3.05]	.610[15.49]

PART NUMBER	A		B	
	INCH ±.008	MM ±0.20	INCH ±.020	MM ±0.51
G_C01D_N	0.000	0.00	0.100	2.54
G_C02D_N	0.100	2.54	0.200	5.08
G_C03D_N	0.200	5.08	0.300	7.62
G_C04D_N	0.300	7.62	0.400	10.16
G_C05D_N	0.400	10.16	0.500	12.70
G_C06D_N	0.500	12.70	0.600	15.24
G_C07D_N	0.600	15.24	0.700	17.78
G_C08D_N	0.700	17.78	0.800	20.32
G_C09D_N	0.800	20.32	0.900	22.86
G_C10D_N	0.900	22.86	1.000	25.40
G_C11D_N	1.000	25.40	1.100	27.94
G_C12D_N	1.100	27.94	1.200	30.48
G_C13D_N	1.200	30.48	1.300	33.02
G_C14D_N	1.300	33.02	1.400	35.56
G_C15D_N	1.400	35.56	1.500	38.10
G_C16D_N	1.500	38.10	1.600	40.64
G_C17D_N	1.600	40.64	1.700	43.18
G_C18D_N	1.700	43.18	1.800	45.72
G_C19D_N	1.800	45.72	1.900	48.26
G_C20D_N	1.900	48.26	2.000	50.80
G_C21D_N	2.000	50.80	2.100	53.34
G_C22D_N	2.100	53.34	2.200	55.88
G_C23D_N	2.200	55.88	2.300	58.42
G_C24D_N	2.300	58.42	2.400	60.96
G_C25D_N	2.400	60.96	2.500	63.50
G_C26D_N	2.500	63.50	2.600	66.04
G_C27D_N	2.600	66.04	2.700	68.58
G_C28D_N	2.700	68.58	2.800	71.12
G_C29D_N	2.800	71.12	2.900	73.66
G_C30D_N	2.900	73.66	3.000	76.20
G_C31D_N	3.000	76.20	3.100	78.74
G_C32D_N	3.100	78.74	3.200	81.28
G_C33D_N	3.200	81.28	3.300	83.82
G_C34D_N	3.300	83.82	3.400	86.36
G_C35D_N	3.400	86.36	3.500	88.90
G_C36D_N	3.500	88.90	3.600	91.44

CUSTOMER COPY

UNLESS OTHERWISE SPECIFIED: DIMENSIONS ARE IN INCHES[MM]		DATE	NAME
TOLERANCES: ANGULAR: ± 1° XX = ± .02 [.508] .XXX = ± .005 [.1270] XXXX = ± .0005 [.0127] PARENTHETICAL INFORMATION IS FOR REFERENCE ONLY		8/2/2005	AN
INTERPRET DIMENSIONS AND GEOMETRIC TOLERANCING PER: ANSI Y14.5-1984		THE INFORMATION HEREIN CONTAINS PROPRIETARY INFORMATION OF SULLINS ELECTRONICS AND IS NOT TO BE REPRODUCED, USED OR DISCLOSED TO OTHERS FOR ANY PURPOSE EXCEPT AS SPECIFICALLY AUTHORIZED IN WRITING BY AN OFFICER OF SULLINS ELECTRONICS.	
SULLINS ELECTRONICS		DESCRIPTION "100" MALE HEADER	
PART NUMBER G_C _ D _ N		SIZE C	REV D
SCALE: 4:1		DWG. NO. C10419	SHEET 1 OF 1