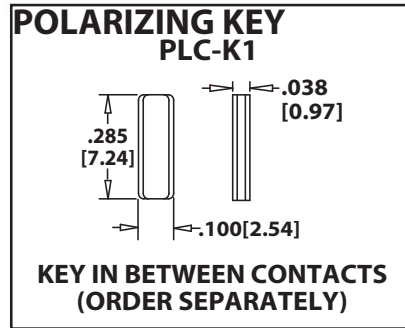
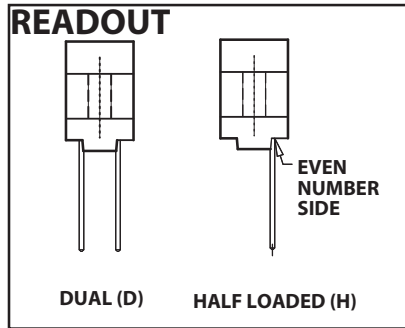
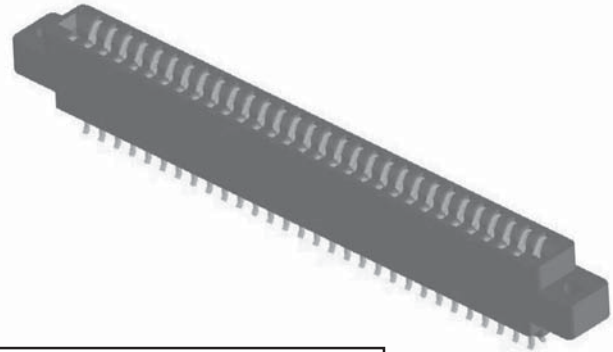




**.125" [3.18 mm] Contact Centers, .610" [15.49 mm] Insulator Height  
Dip Solder/Wire Wrap/Right Angle**

**SPECIFICATIONS**

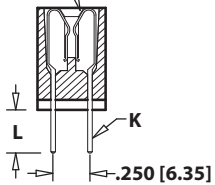
- Accommodates .062" ± .008" [1.57 ± .20] PC board (Consult factory for .031" ± .008" [.79 ± .20], See page 52/53 for .093" ± .008" [2.36 ± .20] and .125" ± .008" [3.18 ± .20] PC boards)
- PBT, PPS or PA9T insulator
- Molded-in key available
- 3 amp current rating per contact
- 30 milli ohm maximum at rated current
- Consult Factory for (MBB) Contacts



Sullins Edgecards

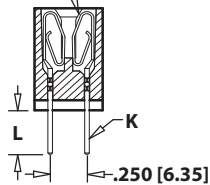
**TERMINATION TYPE**

**HAIRPIN BELLOWS**

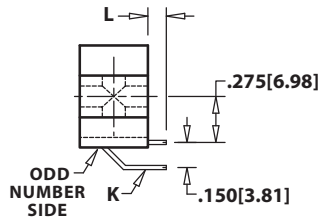


HAIRPIN BELLOWS  
(CK,CS,CM,CW,CT)

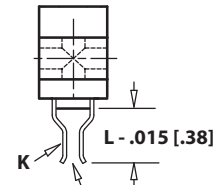
**LOOP BELLOWS**



LOOP BELLOWS  
(TK,RS,RM,CK)



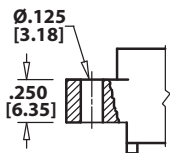
RIGHT ANGLE, DIP SOLDER  
(CA,CB,CC,TA,TB,TM)



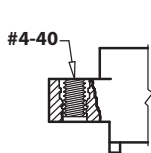
CARD EXTENDER  
REQUIRES -S288 MODIFICATION CODE  
(CS,CM,CT,RS,CK,TK,RM)

HAIRPIN BELLOWS	LOOP BELLOWS	TERMINATION TYPE	POST CROSS SECTION K	POST LENGTH L ± .025 [64]	FITS MIN. HOLE SIZE
	TK, CK	DIP SOLDER	.026 [66] ROUND	.190 [4.83]	.030 [0.76]
	RS	DIP SOLDER	.025 [64] SQUARE	.190 [4.83]	.040 [1.02]
CM	RM	WIRE WRAP	.025 [64] SQUARE	.560 [14.20]	.040 [1.02]
CA	TA	RIGHT ANGLE	.025 [64] SQUARE	.100 [2.54]	.043 [1.09]
CB	TB	RIGHT ANGLE	.025 [64] SQUARE	.180 [4.57]	.043 [1.09]
CC	TM	RIGHT ANGLE	.025 [64] SQUARE	.250 [6.35]	.043 [1.09]
CW		DIP SOLDER	.015 x .025 [.38 x .64]	.125 [3.18]	.035 [0.76]
CT		DIP SOLDER	.015 x .025 [.38 x .64]	.170 [4.32]	.035 [0.76]
CS		DIP SOLDER	.025 [64] SQUARE	.160 [4.06]	.040 [1.02]

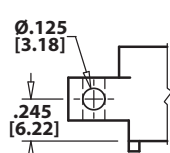
**MOUNTING STYLE**



CLEARANCE HOLE (H)



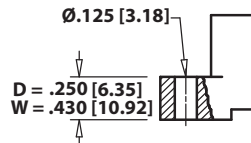
THREADED INSERT (I)



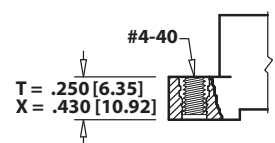
SIDE MOUNTING (S)



NO MOUNTING EARS (N)



FLUSH MOUNTING (D, W)



FLUSH MOUNTING WITH THREADED INSERT (T, X)



**.125" [3.18 mm] Contact Centers, .610" [15.49 mm] Insulator Height Dip Solder/Wire Wrap/Right Angle**

Sullins Edgecards

**PART NUMBER CODING**

**E B A 50 D CM H - Sxxx**

**MATERIALS (Insulator/Contact)**  
 E = PBT/Phosphor Bronze (Standard)  
 R = PPS/Phosphor Bronze  
 G = PA9T/Phosphor Bronze  
 A = PPS/Beryllium Copper  
 J = PA9T/Beryllium Copper  
 (Consult Factory for Other Materials)

**CONTACT FINISH - RoHS Compliant**  
**All platings are Lead Free and have .000050" Nickel underplate**

Contact Surface	Termination
B = .000010" Gold	.000100" Pure Tin, Matte
C = .000030" Gold	.000100" Pure Tin, Matte
G = .000010" Gold	.000005" Gold
Y = .000030" Gold	.000005" Gold
Contact Surface	Overall Plating
S = .000010" Gold	.000010" Gold
M = .000030" Gold	.000010" Gold
E = .000100" Pure Tin, Matte	.000100" Pure Tin, Matte

**CONTACT CENTERS**  
 A = .125" [3.18mm]

**NUMBER OF CONTACT POSITIONS**  
 See Chart Below

**READOUT (Opposite Page)**  
 D = Dual  
 H = Half Loaded

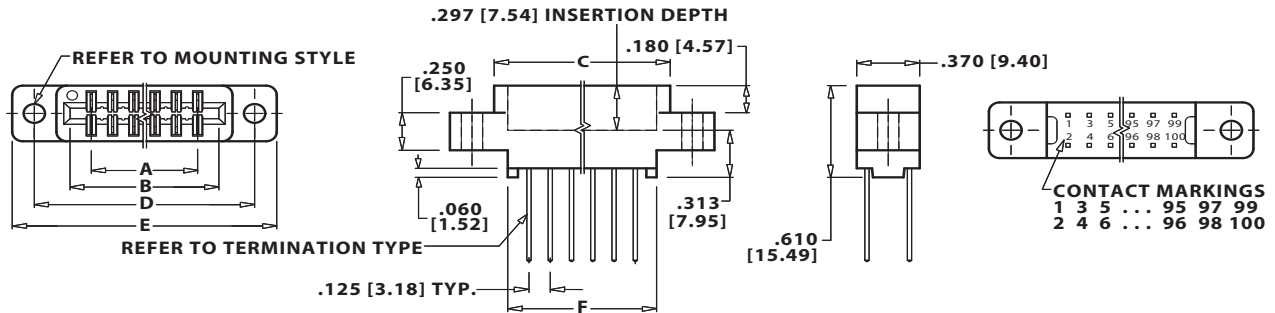
**MODIFICATION CODE (Consult Factory)**  
 OMIT FOR STANDARD  
 -S288 = Card Extender Accepts .062" [1.57] PCB

**MOUNTING STYLE (Opposite Page)**  
 H = Clearance Holes  
 I = Threaded Inserts  
 S = Side Mounting  
 N = No Mounting  
 W = Flush Mounting  
 D = Flush Mounting  
 X = Flush Mounting with Threaded Inserts  
 T = Flush Mounting with Threaded Inserts

**TERMINATION TYPE (Opposite Page)**  
**Hairpin Bellows \*\***  
 CS = .025" [0.64mm] Square Dip Solder  
 CM = .025 [0.64mm] Square Wire Wrap  
 CA, CB, CC = .025" [0.64mm] Square Right Angle  
 CW, CT = .015" x .025" [0.38 x .64] Dip Solder  
**Loop Bellows**  
 RS = .025" [0.64mm] Square Dip Solder  
 CK, TK = .026" [0.66mm] Round Dip Solder  
 RM = .025" [0.64mm] Square Wire Wrap  
 TA, TB, TM = .025" [0.64mm] Square Right Angle  
**\*\*Available with B or C plating and Phosphor Bronze Only**

**DIMENSIONS**

Dimensions in [ ] are in millimeters, all others are in inches.



Tolerances with PPS Insulator Material may vary slightly due to shrinkage differential: Consult Factory.

POSITIONS/ CONTACTS	INCHES						[MILLIMETERS]					
	A±.008	B±.008	C±.015	D±.010	E±.020	F±.015	A±0.20	B±0.20	C±0.38	D±0.25	E±0.51	F±0.38
06/12	0.625	0.875	1.035	1.295	1.555	0.875	15.88	22.23	26.29	32.89	39.50	22.23
10/20	1.125	1.375	1.535	1.795	2.055	1.375	28.58	34.93	38.99	45.59	52.20	34.93
14/28	1.625	1.875	2.035	2.295	2.555	1.875	41.28	47.63	51.69	58.29	64.90	47.63
15/30	1.750	2.000	2.160	2.420	2.680	2.000	44.45	50.80	54.86	61.47	68.07	50.80
18/36	2.125	2.375	2.535	2.795	3.055	2.375	53.98	60.33	64.39	70.99	77.60	60.33
22/44	2.625	2.875	3.035	3.295	3.555	2.875	66.68	73.03	77.09	83.69	90.30	73.03
24/48	2.875	3.125	3.285	3.545	3.805	3.125	73.03	79.38	83.44	90.04	96.65	79.38
25/50*	3.000	3.250	3.410	3.670	3.930	3.250	76.20	82.55	86.61	93.22	99.82	82.55
28/56	3.375	3.625	3.785	4.045	4.305	3.625	85.73	92.08	96.14	102.74	109.35	92.08
30/60	3.625	3.875	4.035	4.295	4.555	3.875	92.08	98.43	102.49	109.09	115.70	98.43
31/62	3.750	4.000	4.160	4.420	4.680	4.000	95.25	101.60	105.66	112.27	118.87	101.60
32/64	3.875	4.125	4.285	4.545	4.805	4.125	98.43	104.78	108.84	115.44	122.05	104.78
35/70	4.250	4.500	4.660	4.920	5.180	4.500	107.95	114.30	118.36	124.97	131.57	114.30
36/72	4.375	4.625	4.785	5.045	5.305	4.625	111.13	117.48	121.54	128.14	134.75	117.48
40/80	4.875	5.125	5.285	5.545	5.805	5.125	123.83	130.18	134.24	140.84	147.45	130.18
43/86	5.250	5.500	5.660	5.920	6.180	5.500	133.35	139.70	143.76	150.37	156.97	139.70
44/88	5.375	5.625	5.785	6.045	6.305	5.625	136.53	142.88	146.94	153.54	160.15	142.88
49/98	6.000	6.250	6.410	6.670	6.930	6.250	152.40	158.75	162.81	169.42	176.02	158.75
50/100	6.125	6.375	6.535	6.795	7.055	6.375	155.58	161.93	165.99	172.59	179.20	161.93

\* Consult factory for availability.