



## Technical Data Sheet

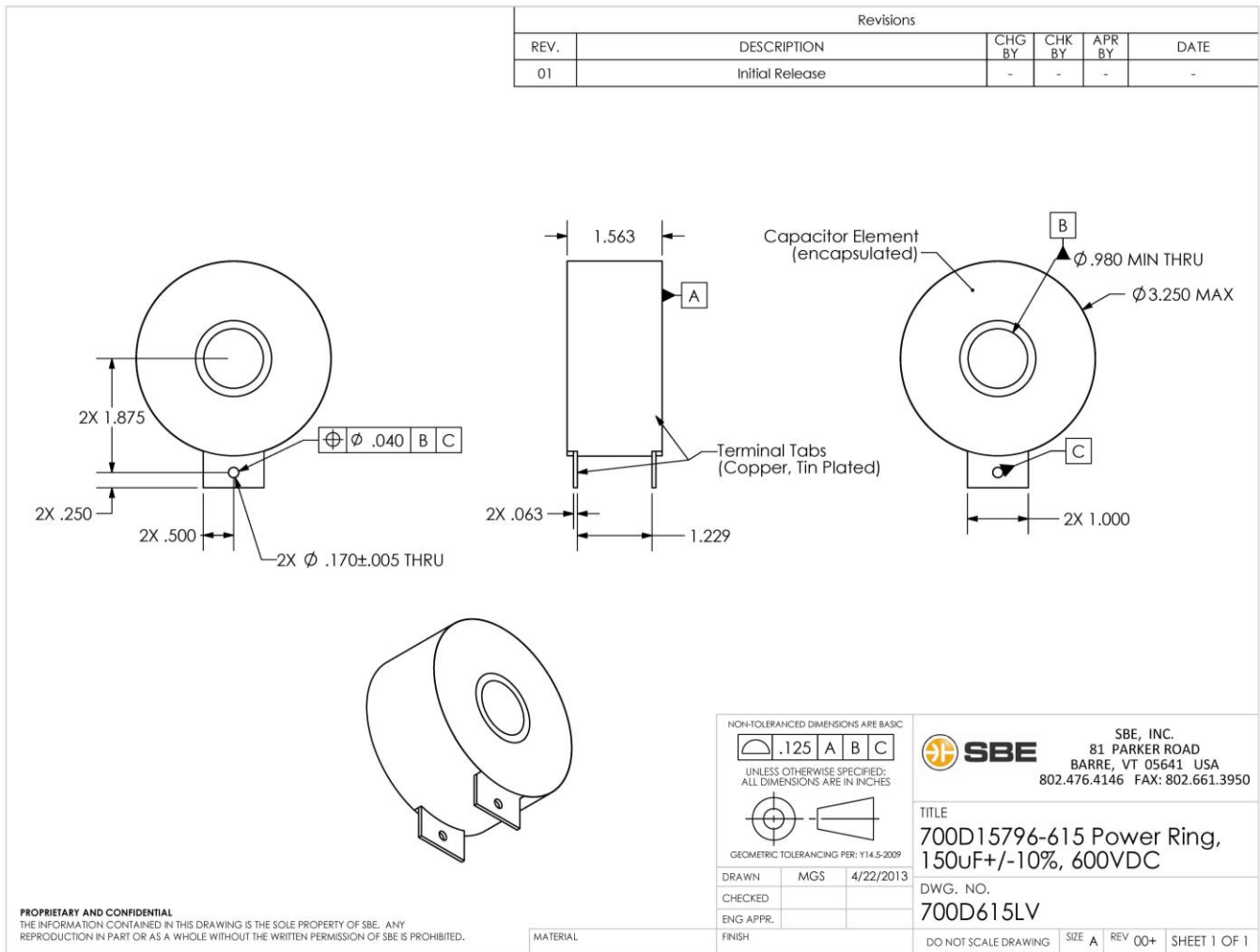
### Electrical Specifications

<b>Capacitance/Tolerance:</b>	150 $\mu$ F $\pm$ 10%
<b>DC Voltage Rating:</b>	600 VDC
<b>Dielectric/Construction:</b>	Metallized Polypropylene film. Single section design/non-inductively wound
<b>Dielectric</b>	
<b>Withstand Voltage:</b>	Units 100% tested at a DC potential of 750 Volts for two minutes @ +25°C
<b>Maximum Surge Voltage:</b>	Units should not be exposed to a surge voltage greater than 750 Volts
<b>Insulation Resistance:</b>	666 M $\Omega$ Minimum at +25°C
<b>ESR @ 20 KHz.:</b>	< 0.9 milliohms
<b>ESL:</b>	< 20 nH. The actual capacitor loop inductance will depend on the application interconnect design.
<b>Operating Temperature:</b>	-40°C to +85°C at full DC voltage
<b>Voltage, Temperature</b>	
<b>De-rating:</b>	De-rate voltage linearly to 400 VDC from +85°C to +105°C
<b>Peak Current Rating:</b>	2500 Amps Repetitive
<b>Peak Fault Current:</b>	5000 Amps, one-time event
<b>RMS Current Rating:</b>	35 Amps RMS. Assumes a terminal temperature < 85°C.

### Mechanical Specifications

<b>Dimensions:</b>	See following layout drawing.										
<b>Core:</b>	Hollow phenolic core with 1.0" nominal I.D. (meets UL-94HB specs).										
<b>Core extension:</b>	None. Core is flush with end fill surface.										
<b>Terminals:</b>	Tin coated copper, 0.063" thick by 1.0" wide.										
<b>Encapsulation:</b>	Outer tape wrap of flame retardant polyester tape (meets UL510 specifications). Potted with RTV silicone.										
<b>Mechanical Mounting:</b>	Mounting or clamping of the capacitor should take place using the core.										
<b>Marking:</b>	<table><tr><td>SBE</td><td>SBE Company Identification</td></tr><tr><td>700D615</td><td>Unique SBE Part Number</td></tr><tr><td>150<math>\mu</math>F <math>\pm</math>10%</td><td>Capacitance value and Tolerance</td></tr><tr><td>600 VDC</td><td>DC Voltage Rating</td></tr><tr><td>yyww-lot#-unit</td><td>Serial Number (date code, lot number, unit number)</td></tr></table>	SBE	SBE Company Identification	700D615	Unique SBE Part Number	150 $\mu$ F $\pm$ 10%	Capacitance value and Tolerance	600 VDC	DC Voltage Rating	yyww-lot#-unit	Serial Number (date code, lot number, unit number)
SBE	SBE Company Identification										
700D615	Unique SBE Part Number										
150 $\mu$ F $\pm$ 10%	Capacitance value and Tolerance										
600 VDC	DC Voltage Rating										
yyww-lot#-unit	Serial Number (date code, lot number, unit number)										

# Layout Drawing:



Rev. 5/15/13

**SBE Inc., Power Ring Division**  
 81 Parker Road • Barre, VT 05641 USA  
**Tel:** 802-476-4146 • **Fax:** 802-661-3950  
**Email:** [PowerRing@SBElectronics.com](mailto:PowerRing@SBElectronics.com)  
**Web:** [www.SBElectronics.com](http://www.SBElectronics.com)



ISO 9001  
 QMI-SAI Global

**At the *Leading Edge* of Film Capacitor Technology™**