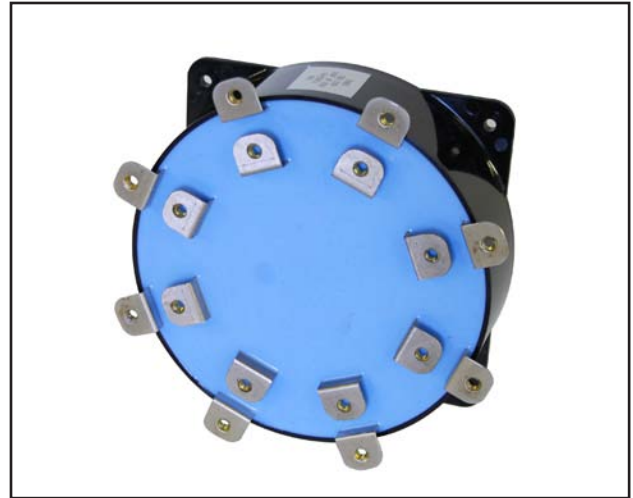




# Power Ring Film Capacitors™

SBE Part #: 700D50796-349

## Power Ring Film Capacitor™ 500 $\mu$ F 600 VDC



### Electrical Specifications

<b>Capacitance/Tolerance:</b>	500 $\mu$ F, $\pm$ 10%
<b>DC Voltage Rating:</b>	600 VDC
<b>Dielectric/Construction:</b>	Metallized Polypropylene. Single section design, non-inductively wound
<b>Dielectric Withstand:</b>	Unit shall withstand a DC potential of 750 Volts for two minutes
<b>Insulation Resistance:</b>	200 M $\Omega$ Min at +25°C
<b>ESR @ 100 KHz.:</b>	< 0.30 milliohms
<b>ESL:</b>	~15 nH. The actual capacitor loop inductance will depend on the application interconnect design
<b>Operating Temperature:</b>	-55°C to +85°C at full DC voltage rating
<b>Peak Current Rating:</b>	5000 Amps maximum
<b>RMS Current Rating:</b>	100 Amps RMS at +85°C. Assumes an approximate +10°C temperature rise from outer case to internal capacitor hot spot
<b>Voltage, Current Temperature De-rating:</b>	For applications above +85°C please contact SBE

### Mechanical Specifications

<b>Dimensions:</b>	Refer to layout details
<b>Terminals:</b>	Nickel plated copper, 0.032" thick
<b>Encapsulation:</b>	Polycarbonate outer housing, potted with RTV silicone
<b>Mechanical Mounting:</b>	It will be important to mount this unit using the 4 connection points of the plastic housing to provide stress relief for the terminals.

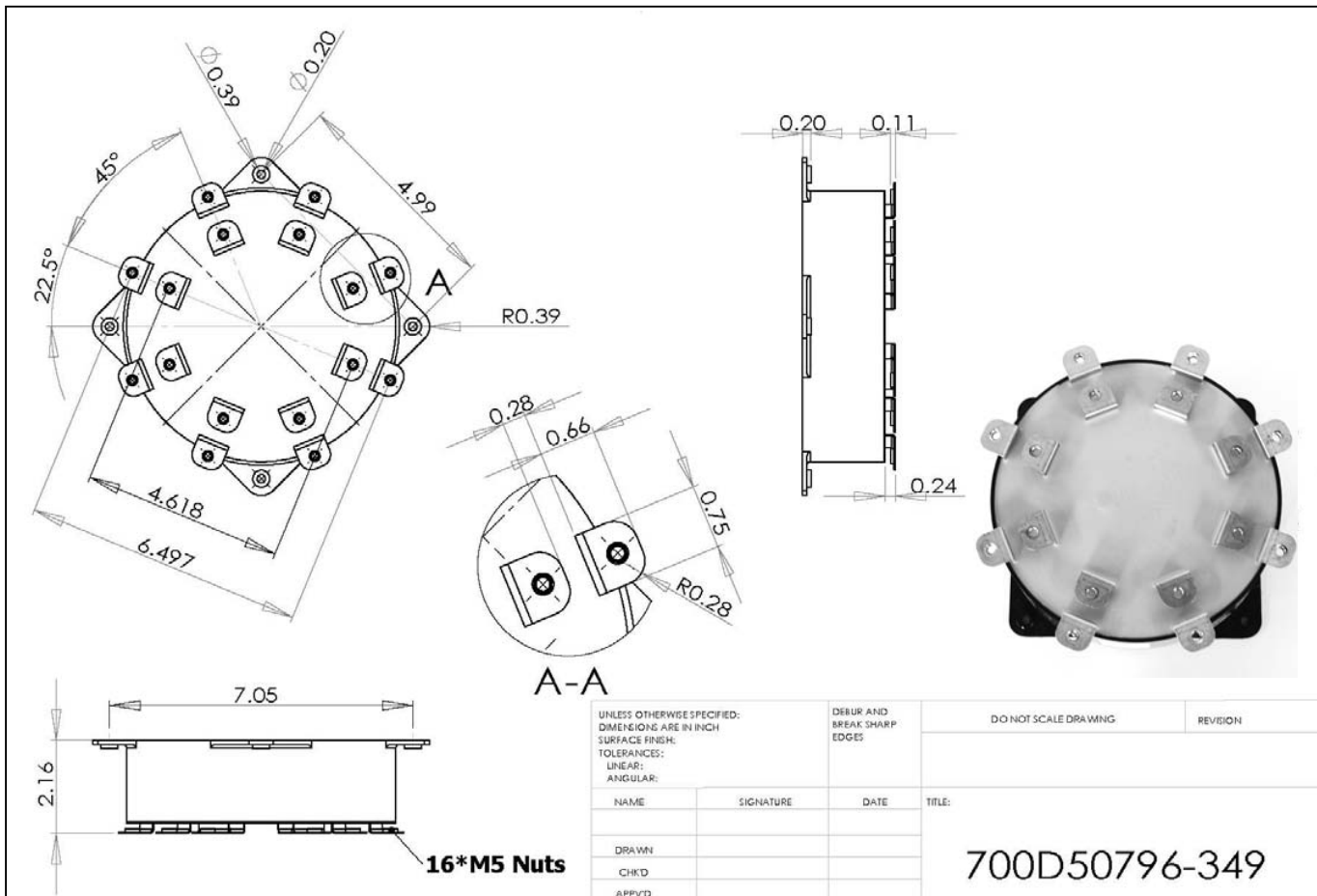
<b>Marking:</b>	SBE	SBE Company Identification
	700D349	SBE Part Number
	500 $\mu$ F $\pm$ 10%	Capacitance value and tolerance
	600 VDC	DC Voltage Rating
	yyww	Weekly date code (i.e. 0815 = 15 <sup>th</sup> week of 2008)



# Power Ring Film Capacitors™

SBE Part #: 700D50796-349

## Layout Details



Contact SBE for more details. Thank you.

ISO 9001:2000



#SBEPowerRing700D50796-349-1/09

SBE Inc. 131 South Main Street  
Barre, Vermont 05641-4854 USA

telephone: 802-476-4146  
fax: 802-476-4149

web site: [www.SBElectronics.com](http://www.SBElectronics.com)  
e-mail: [PowerRing@SBElectronics.com](mailto:PowerRing@SBElectronics.com)