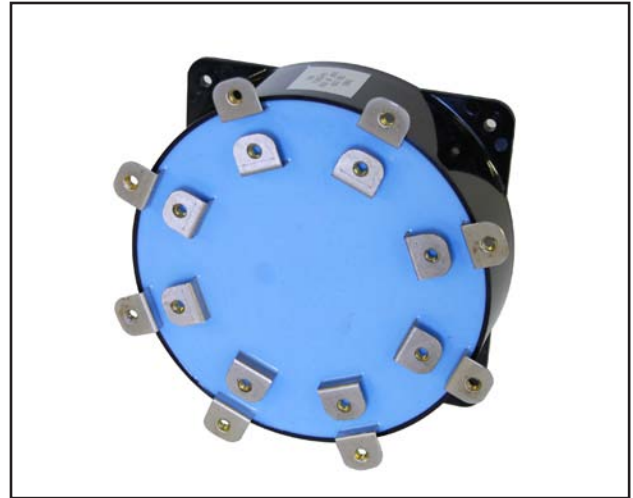




Power Ring Film Capacitors™

SBE Part #: 700D10896-348

Power Ring Film Capacitor™ 1000 μ F 600 VDC



Electrical Specifications

| | |
|--|---|
| Capacitance/Tolerance: | 1000 μ F \pm 10% |
| DC Voltage Rating: | 600 VDC |
| Dielectric/Construction: | Metallized Polypropylene. Single section design, non-inductively wound |
| Dielectric Withstand: | Unit shall withstand a DC potential of 750 Volts for two minutes |
| Insulation Resistance: | 100 M Ω Min at +25°C |
| ESR @ 100 KHz.: | < 0.15 milliohms |
| ESL: | ~15 nH. The actual capacitor loop inductance will depend on the application interconnect design |
| Operating Temperature: | -55°C to +85°C at full DC voltage rating |
| Peak Current Rating: | 10000 Amps maximum |
| RMS Current Rating: | 200 Amps RMS at +85°C. Assumes an approximate +10°C temperature rise from outer case to internal capacitor hot spot |
| Voltage, Current Temperature De-rating: | For applications above +85°C please contact SBE |

Mechanical Specifications

| | |
|-----------------------------|--|
| Dimensions: | Refer to layout details |
| Terminals: | Nickel plated copper, 0.032" thick |
| Encapsulation: | Polycarbonate outer housing, potted with RTV silicone |
| Mechanical Mounting: | It will be important to mount this unit using the 4 connection points of the plastic housing to provide stress relief for the terminals. |

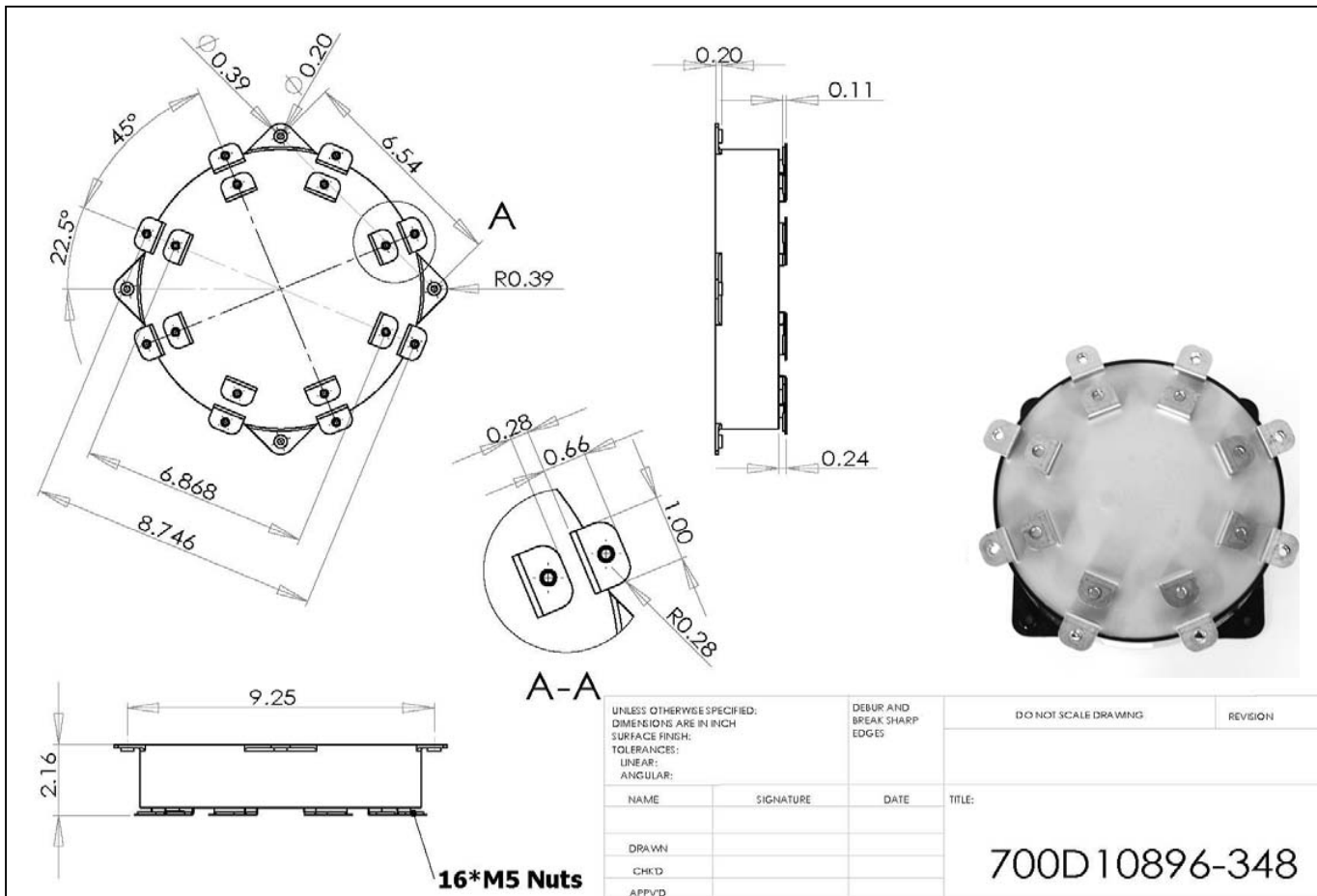
| | | |
|-----------------|------------------------|--|
| Marking: | SBE | SBE Company Identification |
| | 700D348 | SBE Part Number |
| | 1000 μ F \pm 10% | Capacitance value and tolerance |
| | 600 VDC | DC Voltage Rating |
| | yyww | Weekly date code (i.e. 0815 = 15 th week of 2008) |



Power Ring Film Capacitors™

SBE Part #: 700D10896-348

Layout Details



Contact SBE for more details. Thank you.

ISO 9001:2000



#SBEPowerRing700D10896-348-1/09

SBE Inc. 131 South Main Street
Barre, Vermont 05641-4854 USA

telephone: 802-476-4146
fax: 802-476-4149

web site: www.SBElectronics.com
e-mail: Info@SBElectronics.com