

FIG. 1

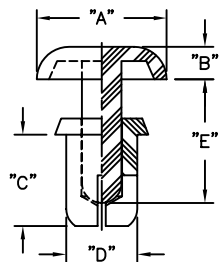
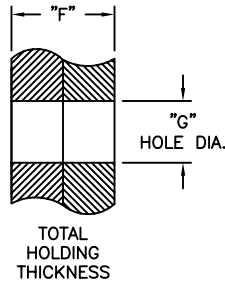


FIG. 2



- NOTES:
 1. MATERIAL: NYLON 6, (RMS-52)
 COLOR: BLACK & WHITE STANDARD.
 MATERIAL: NYLON 6, UL94 V-0, (RMS-103)
 COLOR: BLACK.
 AVAILABLE BY SPECIAL ORDER.
 TO ORDER USE P/N: SRVO-XXXX
 2. GREEN (GN), YELLOW (YL), RED (RD), BLUE (BL),
 AND GRAY (GY), AVAILABLE BY SPECIAL ORDER ONLY.

MAT'L: NYLON 6 (RMS-52) PART NO.	HOLE DIA. "G"	EXTRACTION FORCE LB (KG)	THICKNESS "F"	"A" ±.008 (±0.2)	"B" ±.008 (±0.2)	"C" ±.012 (±0.3)	"D"	"E" ±.012 (±0.3)	FIG. NO.
SR-2024	.083-.087 (2.1-2.2)	6.6 MIN. (3 MIN)	.024-.047 (0.6-1.2)	.165 (4.2)	.047 (1.2)	.09 (2.4)	.079 (2.0)	.11 (2.8)	1
SR-2032			.051-.079 (1.3-2.0)			.13 (3.2)		.15 (3.8)	
SR-2040			.083-.110 (2.1-2.8)			.16 (4.0)		.22 (5.5)	
SR-2048			.114-.142 (2.9-3.6)			.19 (4.8)		.28 (7.2)	
SR-2056			.146-.173 (3.7-4.4)			.22 (5.6)		.28 (7.1)	
SR-2064			.173-.197 (4.4-5.0)			.25 (6.4)			
SR-2632	.102-.106 (2.6-2.7)	11.0 MIN. (5 MIN.)	.039-.079 (1.0-2.0)	.197 (5.0)	.055 (1.4)	.13 (3.2)	.102 (2.6)	.18 (4.5)	1
SR-2642			.079-.118 (2.0-3.0)			.17 (4.2)		.24 (6.1)	
SR-2648			.106-.142 (2.7-3.6)			.19 (4.8)		.31 (7.8)	
SR-2655			.134-.169 (3.4-4.3)			.22 (5.5)			
SR-2664			.169-.205 (4.3-5.2)			.25 (6.4)			
SR-2672			.201-.236 (5.1-6.0)			.28 (7.2)			
SR-3035	.122-.126 (3.1-3.2)	17.6 MIN. (8 MIN.)	.039-.079 (1.0-2.0)	.252 (6.4)	.063 (1.6)	.14 (3.5)	.118 (3.0)	.20 (5.1)	1
SR-3045			.079-.118 (2.0-3.0)			.18 (4.5)		.28 (7.1)	
SR-3055			.118-.158 (3.0-4.0)			.22 (5.5)		.35 (9.0)	
SR-3065			.158-.197 (4.0-5.0)			.26 (6.5)		.43 (11.0)	
SR-3075			.197-.236 (5.0-6.0)			.30 (7.5)			
SR-3080			.217-.256 (5.5-6.5)			.31 (8.0)			
SR-3090	.256-.295 (6.5-7.5)	.35 (9.0)							
SR-3100		.295-.335 (7.5-8.5)	.39 (10.0)						
SR-3535	.142-.146 (3.6-3.7)	26.4 MIN. (12 MIN.)	.047-.083 (1.2-2.1)	.252 (6.4)	.063 (1.6)	.14 (3.5)	.138 (3.5)	.20 (5.1)	2
SR-3545			.083-.118 (2.1-3.0)			.18 (4.5)		.24 (6.1)	
SR-3550			.106-.142 (2.7-3.6)			.20 (5.0)		.28 (7.1)	
SR-3555			.118-.158 (3.0-4.0)			.22 (5.5)		.35 (9.0)	
SR-3560			.146-.181 (3.7-4.6)			.24 (6.0)		.36 (9.1)	
SR-3570			.177-.217 (4.5-5.5)			.28 (7.0)			
SR-3580	.217-.256 (5.5-6.5)	.31 (8.0)							
SR-4050	.161-.165 (4.1-4.2)	44.0 MIN. (20 MIN.)	.098-.138 (2.5-3.5)	.315 (8.0)	.071 (1.8)	.20 (5.0)	.158 (4.0)	.28 (7.1)	2
SR-4060			.138-.177 (3.5-4.5)			.24 (6.0)		.35 (9.0)	
SR-4070			.177-.217 (4.5-5.5)			.28 (7.0)		.43 (11.0)	
SR-4080			.217-.256 (5.5-6.5)			.31 (8.0)		.55 (14.0)	
SR-4090			.256-.295 (6.5-7.5)			.35 (9.0)			
SR-4100			.295-.335 (7.5-8.5)			.39 (10.0)			
SR-4120		.354-.413 (9.0-10.5)	.47 (12.0)						
SR-5045	.201-.205 (5.1-5.2)	55.0 MIN. (25 MIN.)	.059-.098 (1.5-2.5)	.354 (9.0)	.087 (2.2)	.18 (4.5)	.197 (5.0)	.26 (6.5)	2
SR-5055			.098-.138 (2.5-3.5)			.22 (5.5)		.33 (8.5)	
SR-5065			.138-.177 (3.5-4.5)			.26 (6.5)		.41 (10.5)	
SR-5075			.177-.217 (4.5-5.5)			.30 (7.5)		.47 (12.0)	
SR-5085			.217-.256 (5.5-6.5)			.33 (8.5)			
SR-5095			.256-.295 (6.5-7.5)			.37 (9.5)			
SR-5105	.295-.335 (7.5-8.5)	.41 (10.5)							
SR-6060	.240-.244 (6.1-6.2)	66.0 MIN. (30 MIN.)	.098-.158 (2.5-4.0)	.472 (12.0)	.098 (2.5)	.24 (6.0)	.236 (6.0)	.35 (9.0)	2
SR-6080			.138-.217 (3.5-5.5)		.118 (3.0)	.31 (8.0)		.39 (10.0)	

TITLE: SNAP-RIVETS				DWG IN IN (MM)		FINAL			
TOLERANCES UNLESS NOTED .XX=±.010 .XXX=±.005 FRAC=1/64 ANG=1°		FILE # SR	DWN: J.B.	APP:	PART #		PRINT TYPE		
MATERIAL: SEE NOTES		DT: 02/28/97	DT:	SEE CHART		CA			
RE: RICHCO, INC.		RICHCO INC. PO BOX 804238, CHICAGO, 60680 (773) 539-4060							

L	SEE ECN #862 FOR CHANGES	SM 10.04.04
-	SEE ENGINEERING FOR REV. A-H	-
REV	DESCRIPTION	ENGR DATE