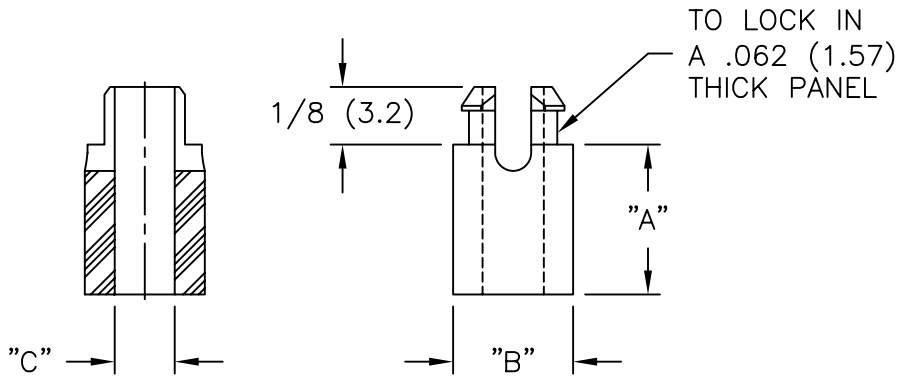
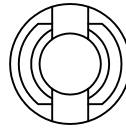


PART NO.			DIM. "A"
FOR #4 (M3) SCREW	FOR #6 (M3.5) SCREW	FOR #8 (M4) SCREW	
SRS4-2-01	-	-	1/8 (3.2)
SRS4-3-01	-	-	3/16 (4.8)
SRS4-4-01	SRS6-4-01	SRS8-4-01	1/4 (6.4)
SRS4-5-01	SRS6-5-01	SRS8-5-01	5/16 (7.9)
SRS4-6-01	SRS6-6-01	SRS8-6-01	3/8 (9.5)
SRS4-7-01	SRS6-7-01	SRS8-7-01	7/16 (11.1)
SRS4-8-01	SRS6-8-01	SRS8-8-01	1/2 (12.7)
SRS4-10-01	SRS6-10-01	SRS8-10-01	5/8 (15.9)
SRS4-12-01	SRS6-12-01	SRS8-12-01	3/4 (19.1)
SRS4-14-01	SRS6-14-01	SRS8-14-01	7/8 (22.2)
SRS4-16-01	SRS6-16-01	SRS8-16-01	1 (25.4)



SERIES NO.	"B"	"C"	MOUNTING HOLE DIA. ±.003 (0.08)
SRS4	1/4 (6.3)	.125 (3.1)	.187 (4.7)
SRS6	9/32 (7.1)	.153 (3.9)	.234 (5.9)
SRS8	9/32 (7.1)	.169 (4.3)	.234 (5.9)

NOTES:

- MATERIAL: NYLON 66 (RMS-01), NATURAL.
FLAME RETARDANT, NYLON (RMS-19), NATURAL.
BY SPECIAL ORDER ONLY.
- HEAT RESISTANT NYLON (RMS-109), NATURAL.
BY SPECIAL ORDER ONLY.

E	SEE ECN #783 FOR CHANGES	SM 04.13.04
D	ADDED RMS-109 & CHANGED FILE NO.	S.M. 05.17.01
C	MAT'L (RMS-19) ADDED	J.L. 12.10.97
B	ADDED -20,24,28&32 PART NUMBERS	R.T. 05.12.97
A	-7 ADDED TO PART NUMBERS	J.B. 06.11.96
REV	DESCRIPTION	ENGR DATE

TITLE: SELF RETAINING SPACERS



DWG IN
IN(mm)

FINAL

TOLERANCES UNLESS NOTED .XX=±.010 .XXX=±.005 FRAC=1/64 ANG=1°	FILE # SRS	DWN: J.B.	APP:	PART # SEE TABLE	PRINT TYPE CA
	MAT'L: SEE NOTES	DT: 05-12-97	DT:		
	RE: RICHCO, INC.	RICHCO INC. PO BOX 804238, CHICAGO, 60680 (773) 539-4060			