

Part Number

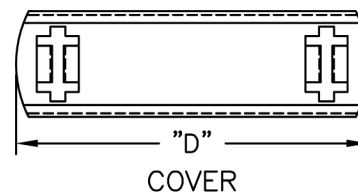
Description

[FCRC-13C](#)

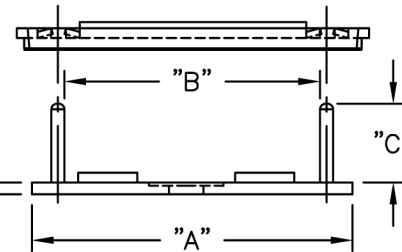
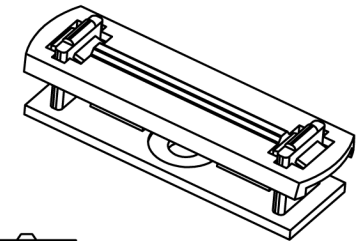
Clamp,Cvr,Natural,1.62" Max Wd



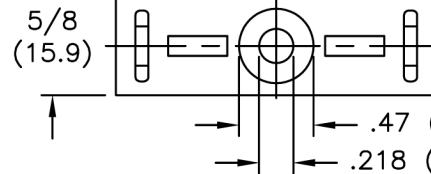
| BASE PART NO. | "A" REF. | "B" REF. | "C" | COVER PART NO. | "D" REF. |
|---------------|-------------|-------------|------------|----------------|-------------|
| FCRC-13B-4-01 | 2.04 (51.7) | 1.62 (41.2) | 1/2 (12.7) | FCRC-13C | 2.24 (56.8) |
| FCRC-13B-6-01 | | | 3/4 (19.1) | | |
| FCRC-19B-4-01 | 2.72 (69.1) | 2.31 (58.7) | 1/2 (12.7) | FCRC-19C | 2.92 (74.2) |
| FCRC-19B-6-01 | | | 3/4 (19.1) | | |
| FCRC-21B-4-01 | 2.98 (75.7) | 2.55 (64.8) | 1/2 (12.7) | FCRC-21C | 3.17 (80.5) |
| FCRC-21B-6-01 | | | 3/4 (19.1) | | |
| FCRC-26B-4-01 | 3.66 (93.0) | 3.24 (82.3) | 1/2 (12.7) | FCRC-26C | 3.86 (98.0) |
| FCRC-26B-6-01 | | | 3/4 (19.1) | | |



COVER



.075±.010
(1.9±0.25)



BASE

NOTES:

- MATERIAL: NYLON 6/6 (RMS-01).
FLAME RETARDANT NYLON (RMS-19),
AVAILABLE BY SPECIAL ORDER ONLY.
- COLOR: NATURAL.
- TAPE:
1/32 (0.8) THICK, ACRYLIC ADHESIVE TAPE
(RMS-15), WHITE LINER,
AVAILABLE BY SPECIAL ORDER ONLY.
TO ORDER, SPECIFY A-RT AS SUFFIX.
1/32 (0.8) THICK, RUBBER ADHESIVE TAPE
(RMS-102), BLUE LINER,
AVAILABLE BY SPECIAL ORDER ONLY.
TO ORDER, SPECIFY A1-RT AS SUFFIX.

| TITLE: FLAT CABLE ROUTING CLAMP | | | | DWG IN IN (MM) | FINAL | PRINT TYPE |
|---|------------------|--------------|------|----------------|-------|------------|
| TOLERANCES UNLESS NOTED .XX=±.010 .XXX=±.005 FRAC=±1/64 ANG=±1° | FILE # FCRC | DWN: SM | APP: | PART # | | CA |
| MAT'L: SEE NOTES | RE: RICHCO, INC. | DT: 03/05/02 | DT: | SEE TABLE | | |
| | | | | | | |

| REV | DESCRIPTION | ENGR | DATE |
|-----|-----------------------------|------|----------|
| E | COMPLETELY RE-DRAWN | SM | 03.05.02 |
| - | SEE ENGINEERING FOR REV A-D | - | - |