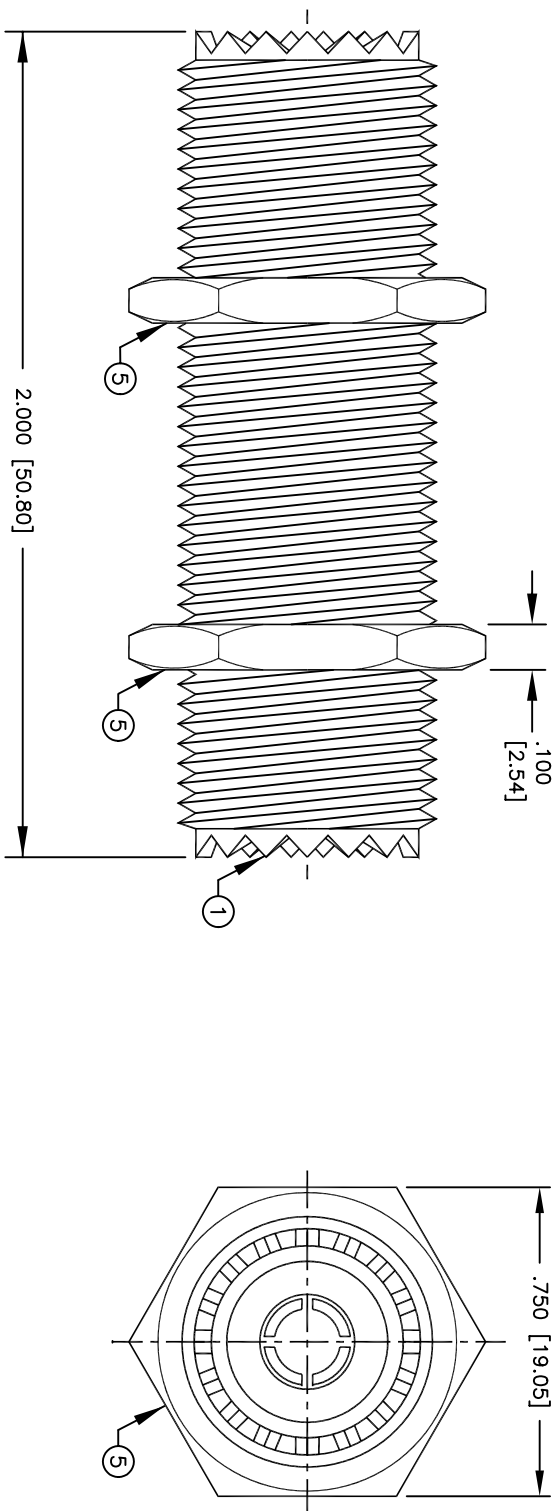


# SPECIFICATION CONTROL DRAWING

THIS DRAWING CONTAINS INFORMATION PROPRIETARY TO RF INDUSTRIES, LTD. ANY UNAUTHORIZED USE OF THIS DRAWING IS EXPRESSLY PROHIBITED. ANY VIOLATION IS PUNISHABLE UNDER U.S. COPYRIGHT LAWS.

ALL DIMENSIONS ARE REFERENCE ONLY

REV	DESCRIPTION	DWN	DATE	APPROVED
C1	HEX NUT CHANGE \ RPLS DWG #7466	DM	12/21/92	J. BENZ
D1	UPDATE DRAWING \ RPLS DWG #7850	PB	4/19/93	J. BENZ
E	CHANGE DIELECTRIC CONFIGURATION	PB	7/13/93	K.HARTMANN
F	ADD RETAINING RING NOTE \ STANDARDIZE	KMM	2/21/95	R. RICE



## SPECIFICATIONS:

IMPEDANCE: NON CONSTANT  
 WORKING VOLTAGE: 500 VRMS @ SEA LEVEL  
 FREQUENCY RANGE: 0-300 MHZ

ITEM	DESCRIPTION	QTY	MATERIAL	FINISH
5	HEX NUT	2	BRASS	NICKEL
4	RETAINING RING	1	BRASS	NICKEL
3	DIELECTRIC	2	* DELRIN	NONE
2	CONTACT	1	BRASS	SILVER
1	BODY	1	BRASS	NICKEL

DIMENSIONS ARE IN INCHES AND [MILLIMETERS] UNLESS OTHERWISE NOTED TOLERANCES ARE: DECIMALS DIAMETER

DRAWN K. MAXWELL	2/21/95
CHECKED	
ORJ DRAWN C. JONES	10/24/91
APPROVALS	DATE

**RF connectors**  
 DIVISION OF RF INDUSTRIES, LTD.  
 7610 MIRAMAR RD  
 SAN DIEGO, CA 92126  
 (619)549-6340  
 (619)549-6345 FAX

**RFU-537 \ UG-363/U**

UHF DOUBLE FEMALE BARREL BULKHEAD ADAPTER

SIZE A	CABLE GROUP N/A	DWG NO. 8093	REV F
SCALE: 2:1	CAD FILE 13ARC B	SHEET 1	OF 1