

**Specification Status: Released**

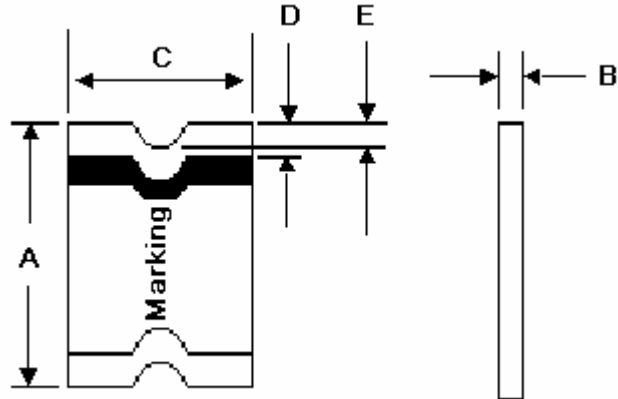
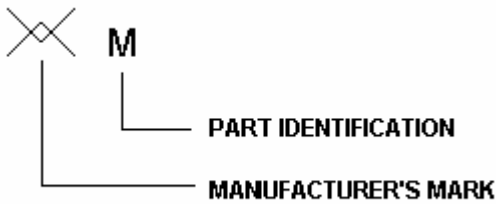
**Maximum Electrical Rating**

**Voltage: 13.2V<sub>DC</sub> MAX**  
**Short Circuit Current: 100A**

Notes:

1. All terminations are tin plated.
2. Drawing not to scale

Marking:



**TABLE I. DIMENSIONS:**

|     | A       |         | B       |         | C       |         | D       |         | E       |
|-----|---------|---------|---------|---------|---------|---------|---------|---------|---------|
|     | MIN     | MAX     | MIN     | MAX     | MIN     | MAX     | MIN     | MAX     | MIN     |
| mm: | 3.00    | 3.40    | 0.38    | 0.64    | 1.37    | 1.80    | 0.25    | 0.75    | 0.076   |
| in: | (0.118) | (0.134) | (0.015) | (0.025) | (0.054) | (0.071) | (0.010) | (0.030) | (0.003) |

**TABLE II. PERFORMANCE RATINGS:**

| CURRENT RATINGS** |      |                 |      |                 |      | TIME TO TRIP**            | RESISTANCE VALUES |      | TRIPPED-STATE POWER DISSIPATION** |
|-------------------|------|-----------------|------|-----------------|------|---------------------------|-------------------|------|-----------------------------------|
| AMPERES AT 0°C    |      | AMPERES AT 25°C |      | AMPERES AT 60°C |      | SECONDS AT 25°C, 8.0A MAX | OHMS AT 25°C      |      | WATTS AT 25°C, 13.2V MAX          |
| HOLD              | TRIP | HOLD            | TRIP | HOLD            | TRIP |                           | MIN               | MAX* |                                   |
| 0.61              | 1.24 | 0.50            | 1.10 | 0.35            | 0.75 | 0.1                       | 0.20              | 0.80 | 0.8                               |

\*Maximum resistance is measured 1 hour after reflow.

\*\* Values specified were determined using PCB's with 0.030"X1.5 ounce copper traces.

Agency Recognitions:  
Reference Documents:  
Precedence:  
Effectivity:  
CAUTION:

UL, CSA, TÜV  
PS300  
This specification takes precedence over documents referenced herein.  
Reference documents shall be the issue in effect on the date of invitation for bid.  
Operation beyond the rated voltage or current may result in rupture, electrical arcing or flam

**Materials Information**

ROHS Compliant

Directive 2002/95/EC  
Compliant

ELV Compliant

Directive 2000/53/EC  
Compliant

Pb-Free

