

6

5

4

3

2

1

MATERIAL AND FINISH:

Housing: PA6T
 Center pin: Copper, Nickel plated
 Terminals:
 1. Brass, Silver plated
 2. Copper alloy, Silver plated
 3. Brass, Silver plated

MECHANICAL SPECIFICATIONS:

Insertion force: 0.3kg - 3kg
 Extraction Force: 0.3kg - 3kg
 Durability: 5000 cycles @ 24 cycles per minute

ELECTRICAL SPECIFICATIONS:

Rated current: 5A
 Rated voltage: 24VDC
 Insulation resistance: 100 Mohm min. @ 500VDC
 Dielectric withstanding voltage: 500V rms 50/60 Hz for one minute
 Contact resistance: 30 mohm max.

ENVIRONMENTAL:

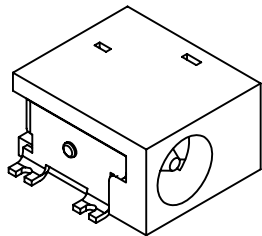
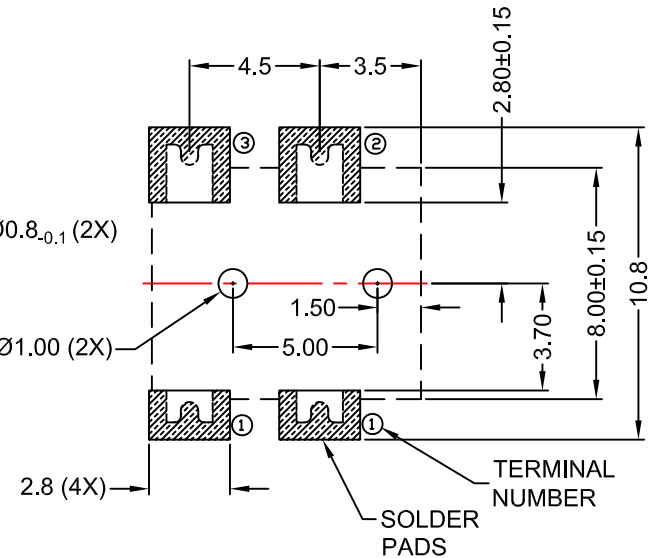
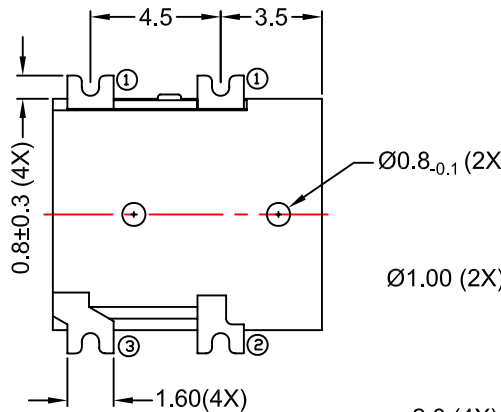
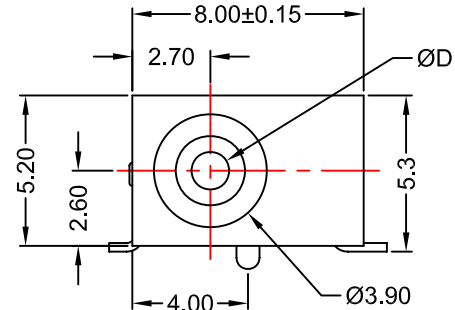
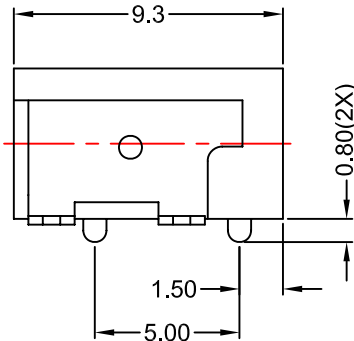
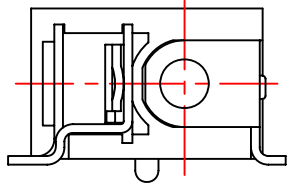
Operating temperature: -25°C ~ +85°C

SOLDERABILITY:

Reflow Soldering:
 Solder temperature: 260°C±5°C
 Soldering time over 255°C: 20 seconds

PACKAGING:

Tape & reel: 800 pcs/reel



ORDERING CODE:

SW2156H- -R
 1

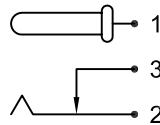
1) CENTER PIN DIAMETER (ØD)

1 = 1.0mm
 2 = 1.3mm

2) PACKAGING

R = Tape & Reel

SCHEMATIC



TOLERANCE
 UNLESS OTHERWISE SPECIFIED
 X ± 1
 X.X ± 0.4
 X.XX ± 0.13

DRAWN BY	PB	DATE:	10/28/11
CHECK BY		DATE:	
APPR BY		DATE:	

Power Dynamics, Inc.

Phone: 973 560-0019 Whippany, New Jersey Fax: 973 560-0076

PART: DC POWER JACK; HIGH CURRENT
 1.0mm OR 1.3mm DIAMETER CENTER PIN; SMT

PART #: SW2156H-X-R		SHEET 1 of 1
SIZE: A	ALL DIMENSIONS FOR REFERENCE ONLY DIMENSIONS ARE IN MILLIMETERS	REV:
SCALE: NTS		

RoHS COMPLIANT

D

D

C

C

B

B

A

A

6

5

4

3

2

1

REV	DATE	CHANGE	CHNG CHECK APPR

REVISIONS