

6

5

4

3

2

1

MATERIAL AND FINISH

Shell: steel, tin plated over copper.

Pin contact: Brass, Gold Plating (see chart) over 40µin
base Nickel in contact area, tin on tails.

Insulator: PBT & glass filled reinforced, UL 94V-0 rated.

MECHANICAL SPECIFICATIONS:

MATING FORCE	9 PIN	15 PIN	25 PIN	37 PIN
MAX	4.8 KG	7.7 KG	12.7 KG	17.7 KG
UNMATING FORCE	9 PIN	15 PIN	25 PIN	37 PIN
MIN	0.4 KG	0.5 KG	0.8 KG	1.2 KG

SOLDERABILITY:

Solder temp: 245°C±5°C

Solder Time: 3sec±0.5sec

ELECTRICAL SPECIFICATIONS:

Rated current: 3A

Rated voltage: 250VDC

Insulation resistance: 3000 Mohm min @ 500VDC

Dielectric withstanding voltage: 1000VAC / 1 MIN.

Contact resistance: 15 mohm

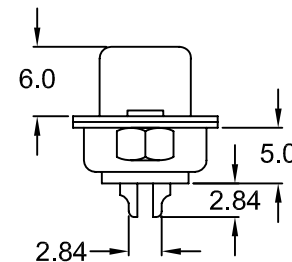
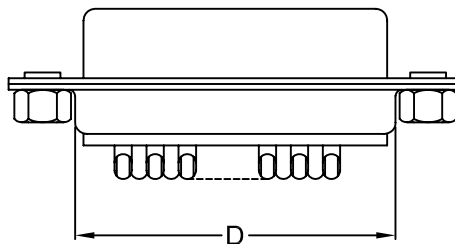
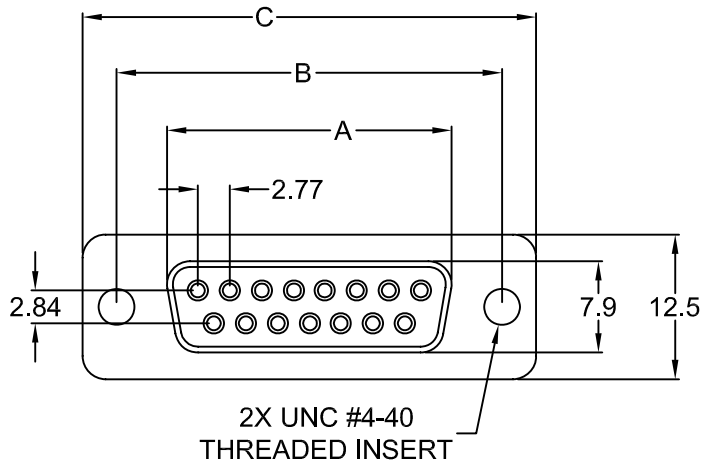
ENVIRONMENTAL:

Operating temperature: -55°C to +105°C

NOTES:

1. Replace first XX in P/N with number of positions
2. Recommended maximum wire gauge is 22AWG

POSITION	A	B	C	D
9	16.30	25.00	30.8	19.2
15	24.60	33.30	39.2	27.7
25	38.30	47.10	53.1	41.1
37	54.80	63.50	69.4	57.3



P/N	PLATING
PDI-XXRS-S	GOLD FLASH
PDI-XXRS-S-G10	10µ"
PDI-XXRS-S-G15	15µ"
PDI-XXRS-S-G30	30µ"

TOLERANCE UNLESS OTHERWISE SPECIFIED	
X	± 1
X.X	± 0.4
X.XX	± 0.20

DRAWN BY	DT	DATE:	3/20/02
CHECK BY	PB	DATE:	3/22/02
APPR BY		DATE:	

Power Dynamics, Inc.

Phone: 973 560-0019 Whippany, New Jersey Fax: 973 560-0076

PART: 9~37 PIN FEMALE D-SUB,
SOLDER CUP

PART #: PDI-XXRS-S-X

SIZE: A
SCALE: NTS

ALL DIMENSIONS FOR REFERENCE ONLY
DIMENSIONS ARE IN MILLIMETERS

SHEET
1 of 1
REV:

REV	DATE	CHANGE	CHKG	CHKD	APPR

6

5

4

3

2

1