

MATERIAL AND FINISH

Insulator: Polycarbonate, UL-94V-0 rated
Contacts: Brass, Nickel plated

ELECTRICAL SPECIFICATIONS:

Current rating: 10 A
Voltage rating: 250 VAC
Insulation resistance: 100 Mohm min. at 500 VDC
Dielectric withstanding voltage: 2000 VAC for one minute

ORDERING CODE:

42R39-3 5 - 3
1 2 3

- 1) COLOR
1 = BLACK
2 = GRAY

2) ELECTRICAL CIRCUIT CONFIGURATION

3 = 10A 250V 70°C
2+GROUND, 1 FUSE
2 POLE SWITCH

4 = 10A 250V 70°C
2+GROUND, 2 FUSE
2 POLE SWITCH

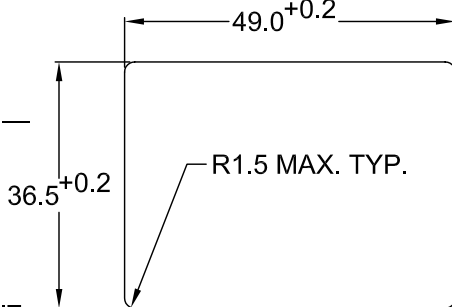
7 = 10A 250V 120°C
2+GROUND, 1 FUSE
2 POLE SWITCH

8 = 10A 250V 120°C
2+GROUND, 2 FUSE
2 POLE SWITCH

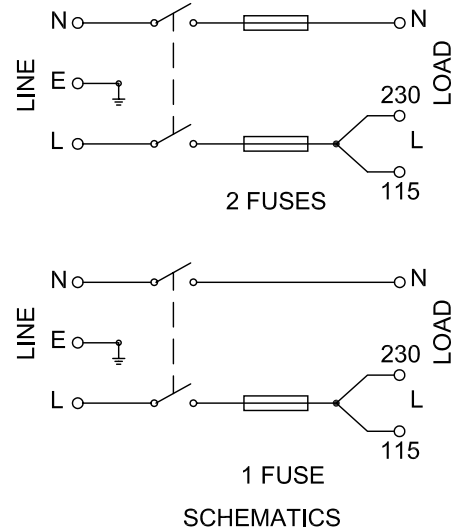
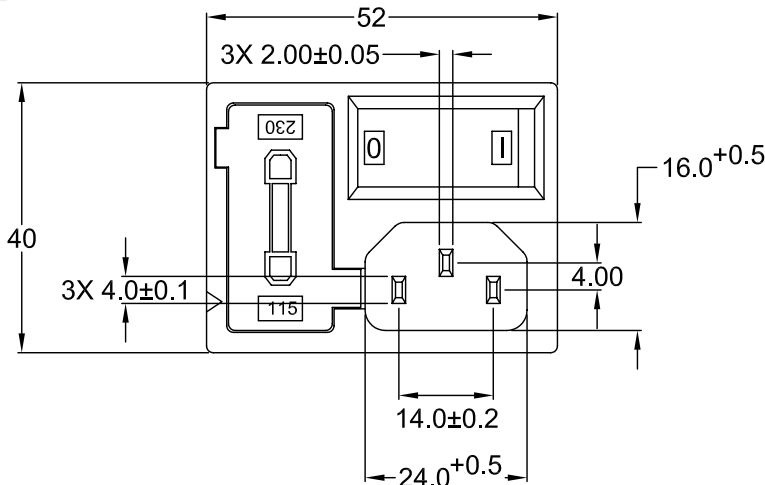
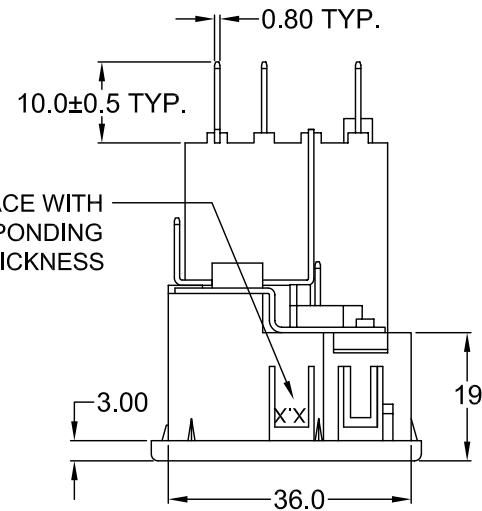
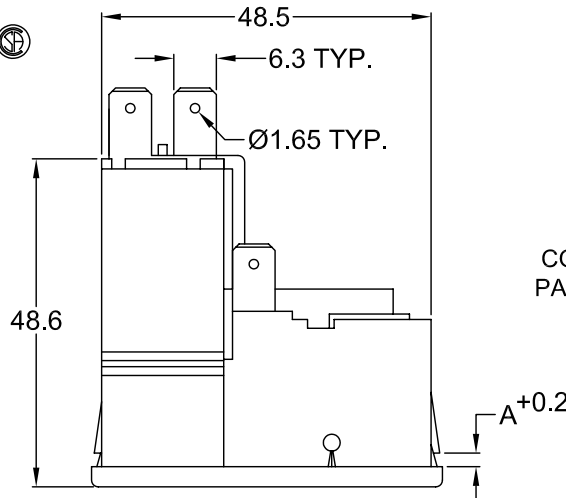
11 = 10A 250V 70°C
2 POLE, 1 FUSE
2 POLE SWITCH

12 = 10A 250V 70°C
2 POLE, 2 FUSE
2 POLE SWITCH

3) PANEL THICKNESS



RECOMMENDED PANEL CUTOUT



SCHEMATICS

REV	DATE	CHANGE	CHK	CHK	APPR

P/N	A	MAX. PANEL THICKNESS
42R39-3X5X-150	1.5	1.5
42R39-3X5X-200	2.0	2.0

ADDITIONAL PANEL THICKNESS, ONE POLE SWITCH, AND .187 QC TERMINALS AVAILABLE ON REQUEST

TOLERANCE UNLESS OTHERWISE SPECIFIED	
X	± 1
X.X	± 0.4
X.XX	± 0.20
DRAWN BY	GQ
CHECK BY	TD
DATE:	09/24/01
DATE:	09/26/01
DATE:	09/26/01

Power Dynamics, Inc.

Phone: 973 560-0019 Whippany, New Jersey Fax: 973 560-0076

PART: IEC 60320 APPL. INLET, VOLTAGE SELECTOR FUSE HOLDER; QC TERMINALS; SNAP-IN

PART #: 42R39-3X5X-XXX SHEET 1 of 1

SIZE: A ALL DIMENSIONS FOR REFERENCE ONLY DIMENSIONS ARE IN MILLIMETERS REV: