

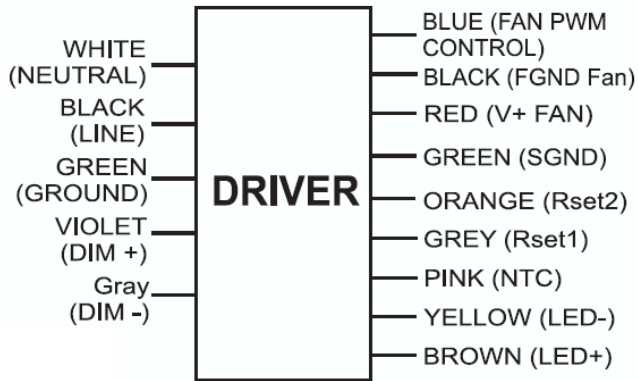
XV050C100V054DPM1

Electrical Specifications

Brand Name	XITANIUM
Description	50W SM 0.3-1A 54V 0-10V 277V
Input Voltage	277V
Input Frequency	60Hz
RoHS	Yes
Status	Active

Output Power (W)	Output Voltage (V)	Output Current (A)	Efficiency@ Max Load	Max Case Temp. (°C)	Input Current	Max. Input Power (W)	Inrush Current (A _{in} /50%- μ s)		THD @ Max Load (%)	Power Factor @ Max Load	Surge Protection Common/Diff (KV)	Weight (Lbs/kgs)	Envir. Protection Rating
50	27 ~ 54	0.3-1.0	88%	75 °C	0.2A	57	277 Vin	7.4/ 600	<20	>0.9	1.5/1.5	0.71/ 0.322	UL Dry & Damp

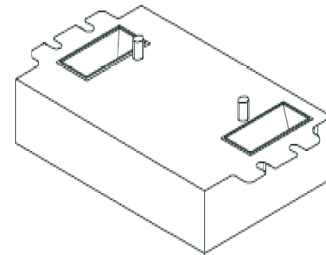
Wire Diagram



Input and output use lead-wires.
Lead-wires are 18AWG 105C/600V solid copper.

Dimming Method	Dimming Range	Minimum Output Current (A)	Other Comments
0-10V Isolated	10% ~ 100%	0.030	Dimming source current: 150 μ A

Enclosure



	in. (mm)
Case Length	4.21 (107)
Case Width	2.99 (76)
Case Height	1.29 (33)
Mounting Length	4.96 (126)
Mounting Width	2.99 (76)



Revised 04/03/2012

PHILIPS LIGHTING ELECTRONICS N.A.

10275 WEST HIGGINS ROAD · ROSEMONT, IL 60018
Tel: 800-322-2086 · Fax: 888-423-1882 · www.philips.com/advance
Customer Support/Technical Service: 800-372-3331 · OEM Support: 866-915-5886



Electrical Specifications

XV050C100V054DPM1	
Brand Name	XITANIUM
Description	50W SM 0.3-1A 54V 0-10V 277V
Input Voltage	277V
Input Frequency	60Hz
RoHS	Yes
Status	Active

Product Data	
Order code	XV050C100V054DPM1
Full product code	XV050C100V054DPM1
Full product name	Xitanium 50W SM 0.3-1A 54V 0-10V 277V
Net weight per piece	0.322 KG / 0.71lbs
Interfaces	0-10V / Phase cut Dimming
Ambient Temp Range	-20C to +50C
Corresponding Tcase	-15C to +75C
Line Voltage	277V
Line Current	0.22A @ 277V
Line Frequency	60Hz
Envir. Protection Rating	UL Dry & Damp
EMI	FCC47 part 15 class A
Life @ TC 75 C	50000 hr
Suitable for Outdoor use?	NO
Max TC	75C
Inrush current Width	Refer to table
Min ballast number on MCB 16A type B	26
Input Over-voltage	Can survive input over-voltage stress of 320VAC for 48 hours and 350VAC for 2 hours
LED Current Tolerance	+/- 50mA
Earth leakage current	0.7 mA [max]
Mains voltage safety (AC)	+/-10%
Mains voltage performance (AC)	+/-10%
Min. Mains voltage operational	254 V [min]
Output peak voltage	60V [max]
Output Current ripple	20% @ 1000 mA (ripple = pk-pk/avg)
THD total	< 20% @ max load
PF @ Max Load	>0.90
Protections	Short Circuit and Open Circuit Protection for LED + and LED-
Connector (input/output)	Wago 250 / Wago 744

Revised 04/03/2012

PHILIPS LIGHTING ELECTRONICS N.A.
10275 WEST HIGGINS ROAD · ROSEMONT, IL 60018
Tel: 800-322-2086 · Fax: 888-423-1882 · www.philips.com/advance
Customer Support/Technical Service: 800-372-3331 · OEM Support: 866-915-5886



XV050C100V054DPM1

Brand Name	XITANIUM
Description	50W SM 0.3-1A 54V 0-10V 277V
Input Voltage	277V
Input Frequency	60Hz
RoHS	Yes
Status	Active

Electrical Specifications

Installation & Application Notes:

Section I – Physical Characteristics

- 1.1 LED Driver shall be installed inside an electrical enclosure
- 1.2 Wiring inside electrical enclosure shall comply with 600V/105°C rating or higher.

Section II – Performance

- 2.1 LED Driver has a rated lifetime of 50,000 hours @ TC <=75C.
- 2.2 LED Driver tolerates sustained open circuit and short circuit output conditions without damage.
- 2.3 LED Driver maximum allowable case temperature is 75°C – see product label for measurement location.
- 2.4 LED Driver complies with the requirements of UL, CSA, FCC47 subpart 15 Class A.

Conditions of Acceptability (File E321253)

When installed in the end product, consideration shall be given to the following:

- 3.1 The maximum available output parameters of the driver met the limitation for Class 2 Inherently limited as specified Table 30.1 of the UL 1310 standard for Class 2 Power Units.
- 3.2 Primary wiring to be 18-AWG-Solid-Copper wire, rated 300V minimum, 105° and stripped wire 3/8 in prior to inserting into primary terminal blocks.
- 3.3 The primary and secondary terminal blocks are R/C (XCFR2/8) suitable for field wiring.
- 3.4 The LED Driver is suitable for use in “Dry” and “Damp” Locations.
- 3.5 The driver enclosure temperature in the end-use application should not exceed 75°C at the (Tc) location specified on the marking label.
- 3.6 The enclosure must be connected to earth ground in the end-use application.
- 3.7 The need for a leakage current test must be determined in the end-use product. However, the maximum measured enclosure leakage current from the case using Simpson model 228 leakage current meter were as follows:

Model Test	Voltage Measured	Leakage, MIU
XR050C100V054XPM1	120	0.12
XV050C100V054DPM1	277	0.28

- 3.8 The output designated “Fan Output” is isolated and the maximum available parameters met the limits for LVLE circuit specified in the UL 8750 standard.
- 3.9 The maximum available output parameters from the (0-10 V) dimming circuit provided on LED driver met the limitations for Class 2 Inherently Limited per the UL 1310 standard.
- 3.10 The maximum output of these drivers is 54 VDC and is suitable for Class 2 wiring per the Canadian Electrical code, Section 16. However, the outputs and the associated circuitry cannot be user accessible when the drivers are installed in the end-use product based on maximum voltage restrictions

Revised 04/03/2012

PHILIPS LIGHTING ELECTRONICS N.A.

10275 WEST HIGGINS ROAD · ROSEMONT, IL 60018

Tel: 800-322-2086 · Fax: 888-423-1882 · www.philips.com/advance

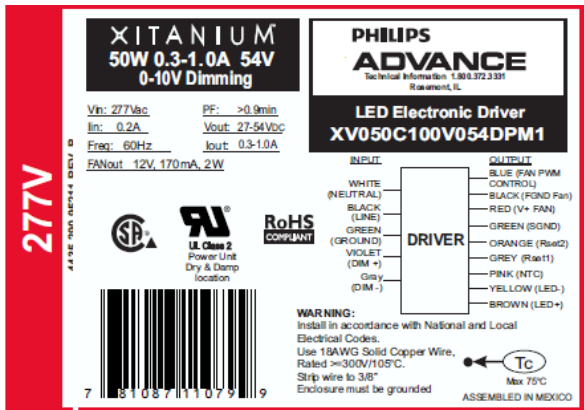
Customer Support/Technical Service: 800-372-3331 · OEM Support: 866-915-5886

PHILIPS

XV050C100V054DPM1	
Brand Name	XITANIUM
Description	50W SM 0.3-1A 54V 0-10V 277V
Input Voltage	277V
Input Frequency	60Hz
RoHS	Yes
Status	Active

Electrical Specifications

Label



Operating window



Revised 04/03/2012

PHILIPS LIGHTING ELECTRONICS N.A.
 10275 WEST HIGGINS ROAD · ROSEMONT, IL 60018
 Tel: 800-322-2086 · Fax: 888-423-1882 · www.philips.com/advance
 Customer Support/Technical Service: 800-372-3331 · OEM Support: 866-915-5886



XV050C100V054DPM1

Brand Name	XITANIUM
Description	50W SM 0.3-1A 54V 0-10V 277V
Input Voltage	277V
Input Frequency	60Hz
RoHS	Yes
Status	Active

Electrical Specifications

1.1 Rset2 table (Valid Range of Current 0.3-1.0A)

Rset [Ω]	Iset [mA]	Rset [Ω]	Iset [mA]
0	100	2200	779.7414
100	100	2400	823.4195
110	105.4598	2700	883.477
120	110.9195	3000	940.8046
130	116.3793	3300	992.6724
150	124.569	3600	1041.81
160	130.0287	3900	1085.489
180	138.2184	4300	1142.816
200	146.408	4700	1191.954
220	154.5977	5100	1238.362
240	165.5172	5600	1292.96
270	176.4368	6200	1350.287
300	190.0862	6800	1402.155
330	203.7356	7500	1454.023
360	214.6552	8200	1503.161
390	228.3046	9100	1557.759
430	244.6839	10000	1604.167
470	261.0632	11000	1653.305
510	277.4425	12000	1694.253
560	296.5517	13000	1729.741
620	318.3908	15000	1792.529
680	340.2299	16000	1817.098
750	367.5287	18000	1863.506
820	392.0977	20000	1901.724
910	422.1264	22000	1934.483
1000	452.1552	24000	1964.511
1100	484.9138	27000	2000
1200	514.9425	>100000	700
1300	544.9713		
1500	602.2989		
1600	632.3276		
1800	684.1954		
2000	733.3333		

Revised 04/03/2012

PHILIPS LIGHTING ELECTRONICS N.A.

10275 WEST HIGGINS ROAD · ROSEMONT, IL 60018

Tel: 800-322-2086 · Fax: 888-423-1882 · www.philips.com/advance

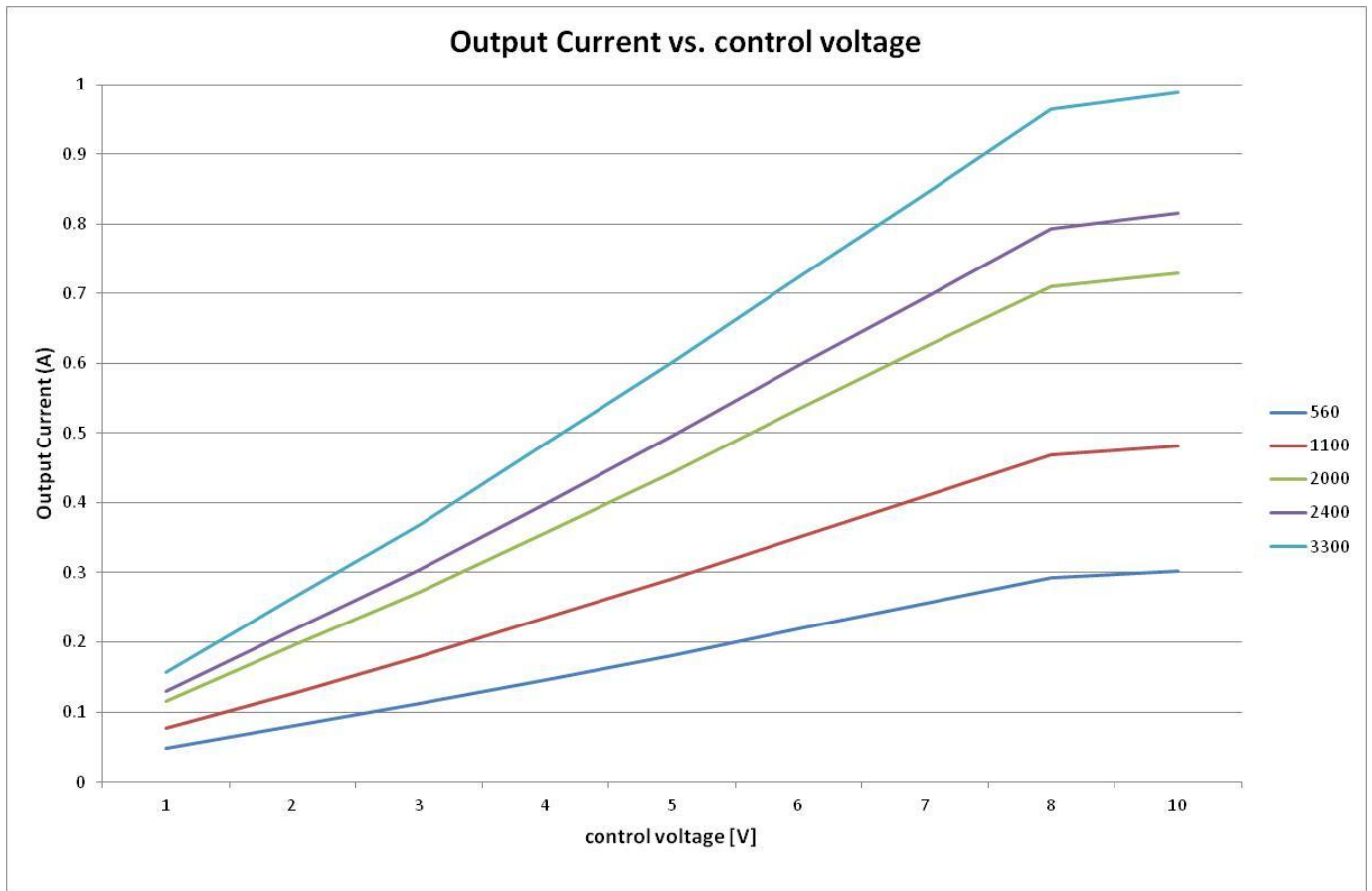
Customer Support/Technical Service: 800-372-3331 · OEM Support: 866-915-5886



XV050C100V054DPM1	
Brand Name	XITANIUM
Description	50W SM 0.3-1A 54V 0-10V 277V
Input Voltage	277V
Input Frequency	60Hz
RoHS	Yes
Status	Active

Electrical Specifications

Output current vs. control voltage vs. Rset2 @ Vmains =277V.



Revised 04/03/2012

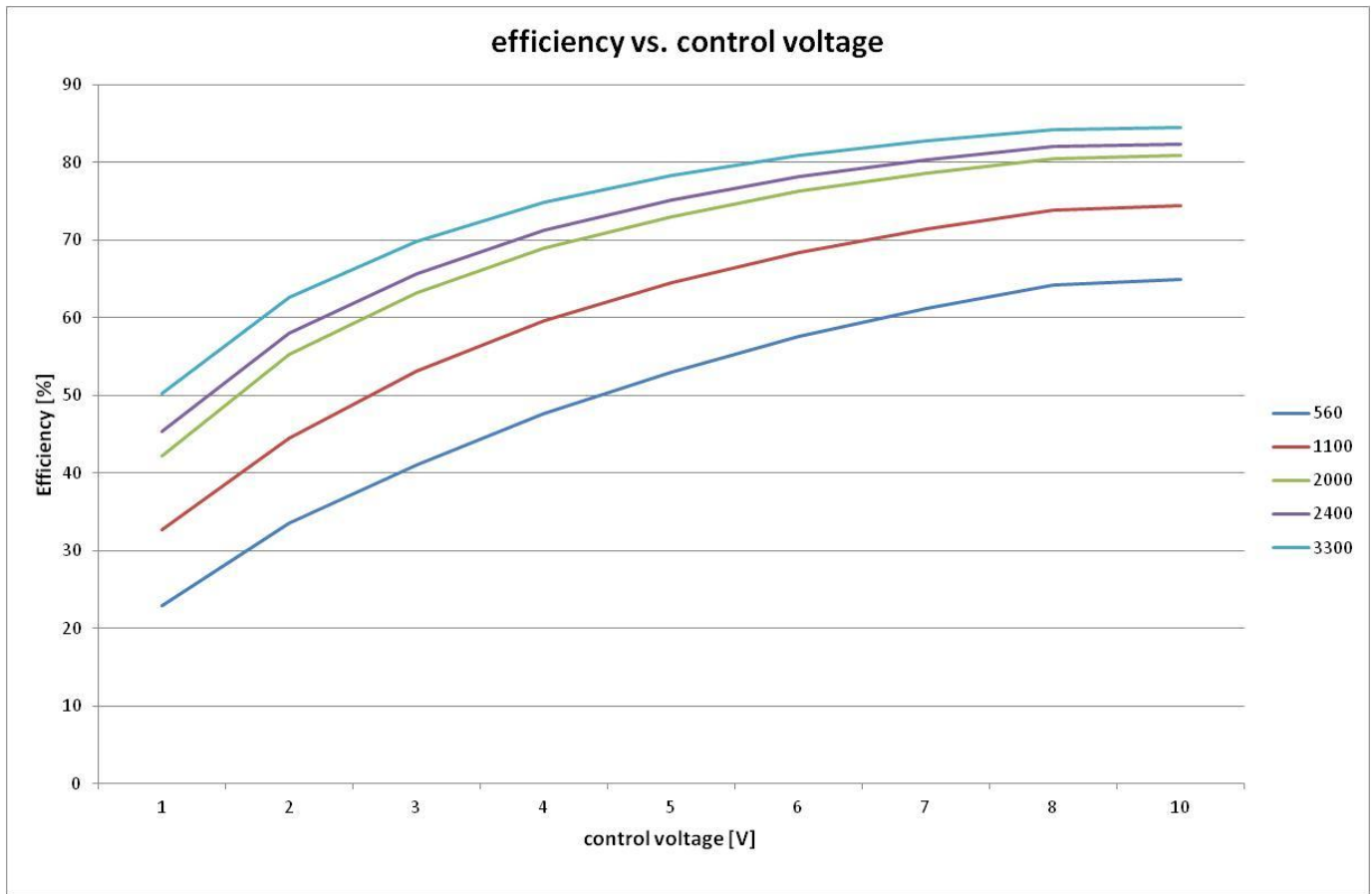
PHILIPS LIGHTING ELECTRONICS N.A.
10275 WEST HIGGINS ROAD · ROSEMONT, IL 60018
Tel: 800-322-2086 · Fax: 888-423-1882 · www.philips.com/advance
Customer Support/Technical Service: 800-372-3331 · OEM Support: 866-915-5886



XV050C100V054DPM1	
Brand Name	XITANIUM
Description	50W SM 0.3-1A 54V 0-10V 277V
Input Voltage	277V
Input Frequency	60Hz
RoHS	Yes
Status	Active

Electrical Specifications

Efficiency vs. control voltage vs. Rset2 @ Vmains =277V.



Revised 04/03/2012

PHILIPS LIGHTING ELECTRONICS N.A.
10275 WEST HIGGINS ROAD · ROSEMONT, IL 60018
Tel: 800-322-2086 · Fax: 888-423-1882 · www.philips.com/advance
Customer Support/Technical Service: 800-372-3331 · OEM Support: 866-915-5886

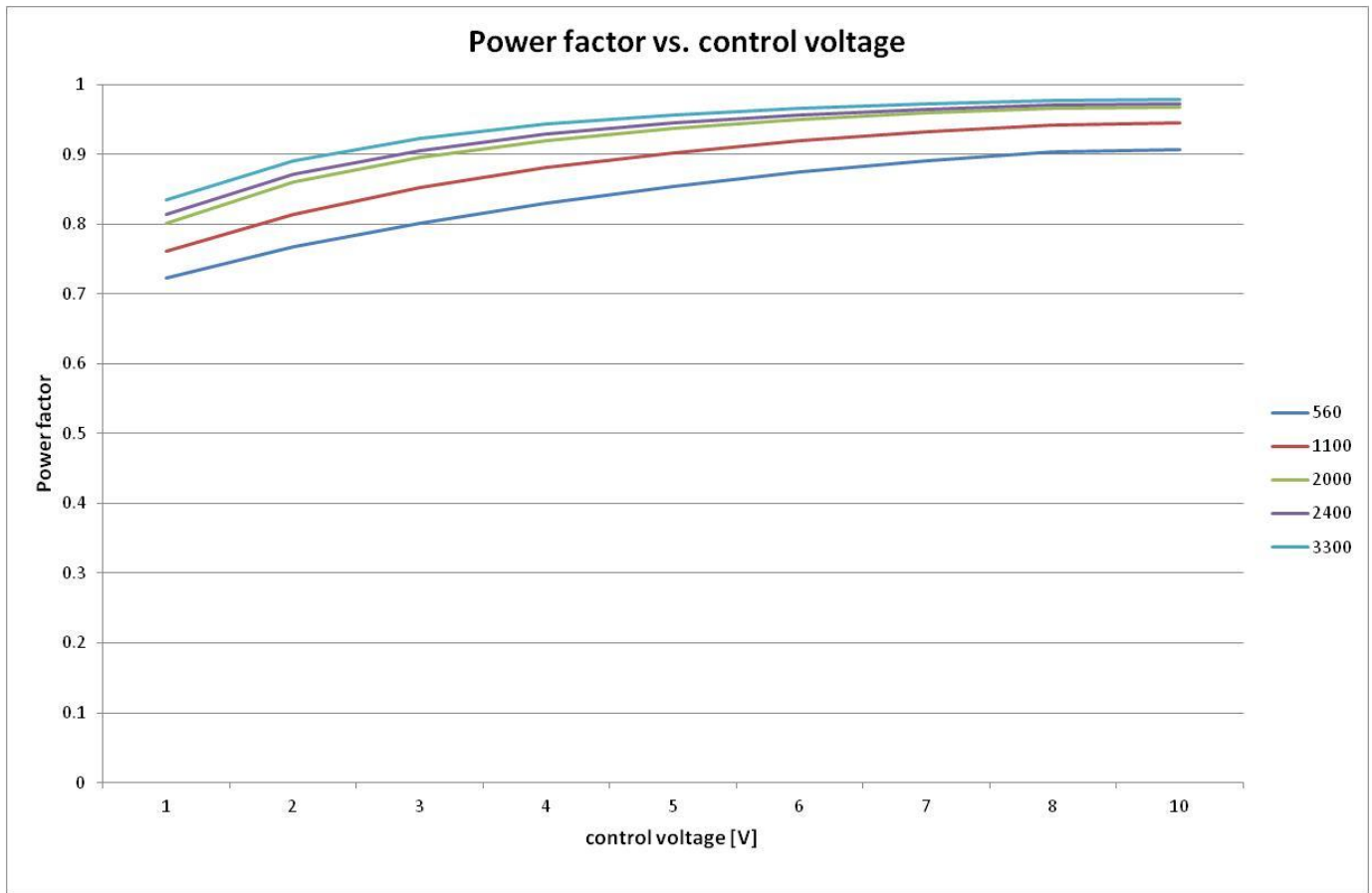


XV050C100V054DPM1

Brand Name	XITANIUM
Description	50W SM 0.3-1A 54V 0-10V 277V
Input Voltage	277V
Input Frequency	60Hz
RoHS	Yes
Status	Active

Electrical Specifications

Power factor vs. control voltage vs. Rset2 @ Vmains = 277V.



Revised 04/03/2012

PHILIPS LIGHTING ELECTRONICS N.A.
10275 WEST HIGGINS ROAD · ROSEMONT, IL 60018
Tel: 800-322-2086 · Fax: 888-423-1882 · www.philips.com/advance
Customer Support/Technical Service: 800-372-3331 · OEM Support: 866-915-5886

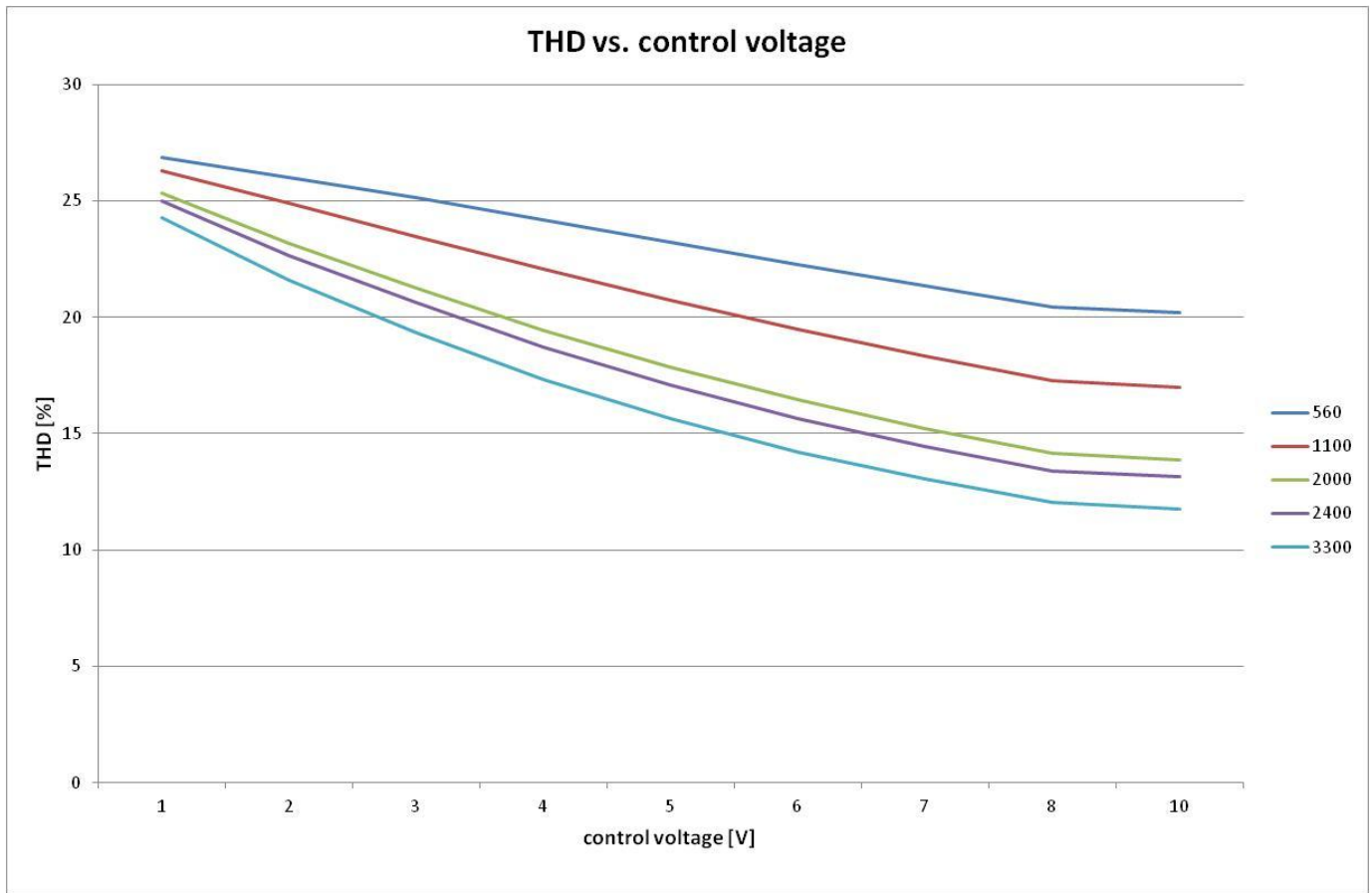


XV050C100V054DPM1

Brand Name	XITANIUM
Description	50W SM 0.3-1A 54V 0-10V 277V
Input Voltage	277V
Input Frequency	60Hz
RoHS	Yes
Status	Active

Electrical Specifications

THD vs. control voltage vs. Rset2 @ Vmains =277V.



Revised 04/03/2012

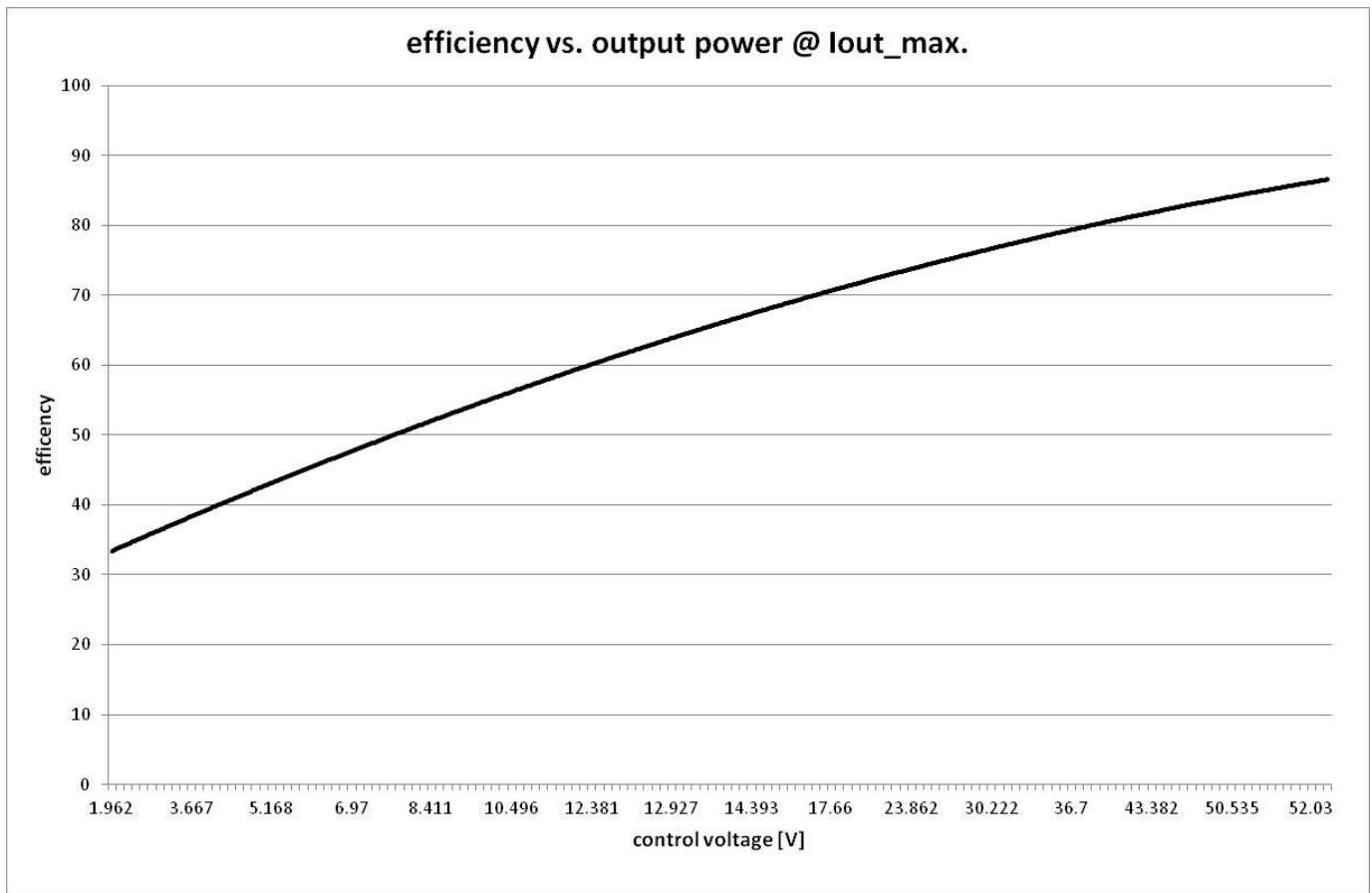
PHILIPS LIGHTING ELECTRONICS N.A.
10275 WEST HIGGINS ROAD · ROSEMONT, IL 60018
Tel: 800-322-2086 · Fax: 888-423-1882 · www.philips.com/advance
Customer Support/Technical Service: 800-372-3331 · OEM Support: 866-915-5886

XV050C100V054DPM1

Brand Name	XITANIUM
Description	50W SM 0.3-1A 54V 0-10V 277V
Input Voltage	277V
Input Frequency	60Hz
RoHS	Yes
Status	Active

Electrical Specifications

Overall efficiency vs. output power



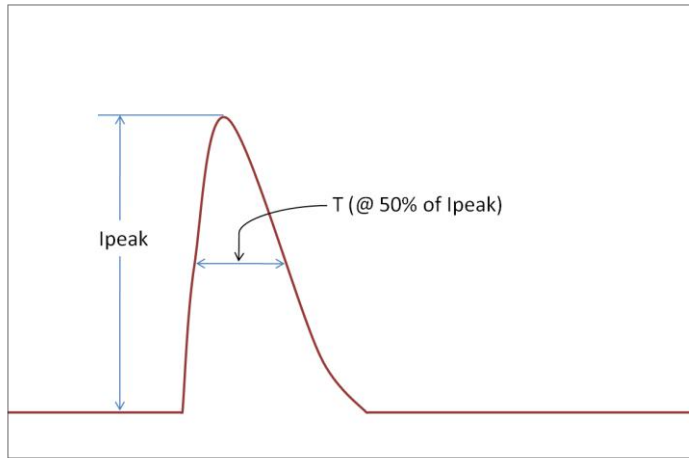
Revised 04/03/2012

XV050C100V054DPM1

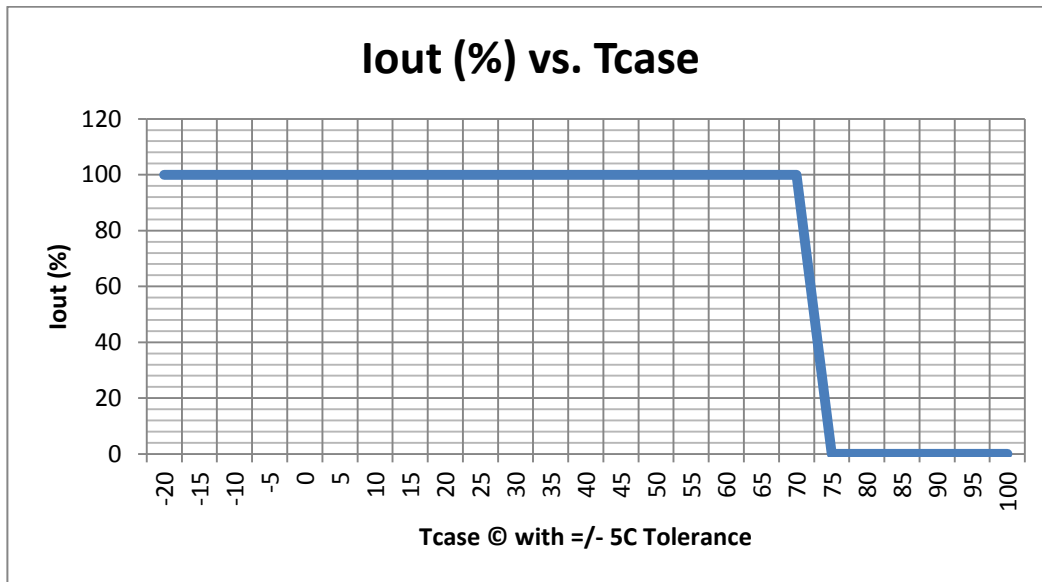
Brand Name	XITANIUM
Description	50W SM 0.3-1A 54V 0-10V 277V
Input Voltage	277V
Input Frequency	60Hz
RoHS	Yes
Status	Active

Electrical Specifications

Inrush Current Info:



Vin	Ipeak	T (@ 50% of Ipeak)
277 Vrms	7.4A	600 μ s



Revised 04/03/2012



XV050C100V054DPM1

Brand Name	XITANIUM
Description	50W SM 0.3-1A 54V 0-10V 277V
Input Voltage	277V
Input Frequency	60Hz
RoHS	Yes
Status	Active

Electrical Specifications

Lifetime vs. Tcase of Driver:

Failure Rate Info:

1. <0.2% per 1 kHr @<= Tcase 75 C

Isolation:

Isolation	Input Wires	Output Wires	0-10v Wires	Chassis
Input Wires	NA	1600	1600	1600
0-10v Wires	1600	1600	NA	1600
Chassis	1600	1600	1600	NA

Lightolier Dimmer compatibility list	ZP260QE (ELV 3-way)
	Leviton VZE06-1LZ (ELV 3-way)
	Lightolier ZP425QE
	Lutron DVELV-303P (ELV 3-way)
	Lutron SELV-300P
	Leviton IPEO4-1LX

Revision History:

Rev No.	Date	Description	Approval	Remarks
1.1	1/23/2012	*Remove graph "Failure rate vs. Tcase	N.T.	
1.2	1/23/2012	* Add Envir. Protection Rating	N.T.	
1.3	2/29/2012	Update Status from "Preliminary" to "Active"	N.T.	
1.4	03/02/2012	*Remove the "M" at the end of part#	N.T.	
1.5	03/05/2012	*Update Rset2 Table	N.T.	
1.6	04/03/2012	*Remove Dimming Method: Phase Cut	N.T.	

Revised 04/03/2012

PHILIPS LIGHTING ELECTRONICS N.A.

10275 WEST HIGGINS ROAD · ROSEMONT, IL 60018

Tel: 800-322-2086 · Fax: 888-423-1882 · www.philips.com/advance

Customer Support/Technical Service: 800-372-3331 · OEM Support: 866-915-5886