

# PHILIPS

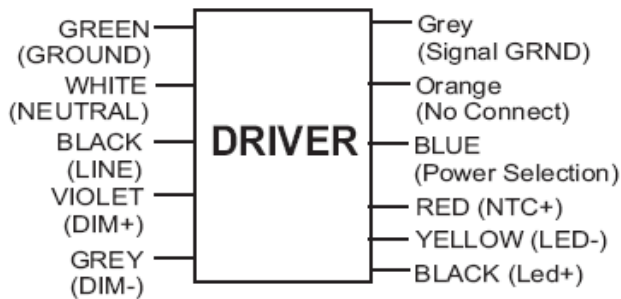
## LEDINTA0520C80DB

|                 |                                 |
|-----------------|---------------------------------|
| Brand Name      | XITANIUM                        |
| Driver Type     | Xitanium .35-.52A 80V 0-10V Dim |
| Input Voltage   | 120-277V                        |
| Input Frequency | 50/60Hz                         |
| RoHS            | Yes                             |
| Status          | Active                          |

### Electrical Specifications

| Max. Output Power (W) | Output Voltage (V) | Output Current (A) | Operating Temp. Range (°F/°C) | Max Input Current at 120V (A) | Max. Input Power (W) | Inrush Current (A <sub>pk</sub> .µs) | Max. THD (%) | Min. Power Factor | Surge Protection (KV) | Weight (Lbs) | Envir. Protection Rating |
|-----------------------|--------------------|--------------------|-------------------------------|-------------------------------|----------------------|--------------------------------------|--------------|-------------------|-----------------------|--------------|--------------------------|
| 40                    | 40-77              | 350-520mA          | -20~55°C                      | 0.36                          | 47                   | 74-120                               | 20           | 0.9               | 2.5                   | 0.7          | UL Dry & Damp            |

### Wiring/Connection Diagram



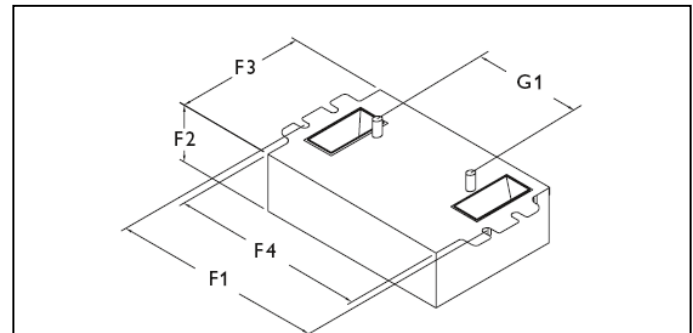
Leave Blue unconnected to Grey for 520mA, Connect Blue to Grey for 350mA.

Input, Output and for 1-10V Dimming, please use lead-wires 18AWG (0.78mm<sup>2</sup>) 105C/600V solid copper.



To be updated

| Dimming Method | Dimming Range (%) | Min. Output Power (W) |
|----------------|-------------------|-----------------------|
| 0-10V          | 10% ~ 100%        | 20                    |



| F1            | F2           | F3           | F4            | G1          |
|---------------|--------------|--------------|---------------|-------------|
| 4.55" (116.6) | 1.18" (30.0) | 3.00" (76.4) | 4.20" (106.7) | 2.0" (50.8) |

|                     | in. (mm)    |
|---------------------|-------------|
| Case Length(F4)     | 4.2 (106.7) |
| Case Height(F2)     | 1.18 (30.0) |
| Case Width(F3)      | 3.0 (76.4)  |
| Mounting Length(F1) | 4.55(116.6) |
| Stud Width(G1)      | 2.0 (50.8)  |



**C-ULUS**  
Power Unit  
Dry & Damp  
location



Revised 01/24/2012

### PHILIPS LIGHTING N.A.

10275 WEST HIGGINS ROAD · ROSEMONT, IL 60018

Tel: 800-322-2086 · Fax: 888-423-1882 · www.philips.com/advance

Customer Support/Technical Service: 800-372-3331 · OEM Support: 866-915-5886



| <b>LEDINTA0520C80DB</b> |                                 |
|-------------------------|---------------------------------|
| Brand Name              | XITANIUM                        |
| Driver Type             | Xitanium .35-.52A 80V 0-10V Dim |
| Input Voltage           | 120-277V                        |
| Input Frequency         | 50/60Hz                         |
| RoHS                    | Yes                             |
| Status                  | Active                          |

## Installation & Application Notes:

### Section I – Physical Characteristics

- 1.1 LED Driver shall be installed inside an electrical enclosure.
- 1.2 Wiring inside electrical enclosure shall comply with 600V/105°C rating or higher.

### Section II – Performance

- 2.1 LED Driver is certified by UL Class I for use in a dry or damp location..
- 2.2 LED Driver has Class A sound rating.
- 2.3 LED Driver has an operating ambient temperature range of -20°C to 55°C.
- 2.4 LED Driver has a maximum life expectancy of 50,000 hours at Tcase of ≤ 70°C.
- 2.5 LED Driver has a maximum life expectancy of 100,000 hours at Tcase of ≤ 62°C.
- 2.6 LED Driver has a typical self rise of 25°C in open air without heat sink.
- 2.7 LED Driver maximum allowable case temperature is 75°C – see product label for measurement location
- 2.8 LED Driver reduces output power to LEDs if its maximum allowable case temperature is exceeded.
- 2.9 LED Driver has a failure rate ≤ 0.01% per 1,000 hours at Tcase ≤ 70°C.
- 2.10 LED Driver has a failure rate of 0.01% - 0.02% per 1,000 hours at Tcase of 70°C - 80°C.
- 2.11 LED Driver tolerates sustained open circuit and short circuit output conditions without damage.
- 2.12 LED Driver complies with FCC rules and regulations, as per Title 47 CFR Part 15 Non-Consumer (Class A).

### Section III – UL Conditions of Acceptability (File E321253)

- 3.1 The driver shall be installed in compliance with the enclosure, mounting, spacing, casualty and segregation requirements of the end product.
- 3.2 The driver enclosure temperature in the end-use application should not exceed 74°C at the (Tc) location specified on the marking label.
- 3.3 The driver is suitable for use in “DRY” and also suitable for “DAMP LOCATION”.
- 3.4 Primary and Secondary wiring to be 18 AWG solid copper wire, rated 600V minimum, 105°C. Strip wire 3/8 in prior to inserting into primary/secondary terminal blocks.
- 3.5 The dimming circuit is not isolated and shall be considered as a primary circuit in the end-use application.
- 3.6 The leakage current test must be performed in the end-use application. However, the leakage current was measured using leakage current tester by Simpson model 229-2 and the maximum measured current was 0.301mA.
- 3.7 The driver was evaluated as a “Direct”; “Non-Isolating” type despite the use of isolating transformers in the circuit design. Therefore, the output circuit shall be considered as a primary circuit in the end-use application.
- 3.8 The enclosure must be connected to earth ground in the end-use application.
- 3.9 The construction of the enclosure of the drivers is considered a suitable electrical enclosure only when the Input/Output terminal block side of the enclosure is installed and provided with a suitable electrical enclosure in the end use product.

Revised 01/24/2012

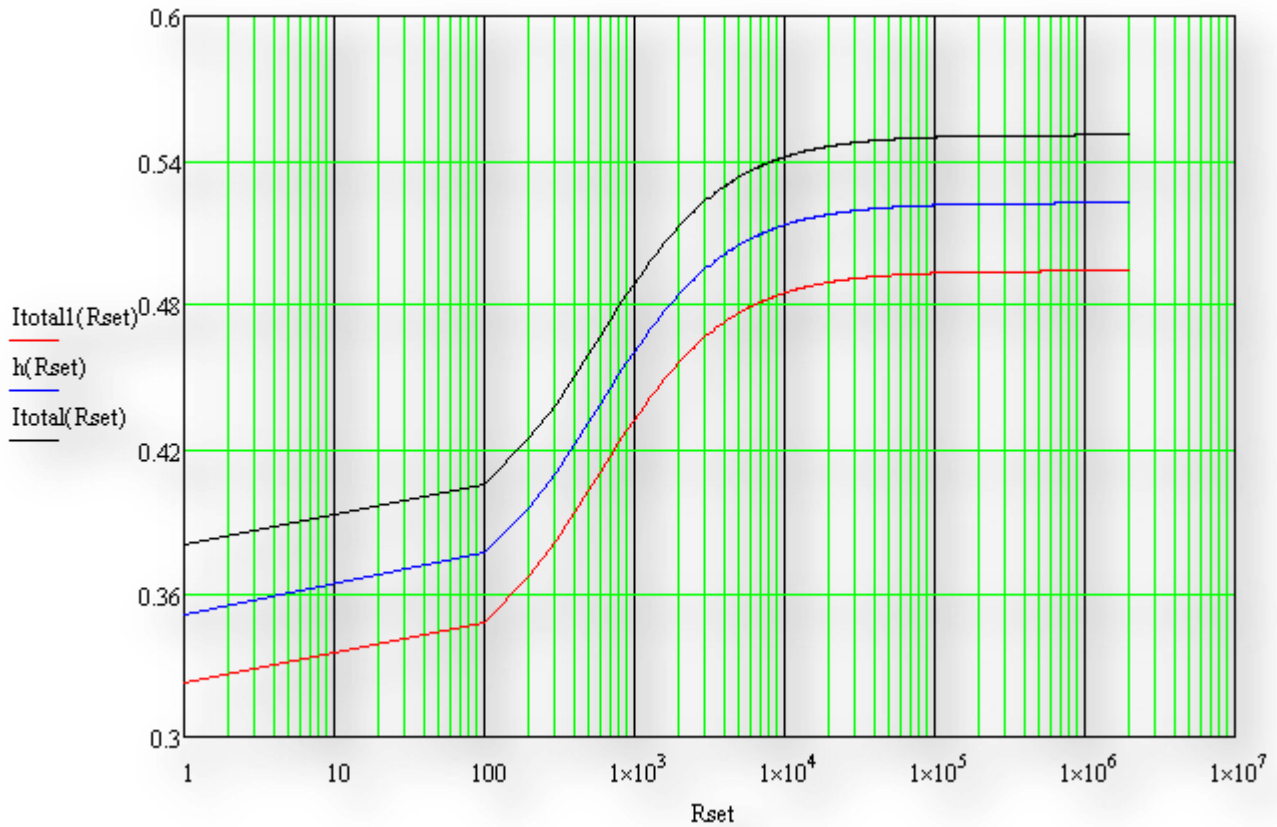
### PHILIPS LIGHTING N.A.

10275 WEST HIGGINS ROAD · ROSEMONT, IL 60018  
Tel: 800-322-2086 · Fax: 888-423-1882 · www.philips.com/advance  
Customer Support/Technical Service: 800-372-3331 · OEM Support: 866-915-5886



| <b>LEDINTA0520C80DB</b> |                                 |
|-------------------------|---------------------------------|
| Brand Name              | XITANIUM                        |
| Driver Type             | Xitanium .35-.52A 80V 0-10V Dim |
| Input Voltage           | 120-277V                        |
| Input Frequency         | 50/60Hz                         |
| RoHS                    | Yes                             |
| Status                  | Active                          |

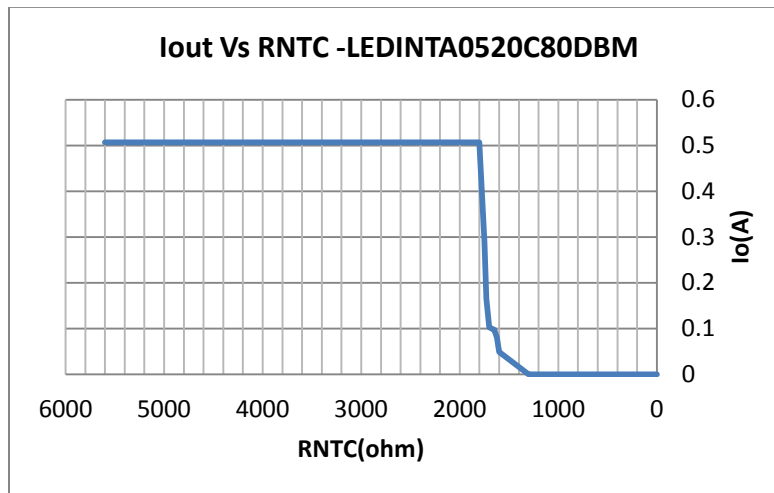
**Adjustable Output Current Info (350mA-520mA):**



Revised 01/24/2012

| <b>LEDINTA0520C80DB</b> |                                 |
|-------------------------|---------------------------------|
| Brand Name              | XITANIUM                        |
| Driver Type             | Xitanium .35-.52A 80V 0-10V Dim |
| Input Voltage           | 120-277V                        |
| Input Frequency         | 50/60Hz                         |
| RoHS                    | Yes                             |
| Status                  | Active                          |

## Variation of output current level with $R_{NTC}$ :

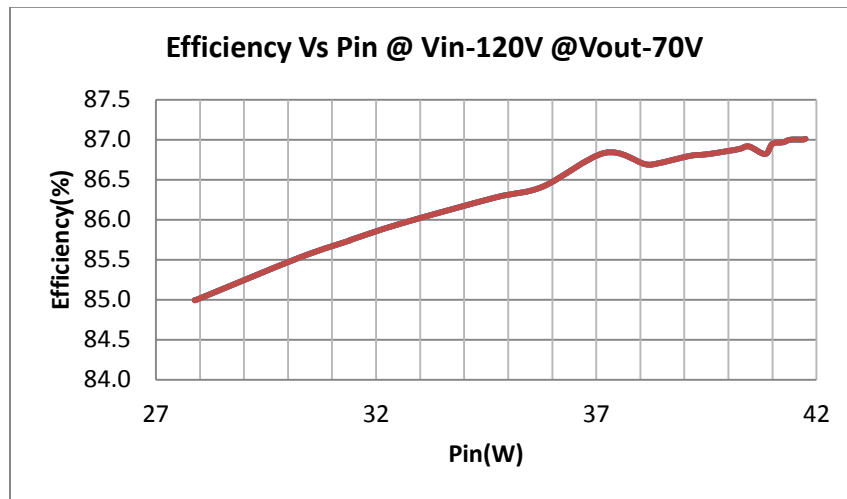


Here, if  $R_{NTC} < 1800\Omega$ , then  $I_{out}$  is reduced to 90Ma.

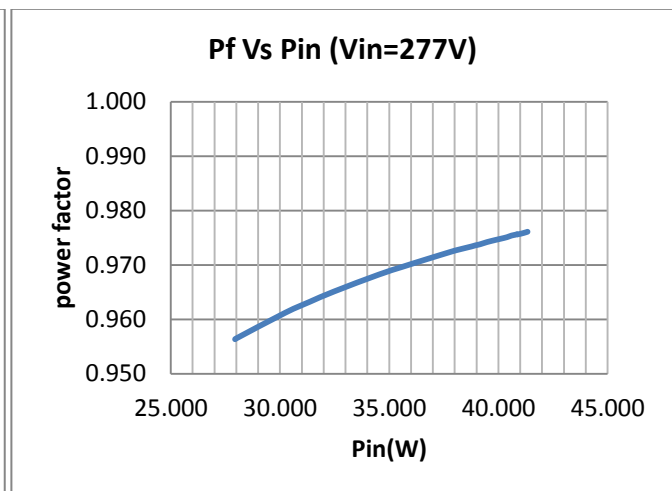
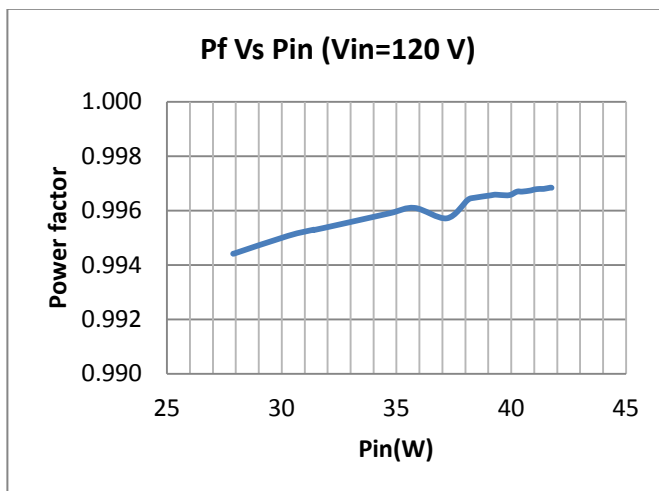


| <b>LEDINTA0520C80DB</b> |                                 |
|-------------------------|---------------------------------|
| Brand Name              | XITANIUM                        |
| Driver Type             | Xitanium .35-.52A 80V 0-10V Dim |
| Input Voltage           | 120-277V                        |
| Input Frequency         | 50/60Hz                         |
| RoHS                    | Yes                             |
| Status                  | Active                          |

### Efficiency of the driver VS Input Power@ Constant LED Voltage 70V



### PF(Power Factor) VS Pin @120V and 277V:

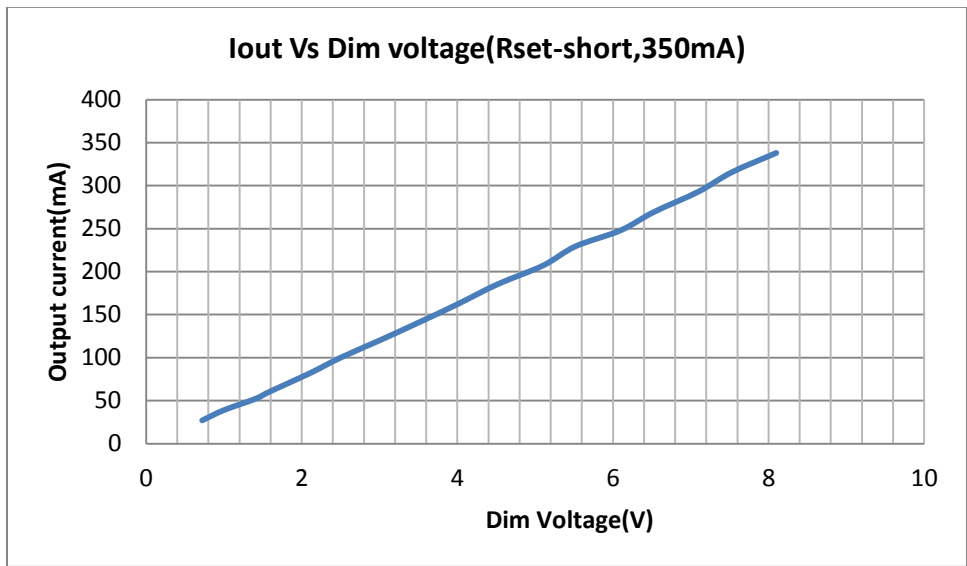
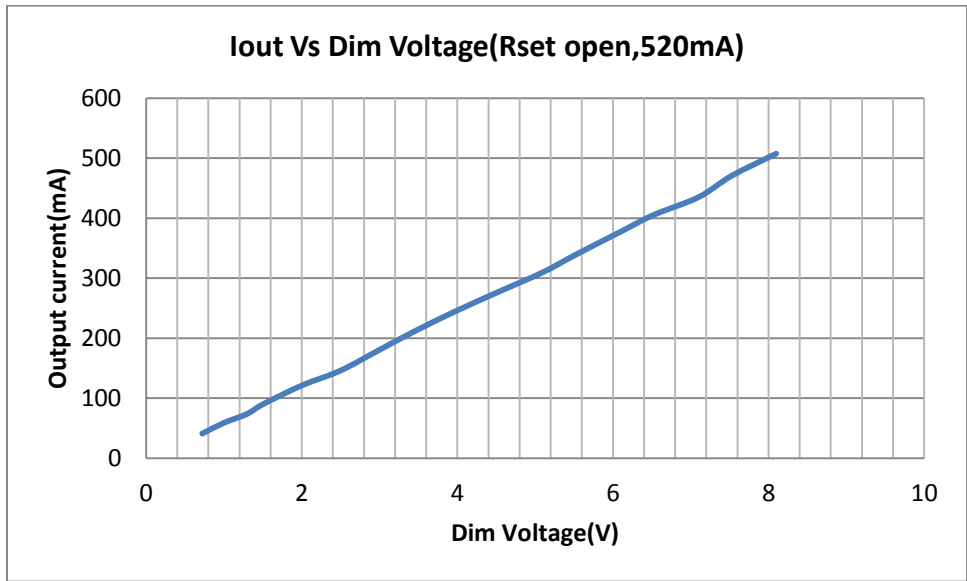


Revised 01/24/2012



| <b>LEDINTA0520C80DB</b> |                                 |
|-------------------------|---------------------------------|
| Brand Name              | XITANIUM                        |
| Driver Type             | Xitanium .35-.52A 80V 0-10V Dim |
| Input Voltage           | 120-277V                        |
| Input Frequency         | 50/60Hz                         |
| RoHS                    | Yes                             |
| Status                  | Active                          |

### 0-10V Dimming Info:



Revised 01/24/2012



| <b>LEDINTA0520C80DB</b> |                                 |
|-------------------------|---------------------------------|
| Brand Name              | XITANIUM                        |
| Driver Type             | Xitanium .35-.52A 80V 0-10V Dim |
| Input Voltage           | 120-277V                        |
| Input Frequency         | 50/60Hz                         |
| RoHS                    | Yes                             |
| Status                  | Active                          |

### Compatible Dimmers( Please verify with vendors):

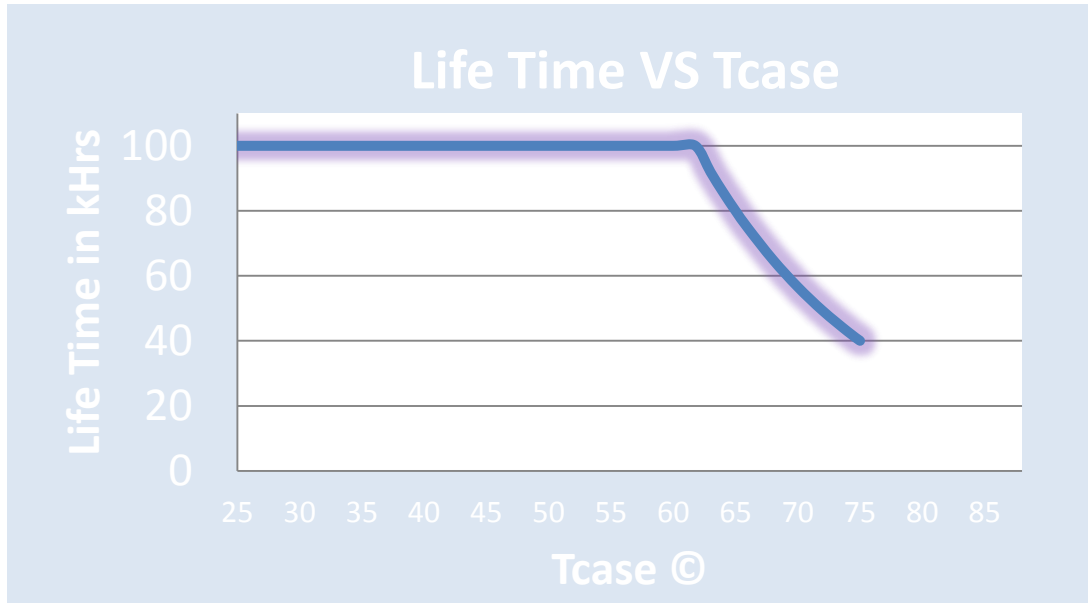
#### Wallbox Dimmer - Mark 7 0-10V

| Control Manufacturer           | Wallbox Dimmer   | Power Booster Available |
|--------------------------------|--|-------------------------|
| Douglas Lighting Controls      | WPC-5721   |                         |
| Entertainment Technology       | Tap Glide TG600FAM120 (120V)<br>Tap Glide Heatsink TGH1500FAM120 (120V)<br>Oasis OA2000FAMU (120/277V)   |                         |
| Honeywell, Inc.                | EL7315A1019 and EL7315A1009  | EL7305A1010 (optional)  |
| HUNT Dimming                   | Preset slide: PS-010-IV-120V and PS-010-WH-120V<br>Preset slide: PS-010-3W-IV-120V and PS-010-3W-WH-120V<br>Preset slide: PS-010-IV-277V and PS-010-WH-277V<br>Preset slide: PS-010-3W-IV-277V and PS-010-3W-WH-277V<br>Preset slide, controls FD-010: PS-IFC-010-IV- and PS-IFC-010-WH-120/277V<br>Preset slide, controls FD-010: PS-IFC-010-3W-IV- and PS-IFC-010-3W-WH-120/277V<br>Remote mounted unit: FD-010-120V and FD-010-277V |                         |
| Lehigh Electric Products Co.   | Solitaire  | PBX                     |
| Leviton Lighting Controls Div. | Leviton Centura Fluorescent Control System<br>IllumaTech™ IP7 Series   | CN100<br>PE300          |
| Lightolier Controls            | Sunrise Preset slider ZP600FAM120 (120V)<br>Momentum Preset slider MP1500FAM120 (120V)<br>Vega Slider V2000FAMU (120/277)  |                         |
| Lithonia Controls              | ISD BC<br>SLD LPCS<br>Digital Equinox (DEQ BC)   | RDM FC                  |
| Lutron Electronics Co., Inc.   | Visit <a href="http://www.lutron.com/advance">www.lutron.com/advance</a> for the latest control information and selection  |                         |
| PDM Electrical Products        | WPC-5721   |                         |
| Starfield Controls             | TR61 with DALI interface port  | RT03 DALInet Router     |
| The Watt Stopper, Inc.         | LS-4 used with LCD-101 and LCD-103   |                         |

Revised 01/24/2012

**PHILIPS LIGHTING N.A.**  
 10275 WEST HIGGINS ROAD · ROSEMONT, IL 60018  
 Tel: 800-322-2086 · Fax: 888-423-1882 · [www.philips.com/advance](http://www.philips.com/advance)  
 Customer Support/Technical Service: 800-372-3331 · OEM Support: 866-915-5886

| <b>LEDINTA0520C80DB</b> |                                 |
|-------------------------|---------------------------------|
| Brand Name              | XITANIUM                        |
| Driver Type             | Xitanium .35-.52A 80V 0-10V Dim |
| Input Voltage           | 120-277V                        |
| Input Frequency         | 50/60Hz                         |
| RoHS                    | Yes                             |
| Status                  | Active                          |



**Failure Rate Info:**

1. <0.01% per 1kHr @ <= Tcase 80C

**Revision History:**

| Rev No. | Date       | Description                             | Approval | Remarks |
|---------|------------|---|----------|---------|
| 1.1     | 11/17/2011 | * Remove graph "Failure rate vs. Tcase" | N.T.     |         |
| 1.2     | 01/24/2012 | * Add Envir. Protection Rating          | N.T.     |         |
|         |            |   |          |         |
|         |            |   |          |         |

Revised 01/24/2012