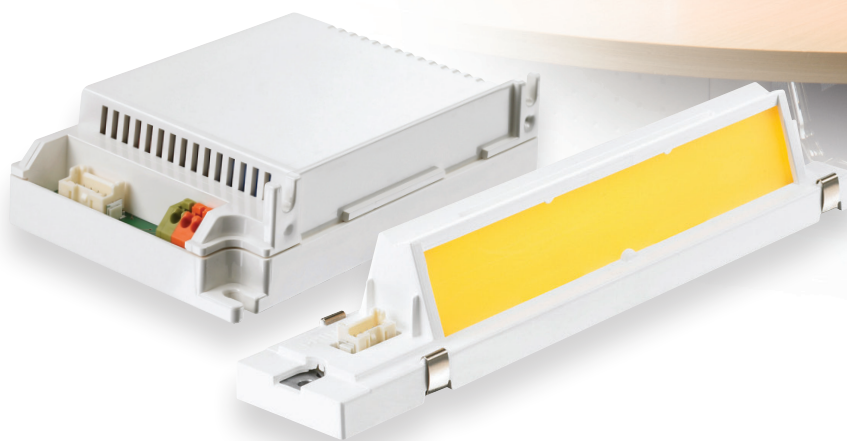


INDOOR

Philips Fortimo LED Linear Light Module System

Breakthrough energy savings with high quality illumination



Features

- Patented remote phosphor technology
- Future-proof, convenient modules
- 5 year limited warranty on system
- CE recognized
- 0-10V Dimming

Benefits

- High efficiency and consistent lighting
- Upgradeable and easily replaceable
- Extremely reliable lighting system
- Meets the needs of the lighting industry
- Added system control, additional energy savings

Applications: Fluorescent replacement, wall-washing, outdoor lighting and general ambient illumination

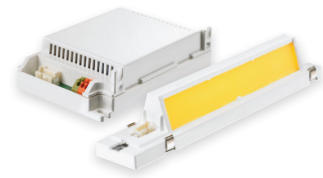
PHILIPS

FUTURE
Lighting Solutions
Making LED Lighting Solutions Simple™

www.FutureLightingSolutions.com

Philips Fortimo LED Linear Light Module System

Breakthrough energy savings with high quality illumination



1. LED Light Modules

These future-proof modules are designed for ease of integration into existing or new fixtures. They deliver high quality illumination, uniform colors and consistent lighting with enough lumens to compete with conventional light sources.

Description	Initial Lumens	CRI	CCT (K)	System Input Power (W)	System Efficacy (Lm/W)	Input Voltage (V)	Module B50 L70 (Hours) T case max 55°C	T ambient (°C)	Fortimo LLM Part Number
Fortimo LLM 1800 ?W/830	1800	80	3000	?	?	220-240	50k	-20	?
Fortimo LLM 1800 12W/840	1800	80	4000	24	75	220-240	50k	-20	92900061603

2. Driver Solution

The highly efficient Xitanium LED driver is specifically designed for the modules. These drivers have various features including dimming (0 – 10V), thermal foldback, fixed output and a 12V output which can be used with a Nuventix SynJet among other options. Each Fortimo LED Linear Light Module requires one Xitanium LED driver.

Description	Input Voltage	Dimming	Wattage	Fortimo Driver Part Number
Xitanium LED Driver	120-277VAC	0-10V	35W	913701213402

3. Cable Solution

As an important part of the Fortimo system, this cable has been specifically designed to maintain the quality of the overall system as well as to ensure the system warranty.

Description	Fortimo Cable Part Number — Length 500mm
Fortimo LED LLM INDOOR CABLE (60cm)	929000633803

4. Thermal Management Solutions

To optimize the lifetime and amount of light from the Fortimo LED Linear Light Module system, it must operate within specified temperature limits. In conjunction with Nuventix heat sinks (passive cooling) and Nuventix SynJet coolers (active cooling), proper thermal management will give you the ability to control the overall system performance.

Description	Nuventix Heat Sink Part Number	Nuventix SynJet Cooler Part Number	Nuventix Wire Harness
Fortimo LED LLM 1800 - T _{amb} 35°C	NX301100	SSCCS-IM012-002	WALLS-C4600-001



Note: Current specifications, subject to change. Please check our website for the latest specifications.