

# Xitanium/Fortimo LED Drivers Indoor

## Fortimo LED driver 1100-3000

The new Fortimo and Xitanium electronic LED drivers are specially designed to operate LED solutions for general lighting applications. There are Xitanium LED driver versions in 17W / 24V, 25W / 36V and 45W / 80V. There are fixed-output and dimmable (trailing edge and Touch & DALI) versions. The high output voltage (up to 80V) and adjustable output current (200 to 700mA) enable operation of many LEDs (high light output) and flexibility in LED fixture design. The output current can be set by placing a resistor on your LED PCB (Level 2 board). The new housing design incorporates three different mounting options: independent, screw and click mounting. The 25W and 45W versions also feature a 12V output to operate active cooling or decorative LED light effects. The Xitanium LED driver 45W/80V is available in fixed-output version in an independent housing.

## Product data

### • General Characteristics

|                              |                     |
|------------------------------|---------------------|
| Input Frequency              | 50/60 Hz            |
| Relative Humidity            | 95 %                |
| IP Classification            | 20                  |
| Lifetime 90% surv.@Tcaselife | 50000 hr            |
| System Description           | -                   |
| Number of LEDs               | 5 (min), 20 (max) x |

### • Operating Characteristics

|                                |             |
|--------------------------------|-------------|
| 12V output                     | Yes         |
| Ripple current                 | 20 %        |
| Efficiency Range               | 80-90 %     |
| Power Factor (100% load)       | 0.9 (min) - |
| Input Power max                | 46 W        |
| Output Voltage Range           | 20-80 V     |
| Output Current Range (mA)      | 200-700     |
| Total Harmonic Distortion IEC  | 20 (max) %  |
| Inrush Current Peak            | 48 (max) A  |
| Inrush Current                 | 180 us      |
| Width to 50%                   |             |
| Input Voltage Range (AC)       | 220-240 V   |
| Max drivers on MCB(16A type-B) | 12 (max) x  |

### • Temperature Characteristics

|                |            |
|----------------|------------|
| T-case maximum | 65 (max) C |
|----------------|------------|

|           |                       |
|-----------|-----------------------|
| T-ambient | -20 (min), 50 (max) C |
|-----------|-----------------------|

### • Approval & Application Chars

|                          |         |
|--------------------------|---------|
| Isolation classification | Class I |
|--------------------------|---------|

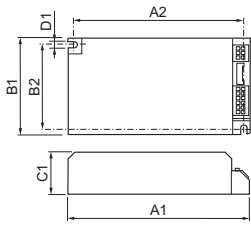
### • Product Dimensions

|                         |          |
|-------------------------|----------|
| Length A1               | 138 mm   |
| Width B1                | 74 mm    |
| Height C1               | 32 mm    |
| Fixing Hole Diameter D1 | 4.5 mm   |
| Fixing Hole Distance    | 63.6 mm  |
| Width B2                |          |
| Fixing Hole Distance    | 128.5 mm |
| Length A2               |          |

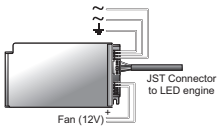
### • Product Data

|                             |                              |
|-----------------------------|------------------------------|
| Order code                  | 929000614403                 |
| Full product code           | 929000614403                 |
| Full product name           | Fortimo LED driver 1100-3000 |
| Order product name          | Fortimo LED driver 1100-3000 |
| Pieces per pack             | 1                            |
| Packing configuration       | 6                            |
| Packs per outerbox          | 6                            |
| Bar code on pack - EAN1     | 8727900920857                |
| Bar code on outerbox - EAN3 | 8727900920857                |
| Logistic code(s) - 12NC     | 929000614403                 |
| Net weight per piece        | 0.285 kg                     |

## Dimensional drawing



| Product                      | A1 (Norm) | A2 (Norm) | A3 (Norm) | B1 (Norm) | B2 (Norm) | B3 (Norm) | C1 (Norm) | D1 (Norm) |
|------------------------------|-----------|-----------|-----------|-----------|-----------|-----------|-----------|-----------|
| Fortimo LED driver 1100-3000 | 138       | 128.5     | -         | 74        | 63.6      | -         | 32        | 4.5       |



© 2011 Koninklijke Philips Electronics N.V.  
All rights reserved.

Specifications are subject to change without notice. Trademarks are the property of Koninklijke Philips Electronics N.V. or their respective owners.

[www.philips.com/lighting](http://www.philips.com/lighting)

2011, August 5  
data subject to change