

LEDINTA0024V4IFO

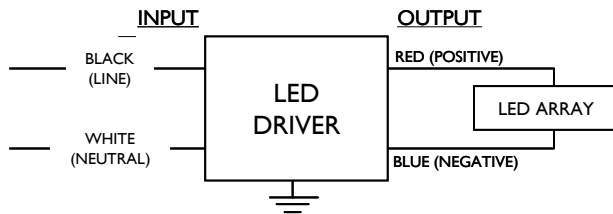
| | |
|-----------------|---------------|
| Brand Name | XITANIUM |
| Description | 100W 24V 4.1A |
| Input Voltage | 120~277 |
| Input Frequency | 50/60Hz |
| RoHS | Yes |
| Status | Active |

Electrical Specifications

| Output Power (W) | Output Voltage (V) | Output Current (A) | Tcase Max | Input Current (A) | Max. Input Power (W) | Inrush Current (A _{pk} /μs) | Max. THD (%) | Min. Power Factor | Surge Protection (KV) | Weight (Lbs/grams) | Envir. Protection Rating |
|------------------|--------------------|-------------------------|-----------|------------------------|----------------------|--------------------------------------|--------------|-------------------|-----------------------|--------------------|--------------------------|
| 100 | 24 cv 3.5~24 cc | 0.10~4.16 cv 4.16 cc | 90°C | 0.95@120V 0.40@277V | 117 | 100/200 | 20 | 0.90 | 4.0 | 1.4/635 | UL Dry & Damp |

cv = constant voltage mode, cc = constant current mode

Wiring Diagram



Input and output use lead-wires.
Lead-wires are 18AWG 105C/600V solid copper

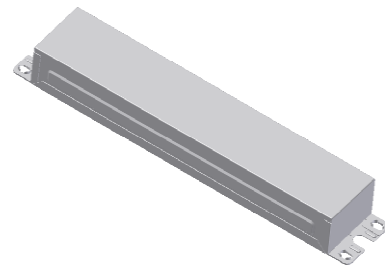
Standard Lead Length

| | in. | cm. |
|--------|-----|-----|
| Black | 9 | 22 |
| White | 9 | 22 |
| Blue | 26 | 66 |
| Red | 26 | 66 |
| Gray | | |
| Violet | | |

Maximum Wiring Distance (at full load)

| Wire Size (AWG) | Distance (feet) |
|-----------------|-----------------|
| 26 | 3 |
| 24 | 4 |
| 22 | 7 |
| 20 | 11 |
| 18 | 18 |
| 16 | 29 |
| 14 | 46 |
| 12 | 71 |
| 10 | 120 |

Enclosure



| | in. (mm) |
|-----------------|--------------|
| Case Length | 8.34 (211.8) |
| Case Width | 1.7 (43.2) |
| Case Height | 1.18 (29.9) |
| Mounting Length | 9.45 (228.4) |
| Mounting Width | 1.22 (30.9) |
| Overall Length | 9.45 (240) |



UL Class 2
E220165



7310_S-000
3426-32



Revised 02/17/2012

PHILIPS LIGHTING N.A.

10275 WEST HIGGINS ROAD · ROSEMONT, IL 60018
Tel: 800-322-2086 · Fax: 888-423-1882 · www.philips.com/advance
Customer Support/Technical Service: 800-372-3331 · OEM Support: 866-915-5886

| LEDINTA0024V4IFO | |
|-------------------------|---------------|
| Brand Name | XITANIUM |
| Description | 100W 24V 4.1A |
| Input Voltage | 120~277 |
| Input Frequency | 50/60Hz |
| RoHS | Yes |
| Status | Active |

Installation & Application Notes:

Section I – Physical Characteristics

- 1.1 LED Driver shall be installed inside an electrical enclosure
- 1.2 Wiring inside electrical enclosure shall comply with 600V/105°C rating or higher.

Section II – Performance

- 2.1 LED Driver is UL Class 2 power unit as per UL1310. It is also listed in the UL Sign Accessory Manual (UL SAM).
- 2.2 LED Driver has Class A sound rating.
- 2.3 LED Driver has a minimum operating ambient temperature of -40°C.
- 2.4 LED Driver has a life expectancy of 50,000 hours at Tcase of ≤ 80°C.
- 2.5 LED Driver has a life expectancy of 100,000 hours at Tcase of ≤ 70°C.
- 2.6 LED Driver has a typical self rise of 30°C at maximum load in open air without heat sink.
- 2.7 LED Driver is certified by UL for use in a dry or damp location (Outdoor Type I).
- 2.8 LED Driver tolerates sustained open circuit and short circuit output conditions without damage.
- 2.9 LED Driver maximum allowable case temperature is 90°C – see product label for measurement location.
- 2.10 LED Driver reduces output power to LEDs if maximum allowable case temperature is exceeded.
- 2.11 LED Driver has a failure rate of ≤ 0.01% per 1,000 hours.
- 2.12 LED Driver complies with FCC rules and regulations, as per Title 47 CFR Part 15 Non-Consumer (Class A).
- 2.13 **LED Driver conforms to EN61558-1, EN 61558-2-17 and EN 60065.**

Section III – UL Conditions of Acceptability (File E220165)

When installed in the end product, consideration shall be given to the following:

- 3.1 These LED Drivers have been evaluated to comply with Class 2 output criteria.
- 3.2 These LED Drivers are only suitable for use in Dry and Damp locations.
- 3.3 These products are rated as follows:

| Model | Input, 60 Hz. | | | OUTPUT V@Amperes DC |
|------------------------|---------------|-----------|---------|---------------------|
| | Volt/V | Amp/A | Power/W | |
| LEDINTA0024V41DLO | 120-277 | 0.95-0.40 | 100 | 24V@4.1 (*) |
| LED-INTA-0024V-41-F-LO | 120-277 | 0.95-0.40 | 100 | 24V@4.1 (*) |
| LEDINTA0024V41FO | 120-277 | 0.95-0.40 | 100 | 24V@4.1 (*) |
| LED-INTA-0024V-30-F-LO | 120-277 | 0.72-0.32 | 72 | 24@3.0 (**) |
| LED-INTA-0024V-30-D-LO | 120-277 | 0.72-0.32 | 72 | 24@3.0 (**) |
| LED-INTA-0024V-20-F-LO | 120-277 | 0.48-0.22 | 48 | 24@2.0 (***) |
| LED-INTA-0024V-20-D-LO | 120-277 | 0.48-0.22 | 48 | 24@2.0 (***) |
| LEDINTA0024V32FO | 120-277 | 0.75-0.35 | 77 | 24@3.2 (+) |
| LEDINTA0024V22FO | 120-277 | 0.50-0.25 | 53 | 24@2.2 (++) |

(*) - For connection to LED array consisting of 100 Watt maximum.

(**) - For connection to LED array consisting of 72 Watt maximum.

(***) - For connection to LED array consisting of 48 Watt maximum.

(+) - For connection to LED array consisting of 77 Watt maximum.

Revised 02/17/2012

PHILIPS LIGHTING N.A.

10275 WEST HIGGINS ROAD · ROSEMONT, IL 60018

Tel: 800-322-2086 · Fax: 888-423-1882 · www.philips.com/advance

Customer Support/Technical Service: 800-372-3331 · OEM Support: 866-915-5886

| LEDINTA0024V4IFO | |
|-------------------------|---------------|
| Brand Name | XITANIUM |
| Description | 100W 24V 4.1A |
| Input Voltage | 120~277 |
| Input Frequency | 50/60Hz |
| RoHS | Yes |
| Status | Active |

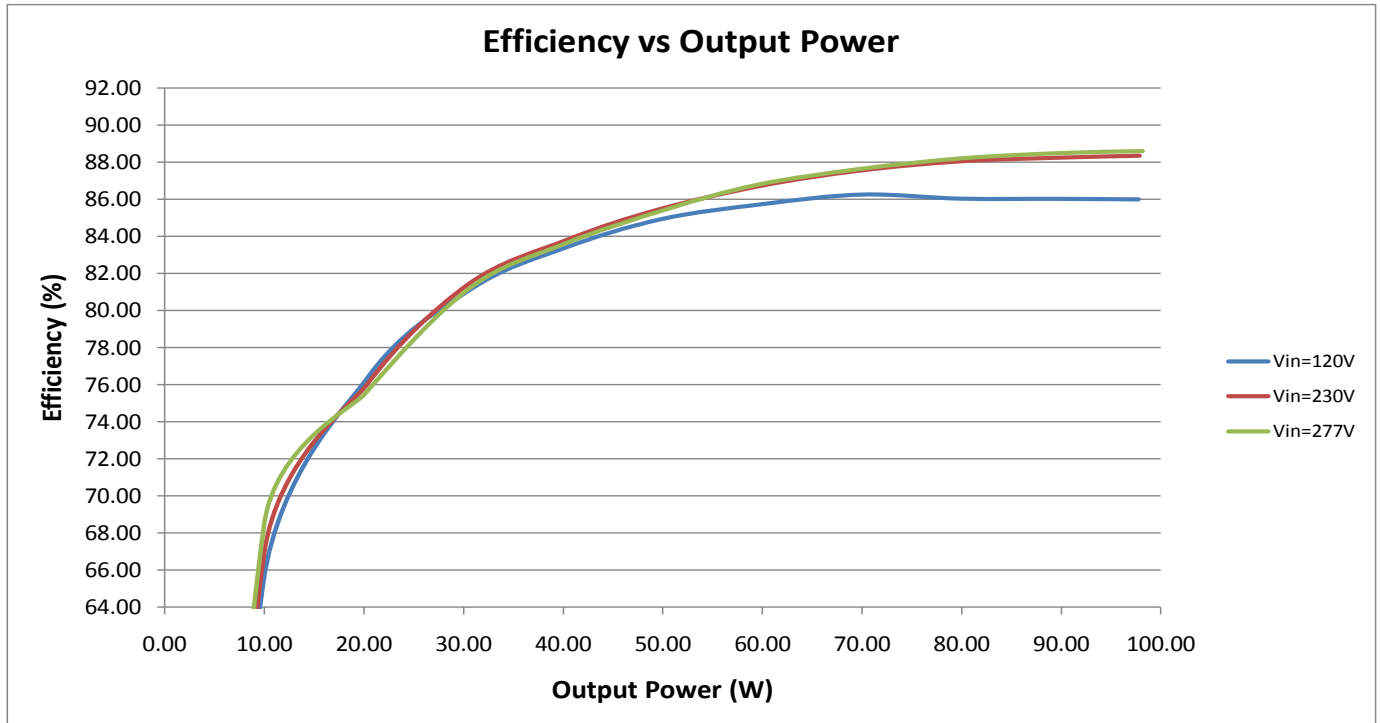
(++) - For connection to LED array consisting of 53 Watt maximum.

- 3.4 In the end product, power supply spacing to other heat producing components shall be minimum 4 inches spacing to sidewalls, and minimum 2 inches spacing to top of enclosure and mounted not closer than 1 in. end to end or 4 in. side to side from adjacent LED power supplies.
- 3.5 The units were submitted and tested for a maximum manufacturer's recommended Tc point described in the table below. If adjacent LED power supplies are spaced close than 1 in. end to end or 4 in. side to side, a temperature test shall be conducted in the end use product.

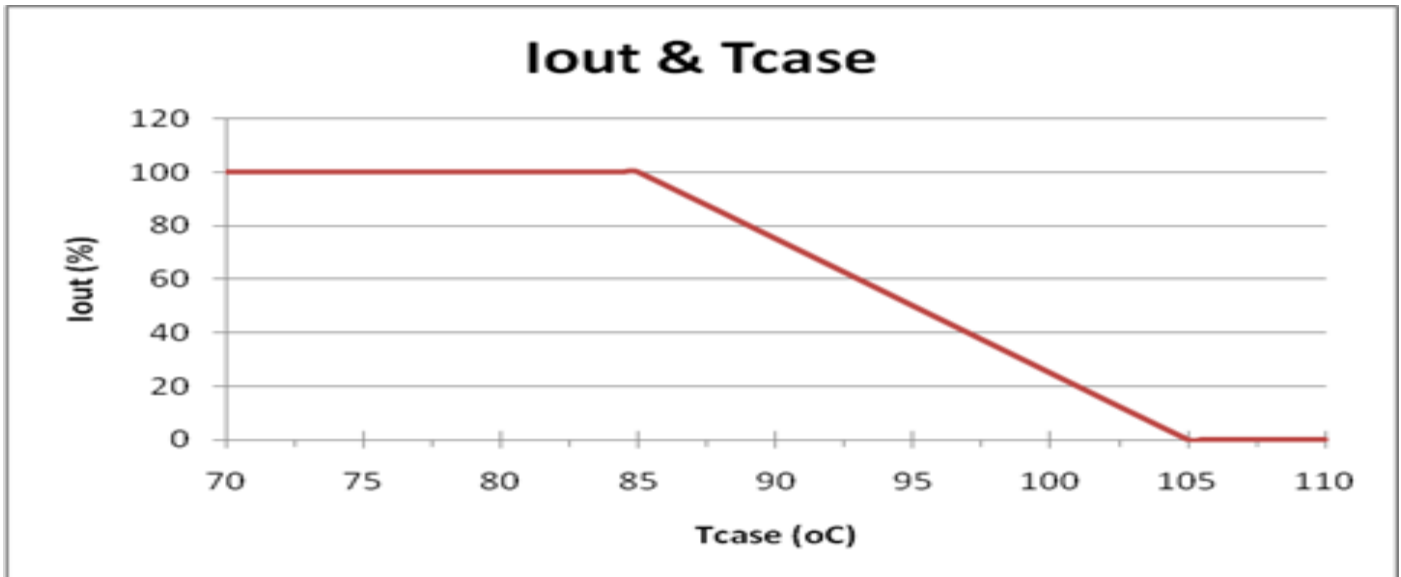
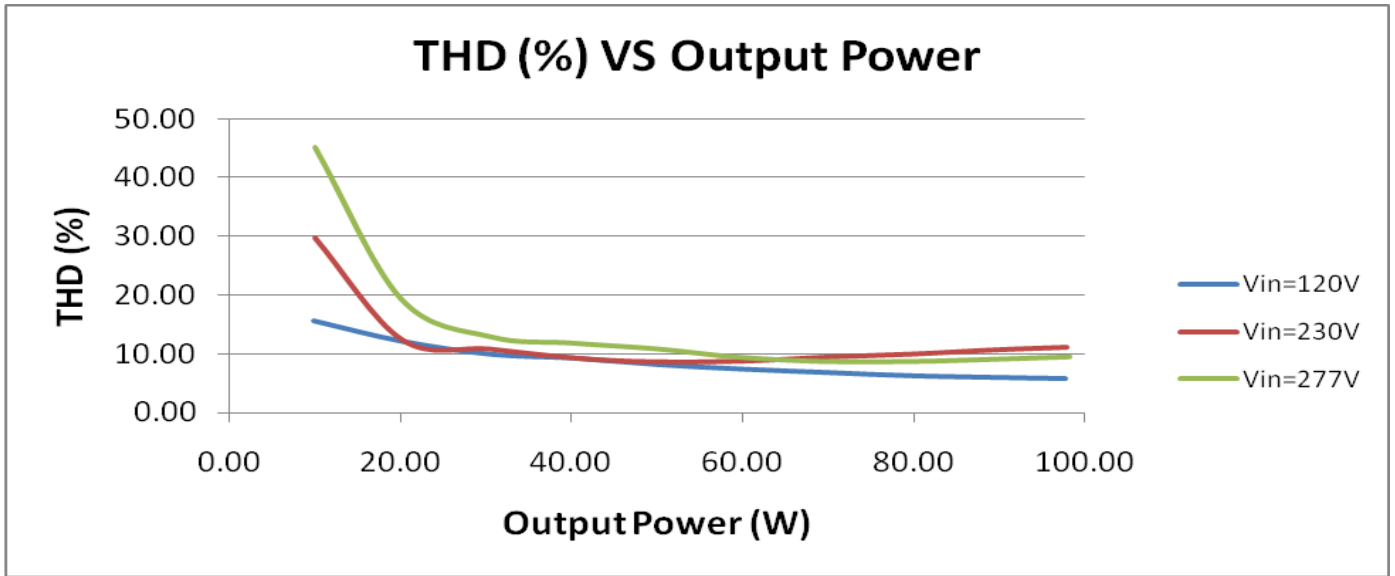
| Model No. | Input Voltage, Hz | Max. Case @ Tc, °C | Ambient, °C (Reference only)* |
|------------------------|--------------------------|---------------------------|--------------------------------------|
| LEDINTA0024V4IDLO | 120-277,60 | 85 | 61.5/63.2 |
| LEDINTA0024V4IFO | 120-277,60 | 90 | 56.6/59 |
| LED-INTA-0024V-4I-F-LO | 120-277,60 | 85 | 61.5/63.2 |
| LED-INTA-0024V-30-D-LO | 120-277,60 | 85 | 61.5/63.2 |
| LED-INTA-0024V-30-F-LO | 120-277,60 | 85 | 61.5/63.2 |
| LED-INTA-0024V-20-D-LO | 120-277,60 | 85 | 61.5/63.2 |
| LED-INTA-0024V-20-F-LO | 120-277,60 | 85 | 61.5/63.2 |
| LEDINTA0024V32FO | 120-277,60 | 90 | 56.6/59 |
| LEDINTA0024V22FO | 120-277,60 | 90 | 56.6/59 |

* - 120V/ 277V

| LEDINTA0024V4IFO | |
|-------------------------|---------------|
| Brand Name | XITANIUM |
| Description | 100W 24V 4.1A |
| Input Voltage | 120~277 |
| Input Frequency | 50/60Hz |
| RoHS | Yes |
| Status | Active |

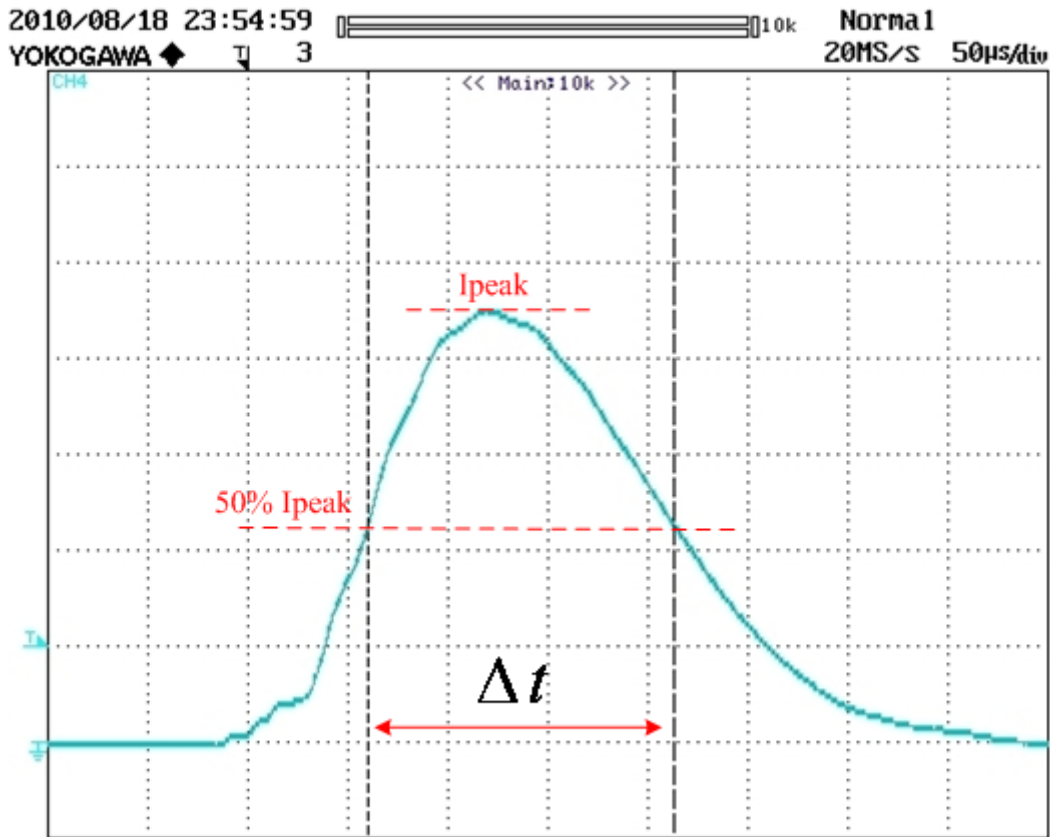


| LEDINTA0024V4IFO | |
|-------------------------|---------------|
| Brand Name | XITANIUM |
| Description | 100W 24V 4.1A |
| Input Voltage | 120~277 |
| Input Frequency | 50/60Hz |
| RoHS | Yes |
| Status | Active |



| LEDINTA0024V4IFO | |
|-------------------------|---------------|
| Brand Name | XITANIUM |
| Description | 100W 24V 4.1A |
| Input Voltage | 120~277 |
| Input Frequency | 50/60Hz |
| RoHS | Yes |
| Status | Active |

Inrush Current Info:



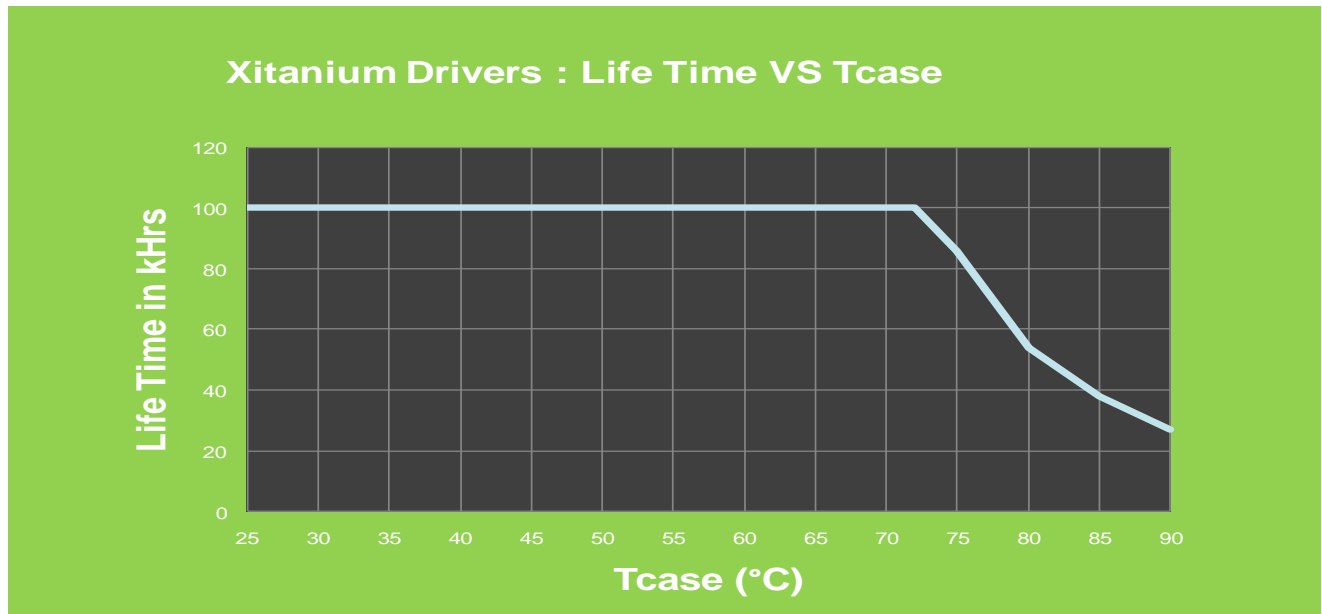
| Test Voltage | Ipeak [A] | 50% Ipeak [A] | Δt [uSec] |
|--------------|-----------|---------------|-----------|
| 120 | 45 | 22.5 | 155 |
| 240 | 90 | 45 | 155 |
| 277 | 100 | 50 | 155 |

Revised 02/17/2012

| LEDINTA0024V4IFO | |
|-------------------------|---------------|
| Brand Name | XITANIUM |
| Description | 100W 24V 4.1A |
| Input Voltage | 120~277 |
| Input Frequency | 50/60Hz |
| RoHS | Yes |
| Status | Active |

Life Time and Failure Rate Info:

- <0.01% per 1kHr**



Failure Rate Info:

- <0.01% per 1kHr @<= Tcase 80C**

Revision History:

| Rev No. | Date | Description | Approval | Remarks |
|---------|------------|---------------------------------------|----------|---------|
| 1.1 | 11/17/2011 | *Remove graph "Failure rate vs. Tcase | N.T. | |
| 1.2 | 01/12/2012 | *Add Envir. Protecting Rating | N.T | |
| 1.3 | 02/17/2012 | *Update Dimensions | M.A | |
| | | | | |

Revised 02/17/2012