

**FEATURES**

- **Excellent high frequency characteristics (50Ω, at 5GHz)**  
V.S.W.R.: Max. 1.25  
Insertion loss: Max. 0.5dB  
Isolation: Min. 35dB  
(Between open contacts)  
Min. 30dB  
(Between contact sets)
- **Surface mount terminal**  
Surface mount terminals are now standard so there is much less work in designing PC boards.
- **Small size**  
Size: 14.00 (L)×9.00 (W)×8.20 (H) mm  
.551 (L)×.354 (W)×.323 (H) inch

**TYPICAL APPLICATIONS**

- Measurement equipment market**  
Attenuator circuits, spectrum analyzer, oscilloscope, mobile equipment, tester
- Mobile telecommunication market**  
IMT2000, microwave communication
- Medical instruments market**

**SPECIFICATIONS**

**Contact**

Arrangement	2 Form C		
Contact material	Gold alloy		
Initial contact resistance	Max. 150mΩ		
Rating	Contact rating	1W (at 5 GHz, Impedance 50 Ω, V.S.W.R. ≤ 1.25) 10mA 10V DC (resistive load)	
	Contact carrying power	1W (at 5 GHz, Impedance 50 Ω, V.S.W.R. ≤ 1.25)	
	Max. switching voltage	30 V DC	
	Max. switching current	0.3 A DC	
High frequency characteristics (Initial) (~5GHz, Impedance 50Ω)	V.S.W.R.	Max. 1.25	
	Insertion loss (without D.U.T. board's loss)	Max. 0.5dB	
	Isolation	Between open contacts	Min. 35dB
		Between contact sets	Min. 30dB
	Input power	1W (at 5GHz, impedance 50Ω, V.S.W.R. ≤ 1.25, at 20°C)	
Expected life (min. operations)	Mechanical (at 180 cpm)	10 <sup>7</sup>	
	Electrical (at 20cpm)	1W, at 5GHz, V.S.W.R. ≤ 1.25	10 <sup>6</sup>
		10mA 10V DC (resistive load)	10 <sup>6</sup>

**Coil (at 20°C, 68°F)**

	Nominal operating power
Single side stable	200 mW
2 coil latching	150 mW

**Characteristics**

Initial insulation resistance*1		Min. 500 MΩ (at 500 V DC)
Initial breakdown voltage*2	Between open contacts	500 Vrms
	Between contact sets	500 Vrms
	Between contact and coil	500 Vrms
	Between coil and earth terminal	500 Vrms
Operate time [Set time]*3 (at 20°C)		Max. 5ms
Release time (without diode)[Reset time]*3 (at 20°C)		Max. 5ms
Temperature rise (at 20°C)*4		Max. 50°C
Shock resistance	Functional*5	Min. 500 m/s <sup>2</sup>
	Destructive*6	Min. 1,000 m/s <sup>2</sup>
Vibration resistance	Functional*7	10 to 55 Hz at double amplitude of 3 mm
	Destructive	10 to 55 Hz at double amplitude of 5 mm
Conditions for operation, transport and storage*8 (Not freezing and condensing at low temperature)	Ambient temp.	-30°C to 70°C -22°F to 158°F
	Humidity	5 to 85% R.H.
Unit weight		Approx. 3 g .11 oz

**Remarks**

- \* Specifications will vary with foreign standards certification ratings.
- \*1 Measurement at same location as "Initial breakdown voltage" section.
- \*2 Detection current: 10mA
- \*3 Nominal operating voltage applied to the coil, excluding contact bounce time.
- \*4 By resistive method, nominal voltage applied to the coil, 5GHz, V.S.W.R. ≤ 1.25
- \*5 Half-wave pulse of sine wave: 6ms, detection time: 10μs.
- \*6 Pulse of sine wave: 11ms.
- \*7 Detection time: 10μs
- \*8 Refer to 6. Conditions for operation, transport and storage mentioned in AMBIENT ENVIRONMENT.

# RJ (ARJ)

## ORDERING INFORMATION

Ex. ARJ 2        

Contact arrangement	Operating function	Terminal shape	Coil voltage (DC)	Packing style
2: 2 Form C	0: Single side stable 2: 2 coil latching	Nil: Standard PC board terminal A: Surface-mount terminal	03 : 3V 4H: 4.5V 12 : 12V 24 : 24V	Nil: Carton packing X: Tape end reel packing (picked from 1/2/3-pin side) Z: Tape and reel packing (picked from 6/7/8-pin side)

Note: Tape and reel packing symbol “-Z” is not marked on the relay. “X” type tape and reel packing (picked from 1/2/3-pin side) is also available. Suffix “X” instead of “Z”.

## TYPES AND COIL DATA (at 20°C 68°F)

### 1. Standard PC board terminal

• Packing of standard PC board terminal: 50 pcs. in an inner package (carton); 500 pcs. in an outer package

Operating function	Coil Rating, V DC	Part No.		Pick-up voltage, V DC (max.) (initial)	Drop-out voltage, V DC (min.) (initial)	Nominal operating current, mA (±10%)	Coil resistance, Ω (±10%)	Nominal operating power, mW	Max. allowable voltage, V DC
		Standard PC board terminal							
Single side stable	3	ARJ2003		2.25	0.3	66.6	45	200	3.3
	4.5	ARJ204H		3.375	0.45	44.4	101.2	200	4.95
	12	ARJ2012		9	1.2	16.6	720	200	13.2
	24	ARJ2024		18	2.4	8.3	2,880	200	26.4

Operating function	Coil Rating, V DC	Part No.		Set voltage, V DC (max.) (initial)	Reset voltage, V DC (min.) (initial)	Nominal operating current, mA (±10%)	Coil resistance, Ω (±10%)	Nominal operating power, mW	Max. allowable voltage, V DC
		Standard PC board terminal							
2 coil latching	3	ARJ2203		2.25	2.25	50	60	150	3.3
	4.5	ARJ224H		3.375	3.375	33.3	135	150	4.95
	12	ARJ2212		9	9	12.5	960	150	13.2
	24	ARJ2224		18	18	6.3	3,840	150	26.4

### 2. Surface-mount terminal

• Packing of surface-mount terminal: 50 pcs. in an inner package (carton); 500 pcs. in an outer package

• Packing of surface-mount terminal: 500 pcs. in an inner package (tape and reel); 500 pcs. in an outer package

Operating function	Coil Rating, V DC	Part No.		Pick-up voltage, V DC (max.) (initial)	Drop-out voltage, V DC (min.) (initial)	Nominal operating current, mA (±10%)	Coil resistance, Ω (±10%)	Nominal operating power, mW	Max. allowable voltage, V DC
		Carton packing	Tape and reel packing						
Single side stable	3	ARJ20A03	ARJ20A03Z	2.25	0.3	66.6	45	200	3.3
	4.5	ARJ20A4H	ARJ20A4HZ	3.375	0.45	44.4	101.2	200	4.95
	12	ARJ20A12	ARJ20A12Z	9	1.2	16.6	720	200	13.2
	24	ARJ20A24	ARJ20A24Z	18	2.4	8.3	2,880	200	26.4

Operating function	Coil Rating, V DC	Part No.		Set voltage, V DC (max.) (initial)	Reset voltage, V DC (min.) (initial)	Nominal operating current, mA (±10%)	Coil resistance, Ω (±10%)	Nominal operating power, mW	Max. allowable voltage, V DC
		Carton packing	Tape and reel packing						
2 coil latching	3	ARJ22A03	ARJ22A03Z	2.25	2.25	50	60	150	3.3
	4.5	ARJ22A4H	ARJ22A4HZ	3.375	3.375	33.3	135	150	4.95
	12	ARJ22A12	ARJ22A12Z	9	9	12.5	960	150	13.2
	24	ARJ22A24	ARJ22A24Z	18	18	6.3	3,840	150	26.4

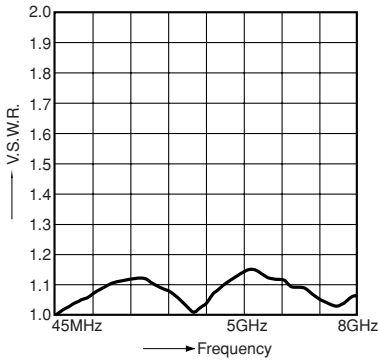
# REFERENCE DATA

## 1. High frequency characteristics

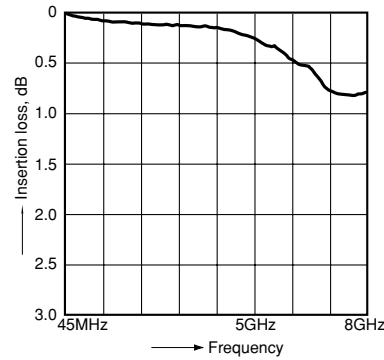
Sample: ARJ20A12

Measuring method: Measured with MEW PC board by HP network analyzer (HP8510C).

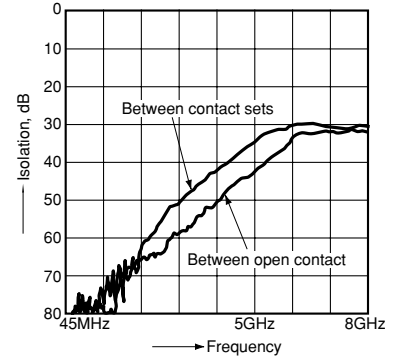
• V.S.W.R. characteristics



• Insertion loss characteristics (without D.U.T. board's loss)



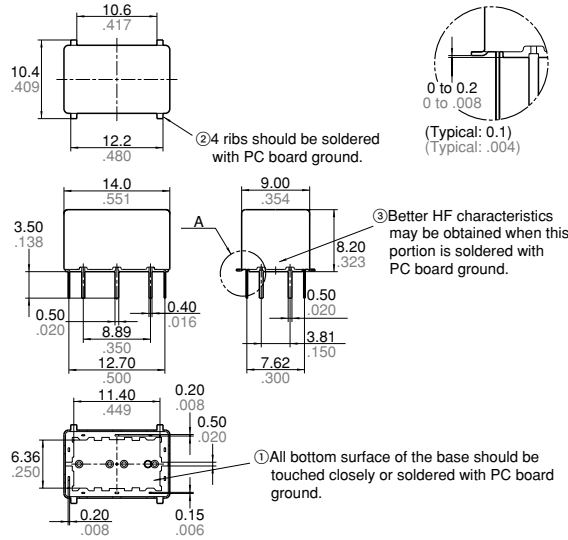
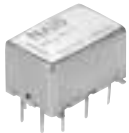
• Isolation characteristics



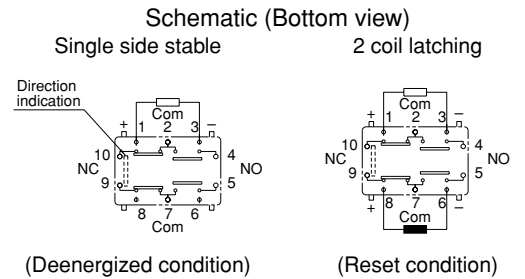
# DIMENSIONS

mm inch

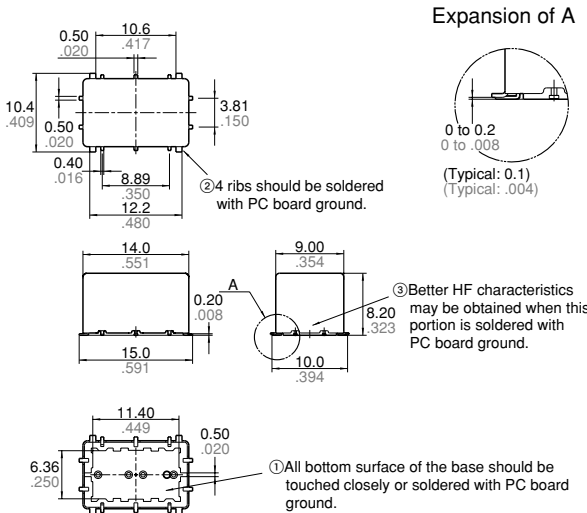
## 1. Standard PC board terminal



General tolerance:  $\pm 0.3 \pm .012$



## 2. Surface mount terminal



General tolerance:  $\pm 0.3 \pm .012$

