

CMM 220 female

STRAIGHT PRESS FIT



nn min = 04 nn max = 60

Part numbering :

2 2 2 PF n n

See Fixing on page 45-46
"Mxx" without fixing

nn = number of LF contacts

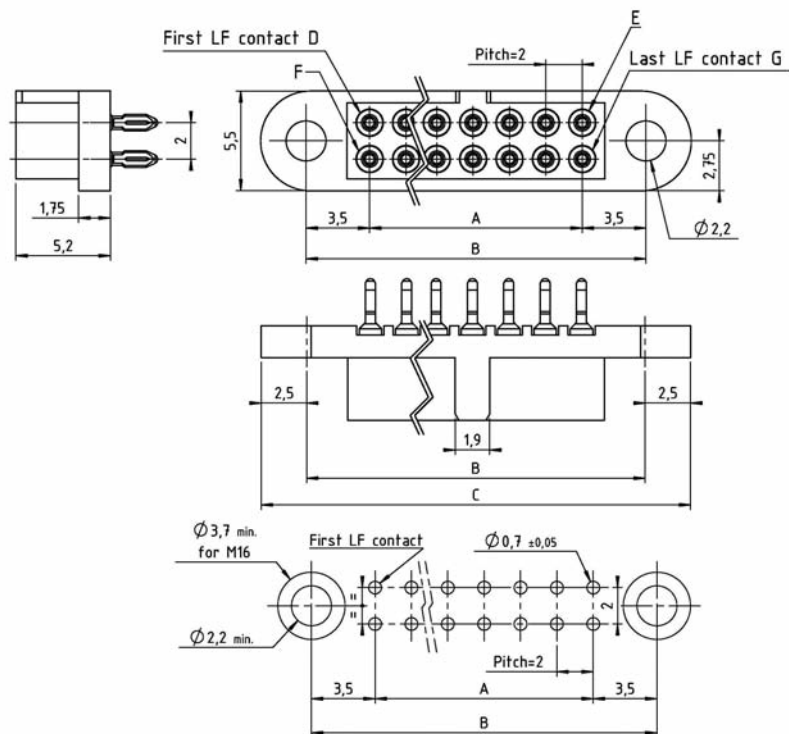
Calculation :

$$A = nn - 2$$

$$B = A + 7$$

$$C = A + 12$$

Refer to dimension table on cover page



CRIMP



nn min = 04 nn max = 60

Part numbering :

Type : S-C

2 2 2 n n

See Fixing on page 45-46
"Mxx" without fixing

nn = number of LF contacts

Type	Gauge
S	24-28
C	22

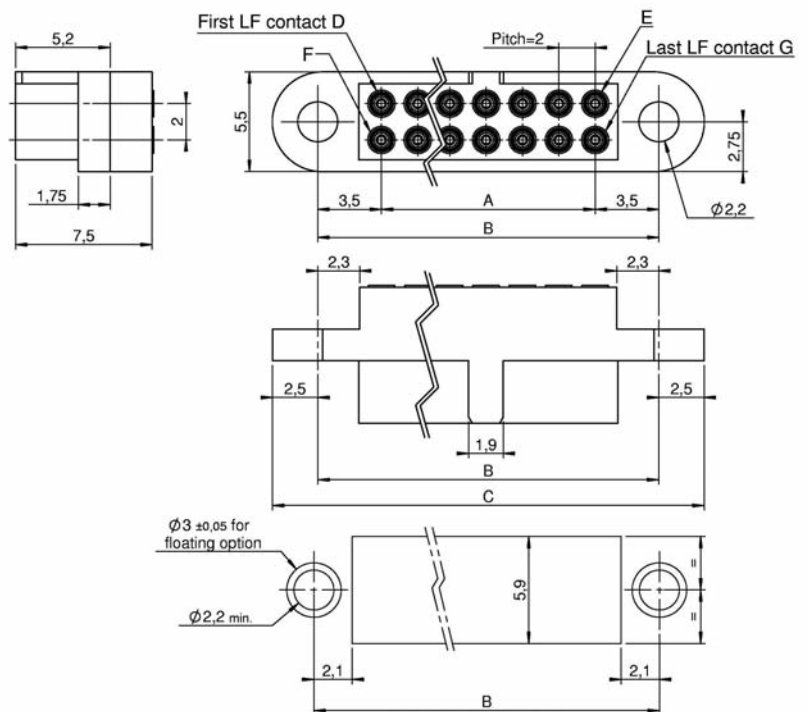
Calculation :

$$A = nn - 2$$

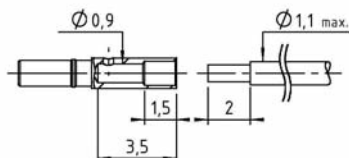
$$B = A + 7$$

$$C = A + 12$$

Refer to dimension table on cover page



Ref : C13064-P
Female crimp contact "C"
for AWG 22 cable



Ref : C12468
Female crimp contact "S"
for AWG 24-28

