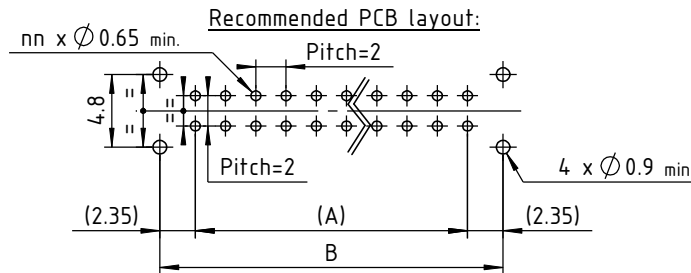
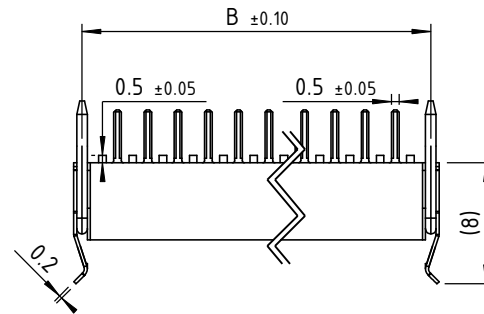


L : Latches fitted
 Leave blank : no Latches
 The strain relief straps are only sold separately. They are not delivered mount on connectors.

CONNECTOR SERIE 200 MALE

LF contact number nn	Length without Latches in mm			Signal contacts reference mark number			
	A	B	C	D	E	F	G
04	2	6.7	7.4	1	2	3	4
06	4	8.7	9.4	1	3	4	6
08	6	10.7	11.4	1	4	5	8
10	8	12.7	13.4	1	5	6	10
12	10	14.7	15.4	1	6	7	12
14	12	16.7	17.4	1	7	8	14
16	14	18.7	19.4	1	8	9	16
18	16	20.7	21.4	1	9	10	18
20	18	22.7	23.4	1	10	11	20
22	20	24.7	25.4	1	11	12	22
24	22	26.7	27.4	1	12	13	24
26	24	28.7	29.4	1	13	14	26
28	26	30.7	31.4	1	14	15	28
30	28	32.7	33.4	1	15	16	30
32	30	34.7	35.4	1	16	17	32
34	32	36.7	37.4	1	17	18	34
36	34	38.7	39.4	1	18	19	36
38	36	40.7	41.4	1	19	20	38
40	38	42.7	43.4	1	20	21	40
42	40	44.7	45.4	1	21	22	42
44	42	46.7	47.4	1	22	23	44
46	44	48.7	49.4	1	23	24	46
48	46	50.7	51.4	1	24	25	48
50	48	52.7	53.4	1	25	26	50



TECHNICALS FEATURES

MATERIAL

INSULATOR : Special PPS (Polyphenylene Sulfide Fiberglass filled thermoplastics) UL 94-V0

- Radiation resistance
- No humidity absorption
- Oxygen free

Note : PPS characteristics are recognized for space applications

SIGNAL CONTACTS for PCB:

Male :

- Contact area : Copper alloy / Ni + Au 1µ
- Contact tail : Copper alloy / Ni + Au flash 0.1µ

FIXING HARDWARE :

- Latch (optional) : Beryllium alloy / Ni 3µ

ELECTRICAL for LF Contacts

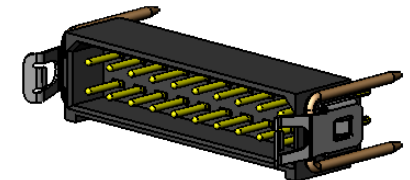
- All contacts : 3 A max. @ 25°C
2.2 A max. @ 85°C
- Working voltage (sea level) : Tested at 800 V DC
- Proof voltage : Tested at 1200 V DC
- Contact resistance (initially) : max. 10 mΩ
- Insulation resistance : 1000 MΩ min

MECHANICAL for LF Contacts

- Mechanical operations : 500 cycles min. up to 2500.
- Contact insertion and withdrawal force : 2 N max. / 0.2 N min.

ENVIRONMENTAL

- Temperature range : From -60°C to +260°C
- Vibration severity : 0.75mm, 10 g RMS 6 hours long random with superimposed sinusoid. No intermittencies measured when using an H.S.L.I. (High Speed Logic Interrupt) detector with a trip threshold of 2 ns.
100g for 6 ms
- Shock severity : HcFc 141 bMGX (ATOCHM) solvent
- Solvent resistance : 96 hrs
- Salt spray test : 56 days @ 90% humidity
- Humidity test



Marking as referenced in the CMM catalogue pages 12 & 13

2	04/03/09	H.L.	E.M.	D.Z.
	Iss	Date	Drawn	Checked

nicomatic
 www.nicomatic.com
 Mail : nicomatic@nicomatic.fr
 Tel : +33 (0)4.50.36.13.85

Item : Connector CMM200 male straight on PCB, nn LF contacts

Tools recommended	
Latch Separation tool	P/N C14790
Strain relief straps	P/N 13218

Folder : X:\Méthodes\Plans clients\Plans clients 2D\08 - CMM200\Connecteurs mâles\201Y\201Ynn(L)

This document and drawings, sketches, and schematic drawings are the property of the NICOMATIC company, and no parts thereof may be reproduced and used without the written consent of the owner. Law dated 11.03.1902

Catalogue Reference : **201Ynn(L)**

	General tolerance ±0.2	Scale 2:1	Page 1/1
--	------------------------	-----------	----------