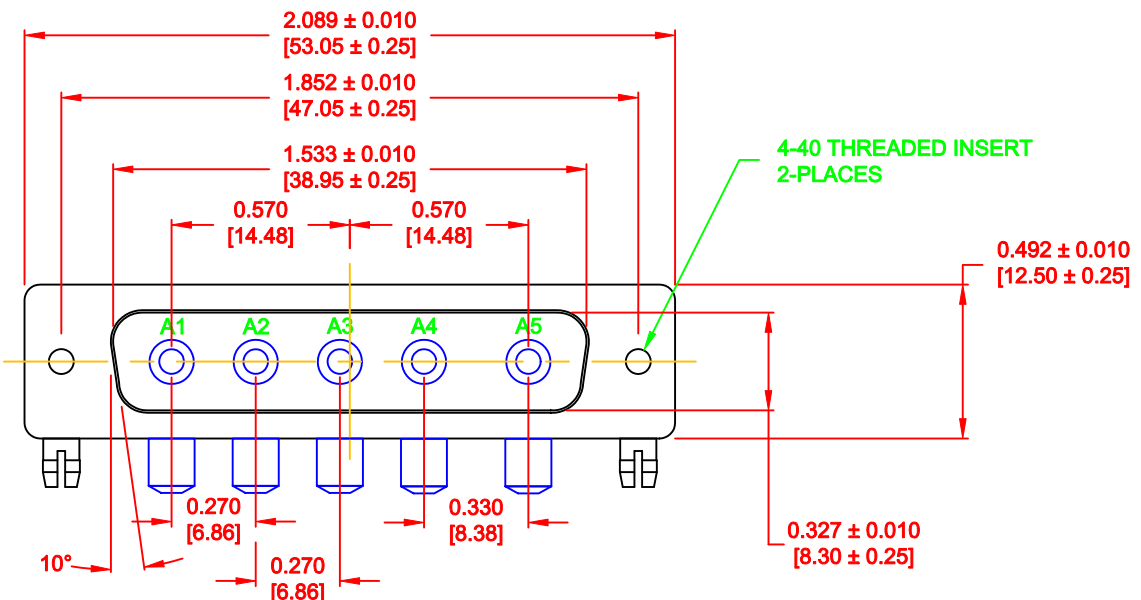


DESCRIPTION: POWER - RIGHT ANGLE - MALE - MACHINED



**SPECIFICATIONS:**

**ELECTRICAL:**

INSULATOR RESISTANCE: 5 G OHMS Min.  
 DIELECTRIC WITHSTANDING: 1,000VAC r.m.s.  
 OPERATING TEMPERATURE: -55° C ~ +155° C  
 CONTACT RESISTANCE: 1.0 Milliohms Max.  
 POWER PINS: 40 AMPS

**MECHANICAL:**

CONTACT INSERTION FORCE: 4.5 Kg Max.  
 CONTACT SEPARATOR FORCE: 0.3Kg Min.

**MATERIALS:**

CONTACTS: COPPER ALLOY  
 INSULATOR: PBT UL94V-0 RATED, BLK 230°C PROCESS TEMP.  
 SHELL: STEEL  
 BOARD LOCK: BRASS, NICKEL PLATED  
 CINCHNUT: BRASS, NICKEL PLATED  
 BRACKET: STEEL, NICKEL PLATED

**FINISH:**

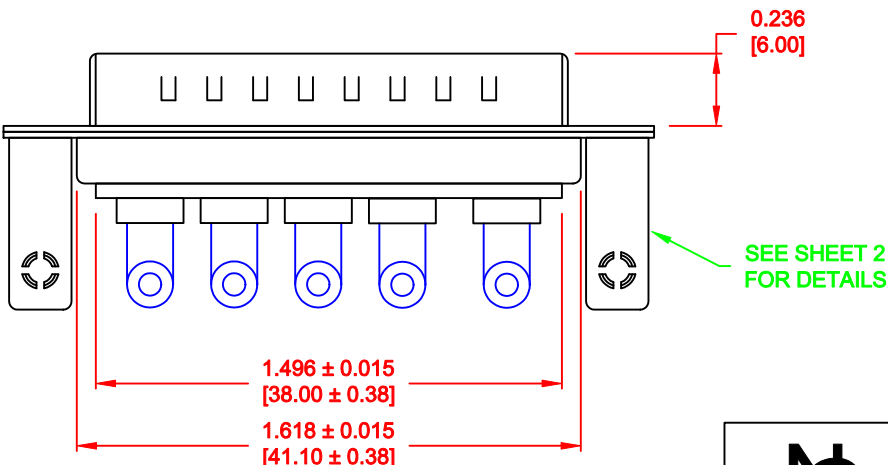
SHELL: NICKEL  
 CONTACTS: FULL GLOLD FLASH


**684M5W5103L461**

46 = 4-40 INSERTS / BOARD LOCKS

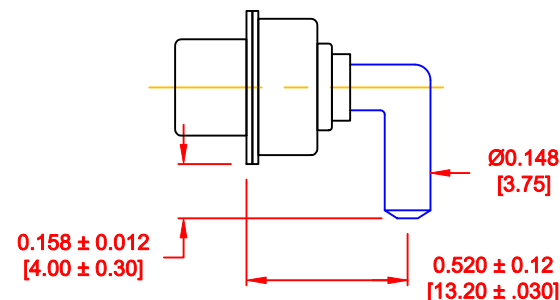
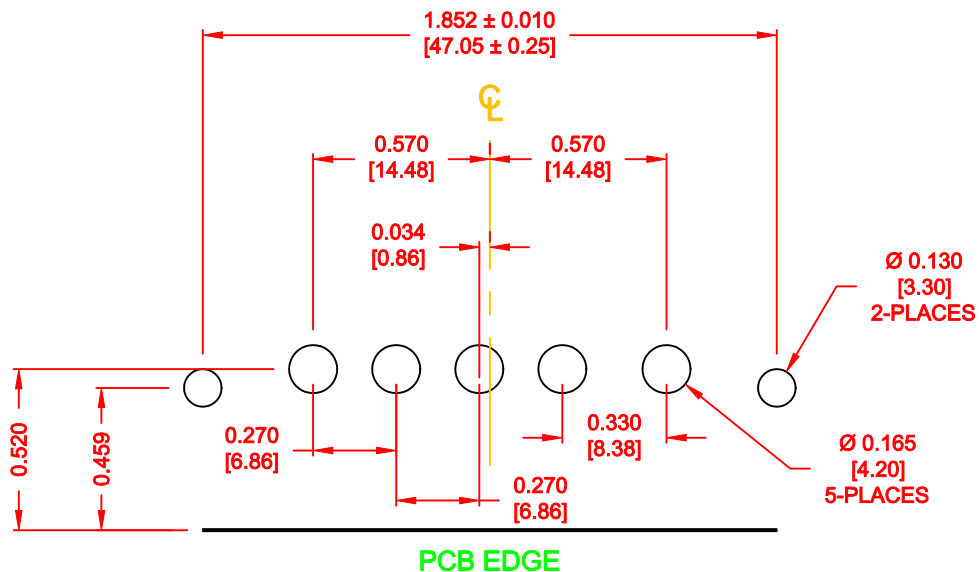
**RoHS COMPLIANT**

$0.031 \pm 0.008$  [0.80 ± 0.20]

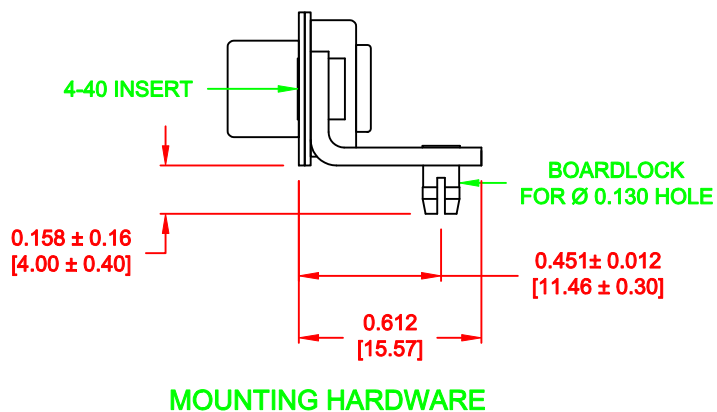


|  |   |                        |                   |               |
|--|---|------------------------|-------------------|---------------|
|  | THESE DRAWINGS AND SPECIFICATIONS ARE THE PROPERTY OF NorComp AND SHALL NOT BE REPRODUCED, COPIED OR USED AS THE BASIS FOR THE MANUFACTURE OR SALE OF APPARATUS WITHOUT WRITTEN PERMISSION. |                        | DRAWN: P. JENKINS | DATE: 8-22-11 |
|  |   |                        | CHECKED:          | DATE:         |
| <b>NorComp</b>   |   | SCALE: 1.5 = 1         | SHEET 1 OF 2      | REV 0         |
|  |   | DWG NO. 684M5W5103L461 |                   |               |

**NOTE:**  
**POWER CONTACTS COME**  
**PRE-LOADED INTO INSULATORS**




**40 AMP POWER CONTACT**



**MOUNTING HARDWARE**

**RoHS COMPLIANT**

|  |   |  |                            |                         |                |                 |
|--|---|--|----------------------------|-------------------------|----------------|-----------------|
|  | THESE DRAWINGS AND SPECIFICATIONS ARE THE PROPERTY OF NorComp AND SHALL NOT BE REPRODUCED, COPIED OR USED AS THE BASIS FOR THE MANUFACTURE OR SALE OF APPARATUS WITHOUT WRITTEN PERMISSION. |  | DRAWN:<br><b>P.JENKINS</b> | DATE:<br><b>8-22-11</b> |                |                 |
|  | <h1>NorComp</h1>  |  |                            | CHECKED:                | DATE:          |                 |
| SCALE:<br><b>1.5 = 1</b>   |   |  |                            | SHEET<br><b>2</b>       | OF<br><b>2</b> | REV<br><b>0</b> |
| DWG NO. <b>684M5W5103L461</b>  |   |  |                            |                         |                |                 |