

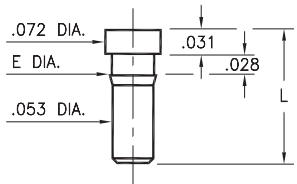
# MALE PCB PINS

## PRINTED CIRCUIT PINS

### 0259/0286/1941

XXXX-0-00-XX-00-00-03-0

Press-fit in .057/.059 mounting hole  
0286-0 is available on 16mm wide carrier tape; 2,500 parts per 13" reel.  
See page 224.3 for Tape & Reel details



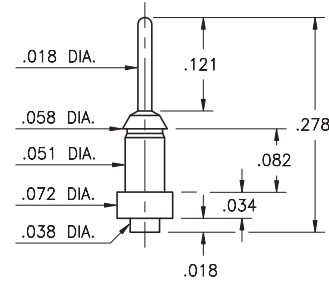
Basic Part Number	Length L	Barb Dia. E	Mounting Hole
0259-0	.173	.062	.059
0286-0	.115	.060	.057
*1941-0	.169	.058	.056

\* Flat face Target contact

### 2956-0

2956-0-00-XX-00-00-03-0

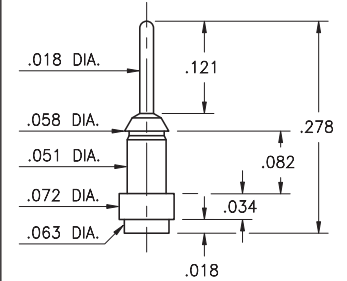
Surface mount



### 2956-1

2956-1-00-XX-00-00-03-0

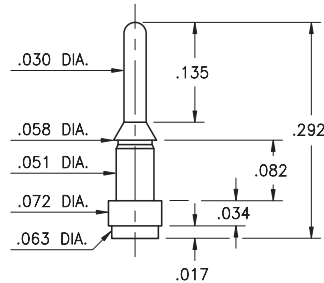
Surface mount



### 4956-1

4956-1-00-XX-00-00-33-0

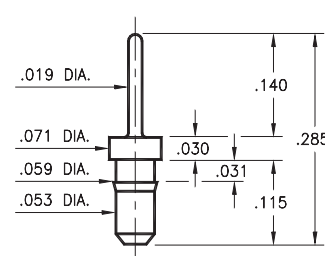
Surface mount



### 8876

8876-0-00-XX-00-00-03-0

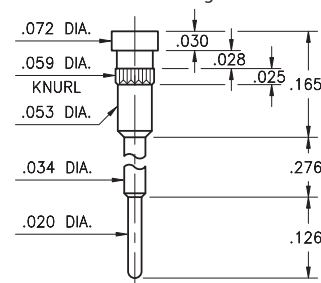
Press-fit in .057 mounting hole



### 1938

1938-0-00-XX-00-00-03-0

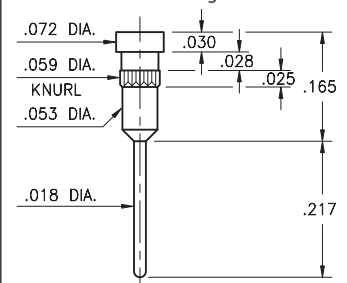
Flat face Target contact, solder Tail



### 1940

1940-0-00-XX-00-00-03-0

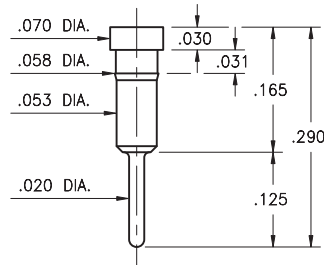
Flat face Target contact, solder Tail



### 1942

1942-0-00-XX-00-00-03-0

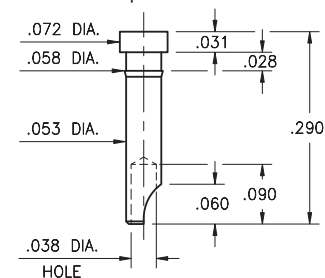
Flat face Target contact, solder Tail  
Press-fit in .056 mounting hole



### 3024

3024-0-01-XX-00-00-03-0

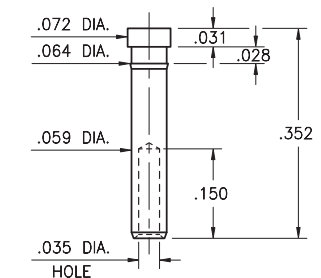
Flat face Target contact, solder cup  
Press-fit in .056 mounting hole  
For wire sizes up to 22 AWG



### 3000

3000-0-00-XX-00-00-03-0

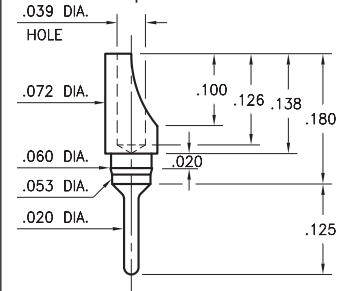
Flat face Target contact, wire termination  
Press-fit in .061 mounting hole. Accepts wire sizes 24 AWG Max. / 28 AWG Min.



### 3080

3080-0-01-XX-00-00-03-0

Press-fit in .057 mounting hole  
For wire sizes up to 22 AWG



#### SPECIFICATIONS:

**Pin Material:** Brass Alloy 360, 1/2 Hard  
(Except swage pins which are annealed)

**Dimensions:** Inches

**Tolerances On:** Lengths: ±.005  
Diameters: ±.002  
Angles: ±2°



ORDER CODE: XXXX - X - 0X - XX - 00 - 00 - XX - 0

BASIC PART #

SPECIFY PIN FINISH:

- 01 200 μ" TIN/LEAD OVER NICKEL
- ◆ 80 200 μ" TIN OVER NICKEL (RoHS)
- ◆ 15 10 μ" GOLD OVER NICKEL (RoHS)
- ◆ 21 20 μ" GOLD OVER NICKEL (RoHS)
- ◆ 34 50 μ" GOLD OVER NICKEL (RoHS)

