

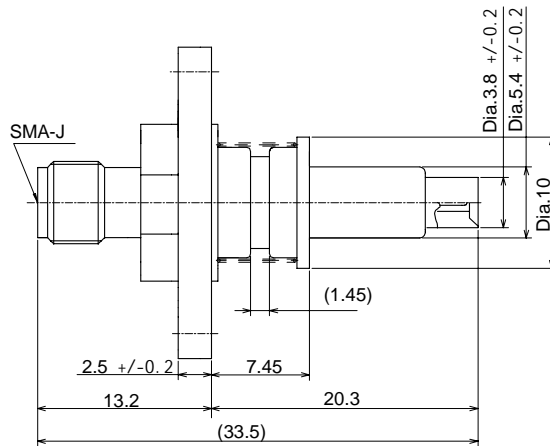
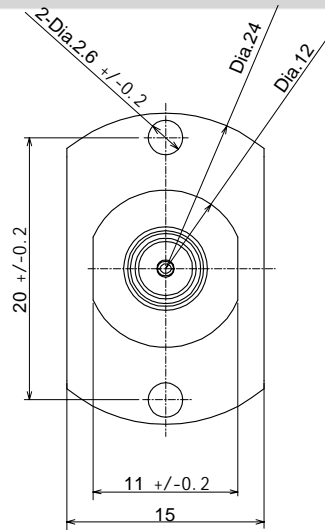
SWD Probe

Automatic measurement probe



Mechanical

Performance

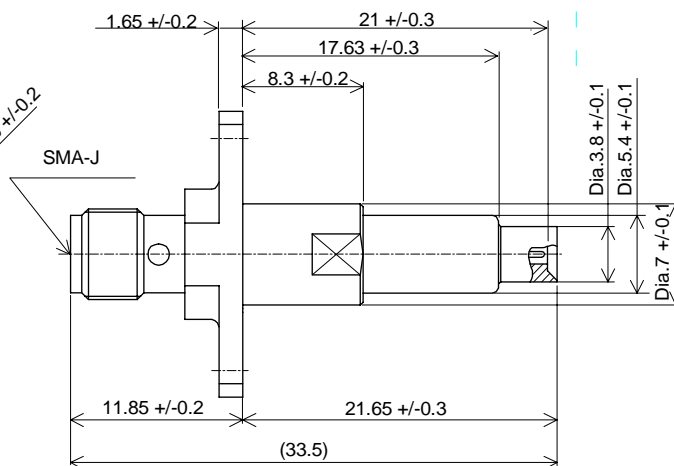
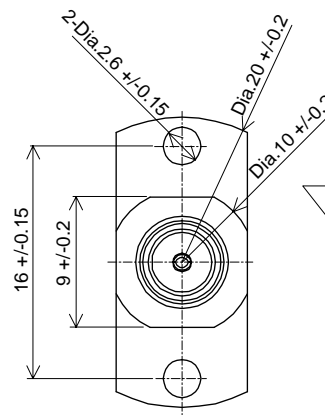


Otherwise Specified: +/-0.5 mm

Part # : MM126037

Dimension : mm

Item	Specification	
Frequency Rating	DC to 6GHz	
Nominal Impedance	50 ohm	
Temperature Range	-40 to +90 degree C	
Voltage Rating	250V r.m.s.	
Contact Resistance	20m ohm max.	
Withstanding Voltage	AC300V	
Insulation Resistance	500M ohm min.	
V.S.W.R.	DC to 3GHz	1.6 max.
	3 to 6GHz	2.0 max.
Insertion Loss	DC to 3GHz	0.6dB max.
	3 to 6GHz	1.5dB max.
Durability	1,000,000 cycles	



Part # : MM126036

Dimension : mm

Supplementation

MM126036: (Low cost version)

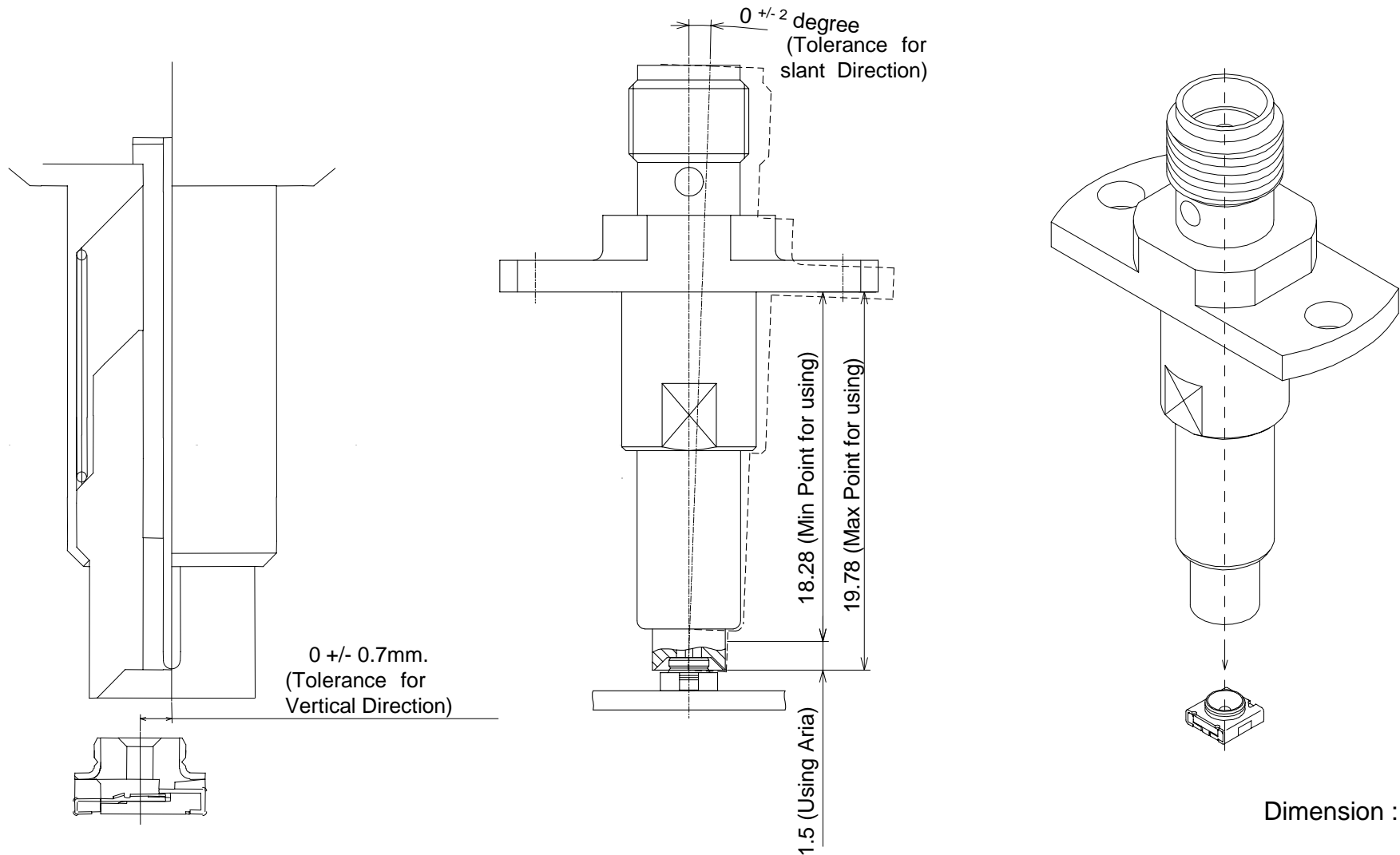
Floating mechanism is not attached within the probe.
The jig must be attached floating mechanism.

MM126037:

Floating mechanism is attached within the probe.
Floating mechanism is not necessary to the jig.

SWD Probe Using method

MM126036 (Automatic measurement probe)

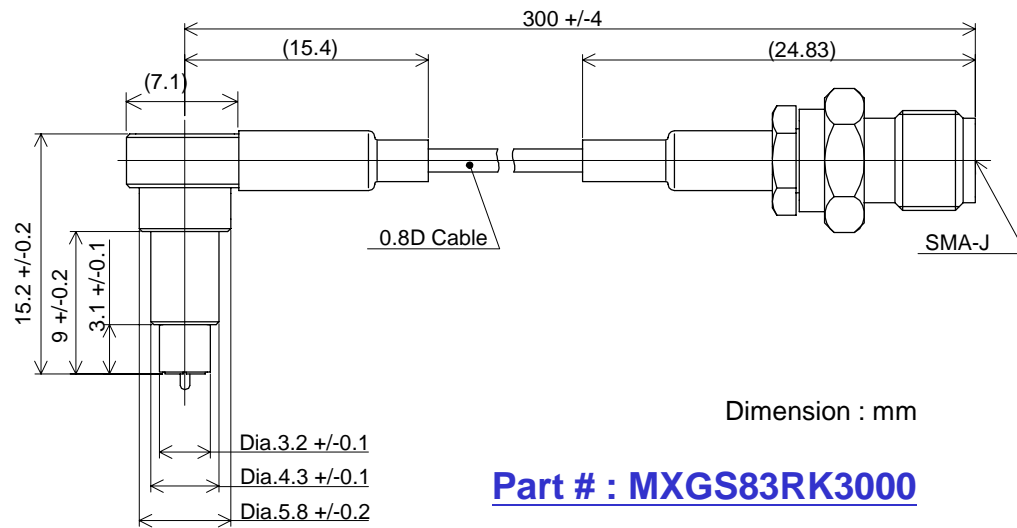


SWD Adapter



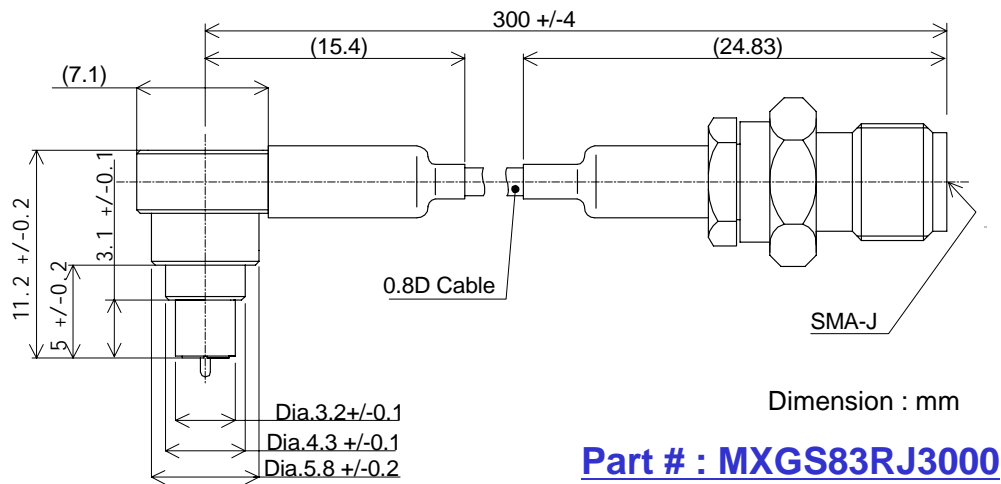
Right angle manual measurement adapter **with locking function**

Mechanical



Performance

Item	Specification	
Frequency Rating	DC to 6GHz	
Nominal Impedance	50 ohm	
Temperature Range	-40 to +90 degree C	
Voltage Rating	250V r.m.s.	
Contact Resistance	20m ohm max.	
Withstanding Voltage	AC300V	
Insulation Resistance	500M ohm min.	
V.S.W.R.	DC to 3GHz	1.3 max.
	3 to 6GHz	1.5 max.
Insertion Loss	DC to 3GHz	1.3dB max.
	3 to 6GHz	2.0dB max.
Durability	10,000 cycles	



"83" Cable's Construction

Item	Unit	Construction	
Inner Conductor	No. and Dia.	7/0.102	
	Total Dia.	0.305	
Insulator	Total Dia.	0.84	
Outer Conductor	Dir. of Wire	0.08	
	Total Dia.	1.24	
Overall Dia.	(mm)	1.48	
Nominal Insertion Loss	at 0.96 GHz	(dB/m)	1.68
	at 3 GHz	(dB/m)	3.1