

INTERCONNECTS

SERIES 316 • 2,54 GRID ELEVATED • SINGLE ROW STRIPS

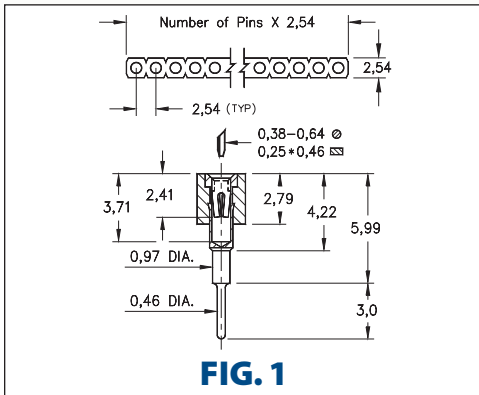


FIG. 1

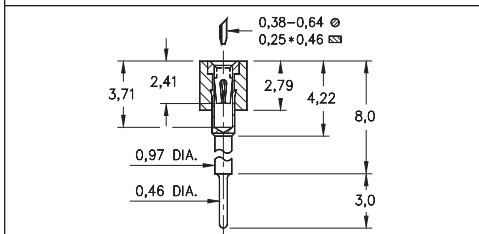


FIG. 2

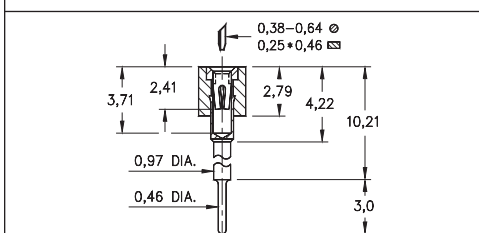


FIG. 3

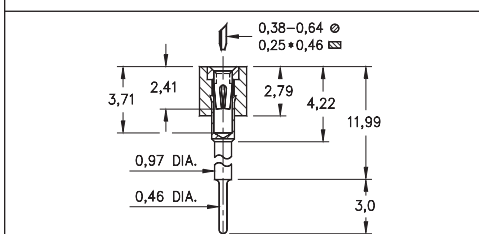


FIG. 4

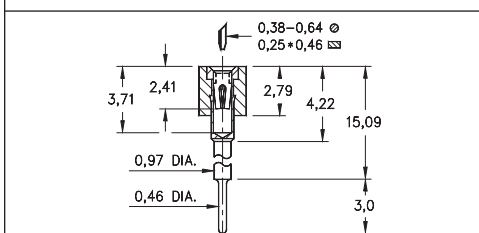


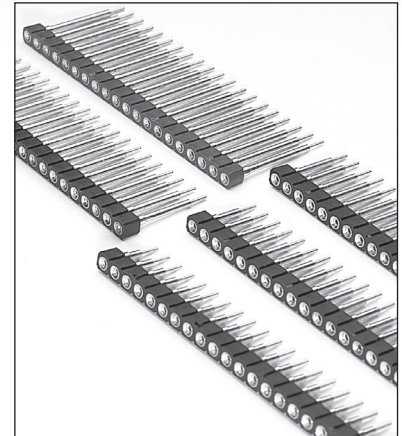
FIG. 5

- Elevated socket strips are available in 5 different heights:

316...006 uses pin # 0153-1
 316...003 uses pin # 0153-2
 316...007 uses pin # 0153-3
 316...008 uses pin # 0153-4
 316...001 uses pin # 0153-5
 See page 167 for details

- Hi-Rel, 4-finger BeCu #30 contact is rated at 3 amps. See page 253 for details

- Insulators are high temperature thermoplastic, suitable for all soldering operations



ORDERING INFORMATION

	Series 316...006	Standoff Height = 5,99
FIG. 1	316-XX-1	-41-006000
	Specify number of pins	01-64
	Series 316...003	Standoff Height = 8,0
FIG. 2	316-XX-1	-41-003000
	Specify number of pins	01-64
	Series 316...007	Standoff Height = 10,21
FIG. 3	316-XX-1	-41-007000
	Specify number of pins	01-64
	Series 316...008	Standoff Height = 11,99
FIG. 4	316-XX-1	-41-008000
	Specify number of pins	01-64
	Series 316...001	Standoff Height = 15,09
FIG. 5	316-XX-1	-41-001000
	Specify number of pins	01-64



XX=Plating Code
See Below

For
Electrical, Mechanical
& Environmental Data,
See page 264

SPECIFY PLATING CODE XX=	91	93	41	43
Sleeve (Pin)	5,08µm Sn/Pb	5,08µm Sn/Pb	5,08µm Sn	5,08µm Sn
Contact (Clip)	0,25µm Au	0,76µm Au	0,25µm Au	0,76µm Au

