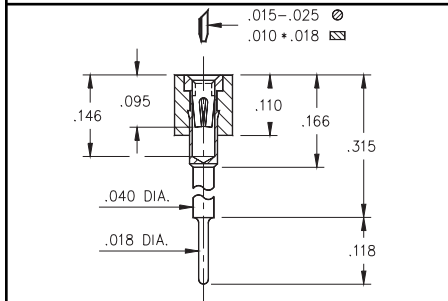
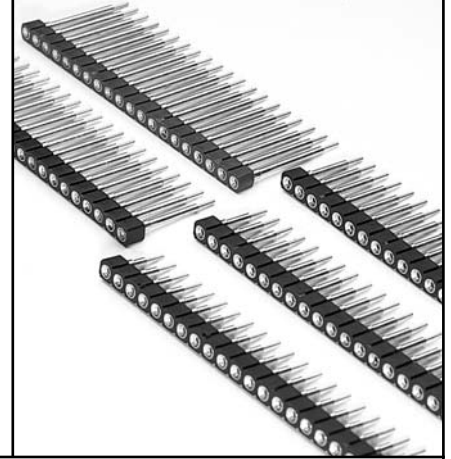
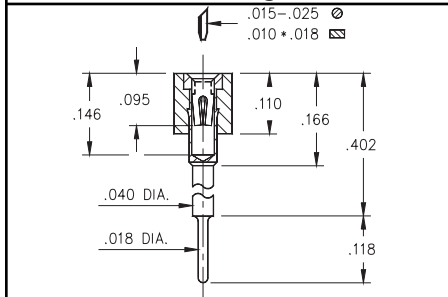


**Fig. 1**

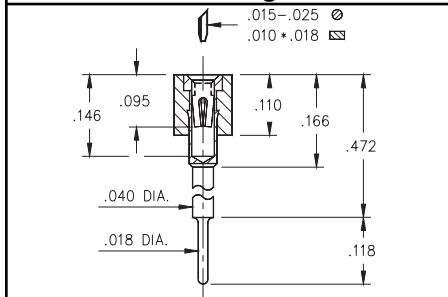
- Elevated socket strips are available in 5 different heights.
  - 316...006 uses pin # 0153-1
  - 316...003 uses pin # 0153-2
  - 316...007 uses pin # 0153-3
  - 316...008 uses pin # 0153-4
  - 316...001 uses pin # 0153-5
- Hi-Rel, 4-finger BeCu #30 clip rated at 3 amps. See page 208 for details.



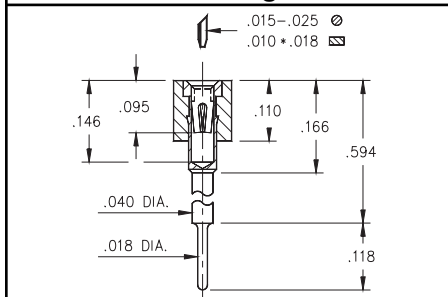
**Fig. 2**



**Fig. 3**



**Fig. 4**



**Fig. 5**

**Ordering Information**

<b>Fig. 1</b>	<b>Series 316...006</b> Standoff Height = .236
	316-XX-1__-41-006000 Specify # of pins      →      01-64
<b>Fig. 2</b>	<b>Series 316...003</b> Standoff Height = .315
	316-XX-1__-41-003000 Specify # of pins      →      01-64
<b>Fig. 3</b>	<b>Series 316...007</b> Standoff Height = .402
	316-XX-1__-41-007000 Specify # of pins      →      01-64
<b>Fig. 4</b>	<b>Series 316...008</b> Standoff Height = .472
	316-XX-1__-41-008000 Specify # of pins      →      01-64
<b>Fig. 5</b>	<b>Series 316...001</b> Standoff Height = .594
	316-XX-1__-41-001000 Specify # of pins      →      01-64

**XX=Plating Code**  
See Below



For RoHS compliance, select  $\diamond$  plating code.  
For the all gold option (XX=13) also change part number from 316-XX-1XX-41-00X000 to 316-13-1XX-41-00X100

SPECIFY PLATING CODE XX=	13 $\diamond$	93		43 $\diamond$
Sleeve (Pin)	10 $\mu$ " Au	200 $\mu$ " Sn/Pb		200 $\mu$ " Sn
Contact (Clip)	30 $\mu$ " Au	30 $\mu$ " Au		30 $\mu$ " Au