

**Data sheet****SP046xxVBNC ASP046**

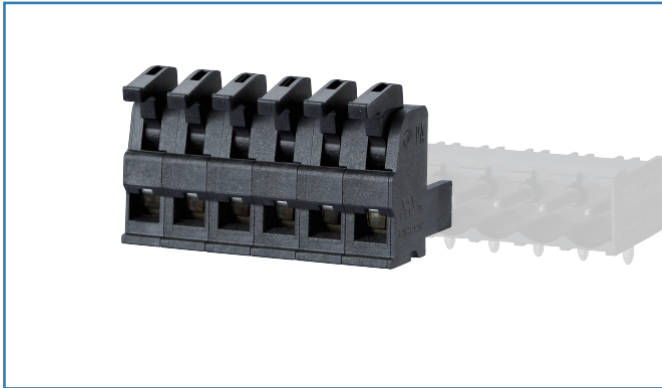
Page 1/4

P/N  
ASP046xx

xx=number of poles

2019/01/14

Version: B

**Illustrations**



See enlarged drawings at the end of document

**Product specification**

- spring clamp terminal block, pluggable
- centerline 5.08 mm, direction of connection vertical 0°
- fittable without loss of poles
- color black
- eccentric lever, wire entry uncodeable side parallel to plug direction



## Technical Data

| General Data  |  |        |        |
|---|--|--------|--------|
| min. number of poles  | 2  |        |        |
| max. number of poles  | 24   |        |        |
| Insulating material class   | CTI 400  |        |        |
| clearance/creepage dist.  | 4 mm   |        |        |
| Min. insul. strip length  | 4 mm   |        |        |
| Overvoltage category  | III  | III    | II     |
| Pollution degree  | 3  | 2      | 2      |
| Rated voltage   | 32 V   | 200 V  | 200 V  |
| Rated test voltage  | 1.5 kV   | 1.5 kV | 1.5 kV |
| Connection Data   |  |        |        |
| rat.wiring solid AWGmax   | 0.08 mm <sup>2</sup> - 1.5 mm <sup>2</sup> / AWG 28 - AWG 16 |        |        |
| rat.wiring strand.AWGmax  | 0.08 mm <sup>2</sup> - 1.5 mm <sup>2</sup> / AWG 28 - AWG 16 |        |        |
| Approvals   |  |        |        |
|  V / A / AWG       | 300 / 10 / 28 - 16   |        |        |
|  1 mm <sup>2</sup> | 250 V / 1.5 kV / 10 A  |        |        |
| Material  |  |        |        |
| insulating material   | PA46   |        |        |
| flammability class  | V0   |        |        |
| REACH - substance (SVHC)  | none   |        |        |
| Climatic Data   |  |        |        |
| upper limit temperature   | 105 °C   |        |        |
| lower limit temperature   | -40 °C   |        |        |
| General   |  |        |        |
| Tolerance   | ISO 2768 -mH   |        |        |

© 2019 METZ CONNECT - Technische Änderungen vorbehalten! Subject to modifications! Sous réserve de modifications techniques!

# U | Contact

Data sheet  
**SP046xxVBNC ASP046**

Page 3/4

P/N  
**ASP046xx**  
xx=number of poles  
2019/01/14  
Version: B

## Accessories

| P/N         | Designation |
|-------------|-------------|
| 700025-01-9 | 700025      |

© 2019 METZ CONNECT - Technische Änderungen vorbehalten! Subject to modifications! Sous réserve de modifications techniques!

## Counterpart

| P/N    | Designation         |
|--------|---------------------|
| 311781 | PR066xxHBBN Typ 178 |
| 311791 | PR066xxVBBN Typ 179 |
| 312191 | PT116xxVBEC Typ 219 |
| 312201 | PT116xxVBBN Typ 220 |
| 312291 | PT116xxHBEC Typ 229 |
| 312301 | PT116xxHBBN Typ 230 |
| 312861 | PT166xxVGDN Typ 286 |
| 312881 | PT166xxHGDN Typ 288 |
| 312901 | PT106xxVGDN Typ 290 |
| 312921 | PT106xxHGDN Typ 292 |
| 314781 | PR066xxHBEC Typ 478 |
| 314791 | PR066xxVBEC Typ 479 |

