

# SERIES 1205 - DOUBLE-POLE SLIDE SWITCHES

TO 10 (6) A 250 V AC

## PRODUCT FEATURES


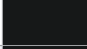




- ◆ Double-pole changeover switch
- ◆ Powerful up to 15 A
- ◆ Dust protected with felt gasket

## ON REQUEST

- ◆ Other colors

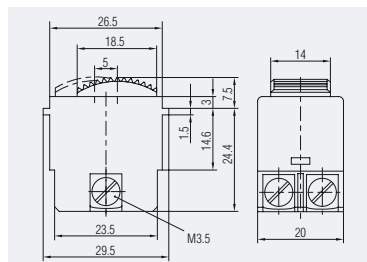
Mechanical life endurance	5E4
Material	actuator PA housing PA / PA glass fiber-reinforced connections silver-plated
Approval marks	
Suitable for appliances of protection class II	




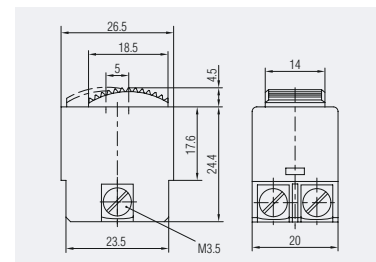
double-pole	Actuator color / printing	Housing color	15 A 125 AC	10 (6) A 250 V AC 1E4	Connection type	Connection description	Contact material	Stock version
<b>Changeover switch (DPDT)</b>								
1205.0304			●			M3.5	Ag	
1205.0101				●		M3.5	Ag	●




Basic type 1205



 Screw connection M3.5  
1205.0101



 Screw connection M3.5  
1205.0304 without collar

ROCKER SWITCHES  
PUSHBUTTON SWITCHES  
TOGGLE SWITCHES  
**SLIDE SWITCHES**  
ROTARY SWITCHES  
FOOT SWITCHES  
POWER TOOL SWITCHES  
TACT AND KEY SWITCHES  
SNAP-ACTION SWITCHES  
MICRO-SIGNAL SWITCHES  
SENSORS