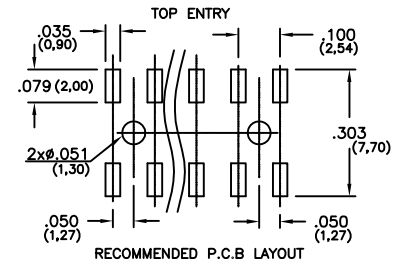
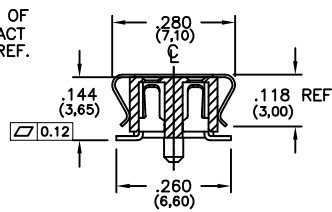
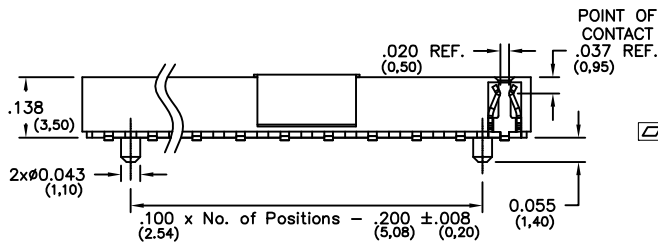
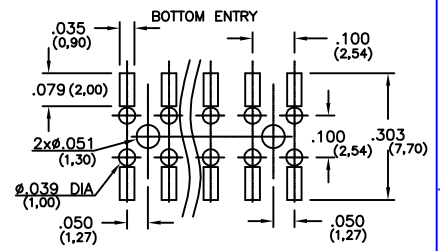
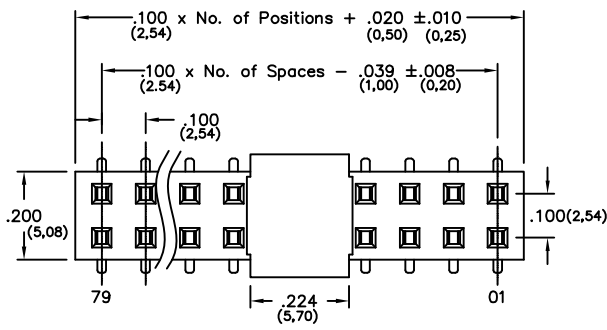


# Major League Electronics .100cl Low Profile Surface Mount Box Contact - Vertical



RECOMMENDED P.C.B LAYOUT

Tails may be clipped to achieve desired pin length

## Ordering Information

LSMBC-1  -D-02- -V- - - - - - -LF

Pins Per Row  03 - 40  
 Row Specification  D = Dual Row  
 Surface Mount   
 Lead Free   
 Alignment Pin  Leave blank if not needed  
 AP = With

Plating Options	
30µ Gold on Contact Area / Matte Tin on Tail	H
Matte Tin all Over	T
10µ Gold on Contact Area / Matte Tin on Tail	GT
10µ Gold on Contact Area / Flash on Tail	G
Gold Flash over Entire Pin	F

Packing Information  
 TR-P = Tape and Reel with Plastic Pick and Place pad  
 TB-P = Tube with Plastic Pick and Place pad  
 TB-0 = Tube without Pick and Place pad  
 If left blank, packaging at MLE's discretion  
 Pad may be metal, mylar or plastic

Polarized Position  
 Leave blank if not needed  
 If required, specify empty pin position, e.g. 012 for Pin 12

Vertical

## Specifications

Insertion Depth: .070 (1,78) to .135 (3,43)  
 .102 (2,59) for bottom entry

Insertion Force - Per Contact - H Plating:

2oz. (0,56N) avg with .025 (0,64mm) sq. pin

Withdrawal Force - Per Contact - H Plating:

1.6oz. (0,44N) avg with .025 (0,64mm) sq. pin

Current Rating: 3.0 Ampere

Insulation Resistance: 1000MΩ Min.

Dielectric Withstanding: 600V AC

Contact Resistance: 20 mΩ Max.

Operating Temperature: -40°C to + 105°C

Max. Process Temperature:

Peak: 260°C up to 20 secs.

Process: 230°C up to 30 secs.

Reflow: 260°C up to 10 secs.

## Materials

Contact Material: Phosphor Bronze

Insulator Material: Polyester, UL94V-0

LCP+30%G.F., Black

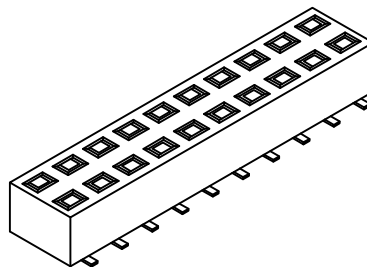
Plating: Au or Sn over 50µ" (1,27) Ni

Products cut to specific sizes are uncancellable/nonreturnable

Parts are subject to change without notice

## Mates with:

BSTC, TSHCR,  
 BSTCM, TSHCRE,  
 BSTCR, TSHCRSM,  
 BSTCRSM, TSHR,  
 BSTS, TSHRE,  
 LBSTCM, TSHS,  
 LTSHCR, TSHSCM,  
 LTSHCRE, TSHSM,  
 LTSHR, ULTSHSM,  
 LTSHRE, ULTSHC,  
 LTSHSM, ULTSHCR  
 TSHC,



UNLESS OTHERWISE SPECIFIED  
 DIMENSIONS IN INCHES (MM)  
 TOLERANCES ARE:

NO PLACE DECIMALS ±0.30  
 ONE PLACE DECIMALS ±0.25  
 TWO PLACE DECIMALS ±0.15  
 THREE PLACE DECIMALS ±0.10

ANGLES  
 NO PLACE DECIMALS ±5.0°  
 ONE PLACE DECIMALS ±3.0°  
 TWO PLACE DECIMALS ±2.0°  
 THREE PLACE DECIMALS ±1.0°

LSMBC-1-DV SERIES

.100cl Low Profile - Vertical  
 Surface Mount Box Contact

29 JAN 07

Scale  
 NTS



4235 Earnings Way, New Albany, Indiana, 47150, USA  
 1-800-782-3486 (USA/Canada/Mexico)  
 Tel: 812-944-7244  
 Fax: 812-944-7268  
 E-mail: mle@mlelectronics.com  
 Web: www.mlelectronics.com

Revision  
 C

Sheet  
 1/2


# Revisions

Revision B - (10th Oct 2008)

Release of new drawing featuring alignment pin,  
Change to tolerances and specification

Revision C - (21st Apr 2009)

Current Rating changed from 1.0 Ampere  
to 3.0 Ampere

<small>UNLESS OTHERWISE SPECIFIED DIMENSIONS IN INCHES (MM) TOLERANCES ARE:</small>  <small>NO PLACE DECIMALS <math>\pm 0.30</math> ONE PLACE DECIMALS <math>\pm 0.25</math> TWO PLACE DECIMALS <math>\pm 0.15</math> THREE PLACE DECIMALS <math>\pm 0.10</math></small>  <small>ANGLES</small> <small>NO PLACE DECIMALS <math>\pm 5.0^\circ</math> ONE PLACE DECIMALS <math>\pm 3.0^\circ</math> TWO PLACE DECIMALS <math>\pm 2.0^\circ</math> THREE PLACE DECIMALS <math>\pm 1.0^\circ</math></small>	LSMBC-1-DV SERIES	.100cl Low Profile - Vertical Surface Mount Box Contact	29 JAN 07	Scale NTS	
		4235 Earnings Way, New Albany, Indiana, 47150, USA 1-800-782-3486 (USA/Canada/Mexico) Tel: 812-944-7244 Fax: 812-944-7268 E-mail: mle@mlelectronics.com Web: www.mlelectronics.com			Revision C
					Sheet 2/2