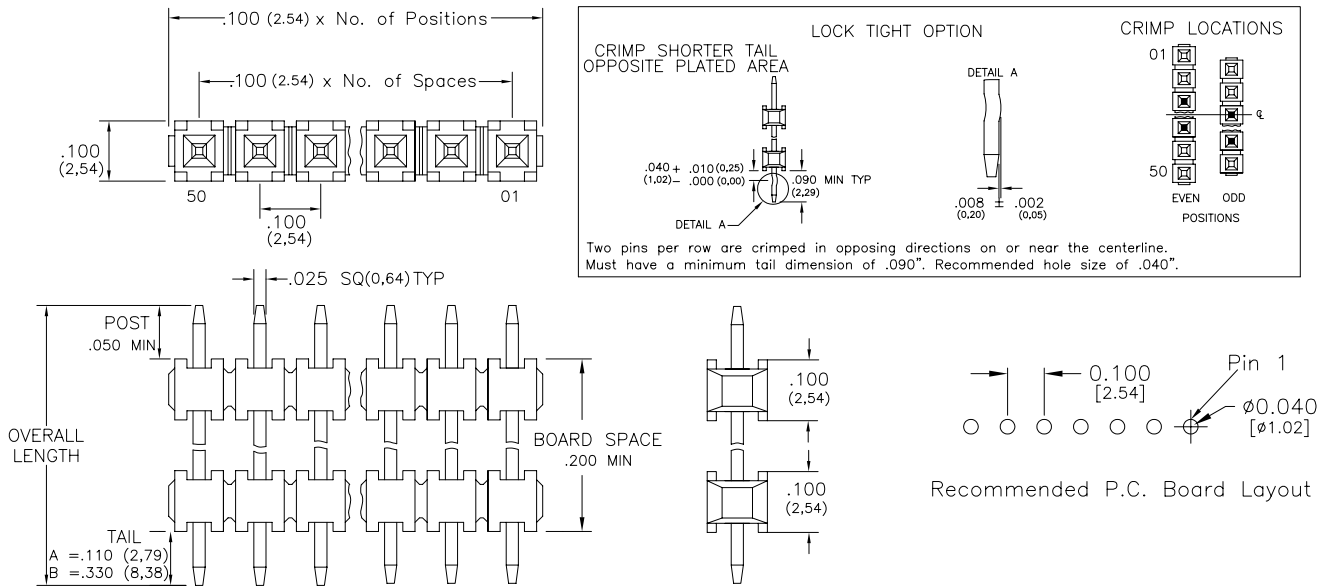


# Major League Electronics .100 cl Board Stacker Terminal Strips



Tails may be clipped to achieve desired pin length

## Ordering Information

BSTS-1 [XX] - S - [X] - [X] - [X] - [X] - [X] - [X] - [X] - LF

Pins Per Row  
01 - 50

Row Specification  
S = Single Row

Tail Length  
A = .110 (2.79)  
B = .330 (8.38)

Lead Free

Polarized Position  
Leave blank if not needed  
If required, specify empty pin position, e.g. 012 for Pin 12

Lock Tight "LT" (Optional)  
Leave blank if not needed  
LT = With

Desired Board Space  
Please specify required space  
E.g. .100 (2.54) = 100  
.200 (5.08) Minimum

Not available with .330 (8.38) Tail

Pin Option		
Length		
.430	10.92mm	06
.445	11.30mm	08
.456	11.58mm	10
.480	12.19mm	11
.530	13.46mm	14
.630	16.00mm	16
.730	18.54mm	20
.830	21.08mm	22
.930	23.62mm	24
1.030	26.16mm	26
1.130	28.70mm	28
1.230	31.24mm	30
1.330	33.78mm	32
1.430	36.32mm	34
1.530	38.86mm	36

### Plating Options

G	- 10μ Gold on Contact area/Flash on Tail
T	- Matte Tin all Over
GT	- 10μ Gold on Contact Area / Matte Tin on Tail
H	- 30μ Gold on Contact Area / Matte Tin on Tail
F	- Gold Flash over Entire Pin

## Specifications

Current Rating: 3.0 Ampere  
 Insulation Resistance: 1000MΩ Min.  
 Dielectric Withstanding: 600V AC  
 Contact Resistance: 20 mΩ Max.  
 Operating Temperature: -40°C to + 105°C  
 Max. Process Temperature:  
 Peak: 260°C up to 20 secs.  
 Process: 230°C up to 60 secs.  
 Wave: 260°C up to 6 secs.  
 Manual Solder: 350°C up to 5 secs.

## Materials

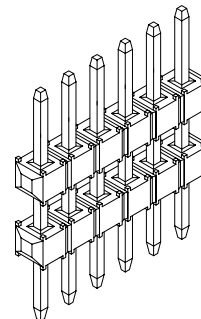
Contact Material: Phosphor Bronze  
 Insulator Material: Nylon 6T  
 Plating: Au or Sn over 50μ" (1,27) Ni

Products cut to specific sizes are uncancelable/nonreturnable

Parts are subject to change without notice

## Mates with:

BCSS,  
 BSSH,  
 BSSHC,  
 BSSQ,  
 BSSQC,  
 BSSQM,  
 LBCSS,  
 LSMBC,  
 LSWS,  
 SMBC,  
 SSHQ,  
 SSHQR,  
 SSHR,  
 SSSH,  
 SSSHM



BSTS-1-S SERIES

.100 cl Single Row  
Board Stacker Terminal Strips

08 JAN 07

Scale  
NTS

UNLESS OTHERWISE SPECIFIED  
DIMENSIONS IN INCHES (MM)  
TOLERANCES ARE:

ONE PLACE DECIMALS ±.100  
 TWO PLACE DECIMALS ±.010  
 THREE PLACE DECIMALS ±.005  
 FOUR PLACE DECIMALS ±.0020  
 ANGLES  
 ±5°



4235 Earnings Way, New Albany, Indiana, 47150, USA  
 1-800-782-3486 (USA/Canada/Mexico)

Tel: 812-944-7244  
 Fax: 812-944-7268

E-mail: mle@mlelectronics.com  
 Web: www.mlelectronics.com

Edition  
1

Sheet  
1/1