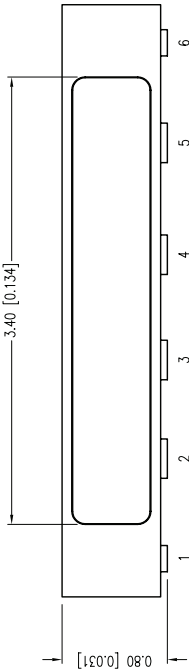
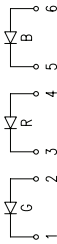
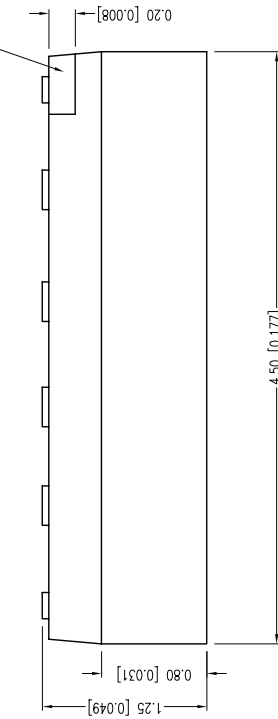


POLARITY MARK



ELECTRO-OPTICAL CHARACTERISTICS $T_a=25^{\circ}\text{C}$ $I_f=20\text{mA}$

| PARAMETER | MIN | TYP | MAX | UNITS | TEST COND |
|-------------------------|----------------|--------------|-------------|--------------------|----------------------|
| PEAK WAVELENGTH (R/G/B) | | 632/518/468 | | nm | |
| FORWARD VOLTAGE (R/G/B) | | 2.0/3.3/3.3 | 2.4/3.7/3.7 | Vf | $I_f=100\mu\text{A}$ |
| REVERSE VOLTAGE | 5.0 | | | Vr | $I_f=20\text{mA}$ |
| AXIAL INTENSITY (R/G/B) | | 600/1000/250 | | mcd | |
| VIEWING ANGLE | | 120 | | $2x \theta_{half}$ | |
| EMITTED COLOR: | RED/GREEN/BLUE | | | | |
| LENS FINISH: | WATER CLEAR | | | | |

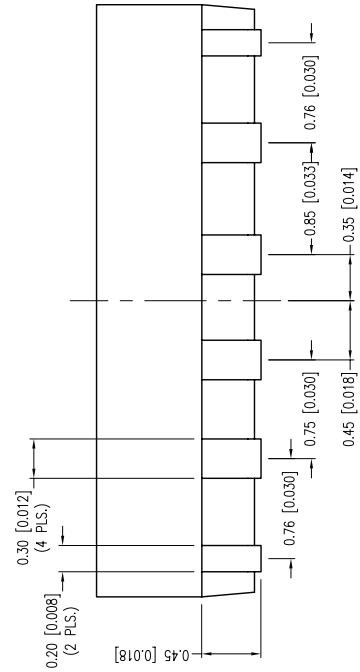
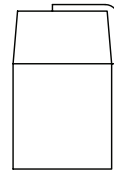
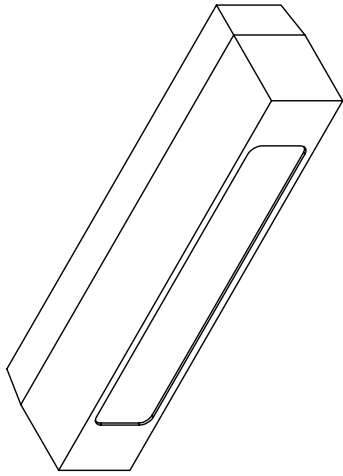
LIMITS OF SAFE OPERATION AT 25°C

| PARAMETER | MAX | UNITS |
|----------------------------------|-------------|------------------------|
| PEAK FORWARD CURRENT* | 100 | mA |
| STEADY CURRENT (R/G/B) | 50/30/30 | mA |
| POWER DISSIPATION (R/G/B) | 130/110/110 | mW |
| DERATE FROM 25°C | -1.2 | mW/ $^{\circ}\text{C}$ |
| OPERATING TEMP. | -40 TO +85 | $^{\circ}\text{C}$ |
| STORAGE TEMP. | -40 TO +85 | $^{\circ}\text{C}$ |

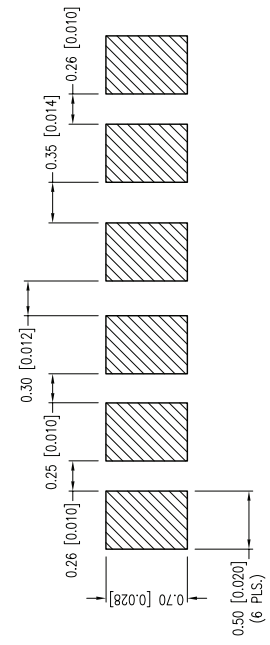
* $t < 10\mu\text{s}$

CAUTION: MOISTURE SENSITIVE DEVICE
PER JEDEC LEVEL 2 STANDARDS

CAUTION: STATIC SENSITIVE DEVICE
FOLLOW PROPER E.S.D. HANDLING PROCEDURES
WHEN WORKING WITH THIS PART.



RECOMMENDED SOLDER PAD LAYOUT



*UNLESS OTHERWISE SPECIFIED TOLERANCES PER DECIMAL PRECISION ARE: X=±1 (±0.039), X.X=±0.5 (±0.020), X.XX=±0.25 (±0.010), X.XXX=±0.127 (±0.005), LEAD SIZE=±0.05 (±0.002), LEAD LENGTH=±0.75 (±0.030), MIN=-0.00, DECIMAL PRECISION MAX.=+0.00, DECIMAL PRECISION MIN=-0.00

4.5mm x 0.8mm PCB RIGHT ANGLE SURFACE MOUNT LED, FULL COLOR RGB, WATER CLEAR, TAPE & REEL.

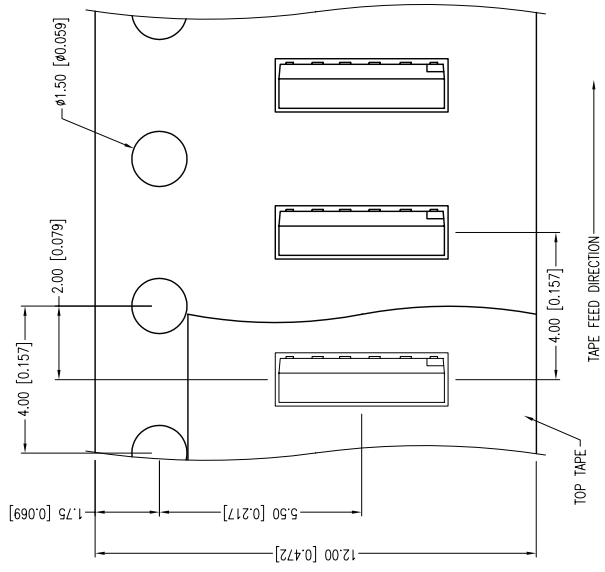
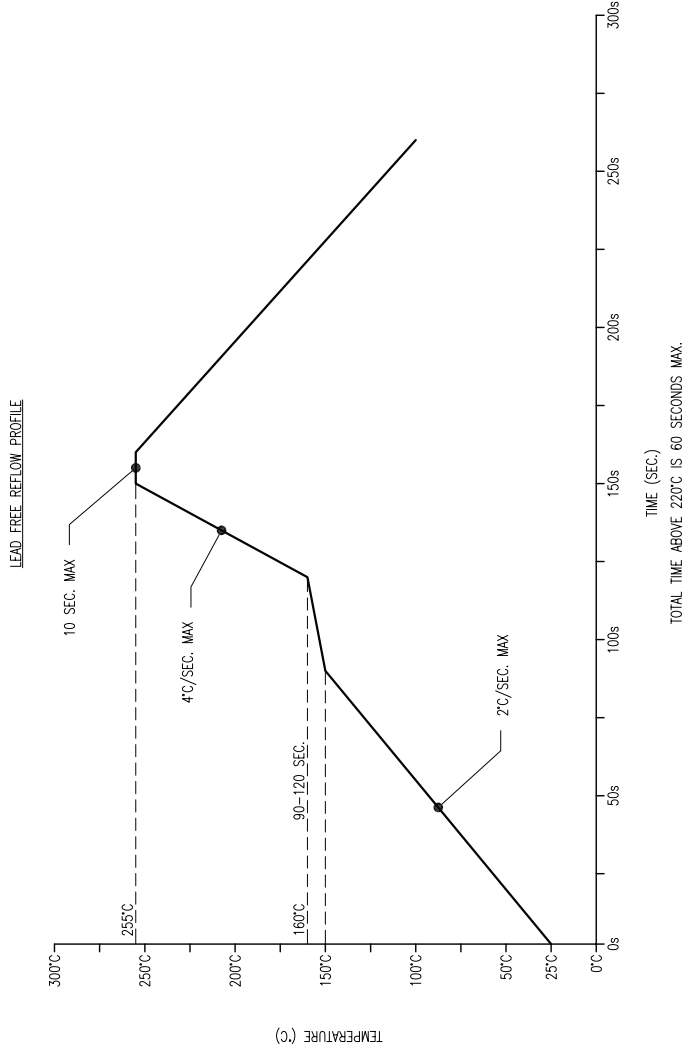
DATE: 02.22.12 DRAWN BY: AB
 PAGE: 1 OF 2 CHKD BY: DT
 SCALE: NTS APRVD BY: DT
 UNIT: mm [INCH]

UNCONTROLLED DOCUMENT

290 E. HELEN ROAD
 PALATINE, IL 60067-6976
 PHONE: +1.847.359.2790
 FAX: +1.847.359.6538
 WEB: WWW.LUMEX.COM
 MEMBER OF ITW PHOTONICS GROUP

LUMEX
 Creating LED and LCD Solutions Together™

CONFIDENTIAL INFORMATION
 THE INFORMATION CONTAINED IN THIS DOCUMENT IS THE PROPERTY OF LUMEX INC. EXCEPT AS SPECIFICALLY AUTHORIZED IN WRITING BY LUMEX INC., THE HOLDER OF THIS DOCUMENT SHALL KEEP ALL INFORMATION CONTAINED HEREIN CONFIDENTIAL AND SHALL PROTECT SAME IN WHOLE OR IN PART FROM DISCLOSURE AND DISSEMINATION TO ALL THIRD PARTIES.
 THE SPECIFICATIONS MAY CHANGE AT ANY TIME WITHOUT NOTICE DUE TO NEW MATERIALS OR PRODUCT IMPROVEMENT.



TOTAL TIME ABOVE 220°C IS 60 SECONDS MAX.

| | | | |
|--|--|------------------------------|---------------------|
| <p>*UNLESS OTHERWISE SPECIFIED TOLERANCES PER DECIMAL PRECISION ARE: X=±1 (±0.039), X.X=±0.5 (±0.020), X.XX=±0.25 (±0.010), X.XXX=±0.127 (±0.005), LEAD SIZE=±0.05 (±0.002), LEAD LENGTH=±0.75 (±0.030), MIN= -DECIMAL PRECISION MAX.= +DECIMAL PRECISION MIN= -DECIMAL PRECISION</p> | | <p>UNCONTROLLED DOCUMENT</p> | |
| <p>230 E. HELEN ROAD PALATKA, IL 60067-6976 PHONE: +1.847.359.2790 FAX: +1.847.359.6538 WEB: WWW.LUMEX.COM MEMBER OF ITW PHOTONICS GROUP</p> | | <p>DATE: 02.22.12</p> | <p>DRAWN BY: AB</p> |
| <p>4.5mm x 0.8mm PCB RIGHT ANGLE SURFACE MOUNT LED, FULL COLOR RGB, WATER CLEAR, TAPE & REEL.</p> | | <p>PAGE: 2 OF 2</p> | <p>CHKD BY: DT</p> |
| <p>***THE SPECIFICATIONS MAY CHANGE AT ANY TIME WITHOUT NOTICE DUE TO NEW MATERIALS OR PRODUCT IMPROVEMENT.** CONFIDENTIAL INFORMATION THE INFORMATION CONTAINED IN THIS DOCUMENT IS THE PROPERTY OF LUMEX INC. EXCEPT AS SPECIFICALLY AUTHORIZED IN WRITING BY LUMEX INC., THE HOLDER OF THIS DOCUMENT SHALL KEEP ALL INFORMATION CONTAINED HEREIN CONFIDENTIAL AND SHALL PROTECT SAME IN WHOLE OR IN PART FROM DISCLOSURE AND DISSEMINATION TO ALL THIR PARTIES.</p> | | <p>SCALE: NTS</p> | <p>APRVD BY: DT</p> |
| | | <p>UNIT: mm [INCH]</p> | <p>(R)</p> |

