



Ordering number CA11929_LR2-RS

Family	Leila	FWHM	11 degrees
Type	Assembly	Efficiency	94 %
LED	LUXEON Rebel ES	cd/lm	-
Color	White	Gerber File	Available
Diameter	21.6 mm		
Height	14.3 mm		
Style	Round		
Optic Material	PMMA		
Holder Material	PC		
Fastening	Pin, tape		
Status	Ready		



Ordering number CA12629_LR2-O-90

Family	Leila	FWHM	13+36 degrees
Type	Assembly	Efficiency	92 %
LED	LUXEON Rebel ES	cd/lm	4.700
Color	White	Gerber File	Available
Diameter	21.6 mm		
Height	14.5 mm		
Style	Round		
Optic Material	PMMA		
Holder Material	PC		
Fastening	Pin, tape		
Status	Ready		



Ordering number CA11930_LR2-D

Family	Leila	FWHM	14 degrees
Type	Assembly	Efficiency	92 %
LED	LUXEON Rebel ES	cd/lm	-
Color	White	Gerber File	Available
Diameter	21.6 mm		
Height	14.3 mm		
Style	Round		
Optic Material	PMMA		
Holder Material	PC		
Fastening	Pin, tape		
Status	Ready		



Ordering number CA11931_LR2-M

Family	Leila	FWHM	22 degrees
Type	Assembly	Efficiency	92 %
LED	LUXEON Rebel ES	cd/lm	-
Color	White	Gerber File	Available
Diameter	21.6 mm		
Height	14.3 mm		
Style	Round		
Optic Material	PMMA		
Holder Material	PC		
Fastening	Pin, tape		
Status	Ready		



PRODUCT DATASHEET

Leila series

last update 12/9/2012



NOTE: The typical divergence will be changed by different color, chip size and chip position tolerance. The typical total divergence is the full angle measured where the luminous intensity is half of the peak value.



PRODUCT DATASHEET

Leila series

last update 12/9/2012



GENERAL INFORMATION

- Product series especially designed & optimized for LUXEON Rebel ES series of LEDs.
- Special care taken to make light distribution as uniform as possible.
- Lens material optical grade PMMA with high UV and temperature resistance (105 degrees of Celcius / 220 degrees of Fahrenheit). Allows use of high current and temperature conditions.

Please find more information about used material from below:

http://ledil.fi/sites/default/files/Documents/Technical/Material/PMMA%20N%20UL94_Yellow%20Card.pdf

<http://ledil.fi/sites/default/files/Documents/Technical/Material/PMMA%20N%20PLEXIGLAS-Datasheet.pdf>

- Optic holder molded by high quality PC material (120 dergees of Celcius / 248 degrees of Fahrenheit).

- Fastening to heat sink with a PU foam adhesive tape of automotive grade. Please find fastening details by clicking link: http://www.ledil.com/datasheets/DataSheet_TAPE.pdf

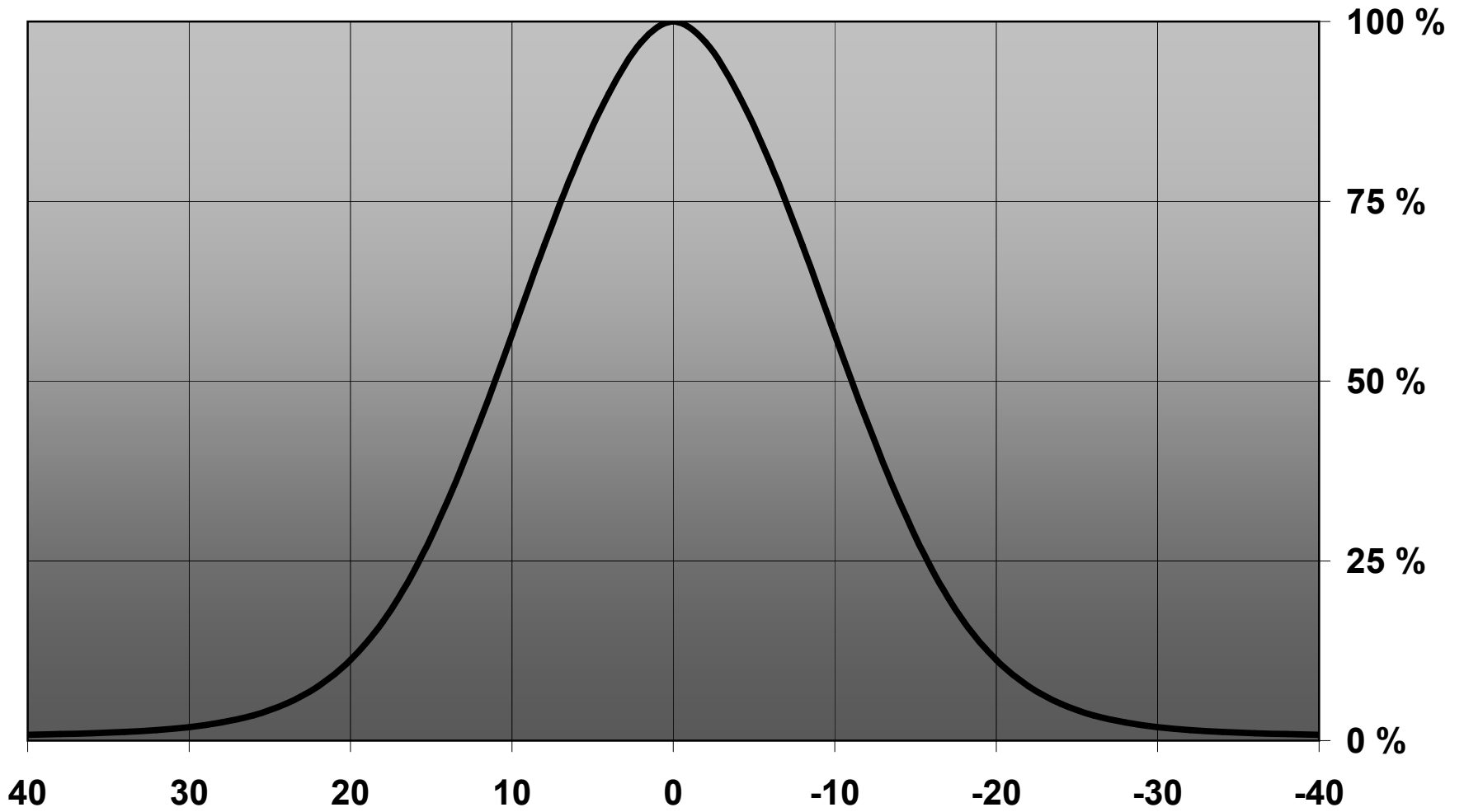
NOTE 1: We advise customer to ensure the suitability and sufficiency of the bond in the end product. For example, mechanical stress, vibration and holes on the surface of the circuit board weaken the strength of the tape.

NOTE 2: Assembly to the surface must be made straight, so the tape bonds constant and balanced with fastening surface. Slanted assembly might cause unbalanced bond to the surface. All surfaces where tape is applied must be clean, dry and free from grease and dirt.

If cleaning of PCB surfaces is needed, please follow strictly the cleaning instructions of your LED manufacturer - this is important as cleaning shall under no circumstances damage LEDs or other electronics components on the PCB.

Further note that optical components shall not be cleaned with any chemicals - only micro fiber cloth may be used to remove fingerprints or other traces from handling.

Relative intensity of CA11931_LR2-ES-M

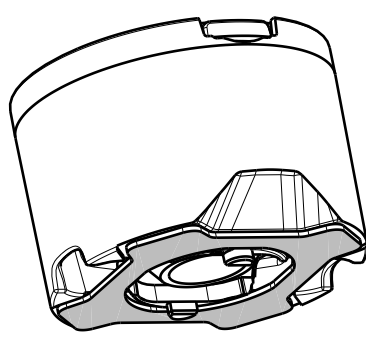


D

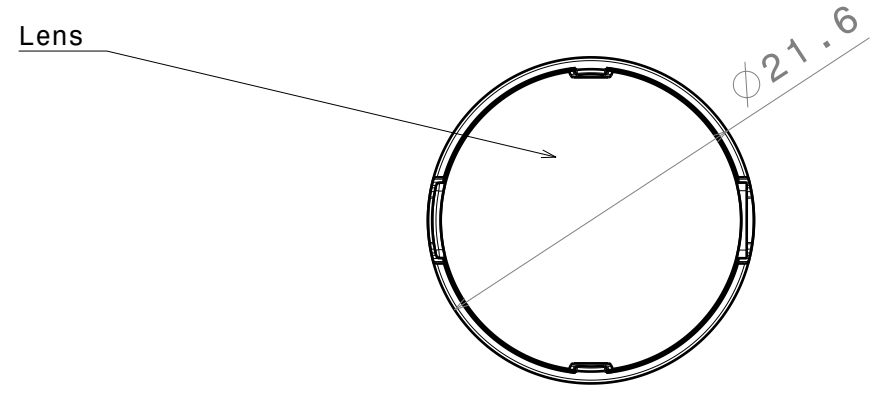
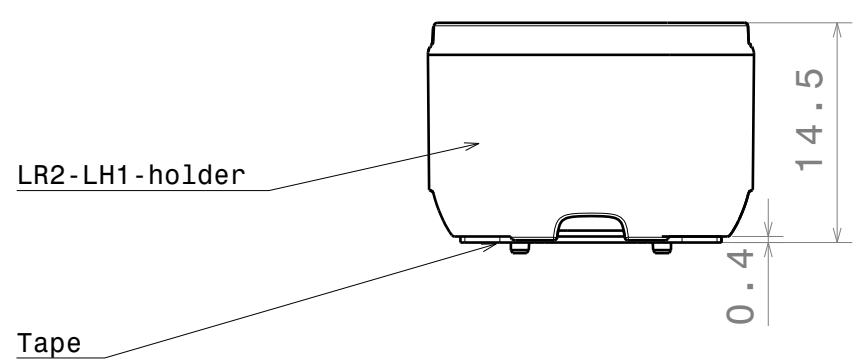
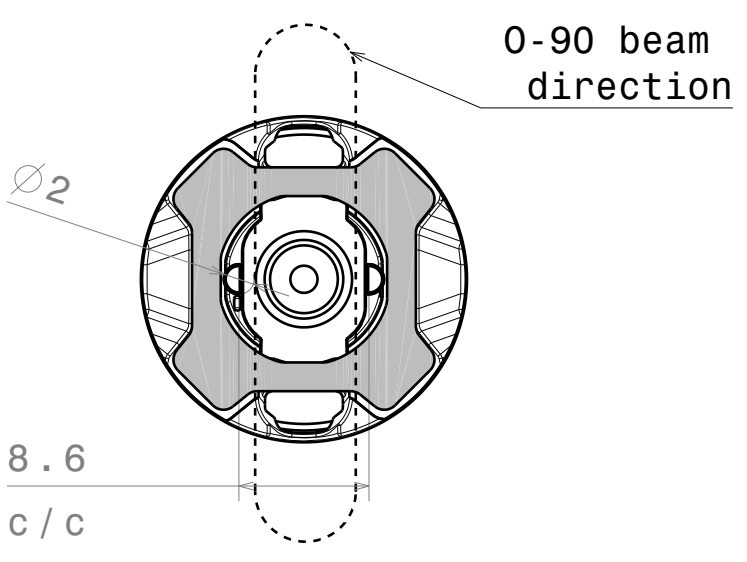
C

B

A



Isometric view



Materials:
 Lens: PMMA
 Holder: PC white
 Tape: PU FOAM

This drawing is our property.
 It can't be reproduced
 or communicated without
 our written agreement.



Ledil Oy
 Salorankatu 10
 FIN-24100 SALO
 Finland

DRAWING TITLE

DRAWN BY
ah

DATE
27.1.2012

Datasheet LR2-ES series

CHECKED BY
sn

DATE
27.1.2012

SIZE
A4

DRAWING NUMBER

REV
3

DESIGNED BY
pl

DATE
27.08.2010

SCALE 1:1

WEIGHT (g)

SHEET 1/1

D

A

4

4

3

3

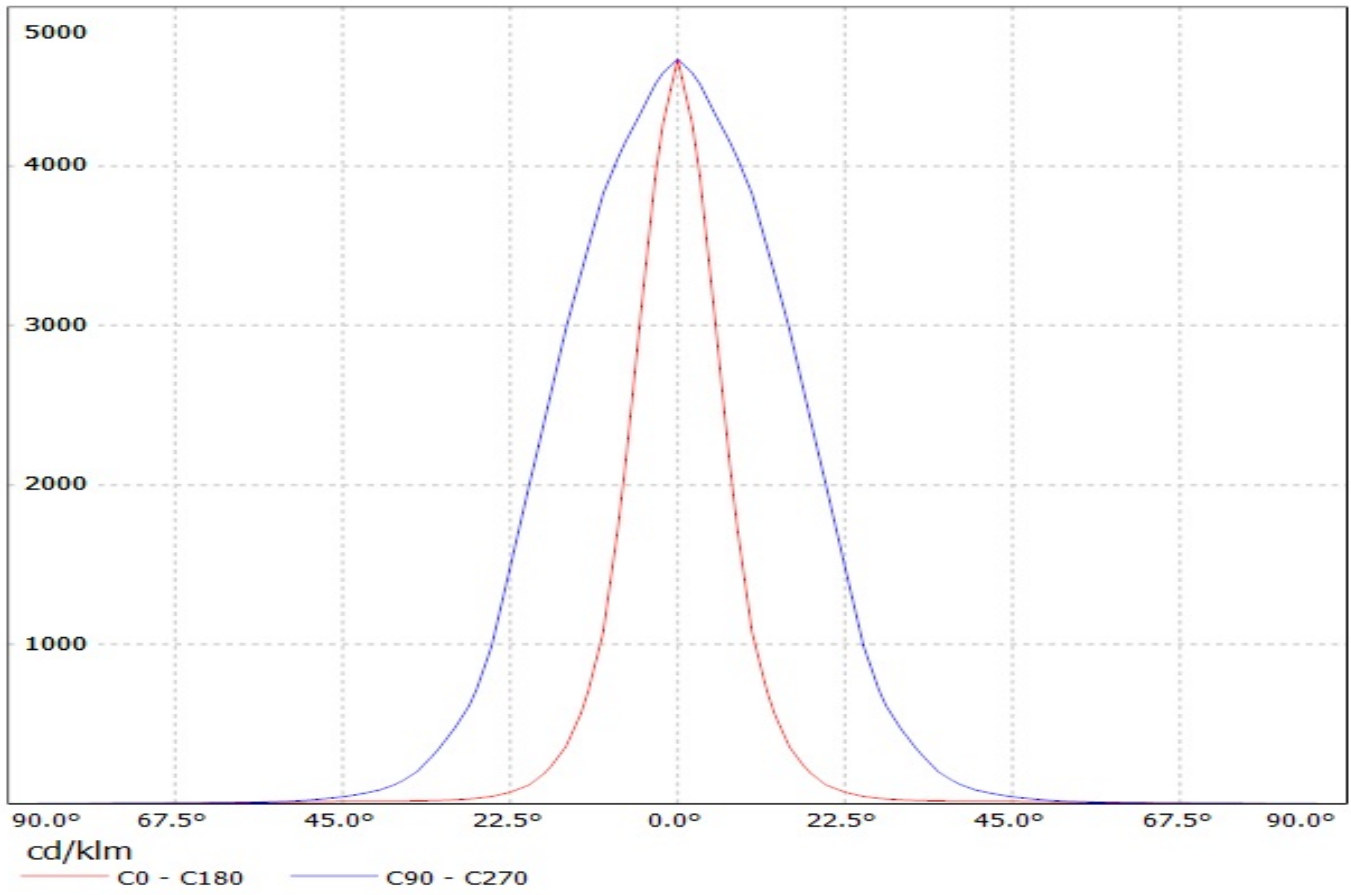
2

2

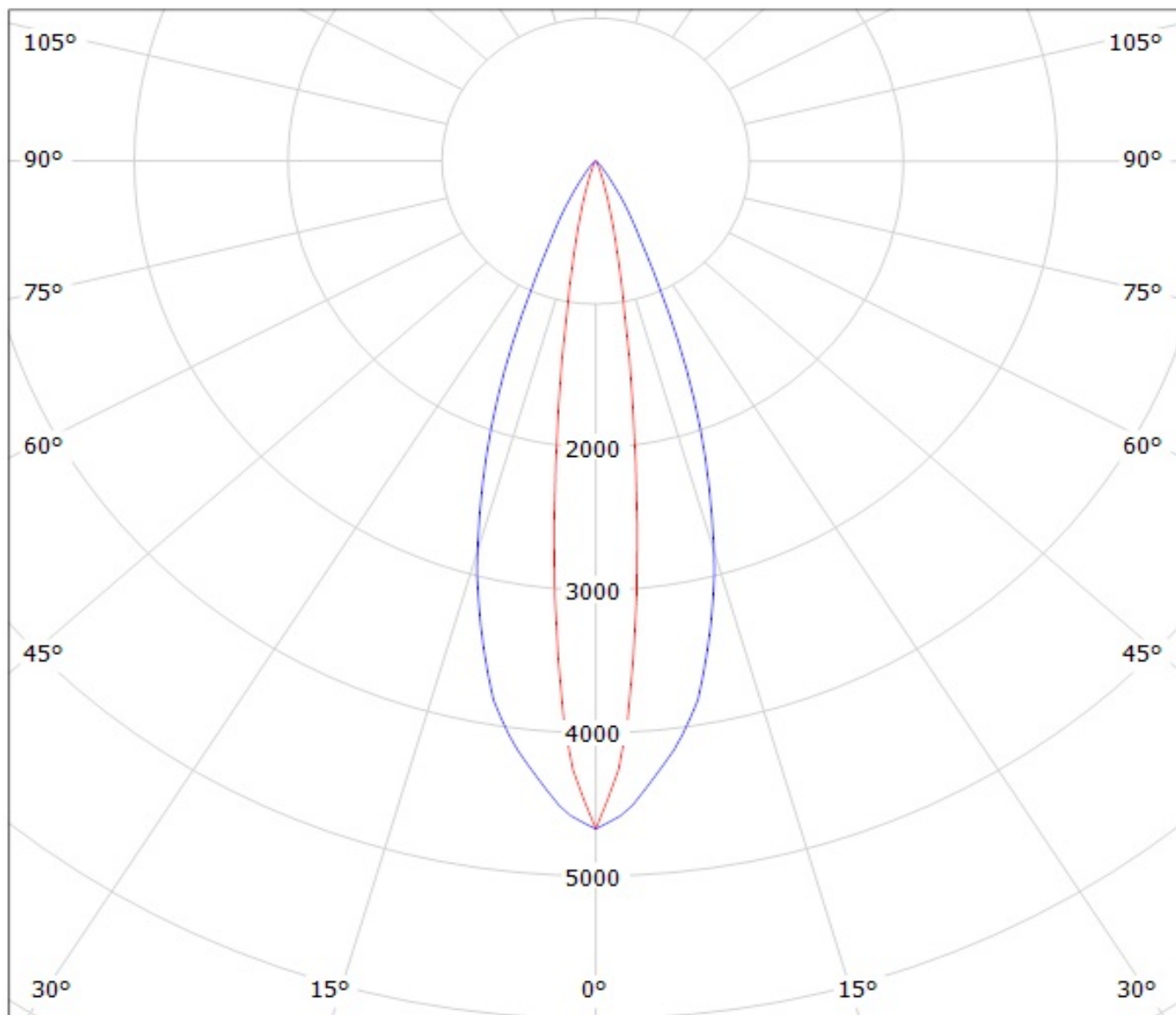
1

1

Luminaire: Ledil Oy CA12629_LR2-O-90 (Luxeon Rebel-ES 89lm @ 250mA) Efficiency=92%
Lamps: 1 x Luxeon Rebel-ES 89lm @ 250mA



Luminaire: Ledil Oy CA12629_LR2-O-90 (Luxeon Rebel-ES 89lm @ 250mA) Efficiency=92%
Lamps: 1 x Luxeon Rebel-ES 89lm @ 250mA



cd/klm

— C0 - C180

— C90 - C270