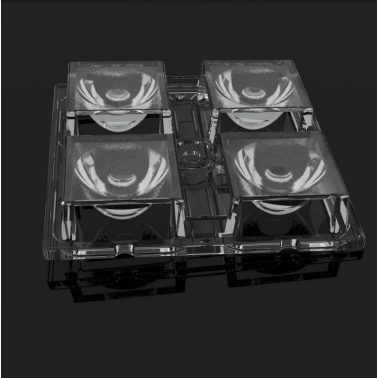



Ordering number C13233_HB-2X2-M

Family	High Bay	FWHM	25 degrees
Type	Lens array	Efficiency	92 %
LED	XT-E	cd/lm	3.700
Color	Clear	Gerber File	Available
Diameter	50x50 mm		
Height	8.5 mm		
Style	Square		
Optic Material	PMMA		
Holder Material	-		
Fastening	Screw, pin, glue		
Status	Ready		


Ordering number C13239_HB-2X2-M-BLIND

Family	High Bay	FWHM	25 degrees
Type	Lens array	Efficiency	92 %
LED	XT-E	cd/lm	3.700
Color	Clear	Gerber File	Available
Diameter	50x50 mm		
Height	8.5 mm		
Style	Square		
Optic Material	PMMA		
Holder Material	-		
Fastening	Pin, glue		
Status	Ready		


Ordering number C12345_HB-5X1-W

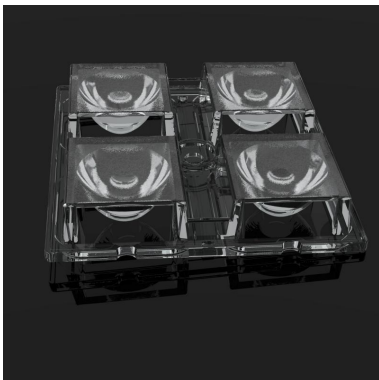
Family	High Bay	FWHM	50 degrees
Type	Lens array	Efficiency	(simulated) 0 %
LED	XT-E	cd/lm	-
Color	Clear	Gerber File	Available
Diameter	123 + 25 mm		
Height	9 mm		
Style	Rectang		
Optic Material	PMMA		
Holder Material	-		
Fastening	Screw, pin, glue		
Status	Ready		


Ordering number C12361_HB-2X2-W

Family	High Bay	FWHM	50 degrees
Type	Lens array	Efficiency	87 %
LED	XT-E	cd/lm	0.970
Color	Clear	Gerber File	Available
Diameter	50x50 mm		
Height	8.5 mm		
Style	Square		
Optic Material	PMMA		
Holder Material	-		
Fastening	Screw, pin, glue		
Status	Ready		


Ordering number C13232_HB-2X2-WW

Family	High Bay	FWHM	65 degrees
Type	Lens array	Efficiency	91 %
LED	XT-E	cd/lm	0.900
Color	Clear	Gerber File	Available
Diameter	50x50 mm		
Height	8.5 mm		
Style	Square		
Optic Material	PMMA		
Holder Material	-		
Fastening	Screw, pin, glue		
Status	Ready		


Ordering number C13237_HB-2X2-WW-BLIND

Family	High Bay	FWHM	65 degrees
Type	Lens array	Efficiency	91 %
LED	XT-E	cd/lm	0.900
Color	Clear	Gerber File	Available
Diameter	50x50 mm		
Height	8.5 mm		
Style	Square		
Optic Material	PMMA		
Holder Material	-		
Fastening	Pin, glue		
Status	Ready		

NOTE: The typical divergence will be changed by different color, chip size and chip position tolerance. The typical total divergence is the full angle measured where the luminous intensity is half of the peak value.



PRODUCT DATASHEET High Bay series

last update 17/4/2013

GENERAL INFORMATION

- Product series especially designed & optimized for XT-E series of LEDs.
- Special care taken to make light distribution as uniform as possible.
- Lens material optical grade PMMA with high UV and temperature resistance. Allows use of high current and temperature conditions.

Please find more information about used material from below:

http://ledil.fi/sites/default/files/Documents/Technical/Material/PMMA%20N%20UL94_Yellow%20Card.pdf

<http://ledil.fi/sites/default/files/Documents/Technical/Material/PMMA%20N%20PLEXIGLAS-Datasheet.pdf>

D

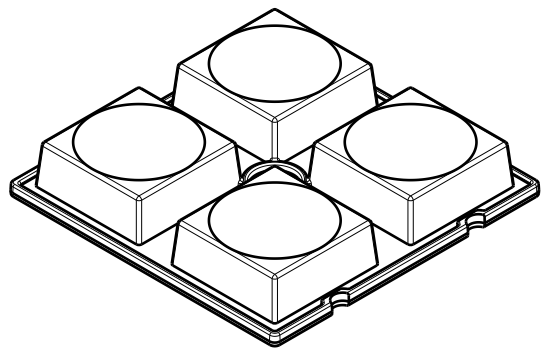
C

B

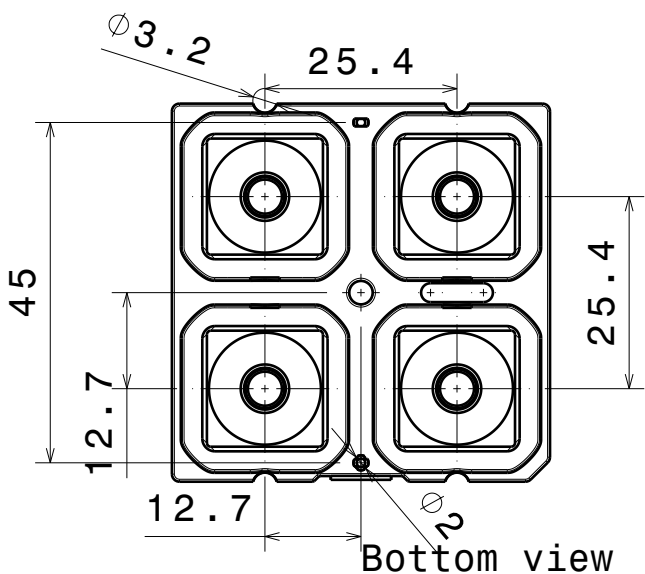
A

4

4



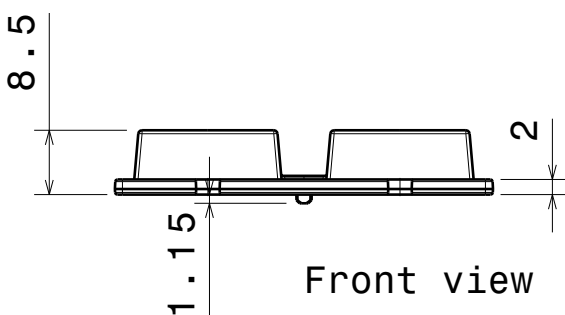
Isometric view



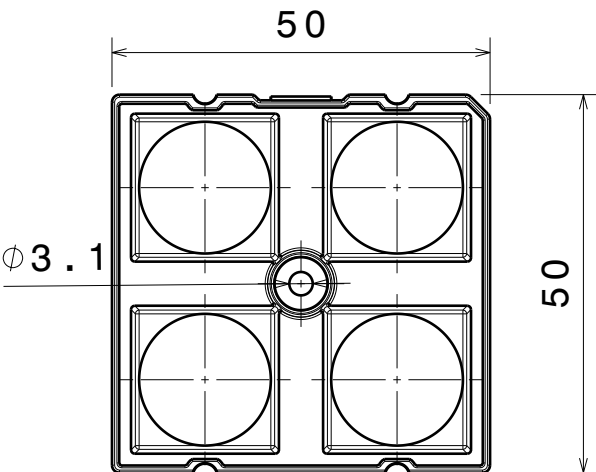
Bottom view

3

3



Front view



Top view

2

2

INDEX	PART NO	DESCRIPTION	MATERIAL	COLOUR
1	C13233	HB-2X2-M	PMMA	

Tolerances if not otherwise shown
 According to DIN ISO 2768-1
 Linear measures:
 Up to 30mm class F, otherwise class M.
 According to DIN ISO 2768-2
 Form and position: class K

LEDiL LediL Oy
 Salorankatu 10
 FIN 24240 SALO
 Finland

THIRD ANGLE PROJECTION:

DRAWING TITLE
HB-2X2-M

This drawing is the property of LEDiL Oy. It may not be reproduced, copied or communicated without a written agreement with LEDiL Oy."

SIZE
A4 **C13233**

SCALE 1:1 WEIGHT SHEET 1/1

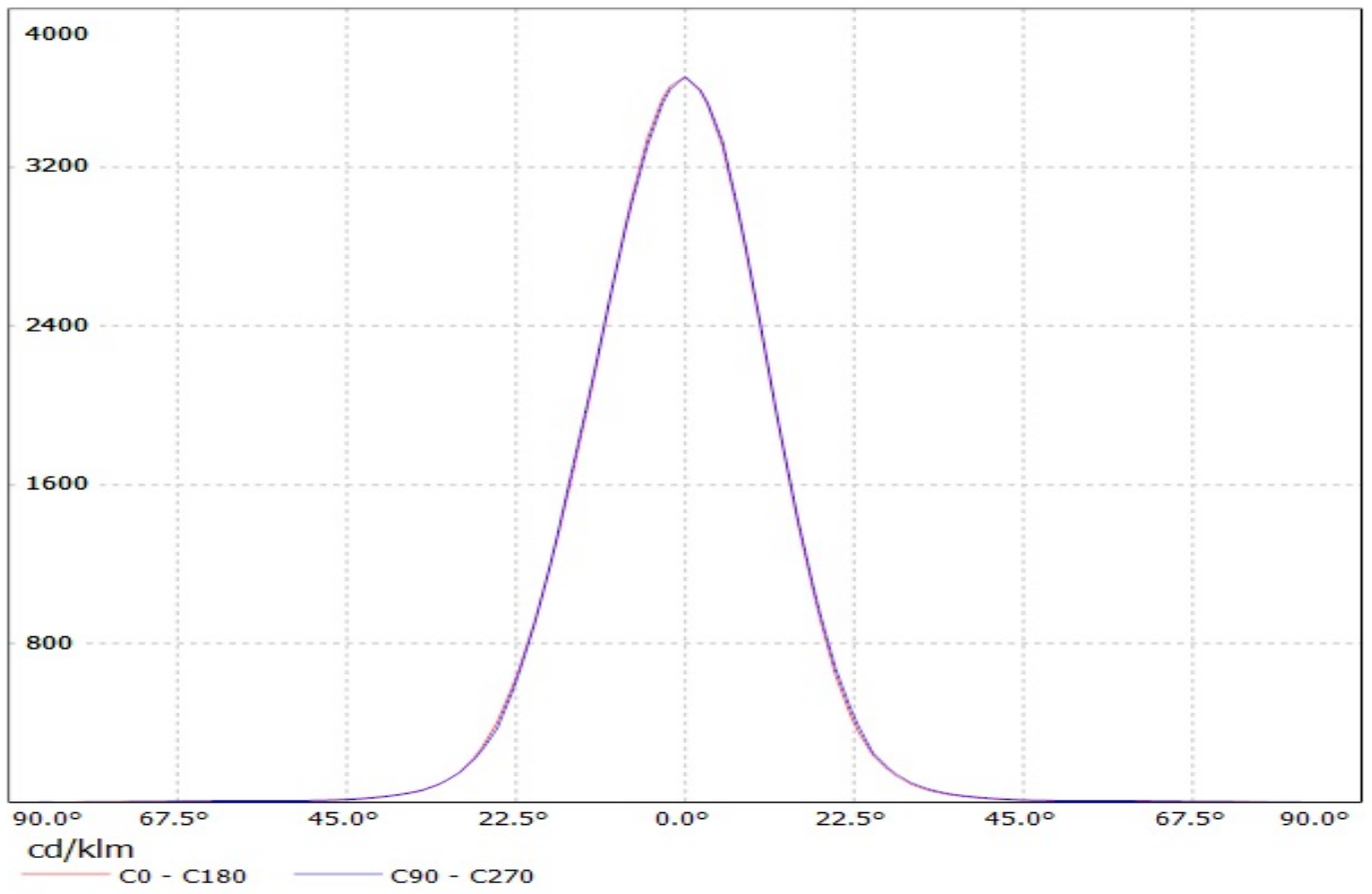
D

A

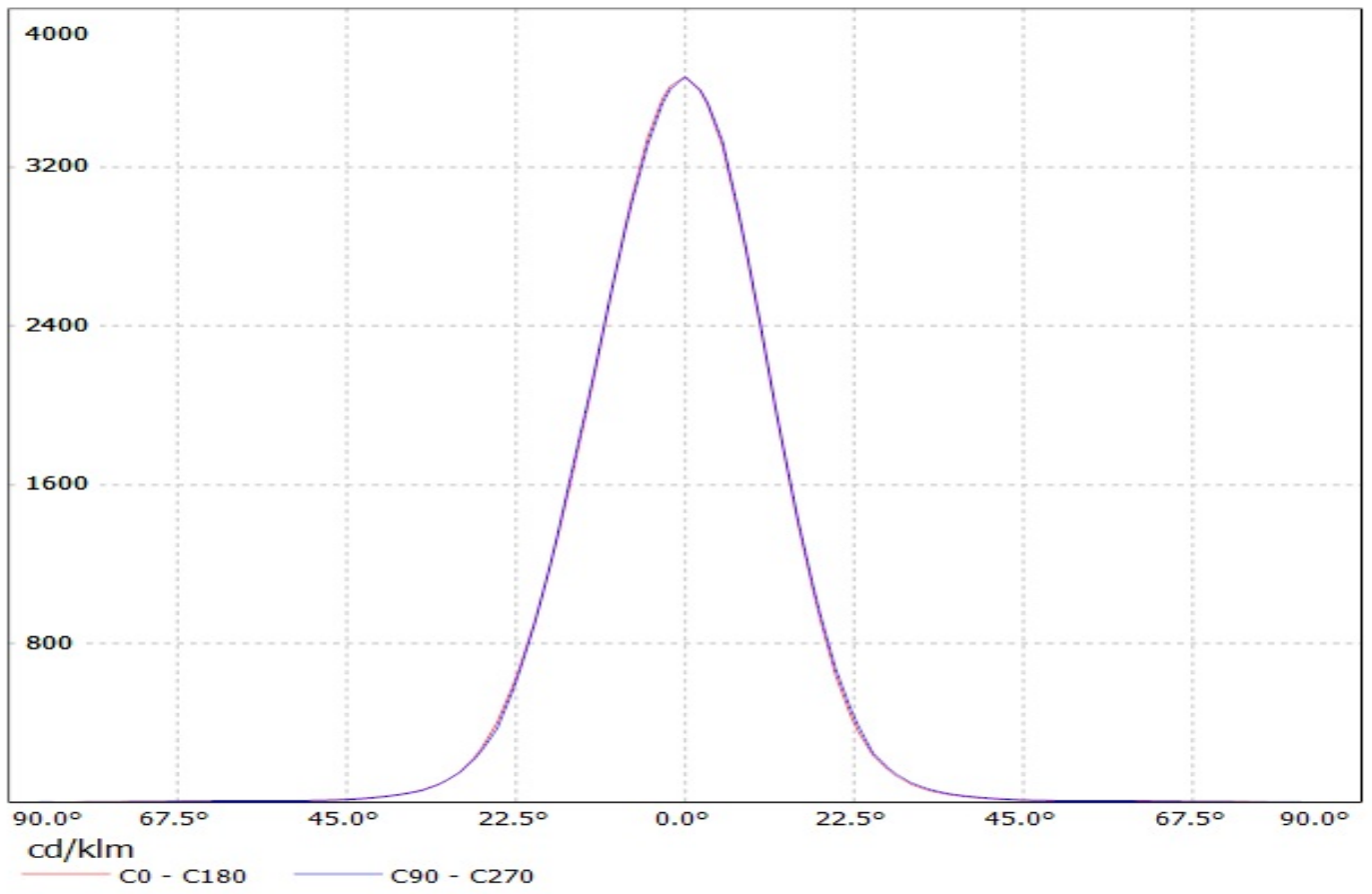
1

1

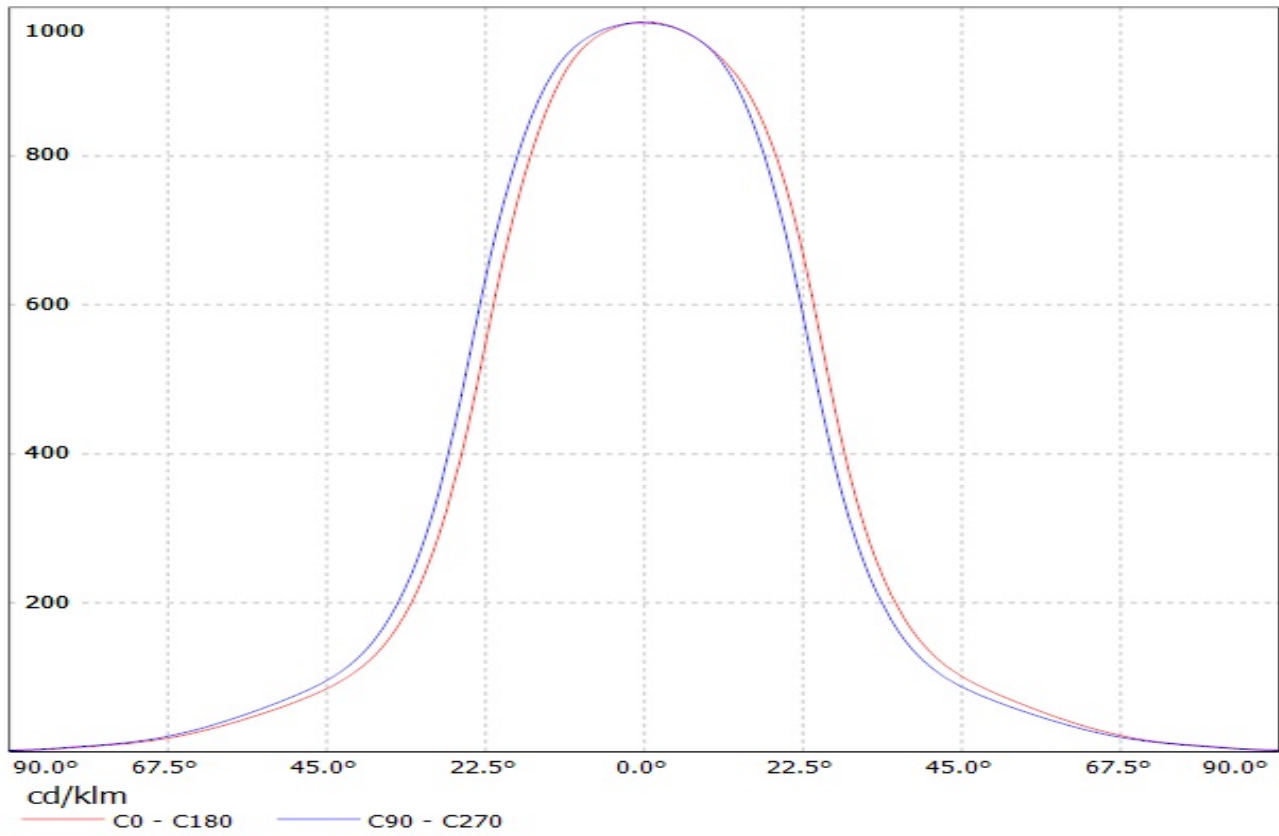
Luminaire: Ledil Oy C13233_HB-2x2-M (Cree XT-E 390lm @ 250mA) Efficiency=92%
Lamps: 1 x Cree XT-E 390lm @ 250mA



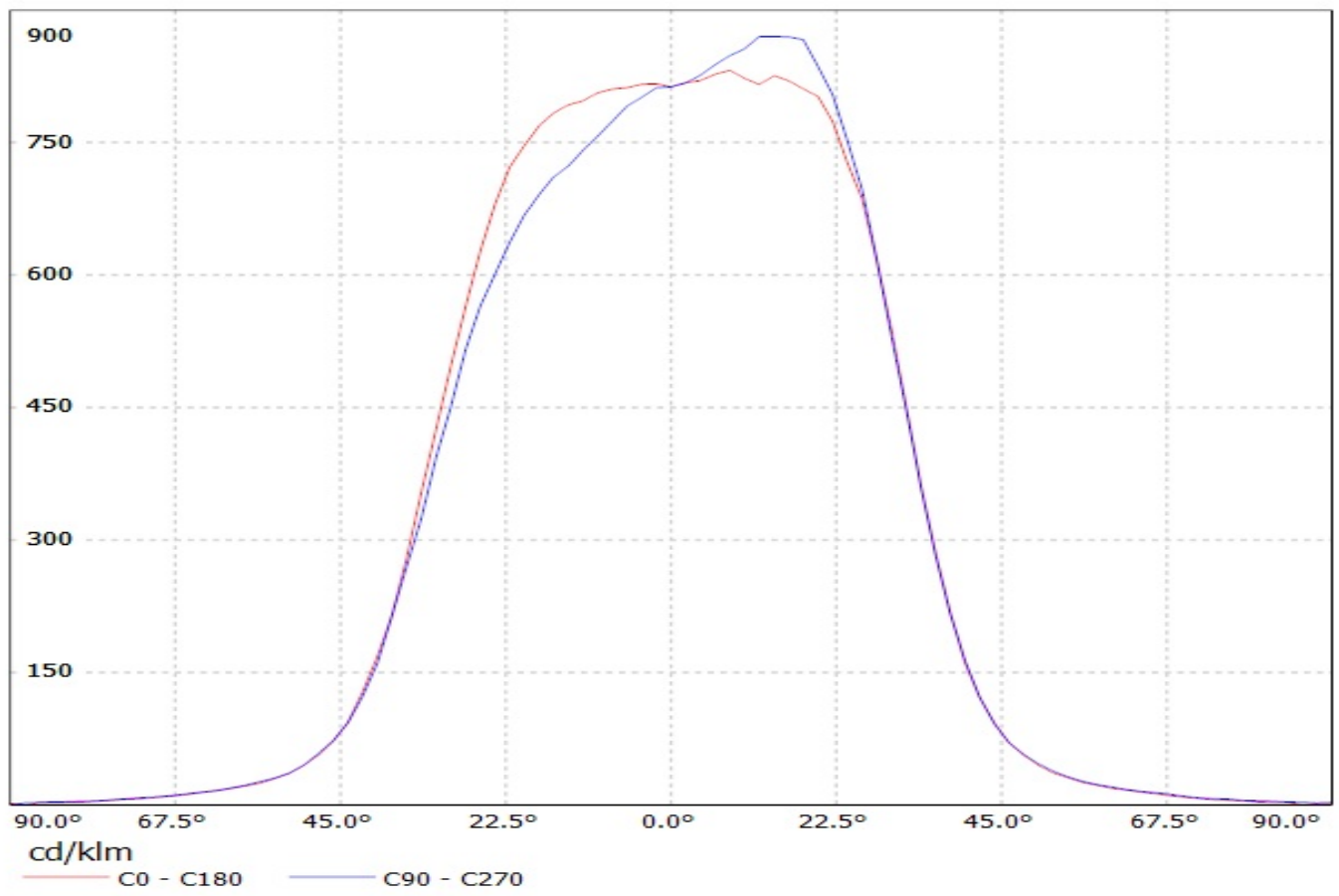
Luminaire: Ledil Oy C13233_HB-2x2-M (Cree XT-E 390lm @ 250mA) Efficiency=92%
Lamps: 1 x Cree XT-E 390lm @ 250mA



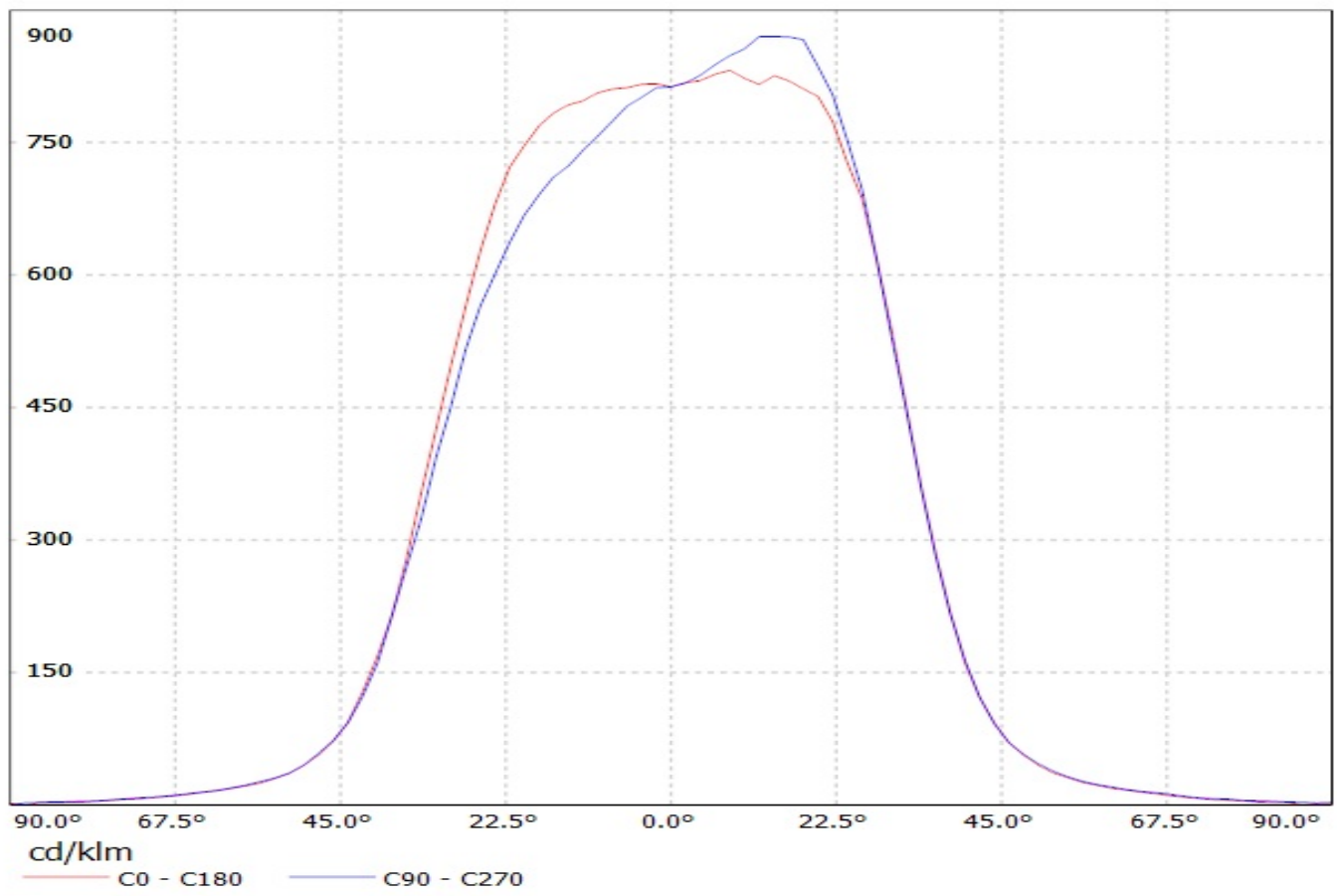
Luminaire: LEDIL OY C12361_HB-2X2 (XT-E AWT) Efficiency=89%
Lamps: 1 x Cree XT-E AWT (390lm@250mA)



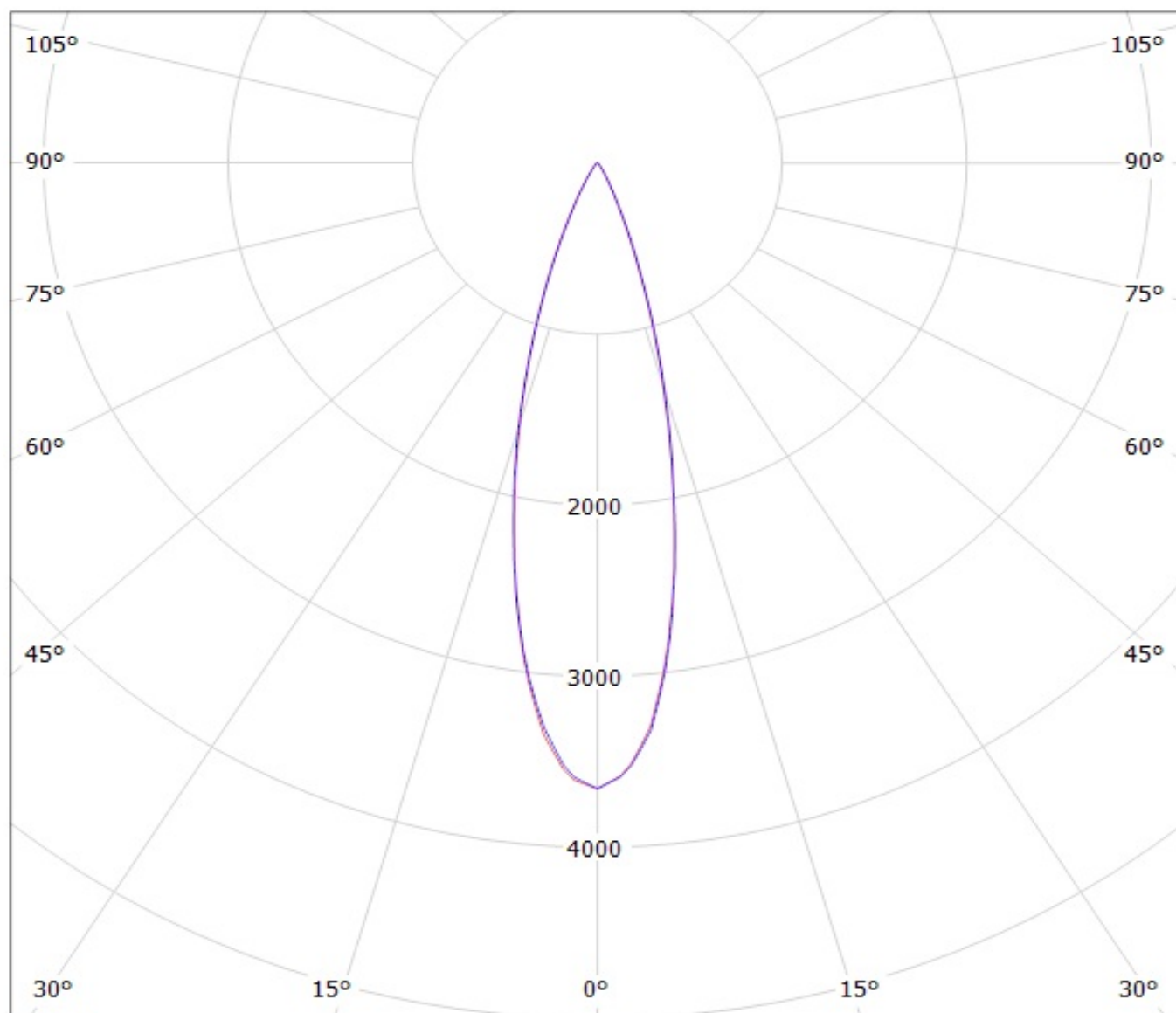
Luminaire: Ledil Oy C13237&C13232_HB-2X2-WW (Cree XT-E 390lm @ 250mA) Efficiency=91%
Lamps: 1 x Cree XT-E 390lm @ 250mA



Luminaire: Ledil Oy C13237&C13232_HB-2X2-WW (Cree XT-E 390lm @ 250mA) Efficiency=91%
Lamps: 1 x Cree XT-E 390lm @ 250mA



Luminaire: Ledil Oy C13233_HB-2x2-M (Cree XT-E 390lm @ 250mA) Efficiency=92%
Lamps: 1 x Cree XT-E 390lm @ 250mA

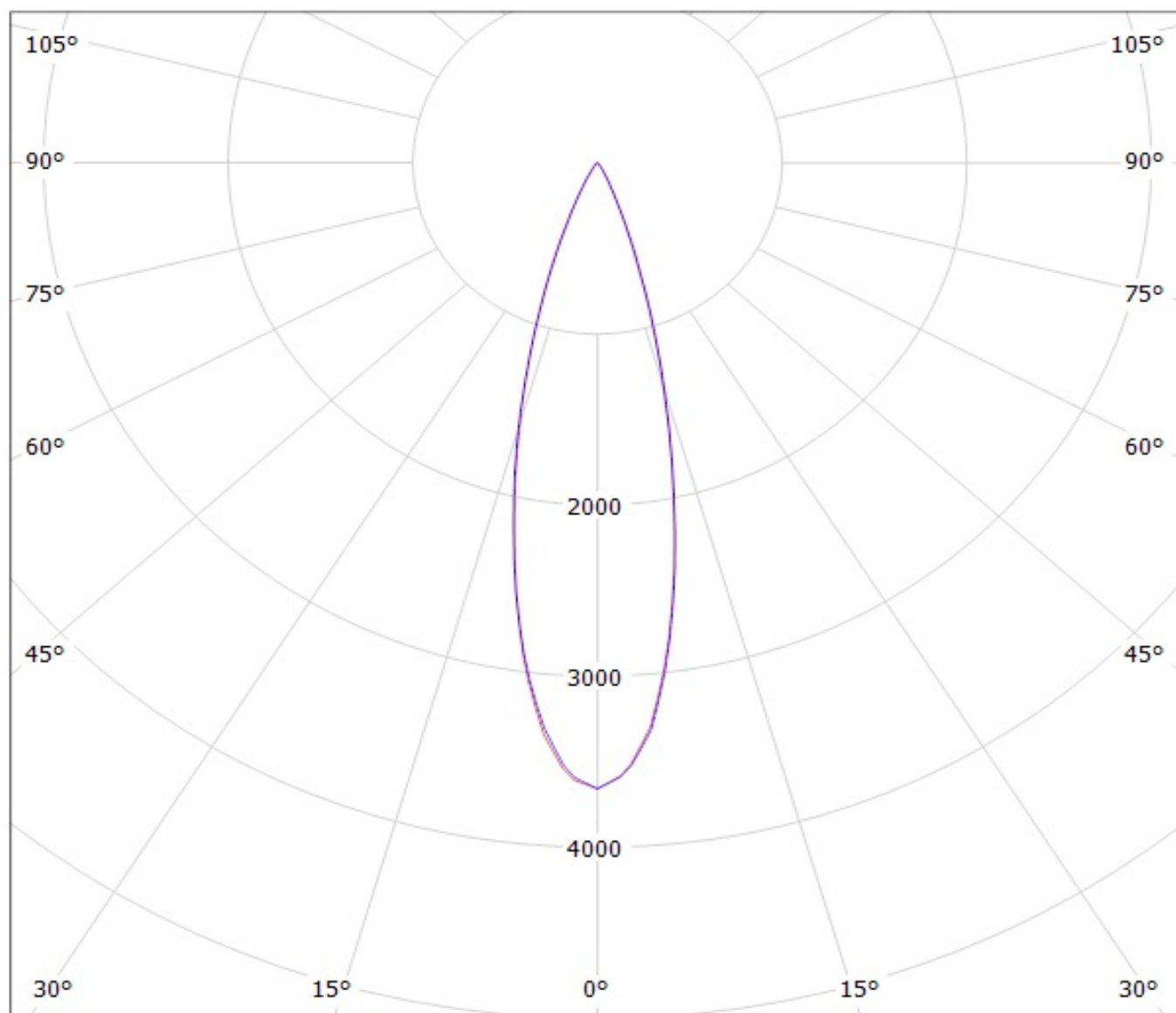


cd/klm

— C0 - C180

— C90 - C270

Luminaire: Ledil Oy C13233_HB-2x2-M (Cree XT-E 390lm @ 250mA) Efficiency=92%
Lamps: 1 x Cree XT-E 390lm @ 250mA

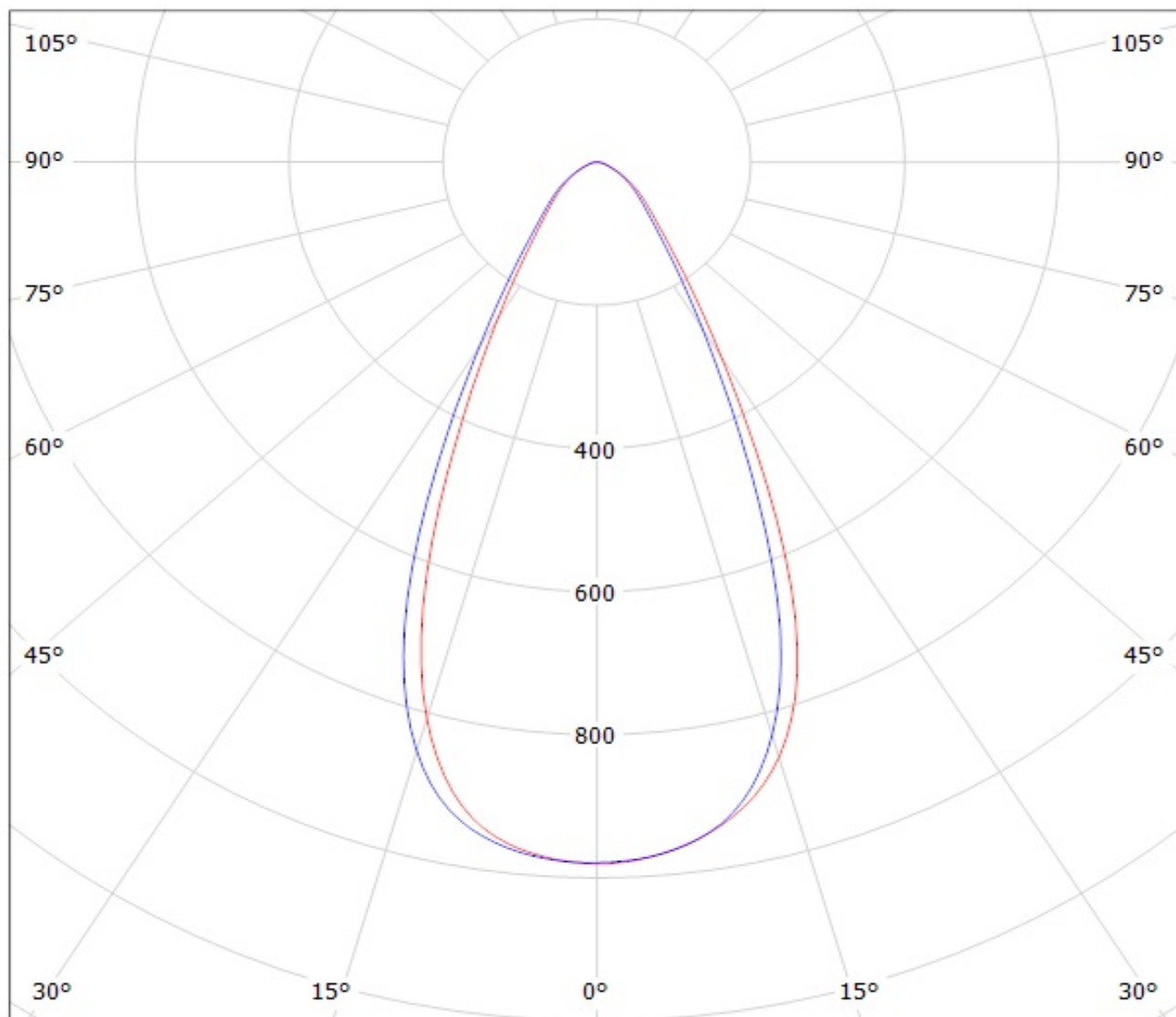


cd/klm

— C0 - C180

— C90 - C270

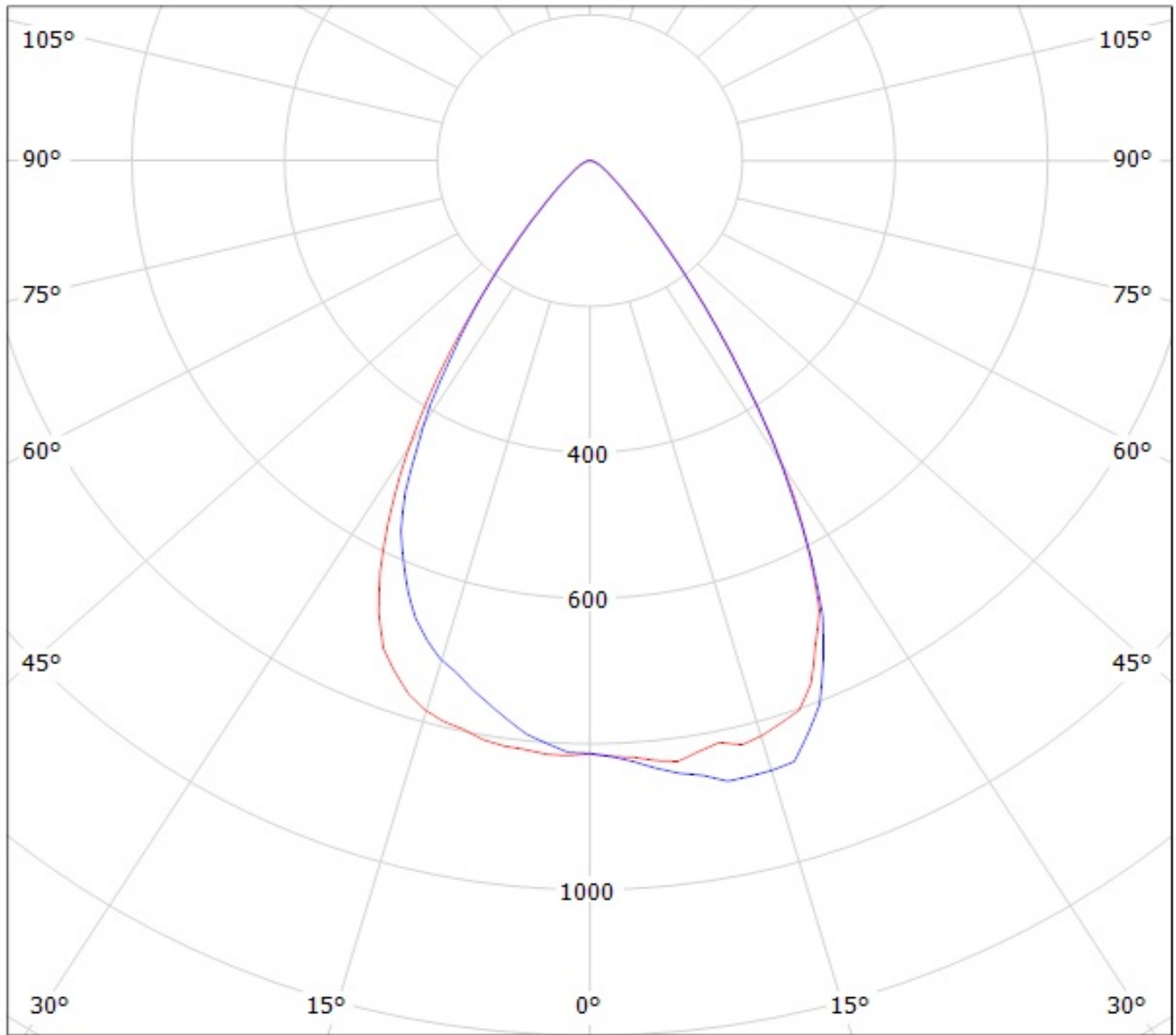
Luminaire: LEDIL OY C12361_HB-2X2 (XT-E AWT) Efficiency=89%
Lamps: 1 x Cree XT-E AWT (390lm@250mA)



cd/klm

— C0 - C180 — C90 - C270

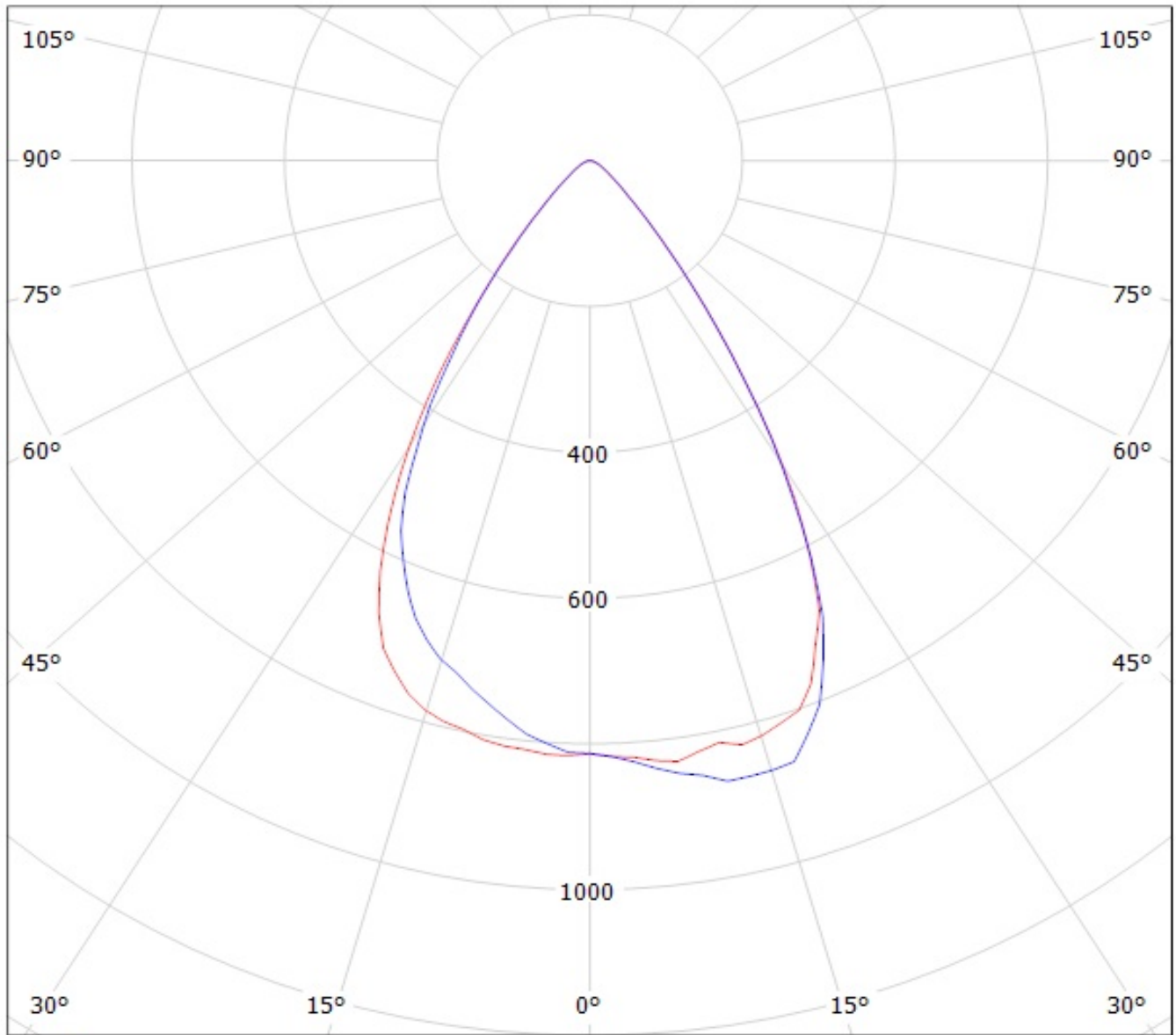
Luminaire: Ledil Oy C13237&C13232_HB-2X2-WW (Cree XT-E 390lm @ 250mA) Efficiency=91%
Lamps: 1 x Cree XT-E 390lm @ 250mA



cd/klm

— C0 - C180 — C90 - C270

Luminaire: Ledil Oy C13237&C13232_HB-2X2-WW (Cree XT-E 390lm @ 250mA) Efficiency=91%
Lamps: 1 x Cree XT-E 390lm @ 250mA



cd/klm

— C0 - C180

— C90 - C270